

# ACTIVATE YOUR JUNIPER NETWORKS JUNOS SPACE PRODUCT

This document briefly describes how to use your Juniper Networks authorization code to activate your Juniper Networks® Junos® Space product

## Four Easy Steps to Activate Your Juniper Networks License Key

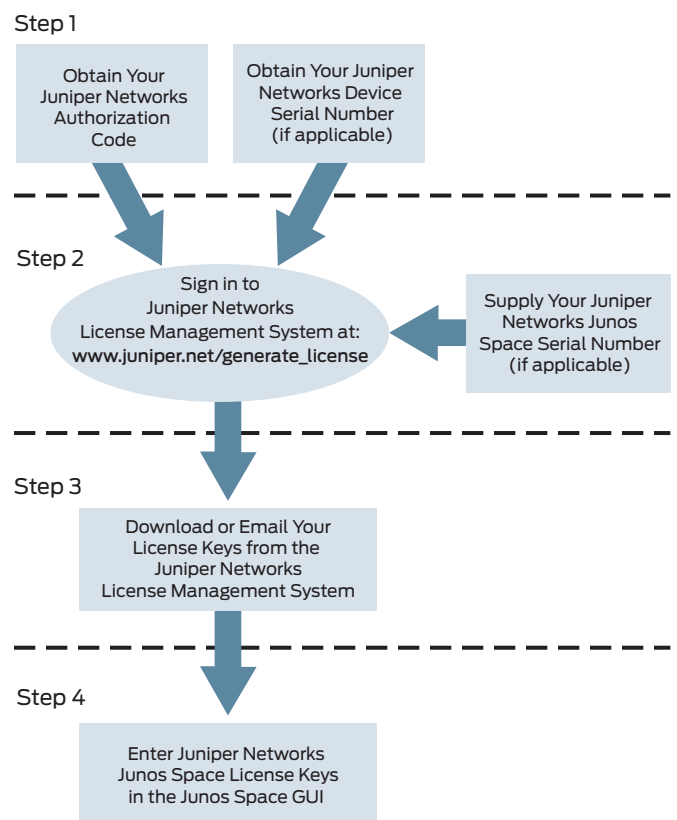
1. Gather the authorization code for your Juniper Networks Junos Space feature. If you will be adding a new Junos Space device to your network, gather its serial number as well (device serial number is only needed when adding Junos Space device hardware).

**Authorization Code:** The 16-digit alphanumeric authorization code is sent via email in response to your order and is required to activate your Juniper Networks product. The authorization code is required to generate your license key—it is not the actual license key.

**Device Serial Number:** The device serial number is a unique alphanumeric code used to identify your Junos Space device when generating license keys. You can find the device serial number at the bottom or side of the unit. You can also find the serial number through the Junos Space GUI. Select Administration -> Manage Fabric to see the nodes within the Space fabric. Select the node you need to register and view Details to display the serial number of the device.

2. Sign in to the Juniper Networks License Management System (LMS) at [www.juniper.net/generate\\_license](http://www.juniper.net/generate_license). Select the Junos Space link from the drop-down menu and follow the instructions. If you are adding the feature to an existing fabric, you will be asked for one of your current fabric serial number(s).
3. The LMS will provide you with your Junos Space license key(s) in one of two ways:
  - Download your license key to your computer from the License Management System.
  - Receive an email from LMS containing your license key.
4. Sign in to the Junos Space GUI and enter your license key on the Administration -> Manage Licenses -> Upload License screen. Paste your license into the form and click Upload.

### Activating Your Junos Space Product



For more detailed information regarding license key types, generating a new license key, and upgrading existing license keys, please refer to the [Juniper Networks Junos Space Administration Guide](#) for your Junos Space Product.

For additional assistance, you may contact Juniper Networks Customer Care at +1-888-314-5822 (United States) or +1-408-936-1572 (outside the United States). Alternately, you may also open a case online via the Juniper Customer Support Center Case Manager.