

# Juniper Secure Analytics Quick Start Guide

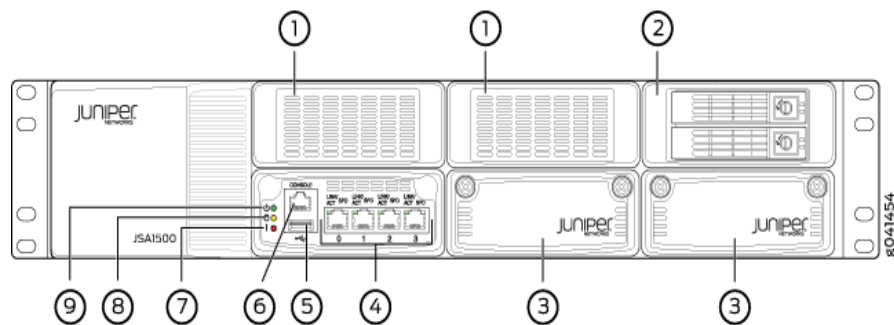
The instructions in this guide help you connect the Juniper Secure Analytics (JSA) appliance to your network. For details, see the *JSA Hardware Guide* at [http://www.juniper.net/techpubs/en\\_US/release-independent/jsa/information-products/pathway-pages/jsa-series/product/](http://www.juniper.net/techpubs/en_US/release-independent/jsa/information-products/pathway-pages/jsa-series/product/).

## JSA Models

The following JSA appliances are available:

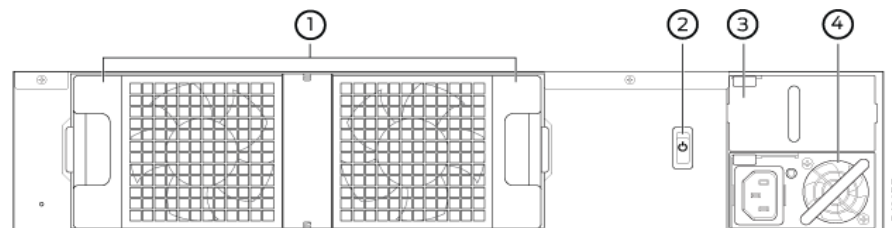
Appliance	Memory	Storage Configuration
JSA1500-BSE	24 GB	Two 1-TB HDDs, RAID1 mirror
JSA3500-BSE	32 GB	Six 1-TB HDDs, RAID10
JSA5500-BSE	96 GB	Eight 1-TB HDDs, RAID10
JSA7500-BSE	128 GB	28 drives of 900 GB HDDs, RAID10

## JSA1500 Front Panel



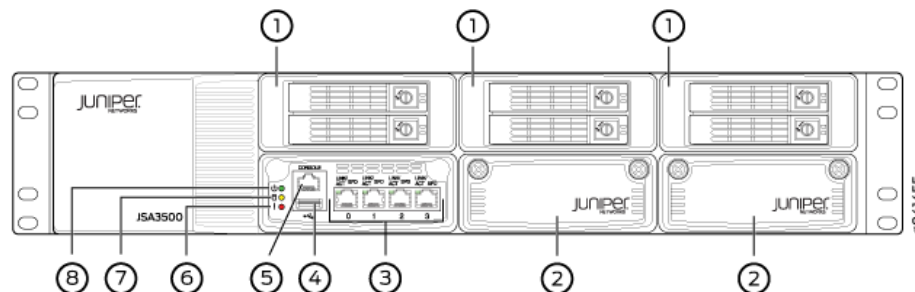
Callout	Description	Callout	Description
1	Empty	6	Console port
2	Hard drive	7	Fault LED
3	IOC expansion slots	8	Hardware disk activity LED
4	Network ports	9	Power LED
5	USB port		

## JSA1500 Back Panel



Callout	Description	Callout	Description
1	Cooling fan	3	Redundant power supply slot
2	Power switch	4	Power supply

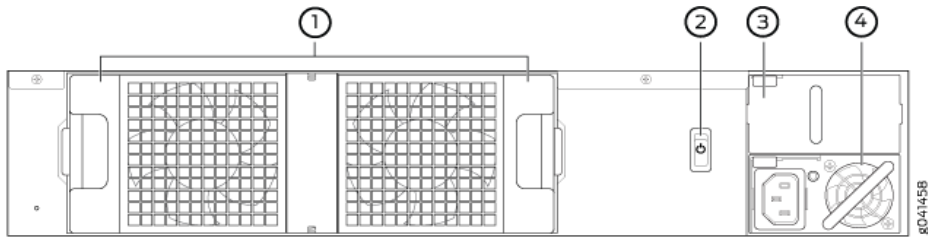
## JSA3500 Front Panel



Callout	Description	Callout	Description
1	Hard drive	5	Console port
2	IOC expansion slots	6	Fault LED
3	Network ports	7	Hardware disk activity LED
4	USB port	8	Power LED

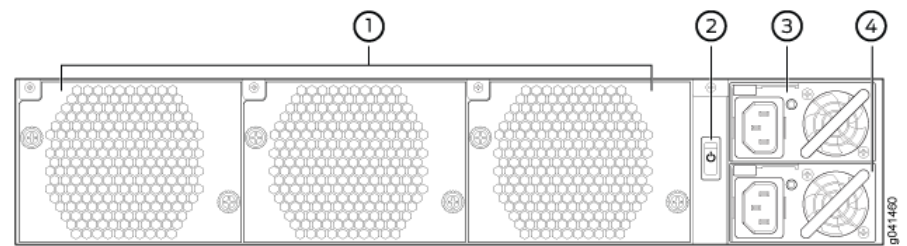


## JSA3500 Back Panel



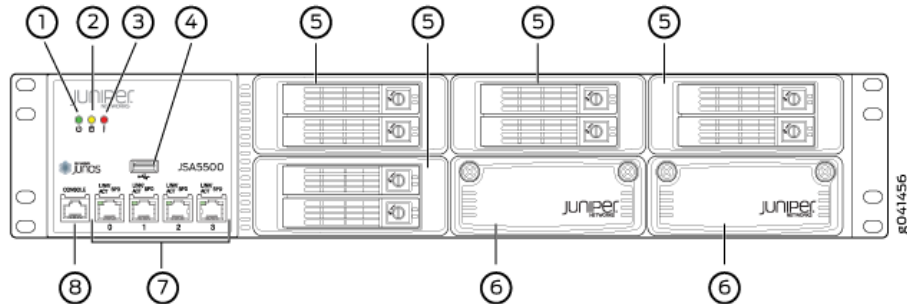
Callout	Description	Callout	Description
1	Cooling fans	3	Redundant power supply slot
2	Power switch	4	Power supply

## JSA5500 Back Panel



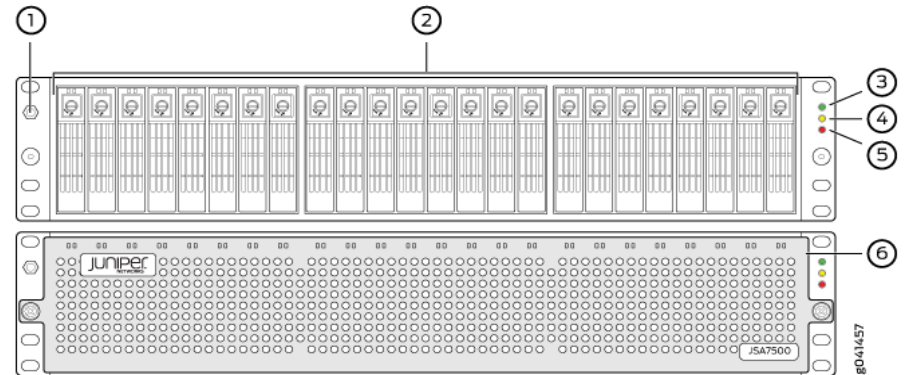
Callout	Description	Callout	Description
1	Cooling fans	3	Redundant power supply
2	Power switch	4	Redundant power supply

## JSA5500 Front Panel



Callout	Description	Callout	Description
1	Power LED	5	Hard drive
2	Hardware disk activity LED	6	IOC expansion slots
3	Fault LED	7	Network ports
4	USB port	8	Console port

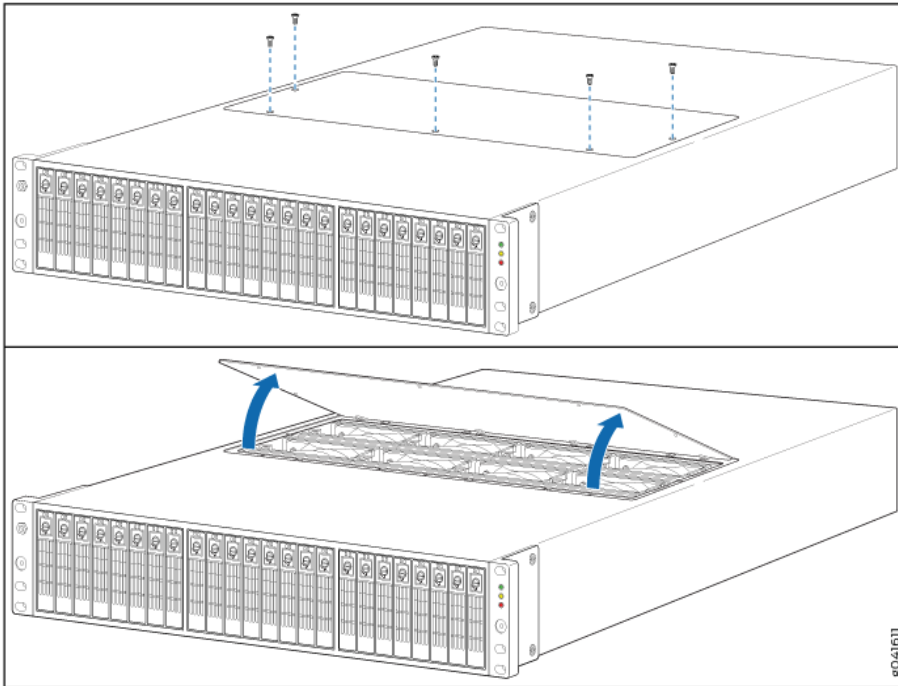
## JSA7500 Front Panel



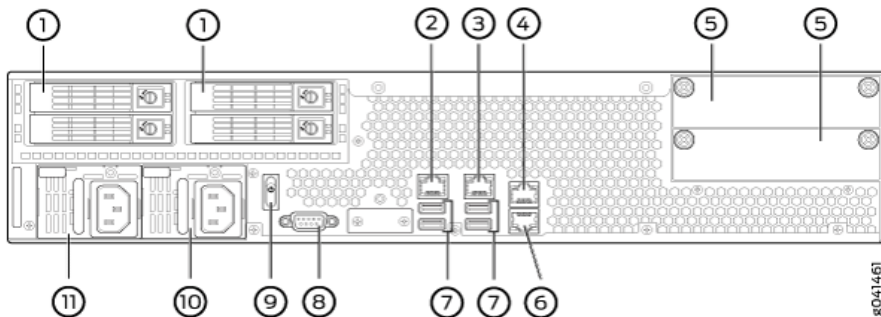
Callout	Description	Callout	Description
1	ESD wrist strap grounding jack	4	Hardware disk activity LED
2	Hard drives	5	Fault LED
3	Power LED	6	Front bezel with air filter

## JSA7500 with Fan

JSA7500 has internal hot-swappable cooling fans. See the following illustration for details on the fan location in JSA7500.



## JSA7500 Back Panel



Callout	Description	Callout	Description
1	Hard drive	7	USB ports
2	Network port 0	8	DB-9 Serial Console port
3	Network port 1	9	Power switch
4	Network port 2	10	Redundant power supply
5	IOC expansion slots	11	Redundant Power supply
6	Network port 3		

## Before You Begin

Before you can install and configure your JSA appliance, you must have access to the following:

- Java Requirements - You must install Java™ Runtime Environment (JRE). You can download the required Java version at the following website: <http://java.sun.com/>. Ensure that you install JRE on your desktop system, not on the JSA system.

- Browser Requirements - You must have Internet Explorer 8.0 or 9.0 or Firefox 10.0.

**Warning:** Before performing the installation and configuration procedures in this document, see the safety instructions and important regulatory information in the *JSA Installation Guide* and the *JSA Hardware Installation Guide*.

## Installing and Configuring JSA

### Task 1: Unpack Your Appliance

Unpack the shipping carton. Verify the contents against the included parts inventory. Save the shipping materials in case you need to move or ship the device later.

**NOTE:** Do not unpack the device until you are ready to begin installation.

### Task 2: Install the Appliance in a Rack

- Remove the rear screws on each side of the system's front rails and the two small screws toward the front of the chassis.
- Loosen the side-rail screws of the chassis and slide the front rail of the system backward, as far as it will move.
- Tighten the side-rail screws. Insert the two small screws in the recessed holes on the front rails and tighten.
- Repeat step 1 to step 3 for the other side of the chassis.
- Slide the rear-mount rail brackets into the backs of the front rails on either side of the chassis and align with your rear equipment rack posts. Secure the rear-mount rail brackets to your equipment rack with two rack mount screws each.

6. Insert locking screws on the sides of the rear-mount brackets to secure the front and rear mounting brackets in place.
7. Verify that the mounting screws on one side of the rack are aligned with the mounting screws on the opposite side and that the appliance is level.

For different rack-installation methods, see the *JSA Hardware Installation Guide*.

### Task 3: Connect to External Devices

Connect external devices using the ports on the front panel of the appliance. If you use a laptop, connect the laptop to the RJ-45 console port on the front panel of the appliance. For JSA7500, connect the laptop to the DB-9 serial console port on the back panel.

### Task 4: Connect to the Network

1. Plug an Ethernet cable into the port labeled **0** on the front panel. For JSA7500, the network port is on the back panel.
2. Plug the straight-through cable into the console port.

The management interface with port labeled **0** is the communications port for your appliance. The other monitoring interfaces allow you to connect to SPAN or TAP ports.

### Task 5: Connect to Power Source and Power On the Appliance

1. Insert the appliance coupler end of the power cord into the AC receptacle on the rear panel of the appliance.
2. If your JSA contains two power supplies:
  - a. Plug a power cord into each of the AC receptacles.
  - b. Plug the other end of the power cord into an uninterruptible power supply (UPS) or a power distribution unit (PDU).

### Task 6: Configure a JSA Appliance

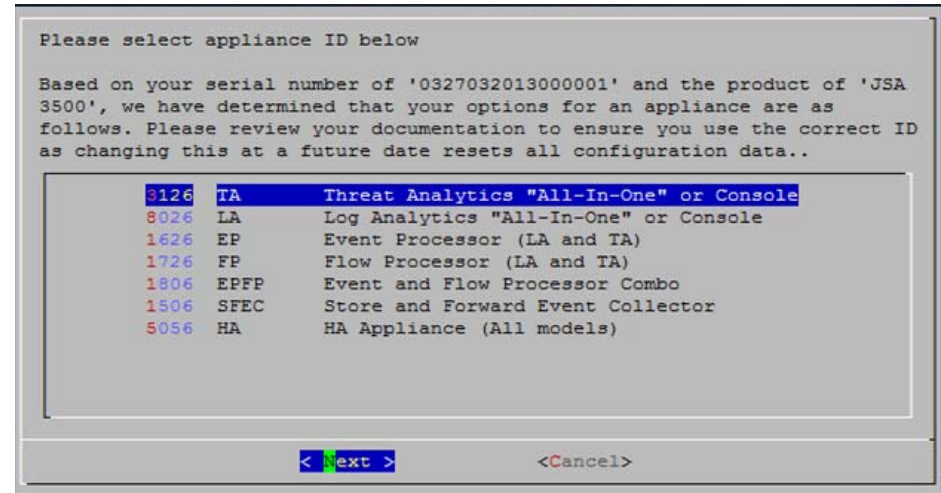
**NOTE:** When using a laptop to connect to the appliance, you must use a terminal program, such as HyperTerminal, to connect to the appliance. Be sure to set **Connect Using** to the appropriate COM port of the serial connector and **Bits per second** to 9600. You must also set **Stop Bits** (1), **Data bits** (8), and **Parity** (None).

1. Using a serial connection, log in as root (default username) and the password is not required:

```
Username: root
```

**NOTE:** The username is case sensitive.

2. Press **Enter**. The End User License Agreement (EULA) appears.
3. Read the information in the window. Press the Spacebar to advance each window until you have reached the end of the document. Type **YES** to accept the agreement, then press **Enter**. The Appliance ID selection window appears.



4. Select the appliance ID and then press **Enter** to select **Next**.  
For more information on the appliance ID, see the KB article KB14832 at <https://kb.juniper.net/KB14832>.
5. Select **normal** from the following types of setup:
  - normal—Default setup.
  - recovery—HA recovery setup.
6. Select **Next**. The Tuning Template window appears.
7. Select **Enterprise** to use to tune your appliance.
8. Select **Next**. The Date and Time window appears.
9. Select the method you want to use to set the date and time.
  - Manual—Allows you to manually input the date and time. Select **Next**.
  - Server—Allows you to specify your time server. Select **Next**.
10. Select your time zone continent or area, and then select **Next**.
11. Select your time zone region, and then select **Next**.
12. Select one of the following Internet protocol:
  - IPv6—Internet Protocol version 6.
  - IPv4—Internet Protocol version 4.
13. Select **Next**. The Management Interface window appears.
14. Select port **0** to specify as the management interface and the select **Next**.

15. Enter the values for the following parameters to configure the JSA Settings:
  - . Hostname—Type a fully qualified domain name as the system hostname.
  - . IP Address—IP address of the system.
  - . Network Mask—Network mask for the system.
  - . Gateway—Default gateway address.
  - . Primary DNS—Primary DNS server address.
  - . Secondary DNS—Optional. Secondary DNS server address.
  - . Public IP—Optional. Public IP address of the server.
  - . Email server—E-mail server name. If you do not have an e-mail server, specify the localhost in this field.
16. Select **Next**. The New Root Password window appears.
17. Enter your new password, and select **Next**. The Confirm New Root Password window appears.
18. Re-enter your new password to confirm, and select **Finish**. A series of messages appear as JSA continues with the installation. This is typically a three-to-five-minute process. When the JSA installation process is complete, the message window appears.

### **Task 7: Finish Installation**

1. Select **OK** to complete the installation.
2. Type **exit** and press **Enter**.

### **Task 8: Access JSA**

1. Open your Web browser.
2. Log in to JSA:

`https://<IP Address>`

Where <IP Address> is the IP address of the JSA system. The default values are:

Username: *admin*

Password: *<root password>*

*<root password>* is the new root password you set during the installation process.

3. Click **Login To** JSA.

The JSA interface appears. You are now ready to start tuning JSA and high availability (HA) settings. For more information, see the *JSA Administration Guide*.

### **Contacting Juniper Networks**

For technical support, see [www.juniper.net/support/requesting-support.html](http://www.juniper.net/support/requesting-support.html).

