

Day One+

SRX1500

IN THIS GUIDE

- Step 1: Begin | 1
- Step 2: Up and Running | 5
- Step 3: Keep Going | 8

Step 1: Begin

IN THIS SECTION

- Meet the SRX1500 | 2
- Install the SRX1500 | 2
- Power On | 4

In this guide, we walk you through how to rack an AC-powered SRX1500 with the power supplies preinstalled, power it up, and deploy it on your network using the J-Web Setup wizard. If you need instructions for installing power supplies, see the [SRX1500 Services Gateway Hardware Guide](#).

NOTE: Are you interested in getting hands-on experience with the topics and operations covered in this guide? Visit [Juniper Networks Virtual Labs](#) and reserve your free sandbox today! You'll find the Junos Day One Experience sandbox in the stand alone category.

Meet the SRX1500

The Juniper Networks® SRX1500 Services Gateway is a high-performance, next-generation firewall suited for enterprise campuses, regional headquarters, and data center networks. With twelve 1-GbE Ethernet ports, four 1-GbE SFP ports, and four 10-GbE SFP+ ports, the SRX1500 provides high onboard port densities with the flexibility of multiple Ethernet interface speeds.



Install the SRX1500

IN THIS SECTION

- [What's in the Box? | 2](#)
- [What Else Do I Need? | 2](#)
- [Rack It | 3](#)

What's in the Box?

- SRX1500 Services Gateway
- Power cord appropriate for your geographic location
- RJ-45 cable
- DB-9 adapter
- USB console cable
- Rack mount kit with:
 - Eight flat-head M4x6-mm Phillips mounting screws
 - Two mounting brackets

What Else Do I Need?

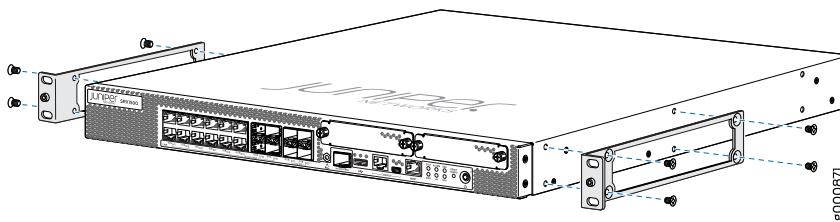
You'll also need:

- Someone to help you do the installation
- Eight rack mount screws appropriate for your rack
- A power cord retainer
- A number two Phillips (+) screwdriver

Rack It

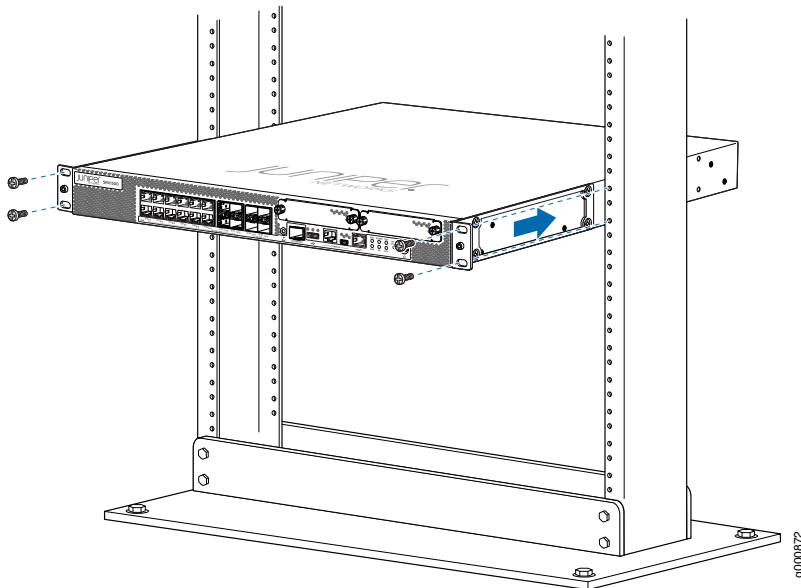
Here's how to install the SRX1500 in a rack:

1. Review [General Safety Guidelines and Warnings](#)
2. Wrap and fasten one end of the electrostatic discharge (ESD) grounding strap around your bare wrist, and connect the other end to a site ESD point.
3. Attach the mounting brackets to the sides of the SRX1500 using the eight M4x6-mm Phillips flat-head mounting screws.



4. Lift the SRX1500 and position it in the rack. Line up the bottom hole in each mounting bracket with a hole in each mounting rail, making sure the SRX1500 is level.

5. While you're holding the SRX1500 in place, have a second person insert and tighten the rack mount screws to secure the mounting brackets to the mounting rails. Make sure they tighten the screws in the two bottom holes first and then tighten the screws in the two top holes.

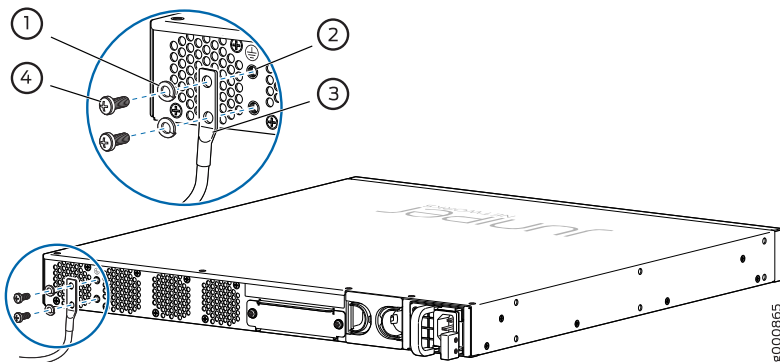


6. Double-check that the mounting brackets on each side of the rack are level.

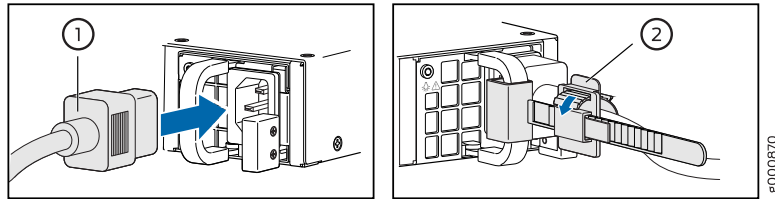
Power On

Now that you've installed your SRX1500 in the rack, you're ready to connect it to power.

1. Attach an ESD grounding strap to your bare wrist, and then connect the strap to the ESD point on the SRX1500 front panel.
2. Attach a grounding cable to earth ground and then attach it to the SRX1500's grounding points on the rear panel.



3. Plug the power cord into the SRX1500 rear panel. Use a power cord retainer (not included) to hold the power cord in place.



4. If the AC power source outlet has a power switch, turn it off.
5. Plug the other end of the power cord to the AC power source outlet.
6. If the AC power source outlet has a power switch, turn it on.

The SRX1500 powers up as soon as you connect it to AC power. It doesn't have a power switch. When the **PWR** LED on the front panel is solid green and the **RPS** LED glows solid green, the SRX1500 is ready to use.

Step 2: Up and Running

IN THIS SECTION

- [Configure Root Authentication | 6](#)
- [Plug and Play | 7](#)
- [Customize the Basic Configuration | 7](#)

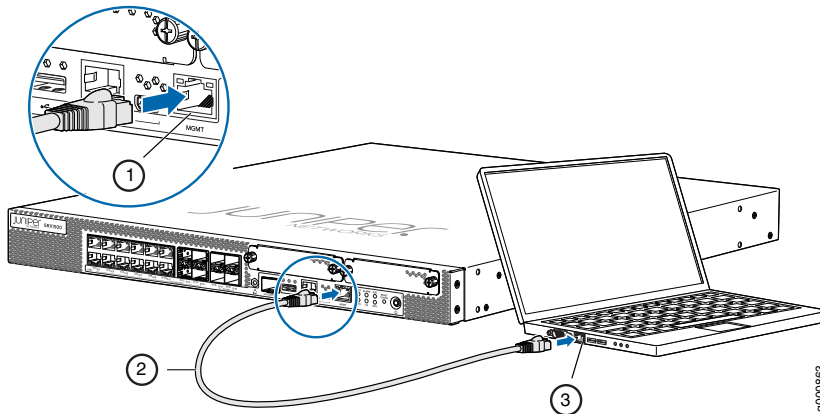
Now that the SRX1500 is powered on, let's do some initial configuration to get the device up and running on the network. It's simple to provision and manage the SRX1500 and other devices on your network. You can choose the configuration tool that's right for you:

- J-Web, Juniper Networks Setup wizard that is preinstalled on the SRX1500. We show you how to do the initial configuration using J-Web.
- Juniper Sky™ Enterprise, Juniper Networks-hosted public cloud-based Software as a Service (SaaS) solution. You'll need to have a Juniper Sky Enterprise subscription service before you can use it to configure the SRX1500. For more information, check out the [Juniper Sky Enterprise Getting Started Guide](#).

- Juniper Networks Contrail Service Orchestration (CSO). To use CSO, you'll need an authentication code. See the [Contrail Service Orchestration \(CSO \) Deployment Guide](#).
- CLI commands. See [Configuring the SRX1500 Services Gateway Using the CLI](#).

Configure Root Authentication

1. Connect the management port (**MGMT**) on the SRX1500 front panel to the Ethernet port on your laptop or PC.



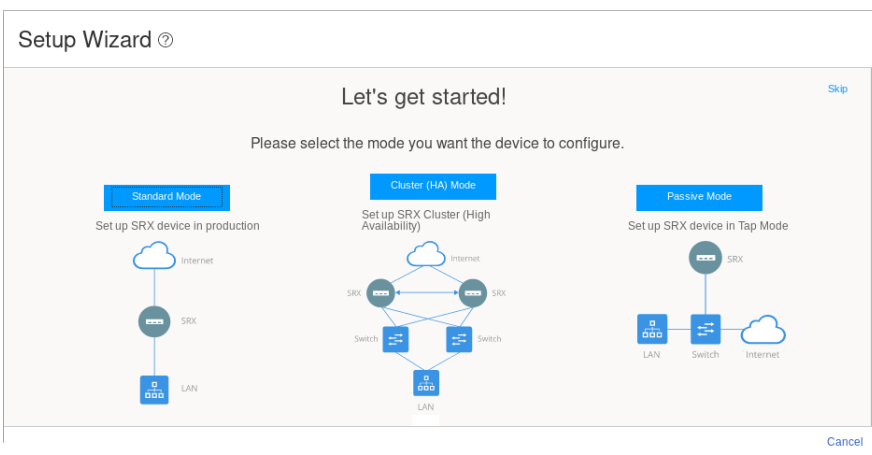
2. Manually configure an IP address in the 192.168.1.0/24 network.

Be sure you don't assign the IP address 192.168.1.1 to the laptop or PC, because this is the IP address assigned to the SRX1500.

3. Set the root authentication password:

- a. Open a browser and type **https://192.168.1.1**. You don't need to log in.

The J-Web Setup wizard opens on your screen.



- b. Click **Skip** in the upper-right corner of the Setup wizard. The Device Password page displays.

Device Password

With super user permissions for your root account, you can change any of the system settings. Please set your root password before you commit any configuration changes. We recommend that you do NOT use the root account to manage your SRX device as a best practice. You can add user accounts below in user management section.

Username: root

Password*

Confirm Password*

Cancel OK

- c. Type a root authentication password and click **OK**. The J-Web login page appears.

Plug and Play

The SRX1500 already has factory-default settings configured right out of the box to make it a plug-and-play device. So all you have to do to get the SRX1500 up and running is connect it to your LAN and WAN networks. Here's how:

1. Connect the WAN network to port 0/0.
2. Connect the LAN network to port 0/1.
3. Check to see if the SRX1500 is connected to the Internet. Go to <http://www.juniper.net>. If the page doesn't load, check the Internet connection.

After you complete these steps, you can start using the SRX1500 on your network right away. You can go back and customize settings anytime. The J-Web Setup wizard is always available to you.

Customize the Basic Configuration

Have this information handy before you begin customizing the settings for your network:

- Hostname
- Root authentication password
- IP address for the NTP server
- IP address for the DNS server
- IP address for the management interface

Log in to J-Web and select **Configure > Setup Wizard** to launch the Setup wizard. Select the configuration mode that's right for you. You can then follow the screens as they appear in the Setup wizard.

- **Standard**—Configure basic security settings for the SRX1500.
- **Cluster (HA)**—Set up the SRX1500 in chassis cluster mode.
- **Passive**—Set up the SRX1500 in Tap mode. Tap mode enables the SRX1500 to passively monitor traffic flows across a network.

Step 3: Keep Going

IN THIS SECTION

- [What's Next? | 8](#)
- [General Information | 9](#)
- [Learn With Videos | 9](#)

Congratulations! Your SRX1500 is configured and ready to go. Here are some things you can do next.

What's Next?

If you want to	Then
Change configuration settings, get another device up and running, or both	Log in to J-Web and use the wizard. Alternatively, you can use the more advanced configuration features offered by Juniper Contrail Service Orchestration (CSO) and Juniper Sky Enterprise. To use these services, you'll need an account and activation code. Check out the Contrail Service Orchestration (CSO) Deployment Guide and the Juniper Sky Enterprise Getting Started Guide .
Set up your SRX1500 with advanced security measures to protect and defend your network	Visit Day One: SRX Series Up and Running With Advanced Security Services
Manage software upgrades on your SRX1500	See Installing Software on SRX Series Devices
See, automate, and protect your network with Juniper Security	Visit the Security Design Center

Get hands-on experience with the procedures covered in this guide

Visit [Juniper Networks Virtual Labs](#) and reserve your free sandbox. You'll find the Junos Day One Experience sandbox in the stand alone category.

General Information

If you want to	Then
Download, activate, and manage your software licenses to unlock additional features for your SRX services gateway	See Activate Junos OS Licenses in the Juniper Licensing Guide
See all documentation available for the SRX1500	Visit the SRX1500 Documentation page in the Juniper TechLibrary
Configure the SRX1500 with the Junos OS CLI	Start with the Day One+ for Junos OS guide
Configure the SRX1500 using J-Web	See J-Web for SRX Series Documentation
Stay up-to-date on new and changed features and known and resolved issues.	See Junos OS Release Notes

Learn With Videos

Our video library continues to grow! We've created many, many videos that demonstrate how to do everything from install your hardware to configure advanced Junos OS network features. Here are some great video and training resources that will help you expand your knowledge of Junos OS.

If you want to	Then
Get short and concise tips and instructions that provide quick answers, clarity, and insight into specific features and functions of Juniper technologies	See Learning with Juniper on Juniper Networks main YouTube page
View a list of the many free technical trainings we offer at Juniper	Visit the Getting Started page on the Juniper Learning Portal

Juniper Networks, the Juniper Networks logo, Juniper, and Junos are registered trademarks of Juniper Networks, Inc. in the United States and other countries. All other trademarks, service marks, registered marks, or registered service marks are the property of their respective owners. Juniper Networks assumes no responsibility for any inaccuracies in this document. Juniper Networks reserves the right to change, modify, transfer, or otherwise revise this publication without notice. Copyright © 2021 Juniper Networks, Inc. All rights reserved. Rev. 04, September 2021.