

# Quick Start

---

## SSR130

### IN THIS GUIDE

- [Step 1: Begin | 1](#)
- [Step 2: Up and Running | 5](#)
- [Step 3: Keep Going | 9](#)

## Step 1: Begin

### IN THIS SECTION

- [Meet the SSR130 | 2](#)
- [Onboarding the SSR130 | 2](#)
- [Onboard the SSR130 Using the Mist AI Mobile App | 3](#)
- [Onboard the SSR130 Using a Web Browser | 3](#)

This guide walks you through the simple steps to get a new cloud-ready Juniper Networks® SSR130 router up and running in the Juniper Mist™ cloud portal. You can onboard a single device using your mobile phone, or one or more devices using your computer. Once onboarded, we'll walk you through the steps to create a basic configuration.

You'll need your Juniper Mist WAN Assurance subscription and your login credentials for the Juniper Mist portal.

---

**NOTE:** Before you begin, you must set up your organization and sites and activate your subscriptions. For more information, see [Create a Mist Account and Organization](#).

## Meet the SSR130

The Juniper Networks SSR130 network appliance is part of the Juniper® Session Smart™ Routing portfolio. The SSR130 features six 1 GbE ports and two 1 GbE RJ-45/SFP combo ports.

The SSR130 runs the FIPS 140-2 Level 1 compliant Juniper® Session Smart™ Routing (SSR) software, which provides secure and resilient WAN connectivity.

The SSR130 is available in models with or without LTE support.



## Onboarding the SSR130

The SSR130 comes ready to install and manage using the [Juniper Mist™ Cloud portal](#). You can onboard one or more routers using your computer, or a single router using your mobile phone.

To onboard your SSR130 using your mobile phone, see ["Onboard the SSR130 Using the Mist AI Mobile App" on page 3](#).

To manually onboard your SSR130, see ["Onboard the SSR130 Using a Web Browser" on page 3](#).

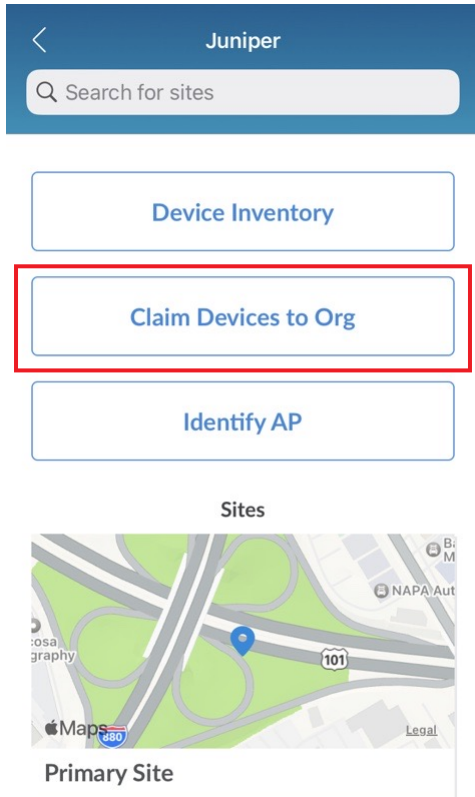
To perform either onboarding process, you will need to locate the SSR130 claim code label on the rear panel of your device.



## Onboard the SSR130 Using the Mist AI Mobile App

From your mobile phone:

1. Download and install the Mist AI app from the Google [Play Store](#) or Apple [App Store](#).
2. Open the Mist AI app and log in using your account credentials. If you do not have an account, see [Create a Mist Account and Organization](#) for details about creating one.
3. Select your organization.
4. Tap **Claim Devices to Org** and focus the camera on the QR code on the claim code label. The app automatically claims the device and adds it into your organization's inventory.



5. On the Organization screen, tap **Device Inventory → Routers → Unassigned**.

Review the MAC address.

### Onboarding Complete!

Fantastic, the SSR130 is in your inventory! To provision the SSR130, see ["Step 2: Up and Running" on page 5](#) and continue with Add the Network.

## Onboard the SSR130 Using a Web Browser

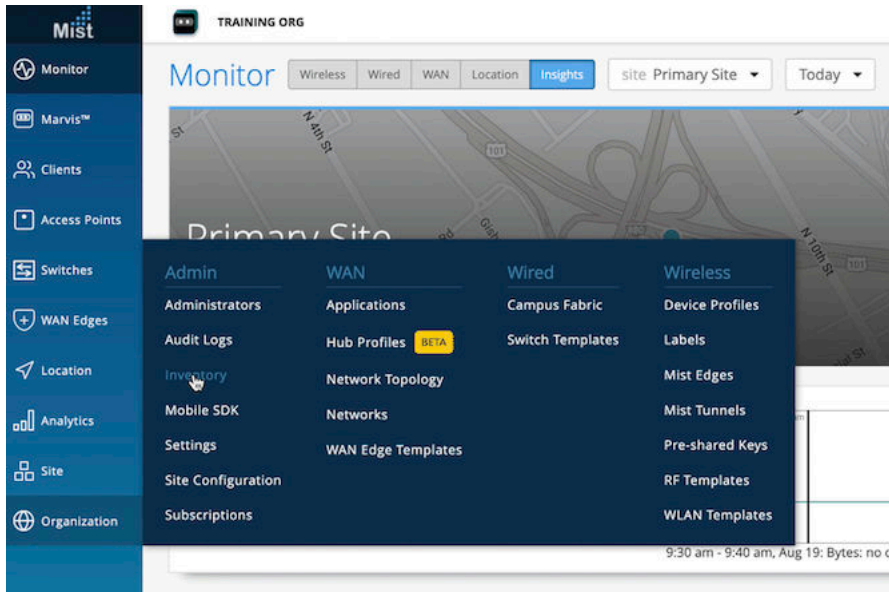
**Onboarding multiple switches**— When you purchase multiple switches, we provide you with an activation code along with your PO information. Make a note of this code.

**Onboarding a single switch**— Locate the QR code on your switch and make a note of the alphanumeric claim code directly above it.

1. Log in to your account at <https://manage.mist.com/>.

If you do not have an account, see [Create a Mist Account and Organization](#) for details about creating one.

2. Log in to your Mist organization's dashboard.



3. Navigate to your organization's inventory, and select the WAN tab at the top.
4. Select the **Claim WAN Edges** button in the upper right of the inventory screen.
5. Add the claim code into the list of devices to claim.
6. Clear the **Assign claimed WAN edges to site** check box. This places the SSR into inventory, to be assigned to a site later.
7. Click the **Claim** button to claim the SSR into your inventory.

If you claim multiple routers, expect a slight delay for the Router Claim Results window to pop up.

Review the information and **Close** the window.

View your new router or routers on the Inventory page. Expect to see the status as Disconnected.

## Onboarding Complete!

Fantastic, the SSR130 is in your inventory! To provision the SSR130, see ["Step 2: Up and Running" on page 5](#) and continue with Add the Network.

## Step 2: Up and Running

### IN THIS SECTION

- [Create a Template | 5](#)
- [Assign the Template to a Site | 6](#)
- [Assign the SSR130 to a Site | 7](#)
- [Install the SSR130 Hardware | 7](#)
- [Connect your SSR130 to the Mist Cloud | 8](#)

The SSR130 is onboarded to the Juniper Mist™ cloud. To provision the SSR130 with ZTP, log in to your Mist portal and begin the WAN configuration.

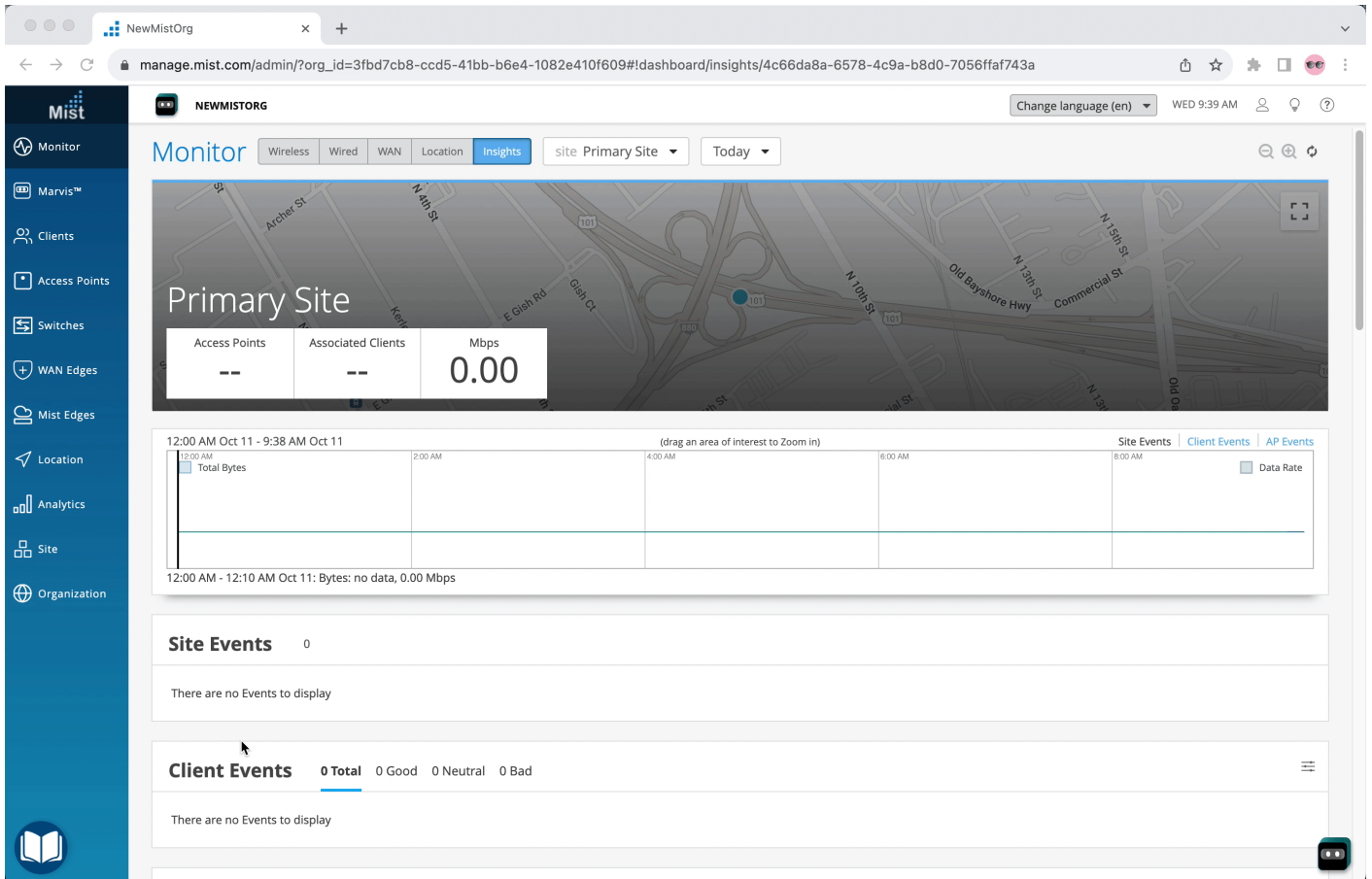
Configuring your SSR device is made simple through the use of the SSR WAN Edge Templates.

### Create a Template

The WAN Edge Templates provide you with the basic network configuration in a single step, and allow for re-usable and consistent configuration for every SSR device you deploy. The template provides device specific, preconfigured WAN interfaces, LAN interfaces, a traffic steering policy, and an application policy. You simply name the template and select the device type.

1. From the the organization sidebar menu, select **WAN Edge Templates**.
2. Select **Create Template** in the upper right.
3. Give the template a name.
4. Place a checkmark in the **Create from Device Model** box.
5. Select your SSR model from the dropdown.
6. Click **Create**.

The device template is displayed. Scroll down through the template to see the preconfigured WAN interfaces, LAN interfaces, Traffic Steering, and Application Policies. Great job! You now have a working WAN Edge template you can apply to many sites and devices across your organization.



## Assign the Template to a Site

Now that you have set up a template, you need to assign it to the site where your SSR will be deployed.

1. Scroll to the top and click **Assign to Site**.
2. Select the site from the list where you want the template applied.
3. Click **Apply**.

The screenshot shows the Mist Management Console interface for configuring a WAN Edge Template. The browser address bar shows the URL: `manage.mist.com/admin/?org_id=aad867cc-435e-4b8c-add8-f2599a1ceb07#gatewayTemplates/detail/389f42a3-ecab-435b-9b83-33a273b69dc3`. The page title is "WAN Edge Templates : StandardTemplate".

**INFO**

NAME	StandardTemplate
TYPE	Standalone

**APPLIES TO SITES**

0 sites 0 wan edges [Assign to Sites](#)

**IP CONFIGURATION (OUT OF BAND)**

**NODE0/STANDALONE**

IP Address  
☒ DHCP ☐ Static

VLAN ID

**NODE1**

IP Address  
☒ DHCP ☐ Static

VLAN ID

**NTP**

NTP Servers  
  
 (Comma-separated IPs/Hostnames)

**DNS SETTINGS**

DNS Servers  
  
 (Comma-separated IPs and Max 3)

DNS Suffix (SRX Only)  
  
 (Comma-separated Domains and Max 3)

**SECURE EDGE CONNECTORS BETA**

0 Providers

NAME	PROVIDER
There are no Providers defined yet	

[Add Provider](#)

Great work! All that remains is to associate the SSR130 with a site.

## Assign the SSR130 to a Site

Once you associate the SSR130 with a site and a template, the working configuration will be complete.

1. Select Organization on the left sidebar, and navigate to your organization's WAN Edges Inventory.
2. Select your SSR130 and assign it to your site.
3. If you are configuring a **Mist-managed** router (SSR Software version 6.x and greater), check the **Manage configuration with Mist** check box. For version 5.4.x and greater conductor-managed routers, make sure there is **no** check mark in the **Manage Configuration from Mist** under **Manage Configuration**.
4. Select **Assign to Site**.

**Congratulations** you now have a Mist-claimed SSR130, and a basic configuration ready to send to your device!

## Install the SSR130 Hardware

Your SSR130 installation has specific features that must be installed depending on your use and environment . Refer to the [SSR130 Hardware Installation Guide](#) to complete the following procedures:

- Rack, Wall, or Surface Mounting

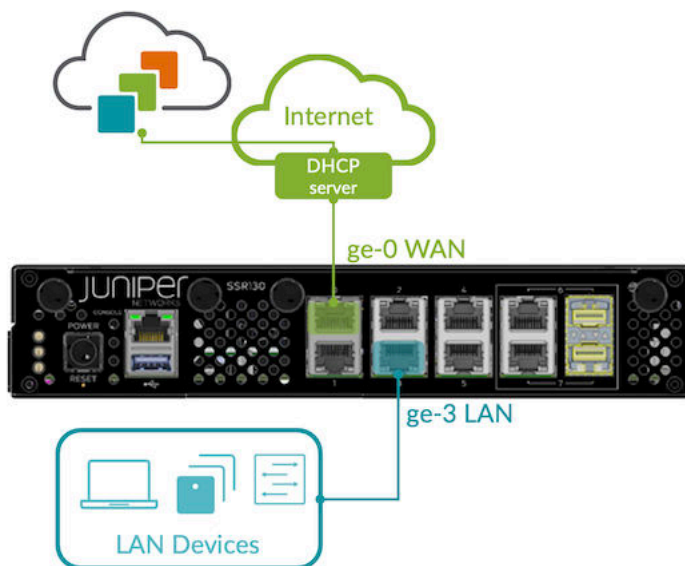
- LTE Antenna Install
- SIM Card Install
- Connecting Power

Please return here after completing those procedures to complete the network connections.

## Connect your SSR130 to the Mist Cloud

Your SSR130 uses port 0 (ge-0-0) as a default WAN port to contact Mist for zero-touch provisioning (ZTP). You'll need to set up port 3 (ge-0-3) with a LAN network.

1. Connect SSR port 0 to an Ethernet WAN link that can provide:
  - DHCP address assignment
  - Connectivity to the Internet and Mist (see [Firewall Requirements](#))
2. Connect SSR port 3 to your LAN devices, including:
  - Mist-managed Juniper EX switches
  - Mist APs
  - User devices



Great job, your SSR130 is now connected to the Mist cloud! In just a few minutes, Mist will send the template-driven configuration down to your device. Once the configuration has been applied, it will begin forwarding sessions from LAN to WAN as described by your policy.

Head over to the WAN Edges menu on the Mist sidebar, select your device, and watch events as the device completes ZTP.

As your client devices connected to the LAN are assigned addresses from the WAN Edge DHCP server and begin sending sessions, telemetry will populate the insights page, and Marvis will start analyzing it on your behalf.



For conductor-managed devices, additional views for Cloud Telemetry are configurable in the SSR GUI and PCLI.

## Step 3: Keep Going

### IN THIS SECTION

- [What's Next? | 9](#)
- [General Information | 9](#)
- [Learn with Videos | 10](#)

Congratulations! Now that you've done the initial configuration, your SSR130 is ready to use. Here are some things you can do next:

### What's Next?

If you want to	Then
Get an overview of the SSR configuration and how it is managed	See the <a href="#">WAN Assurance Configuration Overview</a> section of the <b>Juniper Mist WAN Assurance Configuration Guide</b> in the Juniper Networks TechLibrary

### General Information

If you want to	Then
See all documentation available for the SSR130	See the <a href="#">SSR130 Documentation</a> in the Juniper Networks TechLibrary
Get more details about installing and maintaining the SSR130 hardware	See the <a href="#">SSR130 Hardware Guide</a>

*(Continued)*

If you want to	Then
See all documentation available for SSR software	Visit <a href="#">Session Smart Router Documentation</a> in the Juniper Networks TechLibrary
Stay up-to-date about new and changed features and known and resolved issues	See the <a href="#">SSR Release Notes</a>

## Learn with Videos

Here are some great video and training resources that will help you expand your knowledge of SSR Software.

If you want to	Then
Learn about Virtual Router Redundancy Protocol for the SSR	See <a href="#">SSR Virtual Router Redundancy Protocol</a> on the SSR YouTube page
Learn about BFD for Traditional Routing	See <a href="#">BFD for Traditional Routing</a> on the SSR YouTube page
Learn about Configuration Concurrency with the SSR	See <a href="#">Configuration Concurrency</a> on the SSR YouTube page
Learn about Service Route Redundancy and Vectors	See <a href="#">Service Route Redundancy and Vectors</a> on the SSR YouTube page
Get short, concise tips and instructions that provide quick answers, clarity, and insight into specific features and functions of Juniper technologies	See <a href="#">Learning with Juniper</a> on Juniper Networks main YouTube page
View a list of free technical training offered by Juniper	Visit the <a href="#">Getting Started</a> page on the Juniper Learning Portal