

# Day One+

## SRX320

### IN THIS GUIDE

- Step 1: Begin | 1
- Step 2: Up and Running | 6
- Step 3: Keep Going | 10

## Step 1: Begin

### IN THIS SECTION

- Meet the SRX320 | 2
- Install the SRX320 in a Rack | 2
- Power On | 5

In this guide, we walk you through how to install the SRX320 in a rack, power it up, and deploy it on your network using the J-Web Setup wizard. We've validated these procedures using vSRX on Junos OS Release 20.4R1.

**NOTE:** Are you interested in getting hands-on experience with the topics and operations covered in this guide? Visit [Juniper Networks Virtual Labs](#) and reserve your free sandbox today! You'll find the Junos Day One Experience sandbox in the stand alone category.

## Meet the SRX320

The Juniper Networks® SRX320 Services Gateway provides next-generation security, routing, switching, and WAN connectivity in a small desktop device. The SRX320 features eight 1GbE ports, including six RJ-45 network ports and two small form-factor pluggable (SFP) transceiver ports. The SFP ports are MACsec capable.



## Install the SRX320 in a Rack

### IN THIS SECTION

- [What's in the Box? | 2](#)
- [What Else Do I Need? | 3](#)
- [Rack It | 3](#)

You can install the SRX320 on a table or desk, on a wall, or in a rack. We show you how to install it in a rack.

### What's in the Box?

- SRX320 Services Gateway
- A power cord appropriate for your geographic location
- An RJ-45 cable
- A DB-9 adapter
- A USB cable

## What Else Do I Need?

To mount the SRX320 in a rack, you'll need to order the rack mount kit appropriate for your installation. The required rack mount kit depends on whether you have a PoE or non-PoE SRX320 model, and whether you already have a power supply adapter tray. Check out the following table to see which rack mount kit you need.

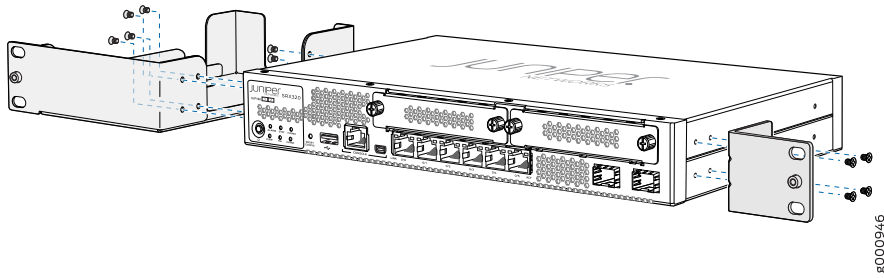
Model	Rack Mount Kit with Power Supply Adapter Tray	Rack Mount Kit Without Power Supply Adapter Tray
SRX320 (non-PoE model)	SRX320-RMK0  Includes: <ul style="list-style-type: none"> <li>• Twelve flat-head M3x5mm Phillips mounting screws</li> <li>• One mounting bracket</li> <li>• One power supply adapter tray and two adapter stopper brackets</li> </ul>	SRX320-RMK1  Includes: <ul style="list-style-type: none"> <li>• Eight flat-head M3x5mm Phillips mounting screws</li> <li>• Two mounting brackets</li> </ul>
SRX320 (PoE model)	SRX320-P-RMK0  Includes: <ul style="list-style-type: none"> <li>• Thirteen flat-head M3x5mm Phillips mounting screws</li> <li>• One mounting bracket</li> <li>• One power supply adapter tray and three adapter stopper brackets</li> </ul>	SRX320-P-RMK1  Includes: <ul style="list-style-type: none"> <li>• Eight flat-head M3x5mm Phillips mounting screws</li> <li>• Two mounting brackets</li> </ul>

You'll also need to provide:

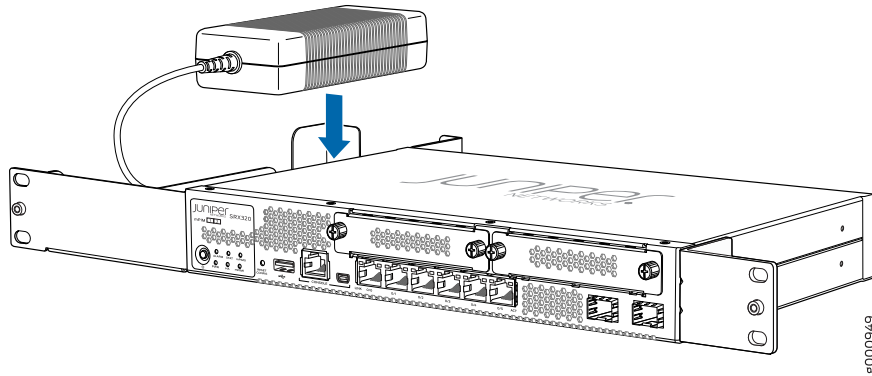
- Someone to help you do the installation
- Rack mount screws appropriate for your rack
- A number 2 Phillips (+) screwdriver

## Rack It

1. Review [General Safety Guidelines and Warnings](#).
2. Wrap and fasten one end of the electrostatic discharge (ESD) grounding strap around your bare wrist, and connect the other end to a site ESD point.
3. Attach the mounting bracket and power supply adapter tray to the sides of the SRX320 using the screws that came with the rack mount kit and the screwdriver.

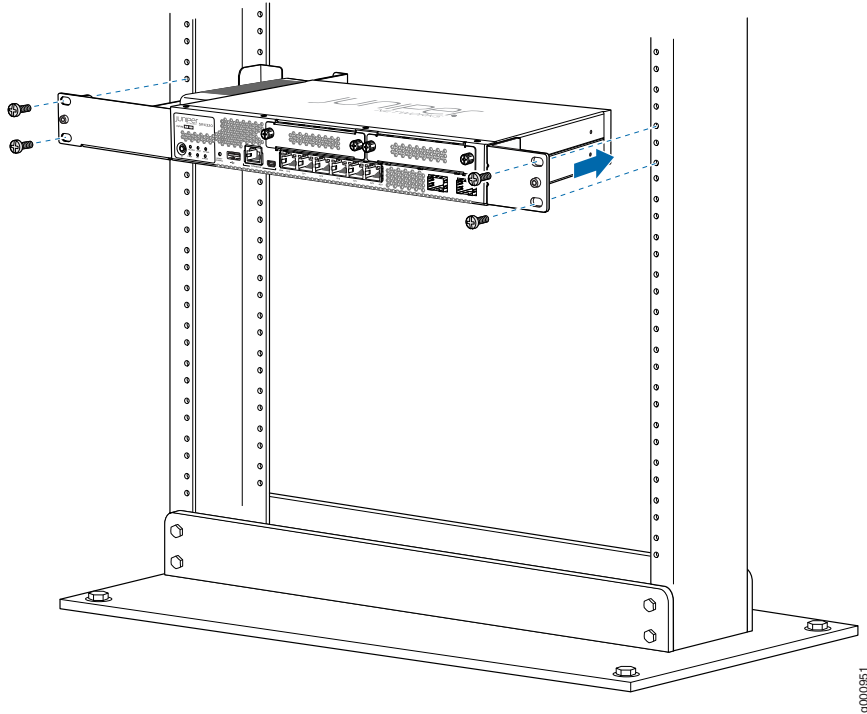


4. Place the power supply adapter in the tray.



5. Lift the SRX320 and position it in the rack. Line up the bottom hole in the mounting brackets with a hole in each rack rail, making sure the SRX320 is level.

6. While you're holding the SRX320 in place, have a second person insert and tighten the rack mount screws to secure the adapter tray and mounting brackets to the mounting rails. Make sure to tighten the screws in the two bottom holes first and then tighten the screws in the two top holes.



7. Check that the mounting brackets on each side of the rack are level.

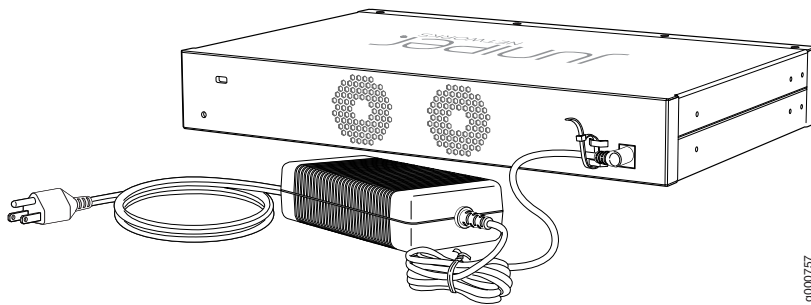
## Power On

Now that you've installed the SRX320 in the rack, you're ready to connect it to power.

1. Wrap and fasten one end of the electrostatic discharge (ESD) grounding strap around your bare wrist, and connect the other end to a site ESD point.

**NOTE:** If the SRX320 has a supply adapter tray, you can perform step 2 and 3 with the power supply adapter seated in the tray.

2. Plug the DC connector end of the power cable into the power connector at the back of the SRX320.



3. Plug the AC adapter end of the power cable into the power supply adapter.
4. If the AC power source outlet has a power switch, turn it off.
5. Plug the power cord into the AC power source outlet.
6. If the AC power source outlet has a power switch, turn it on.

The SRX320 powers up as soon as you connect it to power. When the **STAT** LED on the front panel is lit solid green, the SRX320 is ready to use.

## Step 2: Up and Running

### IN THIS SECTION

- [Configure Root Authentication | 7](#)
- [Plug and Play | 9](#)
- [Customize the Basic Configuration with J-Web | 9](#)

Now that the SRX320 is powered on, let's do some initial configuration to get it up and running on the network. It's simple to provision and manage the SRX320 and other devices on your network. Choose the configuration tool that's right for you:

- J-Web, Juniper Networks Setup wizard that is preinstalled on the SRX320. We'll show you how to do the initial configuration using J-Web for Junos OS Release 19.4R3. If you're using Junos OS Release 19.2 or earlier, follow the initial configuration procedure in the [SRX320 Services Gateway Hardware Guide](#).
- Juniper Sky™ Enterprise, Juniper Networks-hosted public cloud-based Software as a Service (SaaS) solution. You'll need to have a Juniper Sky Enterprise subscription service before you can use it to configure the SRX320. For more information, check out the [Juniper Sky Enterprise Getting Started Guide](#).
- Contrail Service Orchestration (CSO). To use CSO, you'll need an authentication code. See the [Contrail Service Orchestration \(CSO\) Deployment Guide](#).

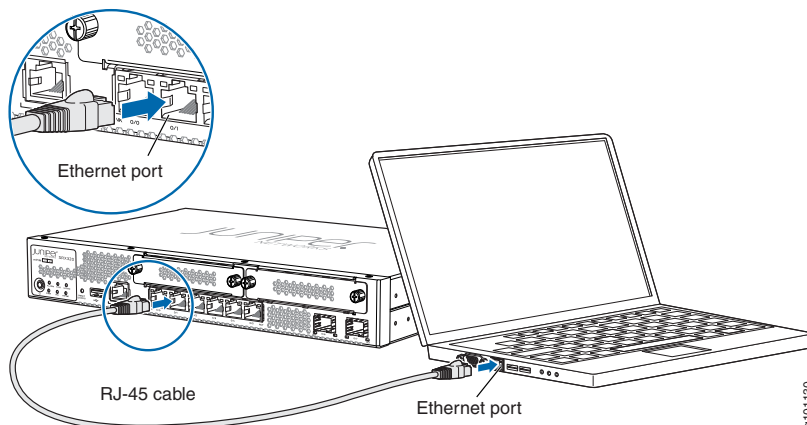
If you are using Junos OS Release 19.2 or earlier, you can use Juniper Networks Network Service Controller to configure the SRX320 with ZTP. Network Service Controller is a component of CSO. See [Configure the Device Using ZTP with Juniper Networks Network Service Controller](#).

- CLI commands. See [Initial Configuration Using the CLI](#) in the SRX320 Services Gateway Hardware Guide.

## Configure Root Authentication

1. Connect any of the SRX320 network ports numbered 0/1 through 0/6 to the Ethernet port on your laptop or PC.

**NOTE:** Do not use ports 0/0 and 0/7.



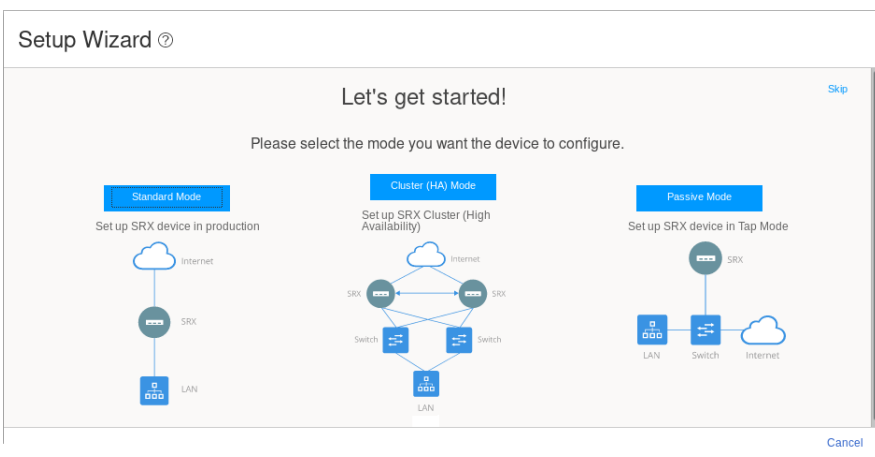
The SRX320 functions as a DHCP server and automatically assigns the laptop or PC an IP address on the 192.168.1.0/24 network.

2. If the laptop or PC is unable to get an IP address, manually configure an IP address in the 192.168.1.0/24 network.

Be sure you don't assign the IP address 192.168.1.1 to the laptop or PC, because this is the IP address assigned to the SRX320.

3. Set the root authentication password:

- a. Open a browser and type **https://192.168.1.1**. You don't need to log in. The J-Web Setup wizard opens on your screen.



- b. Click **Skip** at the upper-right corner of the Setup wizard. The Device Password page appears.

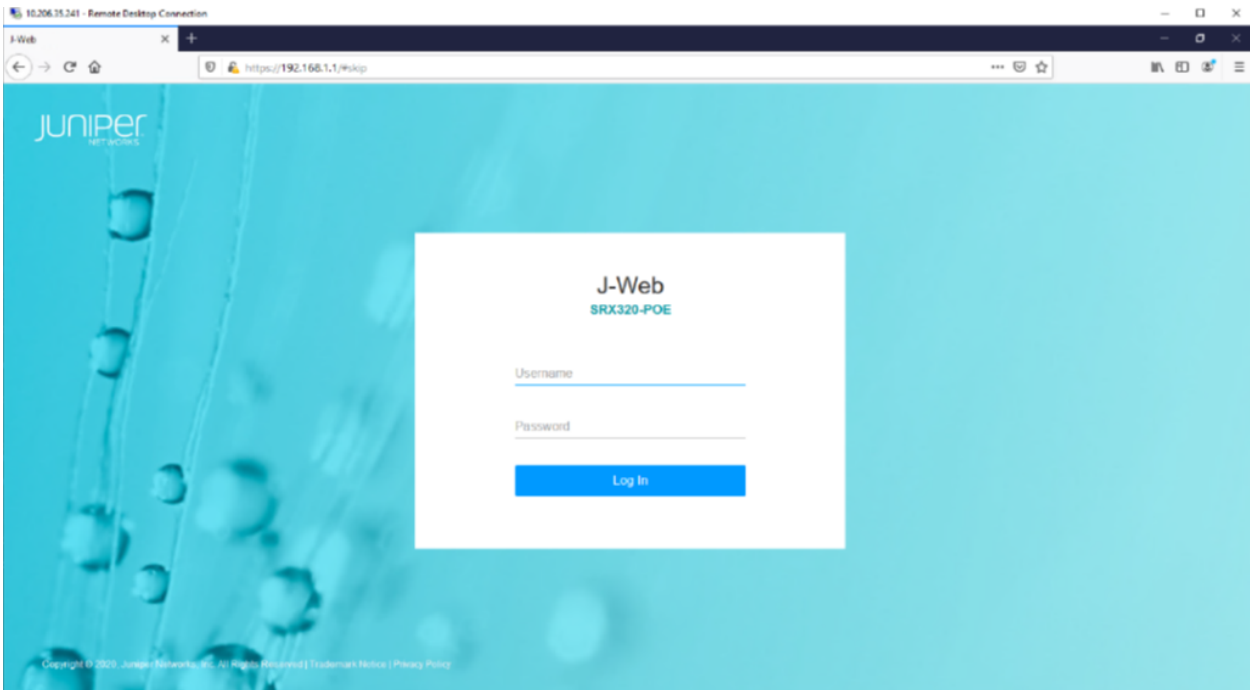
The screenshot shows the 'Device Password' configuration page. It contains the following elements:

- Username**: A text field with the value 'root'.
- Password\***: A text field with a password icon (eye) to its left.
- Confirm Password\***: A text field.
- At the bottom right, there are 'Cancel' and 'OK' buttons.

Below the title, there is a warning message: 'With super user permissions for your root account, you can change any of the system settings. Please set your root password before you commit any configuration changes. We recommend that you do NOT use the root account to manage your SRX device as a best practice. You can add user accounts below in user management section.'



- c. Type a root authentication password and click **OK**. The J-Web login page appears.



## Plug and Play

The SRX320 already has factory-default settings configured right out of the box to make it a plug-and-play device. So all you have to do to get the SRX320 up and running is connect it to your LAN and WAN. Here's how:

1. Connect the WAN network to port 0/0.
2. Connect the LAN network to any of the ports from 0/1 through port 0/6.
3. Check to see if the SRX320 is connected to the Internet. Go to <http://www.juniper.net>. If the page doesn't load, check the Internet connection.

Congratulations! Your SRX320 is now up and running on the network, and you can start using it right away!

## Customize the Basic Configuration with J-Web

Have this information handy before you begin customizing the settings for your network:

- Hostname
- IP address for the NTP server

- IP address for the DNS server
- IP address for the management interface

Log in to J-Web and select **Configure > Setup Wizard** to launch the Setup wizard. Select the configuration mode that's right for you. You can then follow the screens as they appear in the Setup wizard.

- **Standard**—Configure basic security settings for the SRX320.
- **Cluster (HA)**—Set up the SRX320 in chassis cluster mode.
- **Passive**—Set up the SRX320 in Tap mode. Tap mode enables the SRX320 to passively monitor traffic flows across a network.

## Step 3: Keep Going

### IN THIS SECTION

- [What's Next? | 10](#)
- [General Information | 11](#)
- [Learn With Videos | 11](#)

Congratulations! Your SRX320 is configured and ready to go. Here are some things you can do next.

### What's Next?

If you want to	Then
Change configuration settings, get another device up and running, or both	Log in to J-Web and use the wizard. Alternatively, you can use the more advanced configuration features offered by Juniper Contrail Service Orchestration (CSO) and Juniper Sky Enterprise. To use these services, you'll need an account and activation code. Check out the <a href="#">Contrail Service Orchestration (CSO ) Deployment Guide</a> and the <a href="#">Juniper Sky Enterprise Getting Started Guide</a> .
Set up your SRX320 with advanced security measures to protect and defend your network	Visit <a href="#">Day One: SRX Series Up and Running With Advanced Security Services</a>
Manage software upgrades on your SRX320	See <a href="#">Installing Software on SRX Series Devices</a>

If you want to	Then
See, automate, and protect your network with Juniper Security	Visit the <a href="#">Security Design Center</a>
Get hands-on experience with the procedures covered in this guide	Visit <a href="#">Juniper Networks Virtual Labs</a> and reserve your free sandbox. You'll find the Junos Day One Experience sandbox in the stand alone category.

## General Information

If you want to	Then
Download, activate, and manage your software licenses to unlock additional features for your SRX services gateway	See <a href="#">Activate Junos OS Licenses</a> in the <a href="#">Juniper Licensing Guide</a>
See all documentation available for the SRX320	Visit the <a href="#">SRX320 Documentation</a> page in the Juniper TechLibrary
Configure the SRX320 with the Junos OS CLI	Start with the <a href="#">Day One+ for Junos OS</a> guide
Configure the SRX320 using J-Web	See <a href="#">J-Web for SRX Series Documentation</a>
Stay up-to-date on new and changed features and known and resolved issues.	See <a href="#">Junos OS Release Notes</a>

## Learn With Videos

Our video library continues to grow! We've created many, many videos that demonstrate how to do everything from install your hardware to configure advanced Junos OS network features. Here are some great video and training resources that will help you expand your knowledge of Junos OS.

If you want to	Then
View a Web-based training video which provides an overview of the SRX320 and describes how to install and configure it	<a href="#">SRX300 and SRX320 Services Gateways Overview and Deployment (WBT)</a>
Get short and concise tips and instructions that provide quick answers, clarity, and insight into specific features and functions of Juniper technologies	See <a href="#">Learning with Juniper</a> on Juniper Networks main YouTube page

If you want to	Then
View a list of the many free technical trainings we offer at Juniper	Visit the <a href="#">Getting Started</a> page on the Juniper Learning Portal