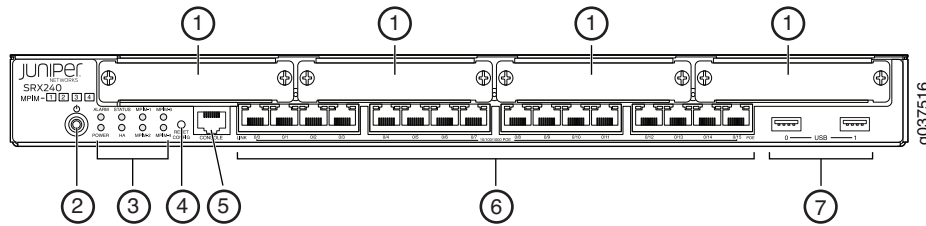


# SRX240 Services Gateway Quick Start

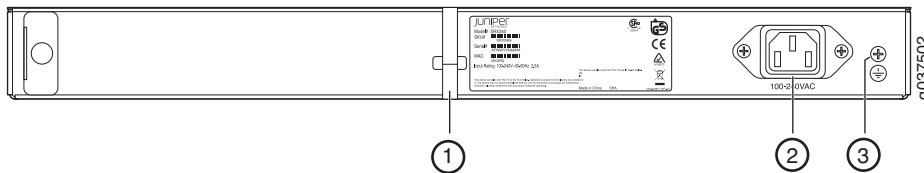
Follow the instructions in this quick start to connect the SRX240 Services Gateway to your network. For details, see the *SRX240 Services Gateway Hardware Guide* at [http://www.juniper.net/techpubs/en\\_US/release-independent/junos/information-products/pathway-pages/srx-series/product/index.html](http://www.juniper.net/techpubs/en_US/release-independent/junos/information-products/pathway-pages/srx-series/product/index.html).

## SRX240 Services Gateway Front Panel



Callout	Description	Callout	Description
1	Mini-PIM slots	5	Console port
2	Power button	6	Gigabit Ethernet (0/0 to 0/15) ports
3	LEDs (ALARM, POWER, STATUS, HA, mPIM)	7	USB ports
4	Reset Config button		

## SRX240 Services Gateway Back Panel



Callout	Description	Callout	Description
1	Cable tie holder	3	Grounding point
2	Power supply input		

## SRX240 Services Gateway Models

The following models of the SRX240 Services Gateway are available:

Device	DDR Memory	Power over Ethernet
SRX240B	512 MB	No
SRX240B2	1 GB	No
SRX240H	1 GB	No
SRX240H2	2 GB	No
SRX240H-DC	1 GB	No
SRX240H2-DC	2 GB	No
SRX240H-POE	1 GB	Yes
SRX240H2-POE	2 GB	Yes
SRX240H-TAA	1 GB	No
SRX240H2-TAA	2 GB	No
SRX240H-POE-TAA	1 GB	Yes
SRX240H2-POE-TAA	2 GB	Yes

**NOTE:** On the SRX240H-POE, SRX240H2-POE, SRX240H-POE-TAA, and SRX240H2-POE-TAA models, Power over Ethernet (PoE) of a maximum of 150 watts is supported on all the 16 ports (0/0 through 0/15).

## Connecting and Configuring the SRX Series Services Gateway

Follow these instructions to connect and set up the SRX240 Services Gateway. The LEDs on the front of the device indicate the status of the device.

### Configuration Overview

The SRX240 Services Gateway requires the following basic configuration settings to function:

- Interfaces must be assigned IP addresses.
- Interfaces must be bound to zones.
- Policies must be configured between zones to permit or deny traffic.
- Source NAT rules must be set.

The device has the following default configuration set when you power it on for the first time. To use the device, you do not need to perform any initial configuration.



### Factory-Default Settings for Initial Configuration:

Port Label	Interface	Security Zones	DHCP State	IP Address
0/0	ge-0/0/0	untrust	client	unassigned
0/1 to 0/15	ge-0/0/1 to ge-0/0/15	trust	server	192.168.1.1/24

### Factory-Default Settings for Security Policies:

Source Zone	Destination Zone	Policy Action
trust	untrust	permit
trust	trust	permit
untrust	trust	deny

### Factory-Default Settings for NAT Rule:

Source Zone	Destination Zone	Policy Action
trust	untrust	source NAT to untrust zone interface

**NOTE:** Source NAT translates the source address for packets coming from any number of hosts on a private network to one public IP address.

### Task 1: Connect the Power Cable and a Power Source

Connect the power cable to the device and a power source. We recommend using a surge protector. Note the following indications:

- **POWER LED (green):** The device is receiving power.
- **STATUS LED (green):** The device is operating normally.
- **ALARM LED (yellow):** The device is operating normally, and a rescue configuration might not have been set. This is not a panic condition.

**NOTE:** After a rescue configuration has been set, a yellow ALARM LED indicates a minor alarm, and a solid red ALARM LED indicates a major problem on the services gateway.

- **mPIM LED (off):** The Mini-Physical Interface Module (Mini-PIM) is not present or is not detected by the device. If this LED is green and steadily on, it indicates that the Mini-PIM is functioning normally.

**NOTE:** You must allow the device between 5 and 7 minutes to boot after you power it on. Wait until the STATUS LED is solid green before proceeding to the next task.

### Task 2: Connect the Management Device

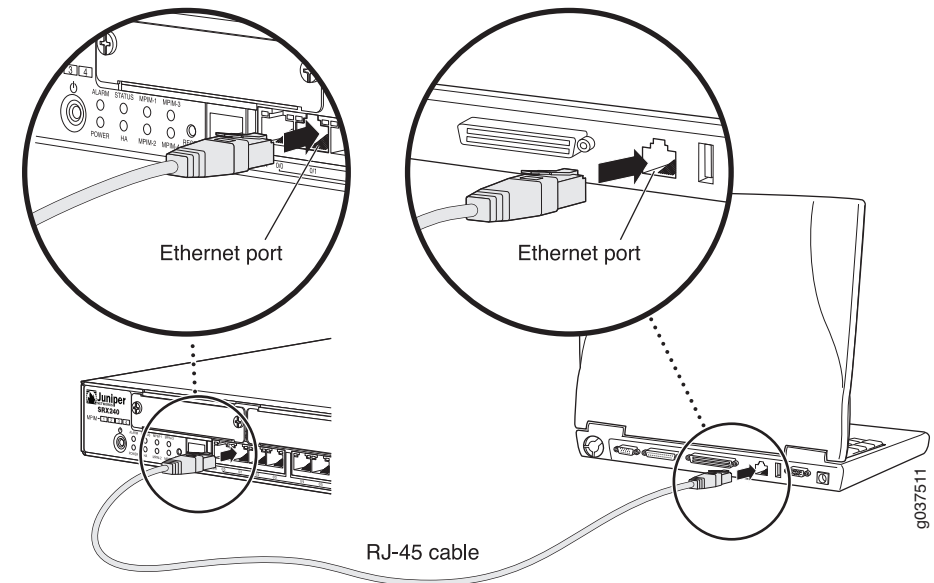
Use one of the following methods to connect the management device to the services gateway:

- **Method 1:** Connect an RJ-45 cable (Ethernet cable) from any one port from 0/1 through 0/15 (interfaces ge-0/0/1 and ge-0/0/15) on the front panel to the Ethernet port on the management device (workstation or laptop). We recommend this connection method. If you are using this method to connect, proceed to Task 3.

- **Method 2 :** Connect an RJ-45 cable (Ethernet cable) from the port labeled CONSOLE to the supplied DB-9 adapter, which then connects to the serial port on the management device (serial port settings: **9600 8-N-1-N**).

If you are using this method to connect, proceed with the CLI configuration instructions in the *Getting Started Guide for the Branch SRX Series* at [http://www.juniper.net/techpubs/en\\_US/release-independent/junos/information-products/pathway-pages/srx-series/product/index.html](http://www.juniper.net/techpubs/en_US/release-independent/junos/information-products/pathway-pages/srx-series/product/index.html).

### Connecting a Management Device



### Task 3: Ensure That the Management Device Acquires an IP Address

After you connect the management device to the services gateway, the DHCP server process on the services gateway automatically assigns an IP address to the management device. Ensure that the management device acquires an IP address on the 192.168.1.0/24 subnetwork (other than 192.168.1.1) from the services gateway.

**NOTE:** The services gateway functions as a DHCP server and assigns an IP address to the management device.

- If an IP address is not assigned to the management device, manually configure an IP address on the 192.168.1.0/24 subnetwork. Do not assign 192.168.1.1 as the IP address to the management device because this IP address is assigned to the services gateway. By default, the DHCP server is enabled on the Layer 3 VLAN interface, (IRB) vlan.0 (ge-0/0/1 to ge-0/0/15), which is configured with an IP address of 192.168.1.1/24.
- When an SRX240 Services Gateway is powered on for the first time, it boots using the factory-default configuration.

## Task 4: Ensure That the Services Gateway Acquires an IP Address

Use one of the following methods to obtain an IP address for the services gateway:

### ■ Method 1: Obtaining a Dynamic IP Address on Your Services Gateway

Use the port labeled **0/0** (interface ge-0/0/0) to connect to your Internet Service Provider (ISP). Your ISP assigns an IP address to the services gateway using the DHCP process.

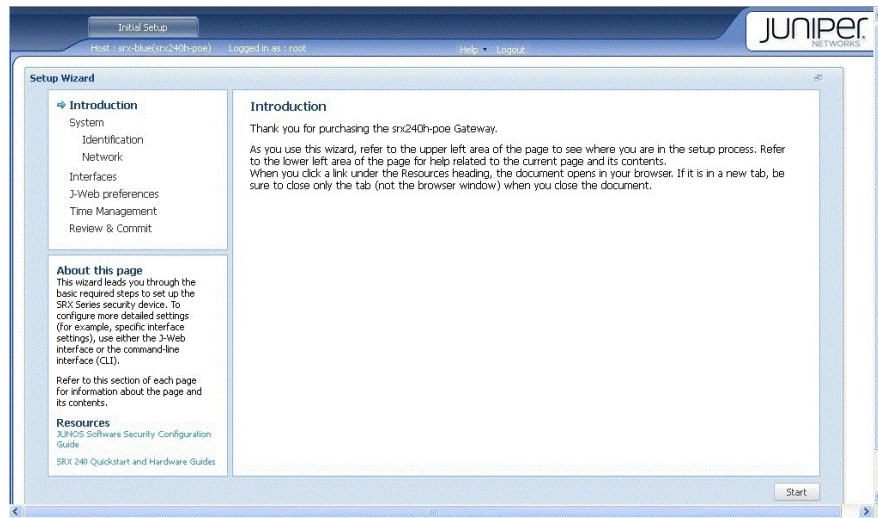
If you use this method, skip Task 6, and go to Task 7.

### ■ Method 2: Obtaining a Static IP Address on Your Services Gateway

Use the port labeled **0/0** (interface ge-0/0/0) to connect to your ISP. Your ISP will have provided a static IP address. You must configure the static IP address on the services gateway as described in Task 6, Steps 1 through 4. If you use this method, the services gateway will not receive an IP address using the DHCP process.

## Task 5: Access the J-Web Interface

1. Launch a Web browser from the management device.
2. Enter **http://192.168.1.1** as the browser address. The J-Web login page appears.
3. Specify the default username as **root**. Do not enter any value in the Password field.
4. Click **Log In**. The first time you log in, the J-Web Initial Setup page appears.
5. To begin configuring your services gateway, click the **Start** button in the lower right corner of the page and continue to configure your service gateway.



## Task 6: Configure the Basic Settings

Configure the basic settings, such as hostname, domain name, and root password, for your services gateway.

**IMPORTANT:** Ensure that you have configured the IP address, root authentication, and default gateway before you apply the configuration.

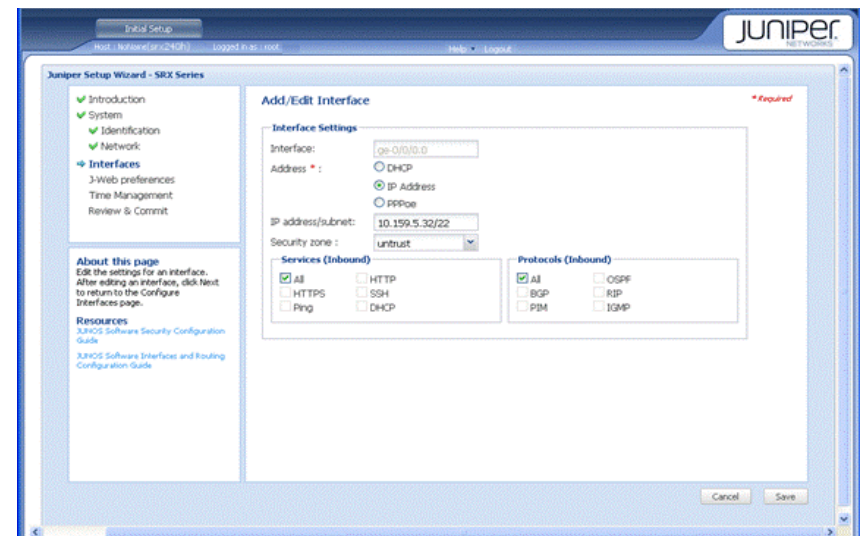
**NOTE:** All fields marked with an asterisk (\*) are mandatory.

- All network and management access settings are optional.

If you have followed Method 1 of Task 4 (Obtaining a Dynamic IP Address on Your Services Gateway), skip all the other steps and go to Task 7.

If you have followed Method 2 of Task 4 (Obtaining a Static IP Address on Your Services Gateway), ensure that you make the following J-Web modifications:

1. On the Configure System: Network Settings page of the Juniper Setup Wizard-SRX Series, enter the IP address of the device that connects your device with WAN (service provider) in the Default Gateway field, and enter server names in the DNS Name Servers list. Your ISP provides the IP address for the gateway and the server names. Click **Next** to continue.
2. On the Configure Interfaces page of the wizard, select the **ge-0/0/0.0** interface and click **Edit**.
3. On the Add/Edit interface page, next to Address, clear **DHCP** and select **IP Address**.
4. In the IP Address/subnet field, enter the IP address provided by your ISP. Enter the IP address in the format *a.b.c.d/xx*, where *xx* is the subnet prefix.



**NOTE:** To allow the required inbound services and protocols to be terminated on the services gateway, make sure you have selected the required services and protocols under **Services (Inbound)** and **Protocols (Inbound)**. Select **all** to permit all protocols and services.

- You can use the Configure J-Web Preferences page of the wizard to set the J-Web starting page options and J-Web commit options.

## Task 7: Apply the Basic Configuration

On the last page (Review and Commit) of the Juniper Setup Wizard-SRX Series, review the basic configuration, and click **Commit** to apply the configuration.

After you configure the basic settings, the setup wizard redirects you to the J-Web pages, where you can continue configuring the device.

After you complete the initial setup configuration, the setup wizard is no longer available. To make changes to the configuration, use the J-Web interface.

**NOTE:** For information about changing the interface configuration, see the *Getting Started Guide for the Branch SRX Series* at [http://www.juniper.net/techpubs/en\\_US/release-independent/junos/information-products/pathway-pages/srx-series/product/index.html](http://www.juniper.net/techpubs/en_US/release-independent/junos/information-products/pathway-pages/srx-series/product/index.html).

## Task 8: Verify the Configuration

Access <http://www.juniper.net> to ensure that you are connected to the Internet. This connectivity ensures that you can pass traffic through the services gateway.

**NOTE:** If the <http://www.juniper.net> page does not load, verify your configuration settings, and ensure that you have applied the configuration.

After you complete these steps, you can pass traffic from any trust port to the untrust port.

## Powering Off the Device

You can power off the device in one of the following ways:

- Graceful shutdown—Press and immediately release the Power button. The device begins gracefully shutting down the operating system. Press the Power button again to power on the device.
- Forced shutdown—Press the Power button, and hold it for 10 seconds. The device immediately shuts down. Press the Power button again to power on the device.

You can reboot or halt the system in the J-Web interface by selecting **Maintain > Reboot**.

**NOTE:** Use the graceful shutdown method to halt, power off, or reboot the services gateway. Use the forced shutdown method as a last resort and only if the services gateway operating system does not respond to the graceful shutdown method.

For additional information about configuration, see the *Getting Started Guide for the Branch SRX Series* at [http://www.juniper.net/techpubs/en\\_US/release-independent/junos/information-products/pathway-pages/srx-series/product/index.html](http://www.juniper.net/techpubs/en_US/release-independent/junos/information-products/pathway-pages/srx-series/product/index.html).

For detailed software configuration information, see the software documentation available at <http://www.juniper.net/techpubs/software/junos-srx/index.html>.

## Using the Reset Config Button

If a configuration fails or denies management access to the services gateway, you can use the Reset Config button to restore the device to the factory-default configuration or to a rescue configuration. For example, if someone inadvertently commits a configuration that denies management access to the services gateway, you can delete the invalid configuration and replace it with a rescue configuration by pressing the Reset Config button.

**NOTE:** The Reset Config button is recessed to prevent it from being pressed accidentally.

The rescue configuration is a previously committed, valid configuration. You must have previously set the rescue configuration through the J-Web interface or the CLI.

To press the Reset Config button, insert a small probe (such as a straightened paper clip) into the pinhole on the front panel.

- By default, pressing and quickly releasing the Reset Config button loads and commits the rescue configuration through the J-Web interface or the CLI. The STATUS LED is yellow and steadily on during this time.
- By default, pressing and holding the Reset Config button for 15 seconds or more—until the STATUS LED is yellow and steadily on—deletes all configurations on the device, including the backup configurations and rescue configuration, and loads and commits the factory-default configuration.

For details about managing and monitoring your device, see the *Junos OS Administration Guide* and the *Junos OS CLI Reference Guide*.

## Contacting Juniper Networks

For technical support, see <http://www.juniper.net/support/requesting-support.html>.