

Junos Multi-Access User Plane User Guide

Published
2023-03-13

Juniper Networks, Inc.
1133 Innovation Way
Sunnyvale, California 94089
USA
408-745-2000
www.juniper.net

Juniper Networks, the Juniper Networks logo, Juniper, and Junos are registered trademarks of Juniper Networks, Inc. in the United States and other countries. All other trademarks, service marks, registered marks, or registered service marks are the property of their respective owners.

Juniper Networks assumes no responsibility for any inaccuracies in this document. Juniper Networks reserves the right to change, modify, transfer, or otherwise revise this publication without notice.

Junos Multi-Access User Plane User Guide
Copyright © 2023 Juniper Networks, Inc. All rights reserved.

The information in this document is current as of the date on the title page.

YEAR 2000 NOTICE

Juniper Networks hardware and software products are Year 2000 compliant. Junos OS has no known time-related limitations through the year 2038. However, the NTP application is known to have some difficulty in the year 2036.

END USER LICENSE AGREEMENT

The Juniper Networks product that is the subject of this technical documentation consists of (or is intended for use with) Juniper Networks software. Use of such software is subject to the terms and conditions of the End User License Agreement ("EULA") posted at <https://support.juniper.net/support/eula/>. By downloading, installing or using such software, you agree to the terms and conditions of that EULA.

Table of Contents

About This Guide | vi

1

Understanding Junos Multi-Access User Plane

Junos Multi-Access User Plane Overview | 2

Introduction | 2

3GPP TS 29.244 Release 15 Support | 10

Hardware and Software Requirements | 11

CUPS Session Creation and Data Flow with Junos Multi-Access User Plane | 13

CUPS Session Creation | 13

CUPS Session Data Flow | 16

Charging and Usage Reports | 17

Handover between eNodeBs and no SGW or SAEGW Change | 18

Handover with SGW Change | 20

GRES on Junos Multi-Access User Plane | 22

Lawful Intercept on Junos Multi-Access User Plane | 29

Load and Overload Control on Junos Multi-Access User Plane | 35

QoS in Junos Multi-Access User Plane | 38

2

Configuring Junos Multi-Access User Plane

MX Series Router As Junos Multi-Access User Plane | 41

Overview | 41

Configuring Junos Multi-Access User Plane on an MX Router | 45

DDoS Attack Protection Configuration | 46

GRES Configuration | 46

Chassis Configuration for the Anchor PFE Line Cards | 47

Interface Configuration | 47

Mobile Edge Configuration | 49

Anchor PFEs and Redundancy in Junos Multi-Access User Plane | 51

Understanding the Anchor PFE | 51

Configuring No Redundancy for the Anchor PFEs | 51

Configuring 1:1 Hot-standby Redundancy for the Anchor PFEs | 52

Downlink Forwarding Queues and Forwarding Classes | 55

Example: Configuring an MX Router as an SAEGW-U | 56

Requirements | 57

Overview | 59

Configuration | 60

Verification | 67

Example: Configure GBR Forwarding on Junos Multi-Access User Plane | 71

Overview | 71

Requirements | 73

Configuration | 73

Verification | 78

Verify Forwarding Queue Configuration | 78

Verify GBR and Non-GBR Flows | 80

3

Configuration Statements

apn-services (control plane services) | 83

class-of-service (saegw system) | 84

destination (saegw system) | 86

downlink-dscp-to-forwarding-class | 88

downlink-dscp-to-egress-forwarding-class | 89

forwarding-packages | 91

mobility | 92

peer-groups (access network peers) | 94

peer-groups (control plane peers) | 96

peer-groups (core network peers) | 99

reserved-bandwidth | 101

saegw | 102

saegw access-network-peers | 104

saegw control-plane-peers | 107

saegw-core-network-peers | 110

saegw system | 112

service-mode | 114

4

Operational Commands

show services mobile-edge anchor class-of-service | 118

show services mobile-edge peers | 121

show services mobile-edge resources call-admission-control statistics | 126

show services mobile-edge sessions | 128

show services mobile-edge summary | 148

About This Guide

Use this guide to understand the Junos Multi-Access User Plane and how to configure an MX Series router as an SAEGW-U, SGW-U, PGW-U, and UPF to provide high-throughput 4G and 5G mobility and fixed wireless services.

1

CHAPTER

Understanding Junos Multi-Access User Plane

[Junos Multi-Access User Plane Overview | 2](#)

[CUPS Session Creation and Data Flow with Junos Multi-Access User Plane | 13](#)

[GRES on Junos Multi-Access User Plane | 22](#)

[Lawful Intercept on Junos Multi-Access User Plane | 29](#)

[Load and Overload Control on Junos Multi-Access User Plane | 35](#)

[QoS in Junos Multi-Access User Plane | 38](#)

Junos Multi-Access User Plane Overview

IN THIS SECTION

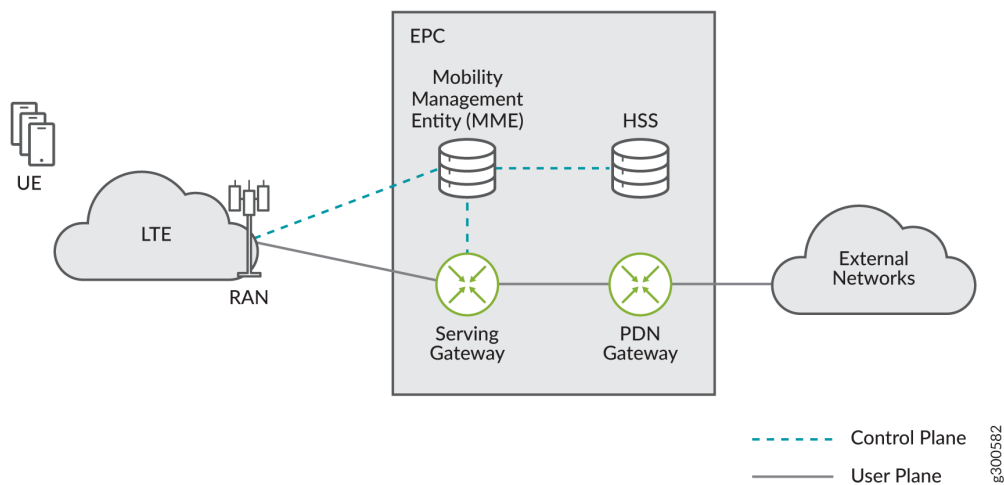
- Introduction | 2
- 3GPP TS 29.244 Release 15 Support | 10
- Hardware and Software Requirements | 11

Introduction

The 3rd Generation Partnership Project (3GPP) introduced the Evolved Packet Core (EPC) for core network architecture. As [Figure 1 on page 2](#) shows, the four main EPC network elements are:

- Serving Gateway
- Packet Data Network (PDN) Gateway
- Mobility Management Entity (MME)
- Home Subscriber Server (HSS)

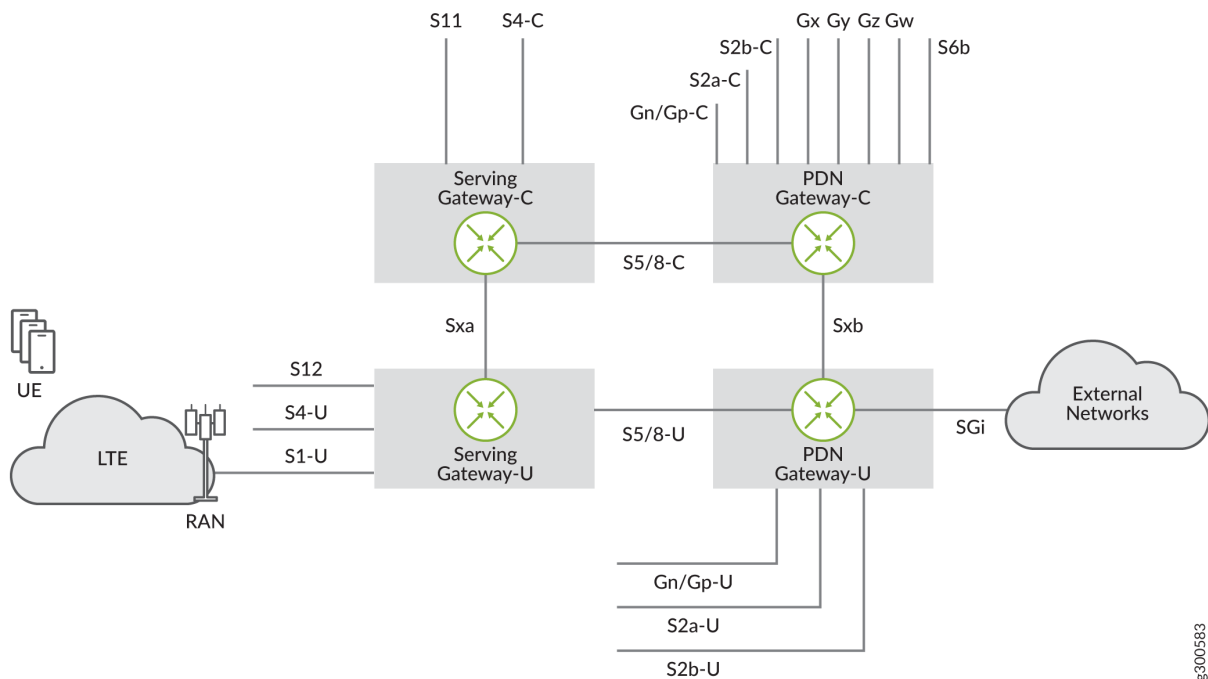
Figure 1: 3GPP Evolved Packet Core Architecture



User Equipment (UE) has control path connectivity and data path connectivity to the EPC network elements over eNodeB base stations. The EPC provides data connectivity to external networks such as the Internet.

3GPP TS 29.244 Release 14 introduced CUPS, which stands for Control and User Plane Separation. CUPS provides the architecture enhancements for the separation of functionality in the EPC's serving gateway (SGW) and PDN gateway (PGW). As [Figure 2 on page 3](#) shows, both the SGW and the PGW of the EPC can be separated into their control plane and user plane functions. CUPS introduces new interfaces, Sxa and Sxb, between the control plane and user plane functions of the SGW and PGW, respectively. CUPS enables control plane and user plane functions to be deployed, scaled and operated separately while integrated over a standard reference interface.

Figure 2: 3GPP Release 14 CUPS Architecture



The control plane provides the following functionality:

- Receives traffic rules and actions
- Triggers accounting
- Makes session level announcements
- Receives usage information
- Receives user plane status information

- Northbound integration with the signaling plane
- Configures and enables Lawful Intercept sessions

The user plane provides the following functionality:

- Subscriber tunnel encapsulations (GTP-U)
- Packet routing and forwarding
- QoS and buffering
- Policy enforcement
- Statistics gathering and reporting
- Enacts Lawful Intercept requests
- Optional advanced services

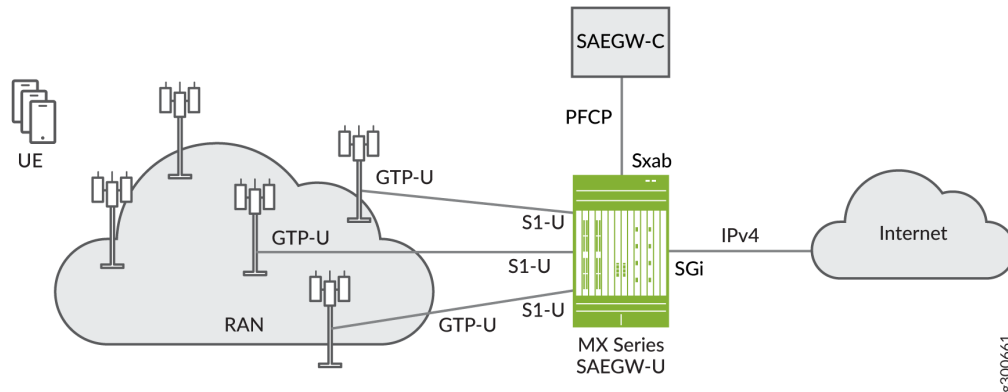
With this functional separation, the control plane and the user plane have very distinct deployment requirements and can be in different physical locations. While the control plane function is very complex, the user plane function requires high packet processing capability and rich policy enforcement. You can distribute the user plane more than the control plane and locate the user plane closer to end-user access points. This distribution enables higher bandwidth per user while delivering lower latency. Control plane and user plane separation provides the following benefits:

- Independent scaling of the user plane and the control plane
- Network architecture flexibility including:
 - Ability to deploy from the edge to the core.
 - Ability to segregate different traffic types and services across different user planes while maintaining a common or single control plane.
- Operational flexibility
- Easier migration path from 4G to 5G services. CUPS is optional for 4G, but is an integral part of the 5G network architecture.

Junos Multi-Access User Plane supports a combined SGW user plane (SGW-U) and PGW user plane (PGW-U) in a single MX series router (see [Figure 3 on page 5](#)). The combined SGW-U/PGW-U is referred to as a SAEGW-U (System Architecture Evolution Gateway-User Plane). Juniper's MX SAEGW-U can interoperate with a third-party combined SGW-C/PGW-C, referred to as a SAEGW-C, through a combined Sxab interface.

NOTE: Juniper's MX SAEGW-U communicates with the third-party SAEGW-C over the Sxab interface through Packet Forwarding Control Protocol (PFCP) as specified in 3GPP TS 29.244.

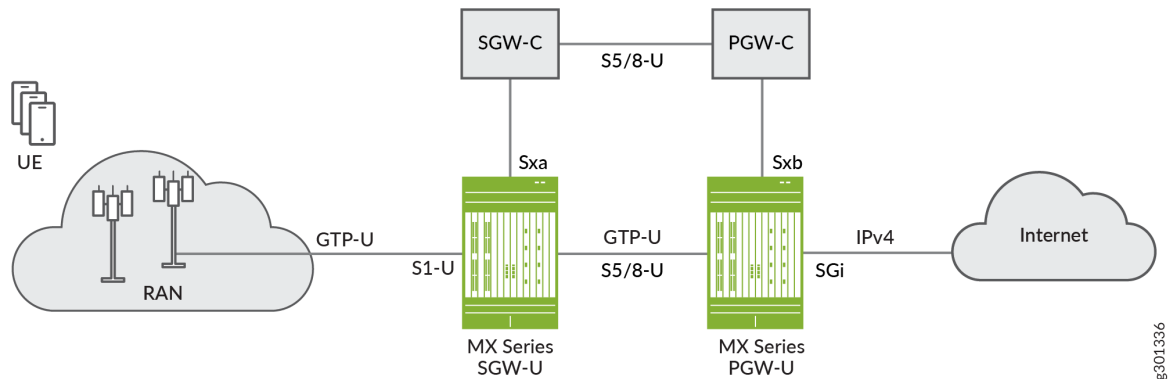
Figure 3: Junos Multi- Access User Plane SAEGW-U



Junos Multi-Access User Plane also supports running an MX router as either a standalone SGW-U or a standalone PGW-U. A standalone SGW-U enables high-throughput 4G **mobility service** (relocation of a UE to a new eNodeB, new SGW-U, or new SAEGW-U). Junos Multi-Access User Plane support GTP-U based S5-U and S8-U interfaces, which are links between SGW-U and PGW-U devices. Junos Multi-Access User Plane also provides tunnel relay functionality to forward user plane traffic between S1-U and S5-U/S8-U interfaces and between S5-U/S8-U and SGi interfaces.

[Figure 4 on page 6](#) shows the basic topology of running MX routers separately as and SGW-U and a PGW-U to enable mobility.

Figure 4: Junos Multi-Access User Plane SGW-U and PGW-U



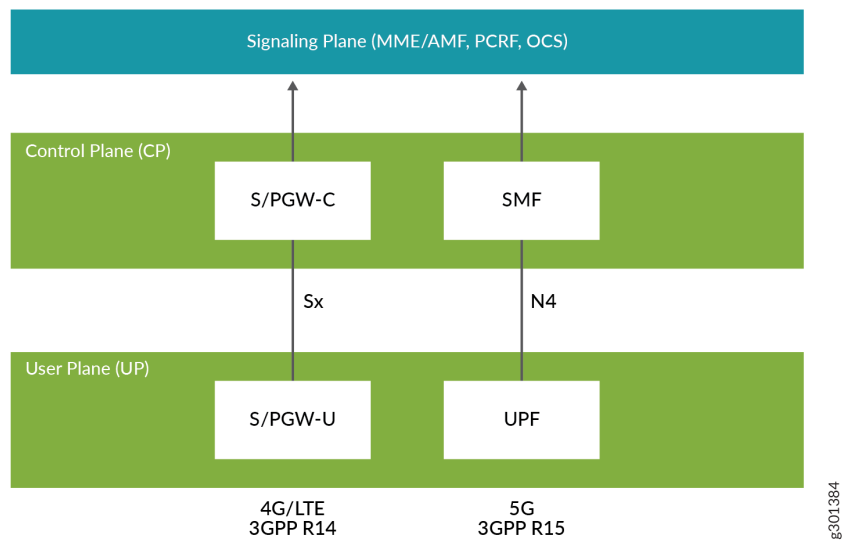
SGW-Cs and PGW-Cs handle logistics of UE handover, including SGW & PGW selection. The SGW-C and PGW-C participate in control protocol exchanges and update their SGW-U/PGW-U counterparts with any new or changed attributes of the UE session and bearers.

We support the following mobility scenarios:

- Handover with eNodeB and no SGW change
- Handover with SGW change (direct forwarding)
- Handover with SGW change (indirect forwarding)

Junos Multi-Access User Plane supports 5G user plane function (UPF) in addition to the SAEGW-U/SGW-U/PGW-U functions (see [Figure 5 on page 7](#)). Junos Multi-Access User Plane supports seamless transition from 4G to 5G services by supporting both networks on the same MX Series router with the same configuration. Junos Multi-Access User Plane supports 4G sessions and 5G sessions simultaneously.

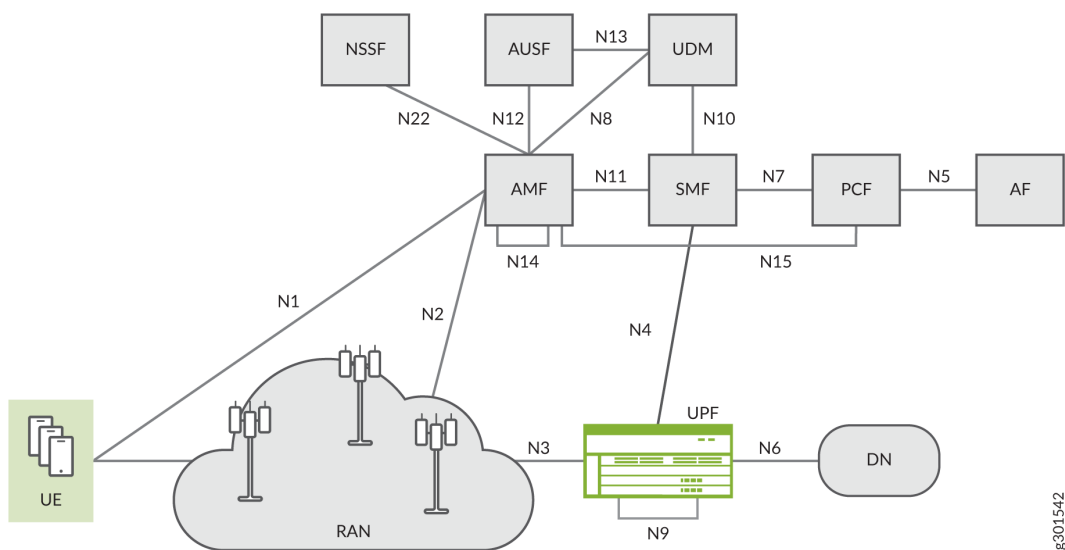
Figure 5: Support for both 4G/LTE and 5G User Plane Functionality



Junos Multi-Access User Plane supports MX routers functioning as user plane functions (UPFs) in accordance with 3GPP Release 15 CUPS architecture. The UPF provides high-throughput 5G fixed wireless and mobile wireless service in non-standalone (NSA) mode.

[Figure 6 on page 7](#) shows the basic topology of running an MX router as a UPF to enable 5G services.

Figure 6: Junos Multi-Access UPF in 5G CUPS Architecture



The 5G system architecture consists of the following network functions:

- Authentication Server Function (AUSF)
- Access and Mobility Management Function (AMF)
- Data Network (DN), e.g. operator services, Internet access or 3rd party services
- Network Slice Selection Function (NSSF)
- Policy Control Function (PCF)
- Session Management Function (SMF)
- Unified Data Management (UDM)
- User Plane Function (UPF)
- Application Function (AF)
- User Equipment (UE)
- (Radio) Access Network ((R)AN)

The session management function (SMF) includes the following functionality. A single instance of an SMF can support some or all of the SMF functionalities.

- Session management, e.g. session establishment, modify and release, including tunnel maintain between the UPF and a RAN node
- UE IP address allocation and management (including optional authorization)
- DHCPv4 (server and client) and DHCPv6 (server and client) functions
- Selection and control of the UPF
- Configure traffic steering at the UPF to route traffic to the proper destination
- Termination of interfaces towards policy control functions
- Charging data collection and support of charging interfaces
- Control and coordination of charging data collection at UPF
- Termination of SM parts of NAS messages
- Downlink data notification
- Initiator of RAN-specific SM information, sent via AMF over N2 to AN
- Determine SSC mode of a session

- Roaming functionality:
 - Handle local enforcement to apply QoS SLAs (VPLMN)
 - Charging data collection and charging interface (VPLMN)
 - Support for interaction with external DN for transport of signaling for PDU session authentication/authorization by external DN

The user plane function (UPF) includes the following functionality. A single instance of a UPF can support some or all of the UPF functionalities.

- Anchor point for Intra-/Inter-RAT mobility (when applicable)
- External PDU session point of interconnect to the data network
- Packet routing and forwarding
- Packet inspection
- User plane part of policy rule enforcement, e.g., gating, redirection, traffic steering)
- Traffic usage reporting
- QoS handling for user plane, e.g. uplink/downlink rate enforcement, reflective QoS marking in the downlink direction
- Uplink traffic verification (SDF to QoS Flow mapping)
- Transport level packet marking in the uplink and the downlink directions
- Downlink packet buffering and downlink data notification triggering
- Sending and forwarding of one or more end marker messages to the source RAN node

Junos Multi-Access User Plane acts as the UPF in the 5G CUPs architecture and includes support for the following:

- N3, N4, N6, and N9 interface support
- Roaming through the N9 interface
- GPRS tunneling protocol, user plane (GTP-U) tunneling to the control plane
- QoS Flow ID (QFI) support for 5G QoS flows

N3, N4, and N6 interfaces are similar to S1-U, Sx, and SGI interfaces in the 4G CUPs architecture, respectively. The N9 interface is similar to the S5/8-U interface. The N9 interface carries GTP-U encapsulated traffic and only connects from one UPF to another. In home-routed roaming scenarios, N9 reference points carry the user plane traffic back to an anchor UPF in the Home Public Land Mobile

Network (HPLMN). Junos Multi-Access User Plane supports either a single N9 reference point or a single N6 reference point per PDU session.

QoS in 4G networks is bearer-based where the mapping is one to one between a bearer and a radio bearer. QoS in 5G networks is flow-based where a QFI (QoS Flow Identifier) classifies and marks packets. Multiple QoS flows map to a radio bearer. Each QoS flow is associated with two parameters, a 5G QoS Identifier (5QI) and an allocation and retention priority (ARP).

In summary, starting with Junos OS Release 21.2R1, Junos Multi-Access User Plane supports four different modes of operation on a single MX router:

- **SGW-U**, where the MX router acts as an SGW-U for all sessions and connects to a third-party SGW-C over a single Sxa interface and Juniper or third party PGW-Us over multiple S5/8-U interfaces.
- **PGW-U**, where the MX router acts as a PGW-U for all sessions and connects to a third-party PGW-C over a single Sxb interface and Juniper or third-party SGW-Us over multiple S5/8-U interfaces.
- **Combined SGW/PGW-U (SAEGW-U)**, where depending on the UE location, the MX router acts as an SGW-U for some sessions, a PGW-U for another set of sessions and SAEGW-U for the remaining sessions. In this mode, the SAEGW-U connects to an SAEGW-C over a single Sxab interface and to other Juniper or third-party SGW-Us and PGW-Us over multiple S5/8-U interfaces.
- **UPF**, where the MX router acts as a UPF for all sessions and connects to a third-party SMF over a single N4 interface and to other Juniper or third-party UPFs over multiple N9 interfaces.

3GPP TS 29.244 Release 15 Support

Junos Multi-Access User Plane supports elements of 3GPP TS 29.244 Release 15, including support for the following functionality:

- **PDI Optimization Support**—Packet Detection Information (PDI) optimization is an optional feature that enables the control plane function (CPF) to optimize the signaling towards the UPF by combining the information that is common to multiple Packet Detection Rules (PDRs) as a Traffic Endpoint with a Traffic Endpoint ID (TEID) and then referring to this Traffic Endpoint in messaging. The Traffic Endpoint ID is unique within a PFCP session.
- **GTP Path Management**—GTP path management provides heartbeat and error indication over GTP-U interfaces. A GTP-U peer can send an echo request on a path to a GTP-U peer to find out if it is alive. Junos Multi-Access User Plane devices support responding to echo requests.
- **User ID Support**—The user ID is an information element (IE) that can be present in a PFCP Session Establishment Request. This IE is useful for troubleshooting problems in the UPF affecting a subscriber. The IE is visible in the output for the `show services mobile-edge sessions` extensive command. The user ID is an optional, noncritical IE that can be any length up to 16 digits or 8 characters.

- **Transport Level Marking**—For EPC, the SGW and PGW perform transport level marking on a per EPS bearer basis. Transport level marking is the process of marking traffic with a DSCP value based on the locally configured mapping from the QCI and optionally the ARP level. The CPF can change the transport level marking by changing the Transport Level Marking IE in the related Forwarding Action Rule (FAR).

NOTE: Juniper Multi-Access User Plane supports transport level marking per bearer for downlink data only.

Transport Level Marking—For 5GC (5G core), transport level marking occurs on a per QoS flow basis. Transport level marking is the process of marking traffic at the UPF with a DSCP value based on the mapping from the 5QI, the priority level (if explicitly signaled) and, optionally, the ARP priority level configured at the SMF.

- **DDOS Support**—DDOS support is provided for PFCP and GTP path management. To configure DDOS for these protocols, see [No Link Title](#).
- **QoS control/enforcement at the bearer level**—For QoS control/enforcement at the bearer level, the CPF must create the necessary PRDs to represent the service data flow, bearer, or session. The CPF must also create QERs for the QoS enforcement of the aggregate of the SDFs with the same bearer.

Junos Multi-Access User Plane supports QoS enforcement at either the service data flow (SDF) or the bearer level. If the MX router as UPF receives more than one QER for a bearer, it enforces QoS at the SDF level. If the MX router as UPF receives one QER for a bearer, it enforces QoS at the bearer level.

Hardware and Software Requirements

This section lists the MX Series hardware and software requirements needed to implement Junos Multi-Access User Plane.

[Table 1 on page 12](#) describes the hardware and software requirements for the Junos Multi-Access User Plane solution.

Table 1: Junos Multi-Access User Plane Platform Support

Junos OS Release	Supported Platforms	Line Cards Supporting Anchor PFE Interfaces	Line Cards Supporting Signaling, Ingress, and Egress Interfaces	Supported Routing Engines
Starting in Junos OS Release 19.4R1	<ul style="list-style-type: none"> MX240 MX480 MX960 	<ul style="list-style-type: none"> MPC7 	<ul style="list-style-type: none"> MPC2 MPC3 MPC4 MPC5 MPC7 	<ul style="list-style-type: none"> RE-S-1800X4-32G-S RE-S-X6-64G-S RE-S-X6-128G
Starting in Junos OS Release 20.2R1	<ul style="list-style-type: none"> MX204 MX10003 	<ul style="list-style-type: none"> MX10003-LC2103 	<ul style="list-style-type: none"> MX10003-LC2103 	
Starting in Junos OS Release 22.3R1	<ul style="list-style-type: none"> MX10004 	<ul style="list-style-type: none"> MX10004-LC2101 MX10004-LC480 	<ul style="list-style-type: none"> MX10004-LC2101 MX10004-LC480 	

NOTE: One MPC7 line card contains up to two anchor PFE interfaces.

NOTE: MX204 routers do not support GRES or APFE redundancy.

Release History Table

Release	Description
22.3R1	Starting with Junos OS Release 22.3R1, Junos Multi-Access User Plane supports MX10004 platforms using LC2101 and LC480 line cards.
21.3R1	Starting in Junos OS Release 21.3R1, Junos Multi-Access User Plane provides a long-route implementation as a replacement for a filter-based implementation to steer traffic to the anchor Packet Forwarding Engine removing the need for a firewall filter to route GTP packets.

21.2R1	Starting in Junos OS Release 21.2R1, Junos Multi-Access User Plane supports routers functioning as user plane functions (UPFs) in accordance with 3GPP Release 15 CUPS architecture.
20.4R1	Starting with Junos OS Release 20.4R1, Junos Multi-Access User Plane supports running an MX router as either a standalone SGW-U or a standalone PGW-U.
20.4R1	Starting with Junos OS Release 20.4R1, Junos Multi-Access User Plane supports elements of 3GPP TS 29.244 Release 15.

CUPS Session Creation and Data Flow with Junos Multi-Access User Plane

IN THIS SECTION

- [CUPS Session Creation | 13](#)
- [CUPS Session Data Flow | 16](#)
- [Charging and Usage Reports | 17](#)
- [Handover between eNodeBs and no SGW or SAEGW Change | 18](#)
- [Handover with SGW Change | 20](#)

With the introduction of CUPS, it's useful to illustrate how an end-user session is created, how data flows during the session, and how the session is terminated with Junos Multi-Access User Plane.

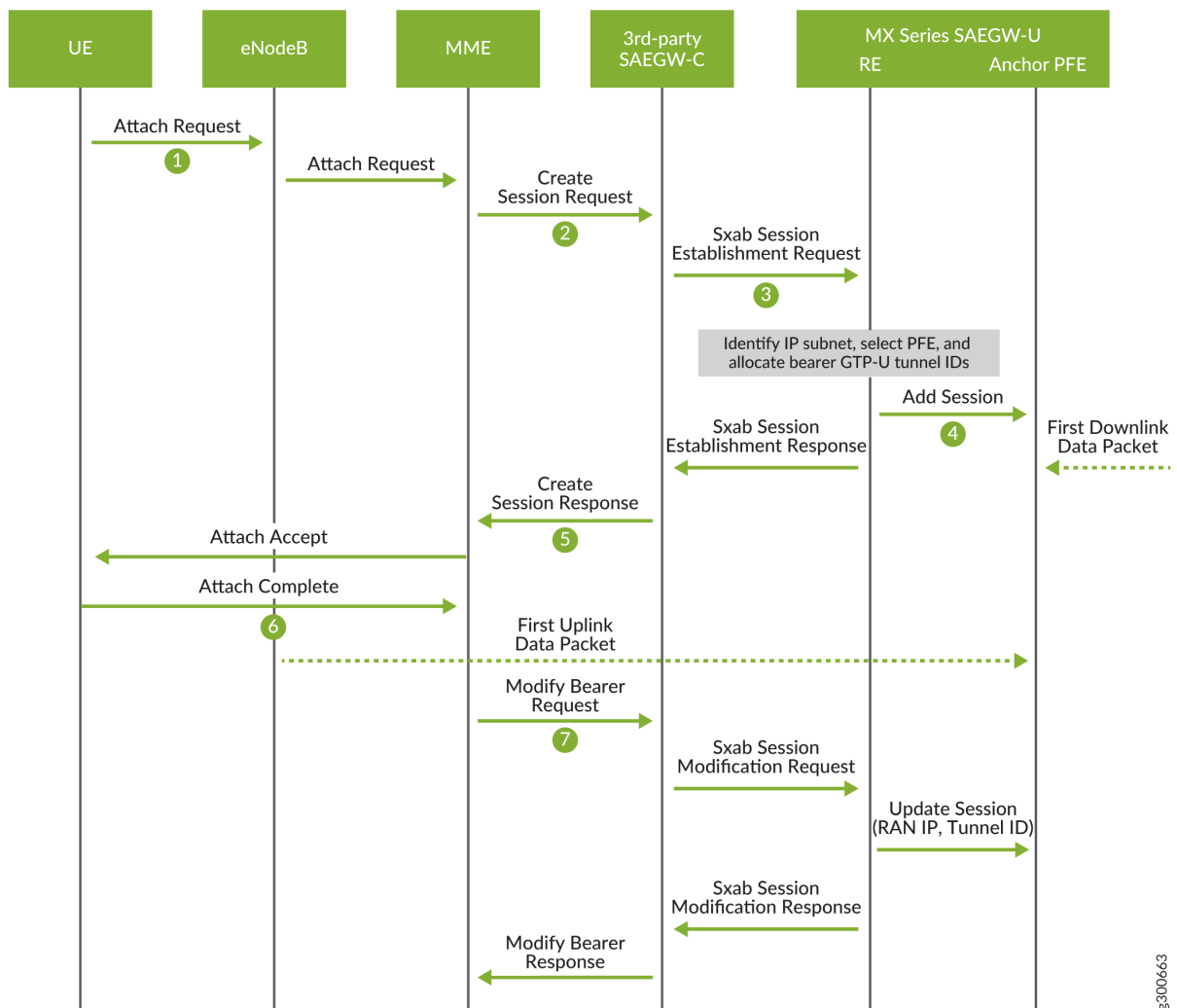
CUPS Session Creation

NOTE: Before a CUPS session can be created, the control plane function (SAEGW-C, SGW-C, PGW-C) must create an Sx association with the user plane function (SAEGW-U, SGW-U, PGW-U). The control plane sends an Sx Association Setup Request message and the user plane

responds with an Sx Association Setup Response message to create the association. Once this is done, the control plane can create Sx sessions on the user plane.

When an end user wants to access the network, a CUPS session must be created. [Figure 7 on page 14](#) illustrates this process once an Sx association is established between an SAEGW-C and an SAEGW-U.

Figure 7: CUPS Session Creation for SAEGW-C and SAEGW-U



1. The user equipment (UE) sends an Attach Request to the eNodeB, which forwards the message to the mobility management entity (MME). The request includes the APN.
2. The MME sends a Create Session Request to the SAEGW-C.

3. The SAEGW-C performs the following actions:

- Validates information elements received in the request.
- Validates the APN requested by the subscriber.
- Sends a Sxab Session Establishment Request to the routing engine (RE) of the MX SAEGW-U.

NOTE: Sx session establishment is the SAEGW-C messaging the SAEGW-U control parameters on how to behave when the SAEGW-U encounters certain traffic. The minimum control parameters for Sx session establishment are one packet detection rule (PDR) and one forwarding action rule (FAR) The Sx session establishment effectively logs in the subscriber.

4. The RE of the SAEGW-U performs the following actions:

- Identifies the IP address for the session.
- Selects and anchor PFE to use for the session.
- Allocates the bearer GTP-U tunnel IDs.
- Adds the session to the anchor PFE.
- Sends a Sxab Session Establishment Response back to the SAEGW-C.

5. The SAEGW-C sends a Create Session Response back to the MME.

6. The MME sends an Attach Accept message to the UE, which responds with an Attach Complete message.

7. The MME sends a Modify Bearer request to the SAEGW-C, which sends an Sxab Session Modification Request to the RE on the SAEGW-U. The RE updates the session IP address and tunnel ID of the eNodeB. Finally, a Modify Bearer Response is routed back to the MME.

NOTE: Sx Session Modification Request is the SAEGW-C messaging the SAEGW-U to modify any of the following four rules:

- Packet Detection Rule (PDR): contains information describing which packets should receive which treatment (for example, forwarding and other types of enforcement)
- Forwarding Action Rule (FAR): contains information on whether forwarding, dropping, or buffering is applied to a packet
- Usage Reporting Rule (URR): contains information that defines a certain measurement to make on user traffic and how that measurement shall be reported

- Quality Enforcement Rule (QER): contains information related to QoS enforcement of traffic

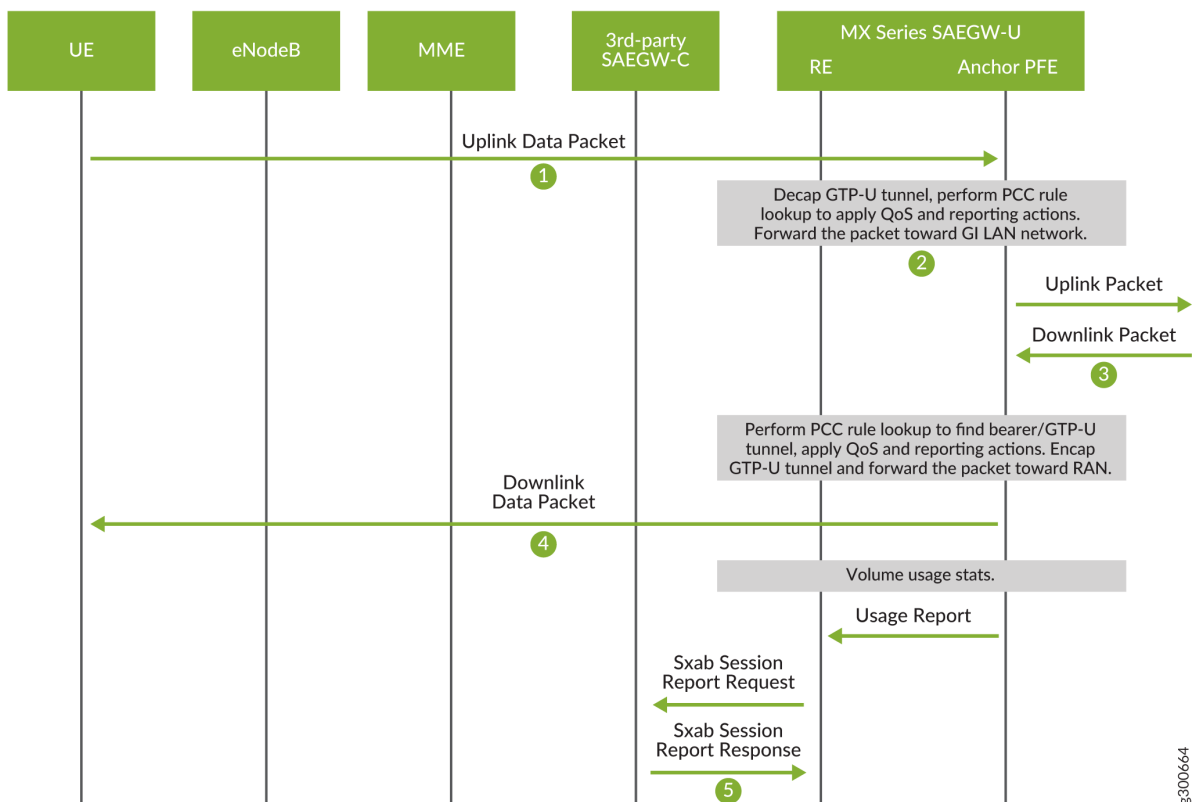
Junos Multi-Access User Plane does not support Buffering Action Rules (BARs).

- The default bearer is now active and subscriber data traffic can pass back and forth between the UE through the eNodeB to the SAEGW-U and then the core network.

CUPS Session Data Flow

Once the session is established, the SAEGW-C is no longer directly involved for data flow. Data flows directly back and forth from the UE through the eNodeB to the SAEGW-U and then the core network. See [Figure 8 on page 16](#).

Figure 8: CUPS Session Data Flow



1. The UE sends data to the eNodeB, which encodes the data as a GTP-U packet and forwards that packet to the anchor PFE on the SAEGW-U by way of the S1-U interface.
2. The anchor PFE of the SAEGW-U performs the following actions:
 - Decapsulates the GTP-U packet.
 - Performs PCC rule lookup to apply QoS and reporting actions.
 - Forwards the decapsulated IPv4 packet to the core network over the SGi interface.
3. The SAEGW-U receives a downlink IPv4 packet from the core network.
4. The anchor PFE performs the following actions:
 - Performs PCC rule lookup to determine the bearer GTP-U tunnel.
 - Applies QoS and reporting actions.
 - Encapsulates the IPv4 packet in GTP-U.
 - Forwards the GTP-U packet to the eNodeB, which decapsulates the packet and forwards the data to the UE.
5. The SAEGW-U also creates a usage report for the session and sends the report to the SAEGW-C over the Sx interface.

Charging and Usage Reports

Junos Multi Access User Plane supports charging and usage reports according to 3GPP TS 23.203, Policy and charging control architecture. Junos Multi Access User Plane supports the following usage reports:

- Volume threshold only
- Volume quota only
- Volume threshold and volume quota

Junos Multi Access User Plane uses the following process to generate usage reports:

1. The SAEGW-U creates a rating group for each bearer (default or dedicated). Rating groups can be created per session data flow (SDF) or for an entire bearer consisting of many SDFs.
2. The SAEGW-C associates a Usage Reporting Rule (URR) ID with a PDR and sends the URR ID over the Sx interface.
3. The SAEGW-U associates the URR ID with a rating group.
4. The SAEGW-C also messages what type of report needs to be generated for the URR ID (volume threshold only, volume quota only, volume threshold and quota).

5. The default action when the volume quota is reached is to drop all traffic for the session data flow.
6. When the subscriber session ends, the SAEGW-U generates and sends a final usage report to the SAEGW-C.

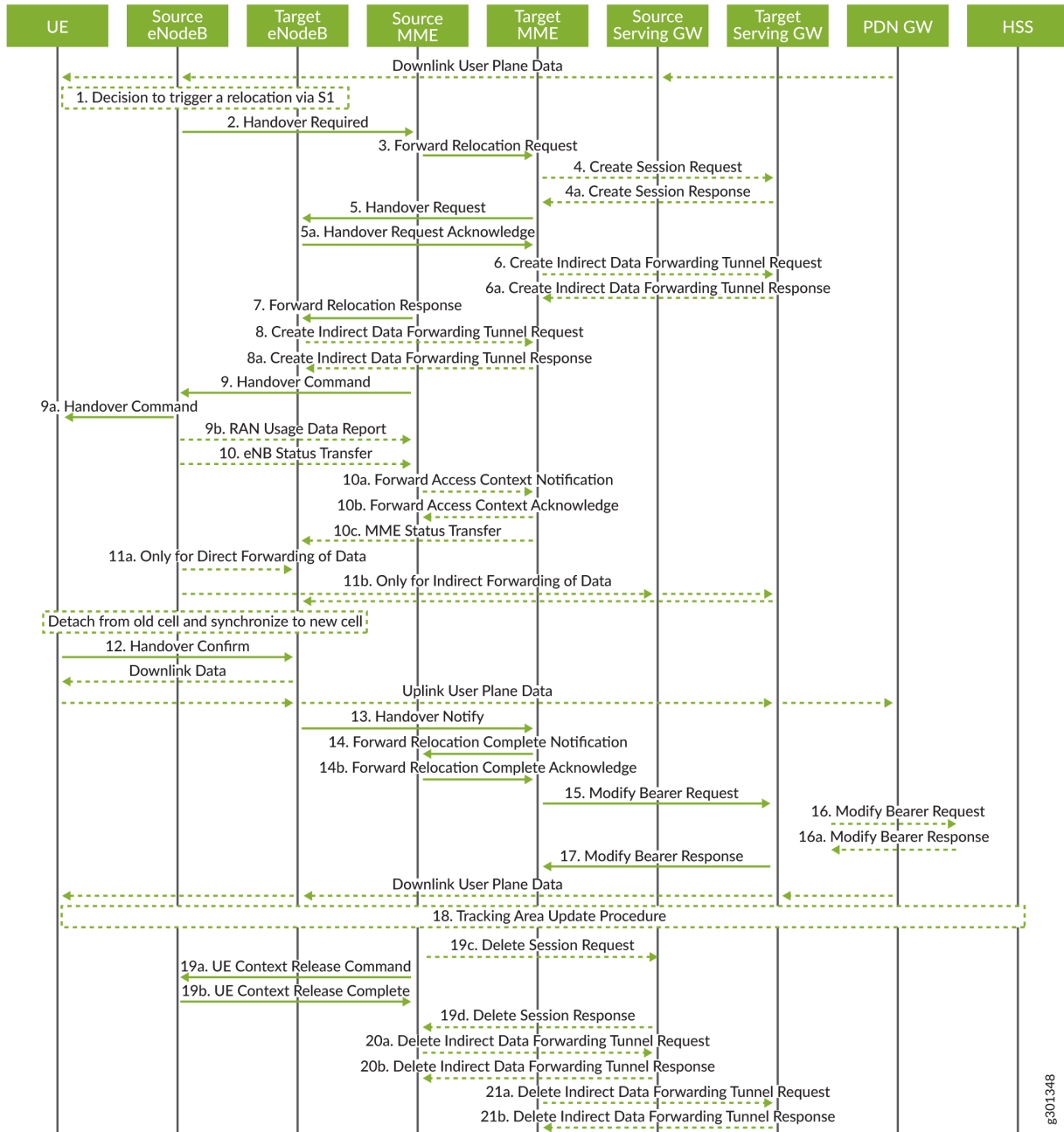
NOTE: The SAEGW-U supports pausing charging measurements for any URR ID where the SAEGW-C sets the Inactive Measurement flag of the Measurement Information IE of the URR. The SAEGW-U also supports sending immediate reports to the SAEGW-C on a URR query or remove request from the SAEGW-C; the SAEGW-U sends the usage report in the Modify Response.

Handover between eNodeBs and no SGW or SAEGW Change

Starting with Junos OS 20.4R1, Junos Multi Access User Plane supports UE mobility.

[Figure 9 on page 19](#) shows the entire handover process when a UE switches from one eNodeB to another without requiring a SGW or SAEGW change (i.e., both eNodeBs are served by the same SGW). This is the simplest version of mobility handover.

Figure 9: Handover between eNodeBs



The following steps describe just the interactions between the control plane and user plane functions of the SGW and PGW (steps 15-17 in [Figure 9 on page 19](#)).

Step 15: Target MME to Target SGW Modify Bearer Request

1. SGW-C sends Sx Session Modification Request to MX SGW-U. The message includes F-TEIDu(s) corresponding to the new eNodeB. It may also instruct MX SGW-U to send “end marker” message towards the new eNodeB.

2. If requested to do so, MX SGW-U sends “end marker” message on S1-U interface towards the old eNodeB for all bearers referred to by Sx Session Modification Message.
3. MX SGW-U updates downlink peer F-TEID in the bearer(s) to F-TEIDu(s) received in the Sx Session Modification Request.
4. MX SGW-U sends Sx Session Modification Response to SGW-C

Step 16: Target SGW to PGW Modify Bearer Request

NOTE: This step doesn't affect any F-TEIDu assignments on any of the bearers. It may however update other forwarding & charging parameters based on the new location of the UE.

1. PGW-C sends Sx Session Modification Request to MX PGW-U.
2. MX PGW-U updates corresponding bearers and sends Sx Session Modification Response to PGW-C.

Handover with SGW Change

Considering the CUPS model, there are two types of procedures involving SGW change:

- **Type 1:** Only Create Session Request message is sent from MME/SGSN to SGW-C during SGW change.
- **Type 2:** Create Session Request message followed by Modify Bearer Request message is sent from MME/SGSN to SGW-C during SGW change.

For the MX SGW-U, the main difference between these two types is that in the first, the new SGW-C is provided with both eNodeB and PGW F-TEIDu(s) within Create Session Request, while in the second, the eNodeB's F-TEIDu(s) are provided in the Modify Bearer Request, which translates to one extra Sx Session Modify Request/Response exchange between SGW-C and SGW-U. Because Type 1 can be considered a subset of Type 2, we present here the process for Type 2 handover.

[Figure 9 on page 19](#) shows the entire handover process when a UE switches from one eNodeB to another with requiring a SGW change. The following steps describe just the interactions between the control plane and user plane functions of the SGW and PGW (steps 4,4a, 15-17 and 19 in [Figure 9 on page 19](#)).

Step 4: Target MME to Target SGW Create Session Request

1. The target SGW-C sends Sx Session Establishment Request to the target MX SGW-U. If PGW-U is a different physical node than the target SGW-U, the message includes F-TEIDu(s) of the PGW-U for every bearer of the session. It does not include local F-TEIDu(s) since MX SGW-U only supports UP function allocated local F-TEIDu.

2. The target MX SGW-U creates a new session and allocates local F-TEIDu(s) for all bearers indicated in Sx Session Establishment Request. If the message included PGW-U's F-TEIDs, we use them to set uplink peer F-TEIDu(s) for all referenced bearers.
3. The target MX SGW-U sends Sx Session Establishment Response message to the target SGW-C.

Step 15: Target MME to Target SGW Modify Bearer Request

1. The target SGW-C sends Sx Session Modification Request to the target MX SGW-U. The message includes F-TEIDu(s) for all bearers corresponding to the new eNodeB.
2. The target MX SGW-U updates downlink peer F-TEID in the bearer(s) to F-TEIDu(s) received in the Sx Session Modification Request.
3. MX SGW-U sends Sx Session Modification Response to SGW-C.

Step 16: Target SGW to PGW Modify Bearer Request

1. PGW-C sends Sx Session Modification Request to MX PGW-U. The message includes F-TEIDu(s) of the target SGW-U for all bearers. It may also instruct MX PGW-U to send "end marker" message.
2. If instructed to do so, MX PGW-U sends "end marker" message towards old SGW-U.
3. MX PGW-U updates downlink peer F-TEID for all the referenced bearers to F-TEIDu(s) received in the Sx Modification Request Message
4. MX PGW-U sends Sx Session Modification Response to the target SGW-C.

Step 19: Source MME to Source SGW Delete Session Request

1. Source SGW-C sends Sx Session Delete Request to the source MX SGW-U.
2. Source MX SGW-U deletes all bearers and the session.
3. Source MX SGW-U sends Sx Session Delete Response to the source SGW-C.

Release History Table

Release	Description
20.4R1	Starting with Junos OS 20.4R1, Junos Multi Access User Plane supports UE mobility.

GRES on Junos Multi-Access User Plane

Graceful Routing Engine switchover (GRES) in Junos OS enables a router with redundant Routing Engines to continue forwarding packets even if one Routing Engine fails. GRES preserves interface and kernel information. Traffic is not interrupted.

NOTE: MX204 routers do not support GRES.

To preserve routing during a switchover, GRES must be combined with either:

- Graceful restart protocol extensions
- *Nonstop active routing* (NSR)

For Junos Multi-Access User Plane, GRES switchover protects the PFCP KeepAlive protocol. The new primary Routing Engine starts answering peer keepalives.

Any updates to the primary Routing Engine are replicated to the backup Routing Engine as soon as they occur.

Primary Role switches to the backup Routing Engine if:

- The primary Routing Engine kernel stops operating.
- The primary Routing Engine experiences a hardware failure.
- The administrator initiates a manual switchover.

NOTE: To quickly restore or to preserve routing protocol state information during a switchover, GRES must be combined with either graceful restart or nonstop active routing, respectively. For more information about graceful restart, see [Graceful Restart Concepts](#). For more information about nonstop active routing, see [Nonstop Active Routing Concepts](#).

If the backup Routing Engine does not receive a keepalive from the primary Routing Engine after 2 seconds, it determines that the primary Routing Engine has failed; and assumes primary role.

The Packet Forwarding Engine:

- Seamlessly disconnects from the old primary Routing Engine
- Reconnects to the new primary Routing Engine
- Does not reboot

- Does not interrupt traffic

The new primary Routing Engine and the Packet Forwarding Engine then become synchronized. If the new primary Routing Engine detects that the Packet Forwarding Engine state is not up to date, it resends state update messages.

NOTE: Successive Routing Engine switchover events must be a minimum of 240 seconds (4 minutes) apart after both Routing Engines have come up.

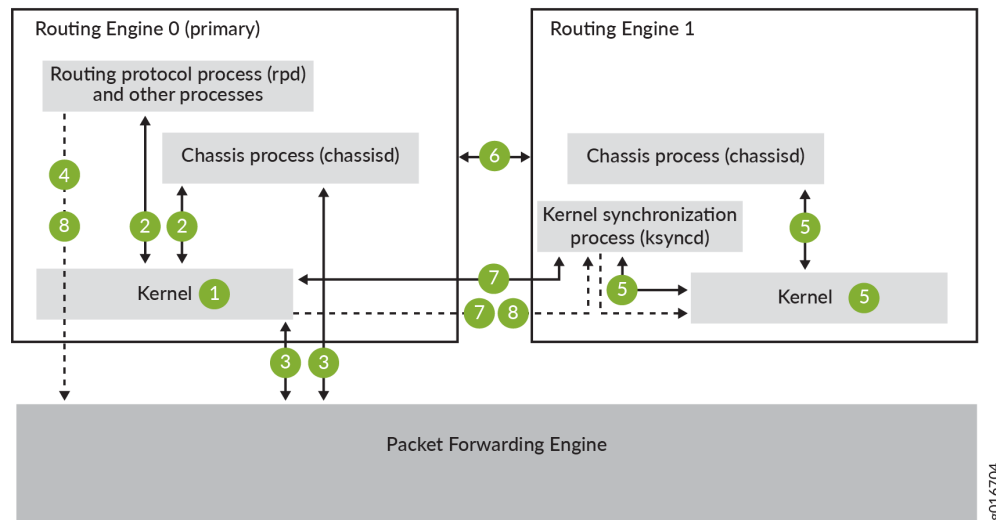
If the router or switch displays a warning message similar to Standby Routing Engine is not ready for graceful switchover. Packet Forwarding Engines that are not ready for graceful switchover might be reset, do not attempt switchover. If you choose to proceed with switchover, only the Packet Forwarding Engines that were not ready for graceful switchover are reset. None of the FPCs should spontaneously restart. We recommend that you wait until the warning no longer appears and then proceed with the switchover.

NOTE:

- We do *not* recommend performing a commit operation on the backup Routing Engine when GRES is enabled on the router or switch.
- We do *not* recommend enabling GRES on the backup Routing Engine in *any* scenario.

Figure 10 on page 24 shows the system architecture of graceful Routing Engine switchover and the process a routing platform follows to prepare for a switchover.

Figure 10: Preparing for a Graceful Routing Engine Switchover



NOTE: Check GRES readiness by executing both:

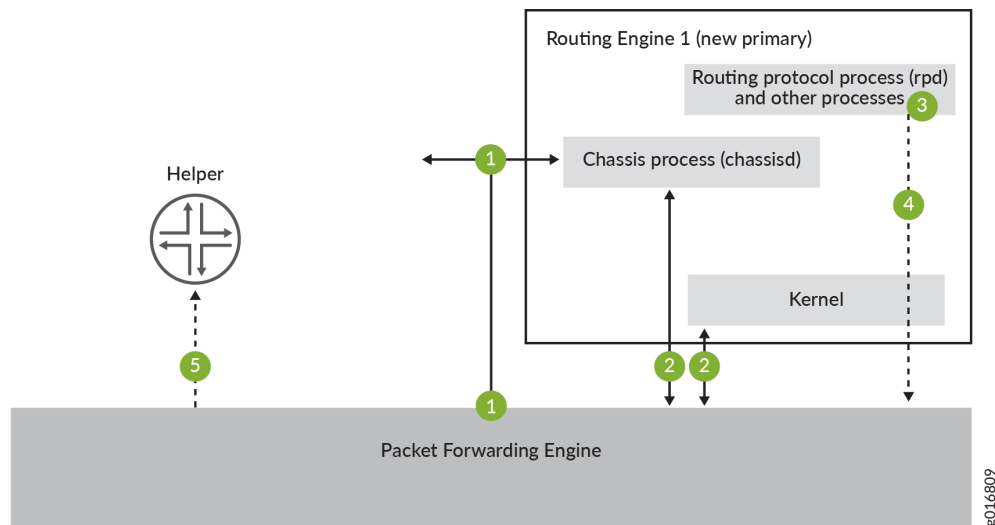
- The request chassis routing-engine master switch check command from the primary Routing Engine
- The show system switchover command from the Backup Routing Engine

The switchover preparation process for GRES is as follows:

1. The primary Routing Engine starts.
2. The routing platform processes (such as the chassis process [chassisd]) start.
3. The Packet Forwarding Engine starts and connects to the primary Routing Engine.
4. All state information is updated in the system.
5. The backup Routing Engine starts.
6. The system determines whether GRES has been enabled.
7. The kernel synchronization process (ksyncd) synchronizes the backup Routing Engine with the primary Routing Engine.
8. After ksyncd completes the synchronization, all state information and the forwarding table are updated.

Figure 11 on page 25 shows the effects of a switchover on the routing (or switching)platform.

Figure 11: Graceful Routing Engine Switchover Process



A switchover process consists of the following steps:

1. When keepalives from the primary Routing Engine are lost, the system switches over gracefully to the backup Routing Engine.
2. The Packet Forwarding Engine connects to the backup Routing Engine, which becomes the new primary.
3. Routing platform processes that are not part of GRES (such as the routing protocol process rpd) restart.
4. State information learned from the point of the switchover is updated in the system.
5. If configured, graceful restart protocol extensions collect and restore routing information from neighboring peer *helper* routers.

NOTE: For MX Series routers using enhanced subscriber management, the new backup Routing Engine (the former primary Routing Engine) will reboot when a graceful Routing Engine switchover is performed. This cold restart resynchronizes the backup Routing Engine state with that of the new primary Routing Engine, preventing discrepancies in state that might have occurred during the switchover.

NOTE: In Junos Multi-Access User Plane configuration, if the mobile-edge configuration is committed and then GRES needs to be enabled or disabled, a reboot of the entire chassis is required.

NOTE: In Junos Multi-Access User Plane, any subscriber session whose Session State is *not* ESTABLISHED, a graceful restart logs out that subscriber and cleans up any state. The SAEGW-C will need to reestablish this session

Table 2: Effects of a Routing Engine Switchover

Feature	Benefits	Considerations
Dual Routing Engines only (no features enabled)	<ul style="list-style-type: none"> When the switchover to the new primary Routing Engine is complete, routing convergence takes place and traffic is resumed. 	<ul style="list-style-type: none"> All physical interfaces are taken offline. Packet Forwarding Engines restart. The backup Routing Engine restarts the routing protocol process (rpd). All hardware and interfaces are discovered by the new primary Routing Engine. The switchover takes several minutes. All of the router's adjacencies are aware of the physical (interface alarms) and routing (topology) changes.

Table 2: Effects of a Routing Engine Switchover (*Continued*)

Feature	Benefits	Considerations
GRES enabled	<ul style="list-style-type: none"> • During the switchover, interface, mobile-edge subscriber information, and kernel information is preserved. • The switchover is faster because the Packet Forwarding Engines are not restarted. 	<ul style="list-style-type: none"> • The new primary Routing Engine restarts the routing protocol process (rpd). • All hardware and interfaces are acquired by a process that is similar to a warm restart. • All adjacencies are aware of the router's change in state. • Mobile-edge PFCP peer is not aware that GRES happened.
GRES <i>and</i> NSR enabled	<ul style="list-style-type: none"> • Traffic is not interrupted during the switchover. • Interface, mobile-edge subscriber information, and kernel information are preserved. 	<ul style="list-style-type: none"> • Unsupported protocols must be refreshed using the normal recovery mechanisms inherent in each protocol. • Mobile-edge PFCP peer is not aware that GRES happened.

Table 2: Effects of a Routing Engine Switchover (*Continued*)

Feature	Benefits	Considerations
GRES and graceful restart enabled	<ul style="list-style-type: none"> Traffic is not interrupted during the switchover. Interface, mobile-edge subscriber information, and kernel information are preserved. Graceful restart protocol extensions quickly collect and restore routing information from the neighboring routers. 	<ul style="list-style-type: none"> Neighbors are required to support graceful restart, and a wait interval is required. The routing protocol process (rpd) restarts. For certain protocols, a significant change in the network can cause graceful restart to stop. Starting with Junos OS Release 12.2, if adjacencies between the restarting router and the neighboring peer 'helper' routers time out, graceful restart can stop and cause interruptions in traffic. Mobile-edge PFCP peer is not aware that GRES happened.

Release History Table

Release	Description
12.2	Starting with Junos OS Release 12.2, if adjacencies between the restarting router and the neighboring peer 'helper' routers time out, graceful restart can stop and cause interruptions in traffic.

RELATED DOCUMENTATION

[Understanding Graceful Routing Engine Switchover](#)
[Configuring Graceful Routing Engine Switchover](#)

Lawful Intercept on Junos Multi-Access User Plane

IN THIS SECTION

- [Lawful Intercept on 4G Networks | 29](#)
- [Lawful Intercept on 5G Networks | 30](#)
- [Requirements for Lawful Intercept | 31](#)
- [Security Considerations for Lawful Intercept | 33](#)

Lawful intercept is a process for obtaining communications network data related to a target individual or organization, as authorized by a judicial or administrative order.

Junos Multi-Access User Plane supports 4G and 5G compliance for lawful interception. You can lawfully intercept up to two percent of the maximum subscribers that the platform supports.

Lawful intercept on the Junos Multi-Access User Plane supports graceful Routing Engine switchover (GRES). It does not currently support unified ISSU.

Lawful Intercept on 4G Networks

The Junos Multi-Access User Plane supports 4G-compliant lawful intercept only over the System Architecture Evolution Gateway-User Plane (SAEGW-U).

[Figure 12 on page 30](#) shows the entities involved in lawful interception on 4G networks and the interfaces between them.

Figure 12: Lawful intercept on 4G networks



The process for lawful interception on 4G networks is as follows:

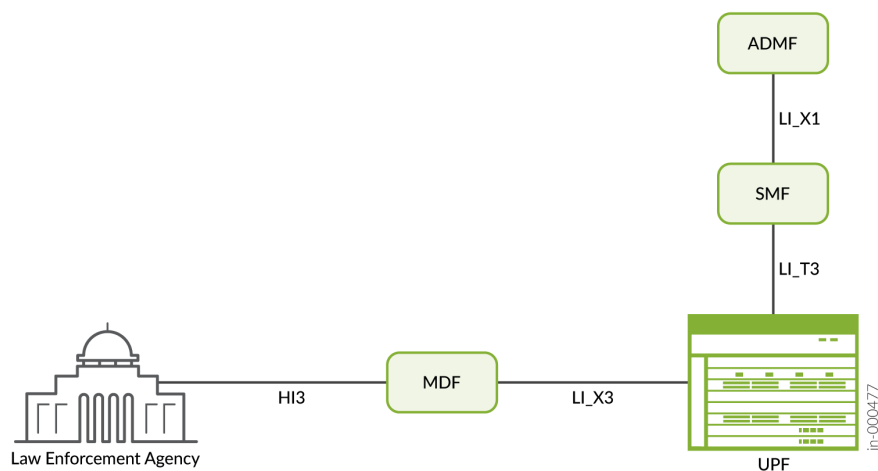
1. The Administrative Function (ADMF) performs the overall management of the lawful intercept system. It sends signals containing targeting information to the control plane over the X1 interface. The ADMF also informs the control plane which subscribers' traffic to duplicate and to send to the law enforcement agency.
2. The control plane (SAEGW-C) triggers the user plane over the Sx interface to start duplicating the subscriber traffic. It also sends the address of the Mediation and Delivery Function (MDF) to which the data is to be forwarded.
3. The Junos Multi-Access User Plane (SAEGW-U) sends the duplicated traffic to the split X3 lawful intercept internetworking function (SX3LIF) over the X3u interface. The SX3LIF then forwards it to the MDF over the X3 interface.
4. The MDF derives the intercept-related information from the LI_X3 headers sent along with the duplicated traffic. It then forwards the intercepted traffic to the law enforcement agency over the HI3 interface.

Lawful Intercept on 5G Networks

The Junos Multi-Access User Plane supports 5G-compliant lawful intercept only over the user plane function (UPF) or content of communication point of interception (CC-POI).

Figure 13 on page 31 shows the entities involved in lawful interception on 5G networks and the interfaces between them.

Figure 13: Lawful intercept on 5G networks



The process for lawful interception is as follows:

1. The Administrative Function (ADMF) performs the overall management of the lawful intercept system. It sends signals containing targeting information to the control plane over the LI_X1 interface. It also informs the control plane which subscribers' traffic to duplicate and to send to the law enforcement agency.
2. The control plane (SMF) triggers the user plane over the LI_T3 interface to start duplicating the subscriber traffic. It also sends the address of the Mediation and Delivery Function (MDF) to which the data is to be forwarded.
3. The Junos Multi-Access User Plane (UPF) sends the duplicated traffic to the MDF over the LI_X3 interface.
4. The MDF derives the intercept-related information from the LI_X3 headers sent along with the duplicated traffic. It then forwards the intercepted traffic to the law enforcement agency over the HI3 interface.

Requirements for Lawful Intercept

To configure lawful intercept for 4G networks, you must:

- Configure a loopback address on the Junos Multi-Access User Plane. This address is used as the source address for the lawfully intercepted traffic.

```
[edit interfaces lo0 unit 0 family inet]
user@host# set address loopback-address
```

- Configure the destination address of the IPsec peer on the Junos Multi-Access User Plane under the [edit services mobile-edge gateways saegw system destination] hierarchy.

```
[edit services mobile-edge gateways saegw system destination]
user@host# set routing-instance instance-name
```

To configure lawful intercept for 5G networks, you must:

- Set the loopback address to 127.0.0.1/32 on the Junos Multi-Access User Plane. This address is used as the source address for the lawfully intercepted traffic.

```
[edit interfaces lo0 unit 0 family inet]
user@host# set address 127.0.0.1/32
```

- Configure the destination address of the IPsec peer on the Junos Multi-Access User Plane under the [edit services mobile-edge gateways saegw system destination] hierarchy.

```
[edit services mobile-edge gateways saegw system destination]
user@host# set routing-instance instance-name
```

- Configure the HTTPS server on the Junos Multi-Access User Plane using the REST-API under the [edit system services rest https-5g] hierarchy.

```
[edit system services rest https-5g]
user@host# set port port-number
user@host# set addresses ip-address
user@host# set server-certificate local-certificate-identifier
user@host# set mutual-authentication certificate-authority certificate-authority-profile-name
```

For more information on the REST API, see *Configuring the REST API*.

For information on certificate authority and public key infrastructure, see *PKI in Junos OS*.

- (Optional) Configure the connection limit for the REST-API. We recommend this configuration to enhance the performance of lawful intercept.

```
[edit system services rest control]
user@host# set connection-limit limit
```

Security Considerations for Lawful Intercept

Due to its nature, lawfully intercepted data must be transmitted in a secure manner. The 3GPP standards require that lawful intercept traffic on 5G networks must be sent to the Mediation and Delivery Function (MDF) using Transport Layer Security (TLS).

The Junos Multi-Access User Plane does not support TLS, but can send lawful intercept traffic to the MDF over IPsec tunnels. When using IPsec on the Junos Multi-Access User Plane, make sure that you:

- Configure the virtual multiservices interfaces and the next-hop-style service set.

Use the following commands to configure the virtual multiservices interfaces:

```
[edit interfaces]
user@host# set interface-name unit logical-unit-number family inet
user@host# set interface-name unit logical-unit-number service-domain inside
user@host# set interface-name unit logical-unit-number family inet
user@host# set interface-name unit logical-unit-number service-domain outside
```

Use the following commands to configure a next-hop-style service set:

```
[edit services]
user@host# set service-set service-set-name
[edit services service-set service-set-name]
user@host# set next-hop-service inside-service-interface interface-name.unit-number outside-
service-interface interface-name.unit-number
```

The inside-service-interface must be a service interface logical unit that is configured with service-domain inside. The outside-service-interface must be a service interface logical unit that is configured with service-domain outside.

- Configure the Internet Key Exchange (IKE).

```
[edit security ike]
user@host# set proposal proposal-name
[edit security ike proposal proposal-name]
user@host# set authentication-method pre-shared-keys
user@host# set dh-group dh-group-number
user@host# set authentication-algorithm algorithm
user@host# set encryption-algorithm algorithm

[edit security ike]
user@host# set policy policy-name
[edit security ike policy policy-name]
user@host# set proposals proposal-name
user@host# set pre-shared-key ascii-text key

[edit security ike]
user@host# set gateway gateway-name
[edit security ike gateway gateway-name]
user@host# set ike-policy policy-name
user@host# set address ip-address
user@host# set external-interface interface-name
user@host# set local-address address
```

For more information on IKE, see *Internet Key Exchange (IKE) for IPsec VPN*.

- Use the IPsec tunnel mode.

NOTE: To use IPsec, you must have an MX-SPC3 services card installed on your device.

```
[edit security ipsec]
user@host# set proposal proposal-name
[edit security ipsec proposal proposal-name]
user@host# set protocol (ah | esp)
user@host# set authentication-algorithm algorithm
user@host# set encryption-algorithm algorithm

[edit security ipsec]
user@host# set policy policy-name
[edit security ipsec policy policy-name]
```



```

user@host# set proposals proposal-name

[edit security ipsec]
user@host# set vpn vpn-name
[edit security ipsec vpn vpn-name]
user@host# set bind-interface interface-name
user@host# set ike gateway gateway-name
user@host# set ike ipsec-policy policy-name
user@host# set establish-tunnels immediately

```

For more information on configuring IPsec tunnels, see *IPsec VPN Configuration Overview*.

If IPsec cannot be used, we recommend using a content of communication point of aggregation (CC-PAG) device, which encrypts the data using TLS before sending it to the MDF.

NOTE: You can still lawfully intercept traffic on 5G networks without configuring IPsec. However, we recommend that you use IPsec to comply with 3GPP standards.

The LI_T3 interface between the SMF and UPF supports TLS encryption. You can enable this by configuring a server certificate and mutual authentication on the local HTTPS server under the [edit system services rest https-5g] hierarchy.

RELATED DOCUMENTATION

| [destination \(saegw system\)](#) | 86

Load and Overload Control on Junos Multi-Access User Plane

IN THIS SECTION

- [Load Control Information](#) | 36
- [Overload Control Information](#) | 36
- [Maintenance Mode](#) | 37

Load and Overload Control are a set of optional features within the 5G Core network (5GC). You can use these features to manage traffic loads on your network and maintain service to user equipment (UE) during extreme situations and peak traffic.

Load Control Information (LCI) and Overload Control Information (OCI) reports provide you with the information needed to manage your control plane traffic. LCI and OCI use the information collected from the user plane (UPF).

Load Control Information

Load Control allows the User Plane Function (UPF) to send specific traffic load information to the Control Plane Function (CPF) through the Sx/N4 interface. With this information, you are able to adaptively balance your session loads across various UPFs.

Load Control Information (LCI) reports gather specific information from the user plane:

- **CPU Usage:** CPU utilization on the current UPF.
- **Session Capacity:** The maximum number of sessions supported based on your system profile.
- **Memory Usage:** Maximum memory in use. Statistics for shared and heap memory, as well as the maximum usage.
- **Bandwidth Usage:** The amount of the available bandwidth in use on downlink and uplink paths.
- **Metric Calculation:** LCI is reported as a metric percentage from 0 to 100. If the metric reaches 90 percent, additional LCI reports generate for any change. If the metric reaches 95 percent, a full LCI and telemetry report generate each time the timer expires (every 15 seconds).

Overload Control Information

Overload Control allows the UPF to gracefully reduce its traffic load. It instructs peer control plane functions to reduce the amount of sessions being sent to the UPF. In this manner, overload control is able to avoid spreading an overload to other nodes in the network.

Like LCI, Overload Control Information (OCI) reports gather specific information from the UP:

- **UE Registration Surges:** A large number of UEs registering on the network will cause a surge of login sessions. OCI monitors the inflight number and reports an overload if the number of inflight sessions reach 80percent of the maximum.
- **UE Mobility and Application Signal:** A large number of UEs using specific applications can cause a lot of hand-over and QoS flow control signaling. This results in a surge of session modify messages. If the number of "session modify" messages exceeds a preset threshold, the UPF generates an overload report.
- **Packet Forwarding Engine Congestion Signal:** If the Packet Forwarding Engine receives more messages than it can handle, the Packet Forwarding Engine will send traffic in the Waiting-To-Send (WTS) queue. If any items are present in the WTS queue, an OCI report generates.
- **Anchor Packet Forwarding Engine Failover:** When an anchor Packet Forwarding Engine fails over and the secondary Packet Forwarding Engine boots, a 30 percent overload report is sent.
- **Overload Metric Report:** The OCI includes the metric of the load that needs to be reduced and how long the load reduction will last.

Maintenance Mode

Maintenance mode allows you to resolve an overload issue and perform other back-end network management tasks - such as a system upgrade. When you enter maintenance mode, the UPF sends a metric value of 100 percent to the CPF. Maintenance mode prevents new sessions from starting on the UPF, but allows existing sessions and traffic to continue. When you exit maintenance mode, the true load metric is sent to the CPF and normal session activity resumes.

To enter and exit maintenance mode, you will use `service-mode` statements.

See "[service-mode](#)" on [page 114](#) for additional information about using maintenance mode.

Mobile-Edge Configuration Commit Check

Whenever you modify or delete a configuration that supports mobile-edge features, Junos OS will check to see if any active sessions exist. If any active sessions exist, Junos OS provides an error message and rejects your modifications.

QoS in Junos Multi-Access User Plane

Quality of service (QoS) is a set of Junos OS performance features. You (the network administrator) can use these features to improve network performance by differentiating traffic into classes and then applying different behaviors to different types of traffic. These features also enable you to guarantee a certain level of network performance.

Usually, routers forward traffic using best-effort service without any control on throughput, packet loss, jitter, or delay. The QoS features provide differentiated services depending on the type of traffic. This feature improves performance in cases where the best-effort delivery is insufficient, such as in transmission of real-time audio and video.

Junos Multi-Access User Plane provides the following QoS features:

- **GBR forwarding queues**—Ensure that traffic on these queues has a minimum bit rate or guaranteed bit rate (GBR). We support eight preconfigured forwarding queues on the virtual routing and forwarding (VRF) loopback interface of the anchor Packet Forwarding Engine. Of the eight queues, four are guaranteed bit rate queues with three priorities each (high, medium, and low), and four are excess or best-effort queues with two priorities each (high and low).

NOTE: The user plane sends all downlink traffic over the VRF interface using these eight forwarding queues. In the case of an intermediate UPF, which uses the VRF interface for both uplink and downlink traffic, the uplink traffic uses the best-effort queues. Otherwise, the uplink traffic does not use the VRF interface.

- **Forwarding queue mapping**—Uses the DiffServ code point (DSCP) value that the control plane provides in the Transport Level Marking to map the bearer or flow to the appropriate forwarding queue. For 4G, the user plane determines the DSCP value based on the QoS Class Identifier (QCI) and, optionally, the Admission Retention and Pre-emption Policy level. For 5G, the user plane determines the DSCP value based on the 5G QoS Identifier (5QI), the priority level, and, optionally, the Admission Retention and Pre-emption Policy level.
- **Bandwidth reservation**—Supports reserving a fraction of the bandwidth for queues with express traffic and guaranteed bit rate traffic in the downlink direction. The express queue handles high-priority, highly policed traffic that has a higher priority than guaranteed bit rate traffic. For example, the express queue handles IP Multimedia subsystem (IMS) signals, which have a higher priority than guaranteed bit rate traffic. Three queues—`gbr-high`, `gbr-medium`, and `gbr-low`—handle the guaranteed bit rate traffic.
- **Call admission control**—Tracks the total guaranteed bit rate bandwidth in the downlink direction across all bearers and flows assigned to each anchor Packet Forwarding Engine. This feature ensures that bearers and flows do not oversubscribe the reserved guaranteed bit rate bandwidth.

The user plane admits a new session with guaranteed bit rate flow only if the least utilized anchor Packet Forwarding Engine can accommodate the requested guaranteed bit rate bandwidth. If an existing session is modified such that the new total guaranteed bandwidth exceeds the reserved bandwidth, the user plane accepts the modification and logs an oversubscription error message.

The user plane always admits non-guaranteed bit rate flows as they are not offered any guaranteed bandwidth.

- **Policing**—Enables you to limit traffic in the uplink and downlink directions to a specified bandwidth. Guaranteed bit rate flows support policers for both guaranteed bit rate and maximum bit rate. Express flows and best-effort flows support only maximum bit rate policers.

The user plane always transmits green packets (conforming to the guaranteed bit rate). Yellow packets exceed the guaranteed bit rate but conform to the maximum bit rate. The user plane drops these packets immediately for express queues, and drops them based on the overall load for guaranteed bit rate and best-effort queues. The user plane always drops red packets (exceeding the maximum bit rate).

RELATED DOCUMENTATION

| [Example: Configure GBR Forwarding on Junos Multi-Access User Plane](#) | 71

2

CHAPTER

Configuring Junos Multi-Access User Plane

[MX Series Router As Junos Multi-Access User Plane | 41](#)

[Anchor PFEs and Redundancy in Junos Multi-Access User Plane | 51](#)

[Downlink Forwarding Queues and Forwarding Classes | 55](#)

[Example: Configuring an MX Router as an SAEGW-U | 56](#)

[Example: Configure GBR Forwarding on Junos Multi-Access User Plane | 71](#)

MX Series Router As Junos Multi-Access User Plane

IN THIS SECTION

- Overview | 41
- Configuring Junos Multi-Access User Plane on an MX Router | 45

Overview

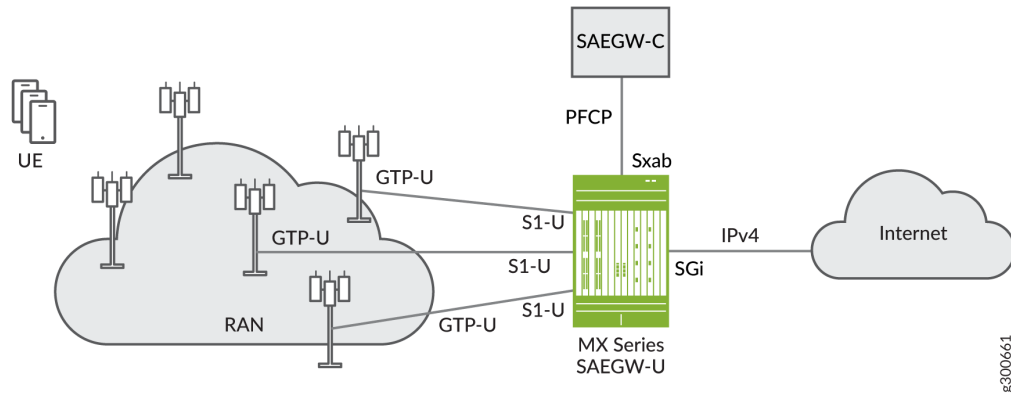
Junos Multi-Access User Plane on a single MX Series router can function in four modes:

- As a combined SGW user plane (SGW-U) and PGW user plane (PGW-U) in a single MX series router. The combined SGW-U/PGW-U is referred to as a SAEGW-U (System Architecture Evolution Gateway-User Plane). The SAEGW-U interoperates with a third-party SAEGW-C through a combined Sxab interface.
- As a standalone SGW user plane (SGW-U). The SGW-U interoperates with a third-party SGW-C through a the Sxa interface and one or more Juniper or third-party PGW-Us over one or more S5/8-U interfaces.
- As a standalone PGW user plane (PGW-U) in a single MX router. The PGW-U interoperates with a third-party PGW-C through a the Sxb interface and one or more Juniper or third-party SGW-Us over one or more S5/8-U interfaces.
- As a standalone user plane function (UPF) for carrying 5G traffic. The UPF interoperates with a third-party session management function (SMF).

Configuring Junos Multi-Access User Plane on an MX Series router is essentially the same for each of these functions. This topic describes this configuration process.

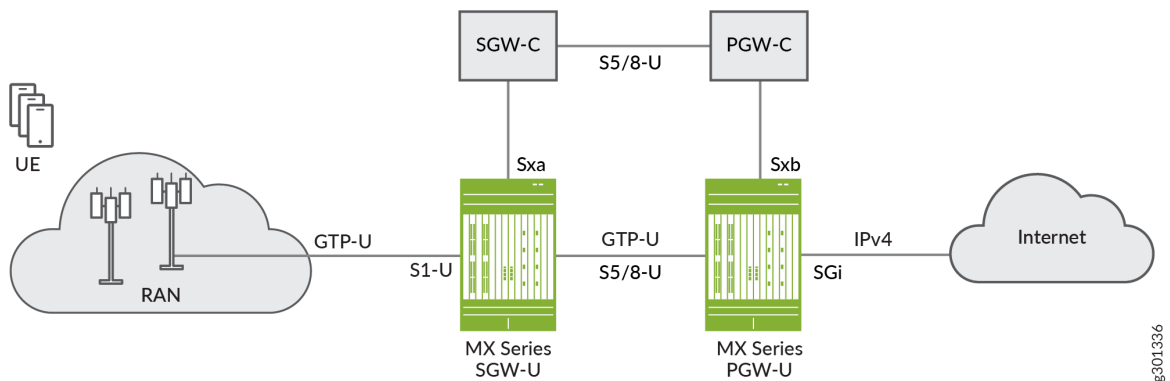
As [Figure 14 on page 42](#) shows, Juniper's MX SAEGW-U interoperates with a third-party SAEGW-C through a combined Sxab interface.

Figure 14: MX Series SAEGW-U in the CUPS Wireless Network Architecture



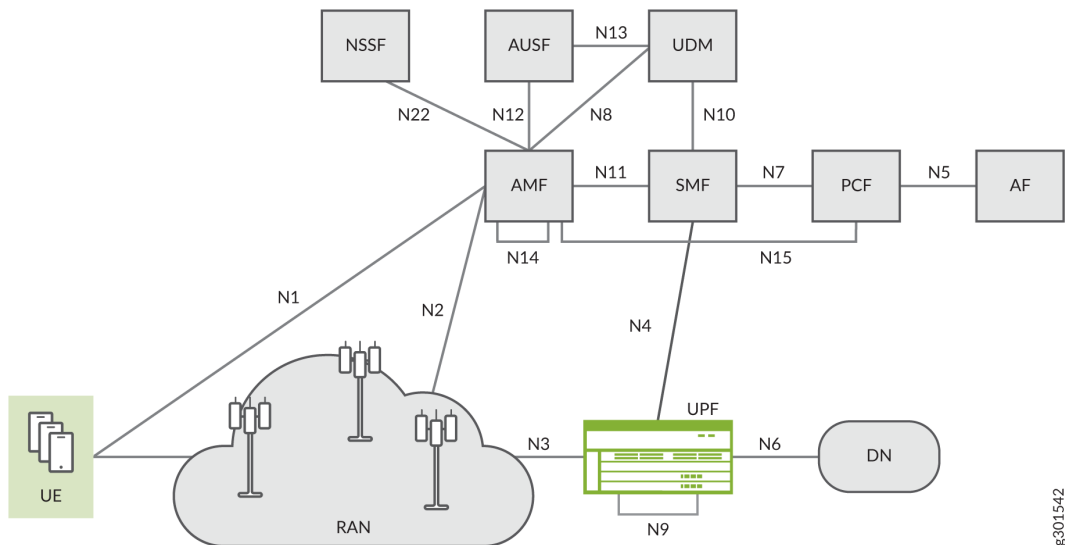
As [Figure 15 on page 42](#) shows, the SGW-U interoperates with a third-party SGW-C through a the Sxa interface and one or more Juniper or third-party PGW-U's over one or more S5/8-U interfaces. The PGW-U interoperates with a third-party PGW-C through a the Sxb interface and one or more Juniper or third-party SGW-U's over one or more S5/8-U interfaces.

Figure 15: MX Series SGW-U and PGW-U in the CUPS Wireless Network Architecture



As [Figure 16 on page 43](#) shows, Juniper's MX UPF interoperates with a third-party SMF through the N4 interface.

Figure 16: MX Series UPF in the 5G CUPS Wireless Network Architecture



The MX as SAEGW-U, SGW-U, PGW-U or UPF supports the following CUPS interfaces:

- **Sxab/Sxa/Sxb/N4**—Packet Forwarding Control Protocol (PFCP) enables communication between the Junos Multi-Access User Plane and the control plane. PFCP encodes TLV messages for transport over UDP/IP. This interface can also transport user data packets (GTP-U based) between the user plane and control plane. Junos Multi-Access User Plane runs PFCP as the control protocol with the third-party control plane to set up data paths for wireless subscribers.
- **S1-U/N3**—This interface is the data path between an eNodeB and the Junos Multi-Access User Plane. Application data packets from end-user equipment are encapsulated over GTP. For upstream packets, Junos Multi-Access User Plane is responsible for GTP tunnel termination and forwarding the user packets to the core. For downstream packets from core, Junos Multi-Access User Plane adds the GTP header and forwards to eNodeB(s). The data plane handles IP packets encapsulated in GTP-U from/to eNodeBs that arrive for the mobile subscribers and performs routing to/from the external Internet.
- **S5/8-U**—The S5/8-U interface is the data path between an SGW-U and a PGW-U.
- **N9**—Interface between two UPFs.
- **SGi/N6**—Interface to the core Internet, supporting IPv4.

Junos Multi-Access User Plane provides purely the user plane function in the form of an MX router that interacts with a third-party control plane function. The MX router receives instructions from the control plane through the Sxab/Sxa/Sxb/N4 interface using PFCP. Based on those instructions, the MX routing

engine manages user plane sessions and programs data paths in the anchor PFEs. For the MX router to provide the user plane functionality, it must contain the following minimum elements:

- **At least one anchor PFE interface**—An anchor PFE interface is a line card interface that has no physical interface connection, but rather provides the core processing of data traffic by doing the following:
 - Encoding/decoding of GTP-U packets. The anchor PFE interface decodes GTP-U packets from eNodeBs and forwards them to the core network and encodes IPv4 packets from the core network and forwards them to eNodeBs.
 - Enforces class of service and firewall filter rules on subscriber sessions
 - Collects statistics on data usage for charging/accounting purpose
- **At least one signalling/control interface**—This is the Sxab/Sxa/Sxb/N4 interface in the CUPS architecture. The signalling/control interface is a physical interface that does the following:
 - Sends/receives PFCP packets to/from the control plane
- **At least one ingress interface**—This is the S1-U or N3 or the S5/8-U or N9 interface in the CUPS architecture, depending on where the device is in the data stream. The ingress interface is a physical interface that does the following:
 - As the S1-U or N3 interface, forwards GTP-U packets between eNodeBs and the anchor PFE.
 - As the S5/8-U or N9 interface, receives GTP-U packets from the downstream UPF.
- **At least one egress interface**—This is the SGi or N6 or the S5/8-U or N9 interface in the CUPS architecture, depending on where the device is in the data stream. The egress interface is a physical interface that does the following:
 - As the SGi or N6 interface, forwards IPv4 packets between the anchor PFE and the core network.
 - As the S5/8-U or N9 interface, sends GTP-U packets to the upstream UPF.

NOTE: You can configure all interface types on the same line card, as long as that line card supports all of the interface types. See [Table 1 on page 12](#) for a list of line card support by interface type.

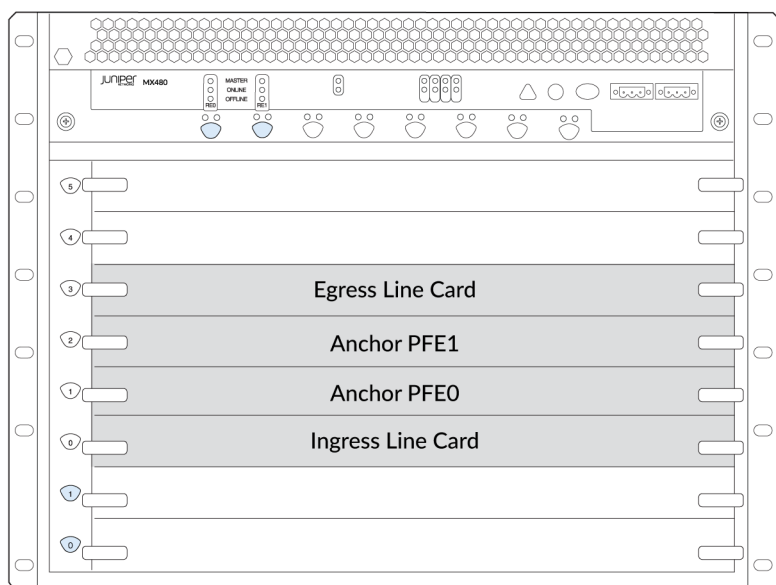
Configuring Junos Multi-Access User Plane on an MX Router

IN THIS SECTION

- [DDoS Attack Protection Configuration | 46](#)
- [GRES Configuration | 46](#)
- [Chassis Configuration for the Anchor PFE Line Cards | 47](#)
- [Interface Configuration | 47](#)
- [Mobile Edge Configuration | 49](#)

As [Figure 17 on page 45](#) shows, a standard setup of an MX router as either an SAEGW-U, an SGW-U, a PGW-U, or a UPF includes an ingress line card, and egress line card, and a recommended two anchor PFE line cards operating redundantly.

Figure 17: Standard setup for MX router as Junos Multi-Access User Plane



- The ingress line card provides the S1-U interface (SAEGW-U, SGW-U), the S5/8-U interface (PGW-U), or the N3 interface (UPF). , The ingress line card also provides the Sxab interface (SAEGW-U), the Sxa interface (SGW-U), the Sxb interface (PGW-U), or the N4 interface (UPF).

- The anchor PFE line cards provide the core processing of data traffic through internal pfe- interfaces. At least one anchor PFE card is required, but two are recommended to provide redundancy.
- The egress line card provides the SGi interface (SAEGW-U, PGW-U), the S5/8-U interface (SGW-U), or the N6 interface (UPF).
- You can configure all of this functionality on a single line card as long as that line card supports all of the Junos Multi-Access User Plane functionality. We show separate line cards here for simplicity and recommended setup.

To configure Junos Multi-Access User Plane on an MX router, perform the following configuration procedures in the listed order:

DDoS Attack Protection Configuration

Define DDoS attack protection for PFCP protocol traffic.

1. Configure protection for the PFCP protocol.

```
[edit system ddos-protection protocols]
user@host# set pfc aggregate bandwidth packets-per-second
user@host# set pfc aggregate burst size
user@host# set pfc aggregate recover-time seconds
```

2. Configure GTP path management protection.

```
[edit system ddos-protection protocols]
user@host# set gtp-path-mgmt aggregate bandwidth packets-per-second
user@host# set gtp-path-mgmt aggregate burst size
user@host# set gtp-path-mgmt aggregate recover-time seconds
user@host# commit
```

GRES Configuration

The *graceful Routing Engine switchover* (GRES) feature in Junos OS enables a router with redundant Routing Engines to continue forwarding packets, even if one Routing Engine fails. GRES preserves interface and kernel information. Traffic is not interrupted.

Configure Graceful Restart (GRES).

```
[edit chassis]
user@host# set redundancy graceful-switchover
user@host# commit
```

SEE ALSO

[GRES on Junos Multi-Access User Plane](#) | 22

Chassis Configuration for the Anchor PFE Line Cards

Define each Packet Forwarding Engine (PFE) on each anchor PFE line card as an anchor interface.

1. Enable enhanced IP network services.

```
[edit chassis]
user@host# set network-services enhanced-ip
```

2. Configure slots for anchor PFE processing.

```
[edit chassis]
user@host# set fpc anchor-pfe0-slot pfe 0 forwarding-packages mobility user-plane
user@host# set fpc anchor-pfe0-slot pfe 1 forwarding-packages mobility user-plane
user@host# set fpc anchor-pfe1-slot pfe 0 forwarding-packages mobility user-plane
user@host# set fpc anchor-pfe1-slot pfe 1 forwarding-packages mobility user-plane
user@host# commit
```

Interface Configuration

Configure the interfaces needed.

1. Define the egress interface (SGi, S5/8-U, or N6). This interface is on the egress line card.

```
[edit interfaces]
user@host# set egress-interface-name unit 0 family inet address interface-address
```

2. Define the interface that connects to the control plane function (Sxab, Sxa, Sxb, or N4). This interface is on the ingress line card.

```
[edit interfaces]
user@host# set cpf-interface-name unit 0 family inet address interface-address
```

3. Define the ingress interface (S1-U, S5/8-U, N3). This interface is on the ingress line card.

```
[edit interfaces]
user@host# set ingress-interface-name unit 0 family inet address interface-address
```

4. Define the UPF local address and Mobile Edge interface.

```
[edit interfaces]
user@host# set lo0 unit 0 family inet address UPF-local-address
user@host# set mif unit 0 family inet
```

NOTE: If you are connecting to multiple control planes, define the local address under the ["control-plane-peers" on page 107](#) stanza for each control plane function (CPF) rather than define a single loopback address.

NOTE: mif.0 is used in the default inet.0 routing instance. Junos OS creates a default APN with inet.0 as the routing instance. If you want to configure other routing instances, you must create mif interfaces with unit numbers other than 0.

5. Assuming two anchor PFE linecards, each with two PFEs, define the anchor PFE interfaces.

```
[edit interfaces]
user@host# set apfe0 anchoring-options primary-list pfe-pfe0-slot/0/0
user@host# set apfe0 anchoring-options secondary pfe-pfe1-slot/0/0
user@host# set apfe1 anchoring-options primary-list pfe-pfe0-slot/1/0
user@host# set apfe1 anchoring-options secondary pfe-pfe1-slot/1/0
user@host# commit
```

NOTE: You cannot mix primary and secondary anchor PFEs on the same MPC. An MPC can have only either primary anchor PFEs or secondary anchor PFEs.



CAUTION: Changing the anchor PFE redundancy configuration once sessions are active kills all active sessions.

Mobile Edge Configuration

Once you've configured all of the necessary interfaces, you can configure the MX router to be a UPF.

1. Configure the connection to the control plane.

```
[edit services mobile-edge gateways saegw gateway-name control-plane-peers]
user@host# set local-address local-address
user@host# set apn-services apns apn-name mobile-interface mif.0
user@host# set peer-groups group-name path-management enable
user@host# set peer-groups group-name heartbeat-interval seconds
user@host# set peer-groups group-name n3-requests n3-requests
user@host# set peer-groups group-name t3-response seconds
user@host# set peer-groups group-name peer-address remote-peer-address
user@host# set peer-groups group-name peer-hostname remote-peer-hostname
```

NOTE: If you are connecting to multiple control planes, define the local address under the control-plane-peers stanza for each CPF. The loopback address, however, is still required for Lawful Intercept to function.

2. Configure the connection to the access network through the S1-U or N3 interface, if applicable.

```
[edit services mobile-edge gateways saegw gateway-name access-network-peers]
user@host# set local-address local-address
user@host# set peer-groups group-name peer-address remote-peer-address
user@host# set peer-groups group-name peer-hostname remote-peer-hostname
```

3. Configure the connection to the core network peers through the S5/8-U or N9 interface, if applicable.

```
[edit services mobile-edge gateways saegw gateway-name core-network-peers]
user@host# set local-address local-address
user@host# set routing-instance routing-instance-name
user@host# set path-management enable
user@host# set t3-response seconds
```

4. Define the interfaces that will provide the anchor PFE functionality.

```
[edit services mobile-edge gateways saegw gateway-name system]
user@host# set anchor-pfes interface apfe0
user@host# set anchor-pfes interface apfe1
user@host# commit
```

RELATED DOCUMENTATION

- [Anchor PFEs and Redundancy in Junos Multi-Access User Plane | 51](#)
- [Example: Configuring an MX Router as an SAEGW-U | 56](#)

Release History Table

Release	Description
23.1R1	Starting in Junos OS Release 23.1R1, Junos Multi-Access User Plane performs a commit check for active sessions when the mobile edge configuration is modified or deleted. If the check finds any active sessions, the commit will be prevented.
21.3R1	Starting in Junos OS Release 21.3R1, Junos Multi-Access User Plane provides a long-route implementation as a replacement for a filter-based implementation to steer traffic to the anchor Packet Forwarding Engine removing the need for a firewall filter to route GTP packets.

Anchor PFEs and Redundancy in Junos Multi-Access User Plane

IN THIS SECTION

- [Understanding the Anchor PFE | 51](#)
- [Configuring No Redundancy for the Anchor PFEs | 51](#)
- [Configuring 1:1 Hot-standby Redundancy for the Anchor PFEs | 52](#)

Understanding the Anchor PFE

An anchor PFE is the *Packet Forwarding Engine* (PFE) on a standard line card that has no direct interface connections, but rather provides the core processing of data traffic by doing the following:

- Encoding/decoding of GTP-U packets. The anchor PFE decodes GTP-U packets from eNodeBs and forwards them to the core network and encodes IPv4 packets from the core network and forwards them to eNodeBs.
- Enforces class of service and firewall filter rules on subscriber sessions.
- Collects statistics on data usage for charging/accounting purpose.

Following are important points to consider when setting up anchor PFEs:

- You must configure at least one anchor PFE line card. We recommend at least two with 1:1 hot-standby redundancy.
- Each anchor PFE requires a defined pfe- interface of the form pfe-x/y/z.

Configuring No Redundancy for the Anchor PFEs

When no redundancy is required, all anchor PFE interfaces are equally available. The SAEGW-U uses all anchor PFE logical interfaces to anchor sessions/bearers. The routing engine (RE) of the SAEGW-U steers the GTP-U traffic for sessions and bearers to each of the anchor PFEs. The GTP processing for

sessions and bearers and filter processing happens on the respective anchor PFE. The charging data is also maintained, collected and reported from the anchor for each session and its bearer.

When there is no redundancy configured, a failure of the anchor PFE line card is catastrophic for the SAEGW-U sessions/bearers in that control plane sessions corresponding to the failed anchor PFE and its data plane are lost. If supported by the SAEGW-C, the SAEGW-U can send an Sx Session Set Deletion Request for the lost sessions through the Sx interface, and the sessions are flushed in the SAEGW-C. All charging and other accounting data is lost for the sessions and bearers. New sessions can come up on the failed anchor PFE interface *only* when all sessions are flushed in the SAEGW-C for the failed anchor PFE, even if the anchor PFE comes up sooner. If other anchor PFE interfaces are available, new sessions can come up instantly on those anchor PFE interfaces.

Following is a typical configuration for two anchor PFEs with no redundancy.

1. Configure slot 1 and slot 2 for anchor processing.

```
[edit chassis]
user@host# set fpc 0 pfe 0 forwarding-packages mobility user-plane
user@host# set fpc 1 pfe 0 forwarding-packages mobility user-plane
```

2. Configure interfaces in slot 1 and slot 2 for PFCP processing.

```
[edit services mobile-edge gateways gateway-name system]
user@host# set anchor-pfes interface pfe-0/0/0
user@host# set anchor-pfes interface pfe-1/0/0
```

Configuring 1:1 Hot-standby Redundancy for the Anchor PFEs

To have 1:1 PFE redundancy, an aggregated anchor PFE group can be formed as below using exactly two PFE logical interfaces from different slots:

- Aggregated Anchor PFE group 1 – pfe-0/0/0 (primary), pfe-1/0/0 (secondary)
- Aggregated Anchor PFE group 2 – pfe-0/1/0 (primary), pfe-1/1/0 (secondary)

You cannot have primary and secondary anchor PFEs on the same line card. For example, the following combination is not supported:

- Aggregated anchor PFE group 1 – pfe-0/0/0 (primary), pfe-1/1/0 (secondary)
- Aggregated anchor PFE group 2 – pfe-1/0/0 (primary), pfe-0/1/0 (secondary)

We also do not recommended configuring anchor PFEs on two separate line cards with their secondary anchor PFEs on just one line card. For example:

- Aggregated anchor PFE group 1 – pfe-0/0/0 (primary), pfe-2/0/0 (secondary)
- Aggregated anchor PFE group 2 – pfe-1/0/0 (primary), pfe-2/1/0 (secondary)

When aggregated anchor PFE configuration is used, both the primary anchor PFE and secondary anchor PFE have the session state. But the routing engine (RE) steers the GTP-U traffic for sessions and bearers only to the primary anchor PFE. The GTP processing for sessions and bearers and filter processing happens on the primary anchor PFE. The charging data is also maintained, collected and reported from the primary anchor PFE. The secondary is in hot-standby mode and is ready for takeover only in the event of primary anchor PFE failure.

Given the considerable load that a single anchor PFE linecard can need to handle, a single anchor PFE linecard is limited to a maximum of two redundancy groups. You can configure a single anchor PFE for one of the following roles:

- Dedicated primary for one redundancy group
- Dedicated secondary for one redundancy group
- Primary for two redundancy groups
- Secondary for two redundancy groups

When 1:1 redundancy is operational, the redundancy interface process monitors the health of the primary and secondary anchor PFEs.

A secondary anchor PFE failure results in zero data plane traffic loss on the primary anchor PFE. All active sessions remain unaffected. New sessions can come up without any latency. When the secondary anchor PFE is restored, there is a catchup phase to program the already active sessions and bearers in the secondary anchor PFE. After this is completed, new sessions are programmed in the secondary anchor PFE in parallel to the primary anchor PFE. From this point forward, the secondary anchor PFE can take over anytime.

If the primary anchor PFE fails, the secondary anchor PFE starts handling traffic. It might take a few seconds to detect the failure of the primary anchor PFE and for the RE to re-route the GTP-U traffic to the secondary PFE. This delay results in traffic loss during the anchor PFE switchover. Additionally, there is a loss of any charging data not reported by the primary anchor PFE before it failed. Anchor PFE switchover does not affect active sessions/bearers. In-flight changes to sessions and bearers as well as new sessions being created during anchor PFE switchover are rolled back. If supported by the SAEGW-C, the SAEGW-U can send an Sx Session Set Deletion Request for the lost sessions through the Sx interface, and the sessions are flushed in the SAEGW-C. After the anchor PFE switchover, the configured primary anchor PFE can be restored, starting as a secondary anchor PFE and going through catch-up similar to secondary APFE failure and restoration described above.

To configure redundancy for two anchor PFE line cards:

1. Configure PFE interfaces in each anchor PFE line card slot in aggregated anchor PFE configuration. For example:

```
[edit interfaces]
user@host# set apfe0 anchoring-options primary-list pfe-0/0/0
user@host# set apfe0 anchoring-options secondary pfe-1/0/0
user@host# set apfe1 anchoring-options primary-list pfe-0/1/0
user@host# set apfe1 anchoring-options secondary pfe-1/1/0
```

2. Reference the aggregated anchor PFE interfaces in the SAEGW-U configuration. For example:

```
[edit services mobile-edge gateways gateway-name system]
user@host# set anchor-pfes interface apfe0
user@host# set anchor-pfes interface apfe1
```

When the configured primary anchor PFE fails, the secondary anchor PFE takes over. When the failed primary anchor PFE recovers, it does not automatically resume primary status. It is now in secondary status until the configured secondary anchor PFE fails.

1. However, you can force the two anchor PFEs to revert to their configured state by setting a revert-time, in hours, under the [edit interfaces aggregated-pfe-group anchoring-options] hierarchy. For example:

```
[edit interfaces]
user@host# set apfe0 anchoring-options revert-time 2
user@host# set apfe1 anchoring-options revert-time 2
```

RELATED DOCUMENTATION

Downlink Forwarding Queues and Forwarding Classes

IN THIS SECTION

- [Downlink Forwarding Queues | 55](#)
- [VRF Loopback Queue Assignment | 55](#)
- [WAN Egress Forwarding Class Assignment \(5G Only\) | 56](#)

Downlink Forwarding Queues

Each anchor Packet Forwarding Engine is equipped with a set of 8 queues on the VRF Loopback interface (lo0). All mobile subscriber traffic on the anchor Packet Forwarding Engine traveling downlink will use these queues. These queues allow for service differentiation of your mobile subscriber traffic. The Downlink Forwarding Queues are preconfigured with default names and attributes, but you can manage the queues individually with one of these two commands:

```
[edit class-of-service forwarding-classes]
user@host# set queue queue # class-name
```

```
[edit class-of-service forwarding-classes]
user@host# set class class-name queue-num queue #
```

To view your queue details, use the command "[show services mobile-edge anchor class-of-service](#)" on [page 118](#).

VRF Loopback Queue Assignment

A downlink forwarding queue/class is assigned to each bearer/service data flow (SDF). Assignment depends on whether your network has provided Transport Level Marking (TLM) within the forwarding action request (FAR).

- **TLM Provided:** If TLM is included with the FAR, then the TLM DSCP value maps mapped to a forwarding class that is using a configured classifier.
- **TLM Not Provided:** If TLM is not included with the FAR, the GBR-LOW queue/class is assigned to the Guaranteed Bit Rate (GBR). The BE-LOW-0 queue gets assigned to the non-GBR bearer/SDF.

See ["downlink-dscp-to-forwarding-class" on page 88](#) for more information.

WAN Egress Forwarding Class Assignment (5G Only)

You can configure a WAN Egress Classifier for the User Plane Function (UPF). This classifier maps DSCP codes from the FAR's TLM to the forwarding class assigned to the packet. This classifier then selects the specific egress queue to use on the WAN interface. You use the `downlink-dscp-to-egress-forwarding-class` command to configure the WAN egress classifier.

The Egress Forwarding class gets assigned to the SDF. All packets matching that SDF inherit the forwarding class. If the Egress Forwarding Class is not assigned to the SDF, existing forwarding class assignments are unaffected.

See ["downlink-dscp-to-egress-forwarding-class" on page 89](#) for more information.

RELATED DOCUMENTATION

No Link Title
No Link Title
No Link Title

Example: Configuring an MX Router as an SAEGW-U

IN THIS SECTION

- [Requirements | 57](#)
- [Overview | 59](#)
- [Configuration | 60](#)

This example shows how to configure an MX Series Router as an SAEGW-U for the Junos Multi-Access User Plane solution.

NOTE: This example is also valid for configuring an MX Series Router as a UPF for 5G sessions. Junos Multi-Access User Plane can support 4G and 5G sessions simultaneously.

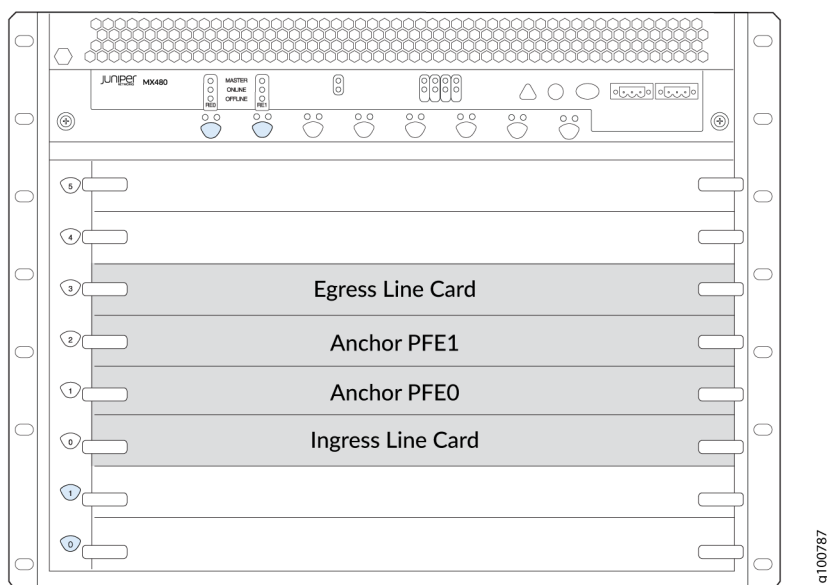
Requirements

This example uses the following hardware and software components:

- MX480 (can also be MX240, MX960) router with:
 - Two MPC7s to act as anchor packet forwarding engines (PFEs) to handle GTP-U processing
 - Two MPC2s (can also be MPC3, MPC5, MPC7, MPC10) to act as ingress and egress PFEs
- Junos OS Release 21.3R1 or later

[Figure 18 on page 58](#) below shows the hardware for this example.

Figure 18: Standard setup for MX Series router as SAEGW-U



- The ingress line card (slot 0) provides the S1-U interface, connecting to the radio access network (RAN), and the combined Sxa/Sxb interface, connecting to the SAEGW-C.
- The anchor PFE line cards (slots 1 and 2) provide the core processing of data traffic through internal pfe- interfaces. At least one anchor PFE card is required, but two are recommended to provide redundancy.
- The egress line card (slot 3) provides the SGi interface, connecting to the core Internet.

Before you configure the MX Series Router as an SAEGW-U for the Junos Multi-Access User Plane solution, be sure you have:

- At least one configured SAEGW-C that you provide
- At least one eNodeB
- Access to a packet data network (PDN)

Overview

IN THIS SECTION

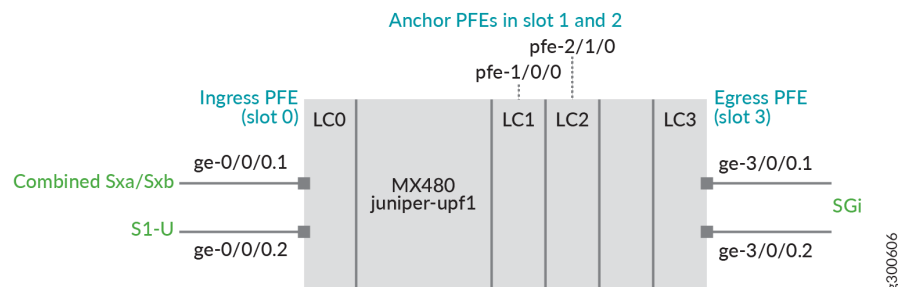
- [Topology | 59](#)

Topology

In this example (see [Figure 19 on page 59](#)):

- An MPC2 is in slot 0 with ge-0/0/0.1 providing the combined Sxa/Sxb interface and ge-0/0/0.2 providing the S1-U interface.
- MPC7s are in slots 1 and 2 to provide the anchor PFE interfaces.
- And MPC2 is in slot 3 with ge-3/0/0.1 and ge-3/0/0.2 providing SGi interfaces.

Figure 19: Configuring an MX Router as an SAEGW-U



Configuration

IN THIS SECTION

- [CLI Quick Configuration | 60](#)
- [Procedure | 61](#)
- [Results | 64](#)

CLI Quick Configuration

To quickly configure this example, copy the following commands, paste them into a text file, remove any line breaks, change any details necessary to match your network configuration, and then copy and paste the commands into the CLI at the [edit] hierarchy level.

```
set system ddos-protection protocols pfc aggregate bandwidth 20000
set system ddos-protection protocols pfc aggregate burst 9000
set system ddos-protection protocols pfc aggregate recover-time 30
set system ddos-protection protocols gtp-path-mgmt aggregate bandwidth 8400
set system ddos-protection protocols gtp-path-mgmt aggregate burst 8400
set system ddos-protection protocols gtp-path-mgmt aggregate recover-time 30
set chassis redundancy graceful-switchover
set chassis fpc 1 pfe 0 forwarding-packages mobility user-plane
set chassis fpc 2 pfe 1 forwarding-packages mobility user-plane
set chassis network-services enhanced-ip
set interfaces ge-0/0/0 vlan-tagging
set interfaces ge-0/0/0 unit 1 vlan-id 101
set interfaces ge-0/0/0 unit 2 vlan-id 102
set interfaces ge-0/0/0 unit 1 family inet address 10.0.0.1/24
set interfaces ge-0/0/0 unit 2 family inet address 20.0.0.1/24

set interfaces ge-3/0/0 vlan-tagging
set interfaces ge-3/0/0 unit 1 vlan-id 101
set interfaces ge-3/0/0 unit 2 vlan-id 102
set interfaces ge-3/0/0 unit 1 family inet address 30.0.1.1/24
set interfaces ge-3/0/0 unit 2 family inet address 30.0.2.1/24
set interfaces lo0 unit 0 family inet address 100.0.0.1/32
set interfaces mif unit 0 family inet
```

```

set interfaces mif unit 1 family inet
set interfaces apfe0 anchoring-options primary-list pfe-1/0/0
set interfaces apfe0 anchoring-options secondary pfe-2/1/0
set services mobile-edge gateways saegw juniper-upf1 control-plane-peers local-address 10.0.0.1
set services mobile-edge gateways saegw juniper-upf1 control-plane-peers path-management enable
set services mobile-edge gateways saegw juniper-upf1 control-plane-peers heartbeat-interval 60
set services mobile-edge gateways saegw juniper-upf1 control-plane-peers apn-services apns apn-
default mobile-interface mif.0
set services mobile-edge gateways saegw juniper-upf1 control-plane-peers apn-services apns apn-
vrf1 mobile-interface mif.1
set services mobile-edge gateways saegw juniper-upf1 access-network-peers local-address 20.0.0.1
set services mobile-edge gateways saegw juniper-upf1 system anchor-pfes interface apfe0
set routing-instances vrf1 instance-type virtual-router
set routing-instances vrf1 interface mif.1
set routing-instances vrf1 interface ge-3/0/0.2
set routing-instances vrf1 routing-options static route 0.0.0.0/0 next-table inet.0

```

Procedure

Step-by-Step Procedure

The following example requires you to navigate various levels in the configuration hierarchy. For information about navigating the CLI, see *Using the CLI Editor in Configuration Mode*.

To configure the MX Router as an SAEGW-U:

1. Enable DDoS attack protection for PFCP protocol traffic.

```

[edit system ddos-protection protocols]
user@host# set pfc aggregate bandwidth 20000
user@host# set pfc aggregate burst 9000
user@host# set pfc aggregate recover-time 30
user@host# set gtp-path-mgmt aggregate bandwidth 8400
user@host# set gtp-path-mgmt aggregate burst 8400
user@host# set gtp-path-mgmt aggregate recover-time 30

```

2. Configure Graceful Restart (GRES).

```

[edit chassis]
user@host# set redundancy graceful-switchover

```

3. Configure slot 1 & slot 2 for anchor PFE processing.

```
[edit chassis]
user@host# set fpc 1 pfe 0 forwarding-packages mobility user-plane
user@host# set fpc 2 pfe 1 forwarding-packages mobility user-plane
```

4. Enable enhanced IP network services.

```
[edit chassis]
user@host# set network-services enhanced-ip
```

5. Configure the ingress logical interfaces using vlans.

```
[edit interfaces ge-0/0/0]
user@host# set vlan-tagging
user@host# set unit 1 vlan-id 101
user@host# set unit 2 vlan-id 102
user@host# set unit 1 family inet address 10.0.0.1/24
user@host# set unit 2 family inet address 20.0.0.1/24
```

6. Configure the egress PFE for routing to core/ Internet for subscriber in VRF default (apn1).

```
[edit interfaces ge-3/0/0]
user@host# set vlan-tagging
user@host# set unit 1 vlan-id 101
user@host# set unit 2 vlan-id 102
user@host# set unit 1 family inet address 30.0.1.1/24
user@host# set unit 2 family inet address 30.0.2.1/24
```

7. Configure the loopback address and the mobile interface for subscriber VRFs.

```
[edit interfaces lo0]
user@host# set unit 0 family inet address 100.0.0.1/32
[edit interfaces mif]
user@host# set unit 0 family inet
user@host# set unit 1 family inet
```

8. Define the redundancy anchor PFE interfaces.

```
[edit interfaces]
user@host# set apfe0 anchoring-options primary-list pfe-1/0/0
user@host# set apfe0 anchoring-options secondary pfe-2/1/0
```

9. Name the SAEGW-U gateway juniper-upf1 and configure the address where PFCP peers will connect to the SAEGW-U. Also, configure two APNs for SAEGW-U (apn-default to place sessions in the default routing instance and apn-vrf1 for sessions into VRF1).

```
[edit services mobile-edge gateways]
user@host# set saegw juniper-upf1 control-plane-peers local-address 10.0.0.1
[edit services mobile-edge gateways saegw juniper-upf1 control-plane-peers]
user@host# set path-management enable
user@host# set heartbeat-interval 60
user@host# set apn-services apns apn-default mobile-interface mif.0
user@host# set apn-services apns apn-vrf1 mobile-interface mif.1
```

10. Configure the address where GTP-U peers will connect to the SAEGW-U.

NOTE: This is done at a different command hierarchy from the previous step.

```
[edit services mobile-edge gateways saegw juniper-upf1 access-network-peers]
user@host# set local-address 20.0.0.1
```

11. Configure aggregate interface apfe0 for PFCP processing.

```
[edit services mobile-edge gateways saegw juniper-upf1 system]
user@host# set anchor-pfes interface apfe0
```

12. Configure the egress PFE for routing to core/ Internet for subscriber in VRF vrf1 (apn2).

```
[edit routing-instances vrf1]
user@host# set instance-type virtual-router
user@host# set interface mif.1
```

```

user@host# set interface ge-3/0/0.2
user@host# set routing-options static route 0.0.0.0/0 next-table inet.0

```

Results

From configuration mode, confirm your configuration by entering the show chassis, show interfaces, show services, show routing-instances, and show unified-edge commands. If the output does not display the intended configuration, repeat the instructions in this example to correct the configuration.

```

user@host# show system
ddos-protection {
  protocols {
    gtp-path-mgmt {
      aggregate {
        bandwidth 8400;
        burst 8400;
        recover-time 30;
      }
    }
    pfc {
      aggregate {
        bandwidth 20000;
        burst 9000;
        recover-time 30;
      }
    }
  }
}

```

```

user@host# show chassis
redundancy {
  graceful-switchover;
}
fpc 1 {
  pfe 0 {
    forwarding-packages {
      mobility {
        user-plane;
      }
    }
  }
}

```

```

    }
}
fpc 2 {
    pfe 1 {
        forwarding-packages {
            mobility {
                user-plane;
            }
        }
    }
}
network-services {
    enhanced-ip;
}

```

```

user@host# show interfaces
ge-0/0/0 {
    vlan-tagging {
        unit 1 {
            vlan-id 101;
        }
        unit 2 {
            vlan-id 102;
        }
    }
    unit 1 {
        family inet {
            address 10.0.0.1/24;
        }
    }
    unit 2 {
        family inet {
            address 20.0.0.1/24;
        }
    }
}
ge-3/0/0 {
    vlan-tagging {
        unit 1 {
            vlan-id 101;
        }
        unit 2 {

```

```

        vlan-id 102;
    }
}
unit 1 {
    family inet {
        address 30.0.1.1/24;
    }
}
unit 2 {
    family inet {
        address 30.0.2.1/24;
    }
}
}
apfe0 {
    anchoring-options {
        primary-list {
            pfe-1/0/0;
        }
        secondary pfe-2/1/0;
    }
}
lo0 {
    unit 0 {
        family inet {
            address 100.0.0.1/32;
        }
    }
}
mif {
    unit 0 {
        family inet;
    }
    unit 1 {
        family inet;
    }
}
}

```

```

user@host# show services
mobile-edge {
    gateways {

```



```

saegw juniper-upf1 {
    system {
        anchor-pfes {
            interface apfe0;
        }
    }
    control-plane-peers {
        local-address 10.0.0.1;
        path-management enable;
        heartbeat-interval 60;
        apn-services {
            apns apn-default {
                mobile-interface mif.0;
            }
            apns apn-vrf1 {
                mobile-interface mif.1;
            }
        }
    }
    access-network-peers {
        local-address 20.0.0.1;
    }
}
}
}

```

If you are done configuring the device, enter `commit` from configuration mode.

Verification

IN THIS SECTION

- [Verify SAEGW-U State | 68](#)
- [Verify SAEGW-U Peers | 68](#)
- [Verify SAEGW-U Sessions | 69](#)

Use various `show` commands to verify the SAEGW-U is functioning properly.

Verify SAEGW-U State

Purpose

Verify the SAEGW-U is running and that GRES is enabled.

Action

```
user@host> show services mobile-edge summary
Graceful-Restart      Enabled
Mastership            Master
State                 Running
Bulk Sync             Synchronized
```

Verify SAEGW-U Peers

Purpose

Verify the SAEGW-U has connected and is communicating with the SAEGW-Cs (control peers) and eNodeBs (access peers).

Action

```
user@host> show services mobile-edge peers statistics
Peers Summary:
  Total control peers: 1
  Total access peers: 1
  Total association setup request rejects: 0

Control Peer Statistics:
  IP address:      10.0.0.0
  Hostname:        saegw-c1
  Routing-Instance: default

  Heartbeat Requests Received:      11
  Heartbeat Responses Sent:         11

  Heartbeat Requests Sent:          2
  Heartbeat Responses Received:     2
```

```

Association Setup Requests Received:    1
Association Setup Responses Sent:       1

Association Release Requests Received:  0
Association Release Responses Sent:     0

Session Establishment Requests Received: 30000
Session Establishment Responses Sent (Accepted): 30000
Session Establishment Responses Sent (Rejected): 0

Session Modification Requests Received: 30000
Session Modification Responses Sent (Accepted): 30000
Session Modification Responses Sent (Rejected): 0

Session Deletion Requests Received:    23169
Session Deletion Responses Sent (Accepted): 22968
Session Deletion Responses Sent (Rejected): 0

```

Access Peer Statistics:

```

IP address:      20.0.0.0
Routing-Instance: default

```

```

Echo Requests Received:    0
Echo Responses Sent:       0
Echo Requests Sent:        0
Echo Responses Received:   0

```

Verify SAEGW-U Sessions

Purpose

Verify the SAEGW-U has active data sessions.

Action

```

user@host> show services mobile-edge sessions summary
Sessions by State:
  SESSION_WAIT: 35
  ESTABLISHED: 18561
  Total: 18596

```

```

Bearers by State:
  BEARER_WAIT: 30
  ESTABLISHED: 18561
  Total: 18591

```

```

user@host> show services mobile-edge sessions
  Session-address: 23.0.21.163 State: ESTABLISHED Num-bearers: 1
    VRF-ID: 0x0 APN: default
    CPF-peer: 10.0.0.2 Access-peer: 20.0.0.2
    Anchor-PFE: apfe0:pfe-1/0/0 Secondary-anchor-PFE: apfe0:pfe-2/1/0
    Local-SEID: 0x20015a2 Remote-SEID: 0x3cb2

  Session-address: 23.0.47.237 State: ESTABLISHED Num-bearers: 1
    VRF-ID: 0x0 APN: default
    CPF-peer: 10.0.0.2 Access-peer: 20.0.0.2
    Anchor-PFE: apfe0:pfe-1/0/0 Secondary-anchor-PFE: apfe0:pfe-2/1/0
    Local-SEID: 0x2fec Remote-SEID: 0x56fc

  Session-address: 23.0.21.49 State: ESTABLISHED Num-bearers: 1
    VRF-ID: 0x0 APN: default
    CPF-peer: 10.0.0.2 Access-peer: 20.0.0.2
    Anchor-PFE: apfe0:pfe-1/0/0 Secondary-anchor-PFE: apfe0:pfe-2/1/0
    Local-SEID: 0x1531 Remote-SEID: 0x3c40

  Session-address: 23.0.29.83 State: ESTABLISHED Num-bearers: 1
    VRF-ID: 0x0 APN: default
    CPF-peer: 10.0.0.2 Access-peer: 20.0.0.2
    Anchor-PFE: apfe0:pfe-1/0/0 Secondary-anchor-PFE: apfe0:pfe-2/1/0
    Local-SEID: 0x2001d53 Remote-SEID: 0x4462

  ....

```

Release History Table

Release	Description
21.3R1	Starting in Junos OS Release 21.3R1, Junos Multi-Access User Plane provides a long-route implementation as a replacement for a filter-based implementation to steer traffic to the anchor Packet Forwarding Engine removing the need for a firewall filter to route GTP packets.

RELATED DOCUMENTATION

[Anchor PFEs and Redundancy in Junos Multi-Access User Plane | 51](#)

[MX Series Router As Junos Multi-Access User Plane | 41](#)

Example: Configure GBR Forwarding on Junos Multi-Access User Plane

IN THIS SECTION

- [Overview | 71](#)
- [Requirements | 73](#)
- [Configuration | 73](#)
- [Verification | 78](#)

Overview

This example shows how to configure GBR and best-effort forwarding on the Junos Multi-Access User Plane. GBR queues enable you to prioritize traffic. You can also guarantee a minimum bandwidth for GBR traffic.

Junos OS handles subscriber traffic differently depending on the Transport Level Marking (TLM) assigned to it. The TLM contains a DSCP value, which classifiers use to map the traffic to the appropriate forwarding class. Each forwarding class is associated with an output queue on the VRF loopback interface of the anchor Packet Forwarding Engine.

We support eight queues on the VRF interface, of which four are GBR queues and four are best-effort queues. These queues are preconfigured with a fixed set of attributes. You cannot modify the queue configurations.

Table 3: Forwarding Queues on the VRF Loopback Interface

Queue Number	Queue Name	Description
0	be-low-0	Best effort queue with lowest priority
1	be-low-1	Best effort queue with low to medium priority
2	be-high-0	Best effort queue with medium to high priority
3	be-high-1	Best effort queue with highest priority
4	gbr-low	GBR queue with low priority
5	gbr-med	GBR queue with medium priority
6	gbr-high	GBR queue with high priority
7	express	GBR queue with highest priority



CAUTION: Make sure that you map the forwarding classes to the correct queues. You can use different names for the forwarding classes, but you must map the queues correctly.

If the TLM provided for a new or modified GBR bearer or flow maps to a non-GBR queue, the system rejects the session establishment or modification. Make sure that the TLM configurations for the control plane and user plane are consistent.

In this example, we define eight forwarding classes and map the classes to the VRF queues. We define a classifier, `upf-class-1`, and configure the forwarding classes, their PLP values, and the applicable DSCP values. We define another classifier called `upf-class-2` and configure the default mapping for DSCP. We add these classifiers to peer routing instances associated with the outgoing interfaces on the gateway `upf`. Classifier `upf-class-1` handles traffic for routing instances `4g-access` and `4g-core`. Classifier `upf-class-2` handles traffic for all other routing instances. You can optionally define the fraction of the system bandwidth reserved for GBR queues.

Requirements

This example uses the following hardware and software components:

- MX480 (can also be MX240, MX960) router configured as an SAEGW-U or a UPF
- Junos OS Releases 22.2R1 or later

Configuration

IN THIS SECTION

- [CLI Quick Configuration | 73](#)
- [Step-By-Step Procedure | 75](#)
- [Results | 76](#)

CLI Quick Configuration

To quickly configure this example, copy the following commands and paste them into a text file. Remove any line breaks, and change any details necessary to match your network configuration. Copy and paste the commands into the CLI at the [edit] hierarchy level.

```
set class-of-service forwarding-classes class be-low-0 queue-num 0
set class-of-service forwarding-classes class be-low-1 queue-num 1
set class-of-service forwarding-classes class be-high-0 queue-num 2
set class-of-service forwarding-classes class be-high-1 queue-num 3
set class-of-service forwarding-classes class gbr-low queue-num 4
set class-of-service forwarding-classes class gbr-med queue-num 5
set class-of-service forwarding-classes class gbr-high queue-num 6
set class-of-service forwarding-classes class express queue-num 7
set class-of-service classifiers dscp upf-class-1 import default
set class-of-service classifiers dscp upf-class-1 forwarding-class be-high-0 loss-priority low
code-points cs1
set class-of-service classifiers dscp upf-class-1 forwarding-class be-high-0 loss-priority low
code-points cs2
```

```

set class-of-service classifiers dscp upf-class-1 forwarding-class be-high-0 loss-priority low
code-points cs3
set class-of-service classifiers dscp upf-class-1 forwarding-class be-high-0 loss-priority low
code-points cs4
set class-of-service classifiers dscp upf-class-1 forwarding-class be-high-0 loss-priority low
code-points cs5
set class-of-service classifiers dscp upf-class-1 forwarding-class be-high-1 loss-priority
medium-low code-points nc1
set class-of-service classifiers dscp upf-class-1 forwarding-class be-low-0 loss-priority medium-
high code-points be
set class-of-service classifiers dscp upf-class-1 forwarding-class be-low-1 loss-priority high
code-points nc2
set class-of-service classifiers dscp upf-class-1 forwarding-class express loss-priority high
code-points ef
set class-of-service classifiers dscp upf-class-1 forwarding-class gbr-high loss-priority low
code-points af11
set class-of-service classifiers dscp upf-class-1 forwarding-class gbr-high loss-priority low
code-points af12
set class-of-service classifiers dscp upf-class-1 forwarding-class gbr-high loss-priority low
code-points af13
set class-of-service classifiers dscp upf-class-1 forwarding-class gbr-low loss-priority medium-
high code-points af31
set class-of-service classifiers dscp upf-class-1 forwarding-class gbr-low loss-priority medium-
high code-points af32
set class-of-service classifiers dscp upf-class-1 forwarding-class gbr-low loss-priority medium-
high code-points af33
set class-of-service classifiers dscp upf-class-1 forwarding-class gbr-low loss-priority medium-
high code-points af41
set class-of-service classifiers dscp upf-class-1 forwarding-class gbr-low loss-priority medium-
high code-points af42
set class-of-service classifiers dscp upf-class-1 forwarding-class gbr-low loss-priority medium-
high code-points af43
set class-of-service classifiers dscp upf-class-1 forwarding-class gbr-med loss-priority medium-
low code-points af21
set class-of-service classifiers dscp upf-class-1 forwarding-class gbr-med loss-priority medium-
low code-points af22
set class-of-service classifiers dscp upf-class-1 forwarding-class gbr-med loss-priority medium-
low code-points af23
set services mobile-edge gateways saegw upf system class-of-service downlink-dscp-to-forwarding-
class classifier upf-class-1 routing-instance 4g-access
set services mobile-edge gateways saegw upf system class-of-service downlink-dscp-to-forwarding-
class classifier upf-class-1 routing-instance 4g-core
set services mobile-edge gateways saegw upf system class-of-service downlink-dscp-to-forwarding-

```



```

class classifier upf-class-2
set services mobile-edge gateways saegw upf system class-of-service reserved-bandwidth express 2
set services mobile-edge gateways saegw upf system class-of-service reserved-bandwidth gbr 10

```

Step-By-Step Procedure

To configure GBR and best-effort forwarding, follow the steps below:

1. Define eight forwarding classes and map them to the output queues on the VRF loopback interface.

```

[edit class-of-service forwarding-classes]
user@host# set class be-low-0 queue-num 0
user@host# set class be-low-1 queue-num 1
user@host# set class be-high-0 queue-num 2
user@host# set class be-high-1 queue-num 3
user@host# set class gbr-low queue-num 4
user@host# set class gbr-med queue-num 5
user@host# set class gbr-high queue-num 6
user@host# set class express queue-num 7

```

2. Define and configure the classifiers that will map the DSCP values to the forwarding classes. You can configure the forwarding class, the PLP value, and the DSCP values that the classifier applies to.

```

[edit class-of-service]
user@host# set classifiers dscp upf-class-1
user@host# set classifiers dscp upf-class-2

[edit class-of-service classifiers dscp upf-class-1]
user@host# set import default
user@host# set forwarding-class be-high-0 loss-priority low code-points [ cs1 cs2 cs3 cs4 cs5 ]
user@host# set forwarding-class be-high-1 loss-priority medium-low code-points nc1
user@host# set forwarding-class be-low-0 loss-priority medium-high code-points be
user@host# set forwarding-class be-low-1 loss-priority high code-points nc2
user@host# set forwarding-class express loss-priority high code-points ef
user@host# set forwarding-class gbr-high loss-priority low code-points [ af11 af12 af13 ]
user@host# set forwarding-class gbr-low loss-priority medium-high code-points [ af31 af32 af33 af41 af42 af43 ]
user@host# set forwarding-class gbr-med loss-priority medium-low code-points [ af21 af22 af23 ]

```

```
[edit class-of-service classifiers dscp upf-class-2]
user@host# set import default
```

3. Assign the classifiers to routing instances associated with the outgoing interfaces. If you do not assign any routing instance to a classifier, the system uses the classifier for all routing instances without an assigned classifier.

```
[edit services mobile-edge gateways saegw upf system class-of-service downlink-dscp-to-forwarding-class]
user@host# set classifier upf-class-1 routing-instance 4g-access
user@host# set classifier upf-class-1 routing-instance 4g-core
user@host# set classifier upf-class-2
```

4. (Optional) Reserve a percentage of the total bandwidth for the express and GBR queues. The system reserves the same percentage of bandwidth across all anchor Packet Forwarding Engines.

```
[edit services mobile-edge gateways saegw upf system class-of-service reserved-bandwidth]
user@host# set express 2
user@host# set gbr 10
```

Results

From configuration mode, confirm your configuration by entering the `show services` and `show class-of-service` commands. If the output does not display the intended configuration, repeat the instructions in this example to correct the configuration.

```
user@host# show class-of-service
forwarding-classes {
    class be-high-0 queue-num 2;
    class be-high-1 queue-num 3;
    class be-low-0 queue-num 0;
    class be-low-1 queue-num 1;
    class express queue-num 7;
    class gbr-high queue-num 6;
    class gbr-low queue-num 4;
    class gbr-med queue-num 5;
}
classifiers {
    dscp upf-class-1 {
```

```

import default;
forwarding-class be-high-0 {
    loss-priority low code-points [ cs1 cs2 cs3 cs4 cs5 ];
}
forwarding-class be-high-1 {
    loss-priority medium-low code-points nc1;
}
forwarding-class be-low-0 {
    loss-priority medium-high code-points nc2;
}
forwarding-class be-low-1 {
    loss-priority high code-points be;
}
forwarding-class express {
    loss-priority high code-points ef;
}
forwarding-class gbr-high {
    loss-priority low code-points [ af11 af12 af13 ];
}
forwarding-class gbr-low {
    loss-priority medium-high code-points [ af31 af32 af33 af41 af42 af43 ];
}
forwarding-class gbr-med {
    loss-priority medium-low code-points [ af21 af22 af23 ];
}
}
dscp upf-class-2 {
    import default;
}
}

```

```

user@host# show services
mobile-edge {
    gateways {
        saegw upf {
            system {
                class-of-service {
                    downlink-dscp-to-forwarding-class {
                        classifier upf-class-2;
                        classifier upf-class-1 {
                            routing-instance 4g-access;
                        }
                    }
                }
            }
        }
    }
}

```

IN THIS SECTION

- Use various `show` commands to verify that the GBR forwarding is functioning properly.

IN THIS SECTION

- ## Purpose

Display the configuration of the forwarding queues and verify that the system reserves bandwidth for the GBR queues.

Action

At the CLI, enter the `show services mobile-edge anchor class-of-service` command.

```
user@host> show services mobile-edge anchor class-of-service
```

Downlink forwarding queues/classes of service:

Queue 0 (BE-LOW-0)

Guaranteed priority: low
Excess priority: low
Reserved Bandwidth: 0 %
Weight: 10

Queue 1 (BE-LOW-1)

Guaranteed priority: low
Excess priority: low
Reserved Bandwidth: 0 %
Weight: 20

Queue 2 (BE-HIGH-0)

Guaranteed priority: low
Excess priority: high
Reserved Bandwidth: 0 %
Weight: 20

Queue 3 (BE-HIGH-1)

Guaranteed priority: low
Excess priority: high
Reserved Bandwidth: 0 %
Weight: 50

Queue 4 (GBR-LOW)

Guaranteed priority: low
Excess priority: low
Reserved Bandwidth: 10 %
Weight: 0

Queue 5 (GBR-MEDIUM)

Guaranteed priority: medium-high
Excess priority: low
Reserved Bandwidth: 10 %
Weight: 0

Queue 6 (GBR-HIGH)

Guaranteed priority: high
 Excess priority: low
 Reserved Bandwidth: 10 %
 Weight: 0

Queue 7 (EXPRESS)

Guaranteed priority: strict-high
 Excess priority: low
 Reserved Bandwidth: 2 %
 Weight: 0

Verify GBR and Non-GBR Flows

IN THIS SECTION

- Purpose | 80
- Action | 80

Purpose

Verify that the system classifies traffic into GBR and non-GBR bearers or flows.

Action

At the CLI, enter the `show services mobile-edge sessions summary` command.

```
user@host> show services mobile-edge sessions summary
```

```
Sessions by State:
```

```
ESTABLISHED: 2000
```

```
Total: 2000
```

```
Bearers by State:
```

```
ESTABLISHED: 2000
```

```
Total: 2000
```

```
Bearers by Downlink FAR State:
```

```
FORWARD: 2000
```

Total: 2000

Bearer by Resource Type:

Non-GBR: 2000

Total: 2000

5G QoS Flows by State:

ESTABLISHED: 4000

Total: 4000

5G QoS Flows by Resource Type:

GBR: 2000

Non-GBR: 2000

Total: 4000

3

CHAPTER

Configuration Statements

[apn-services \(control plane services\) | 83](#)
[class-of-service \(saegw system\) | 84](#)
[destination \(saegw system\) | 86](#)
[downlink-dscp-to-forwarding-class | 88](#)
[downlink-dscp-to-egress-forwarding-class | 89](#)
[forwarding-packages | 91](#)
[mobility | 92](#)
[peer-groups \(access network peers\) | 94](#)
[peer-groups \(control plane peers\) | 96](#)
[peer-groups \(core network peers\) | 99](#)
[reserved-bandwidth | 101](#)
[saegw | 102](#)
[saegw access-network-peers | 104](#)
[saegw control-plane-peers | 107](#)
[saegw-core-network-peers | 110](#)
[saegw system | 112](#)
[service-mode | 114](#)

apn-services (control plane services)

IN THIS SECTION

- [Syntax | 83](#)
- [Hierarchy Level | 83](#)
- [Description | 83](#)
- [Options | 84](#)
- [Required Privilege Level | 84](#)
- [Release Information | 84](#)

Syntax

```
apn-services {  
    apns name {  
        mobile-interface mobile-interface;  
    }  
}
```

Hierarchy Level

```
[edit services mobile-edge gateways saegw name control-plane-peers]
```

Description

The access point name (APN) is sent by the control plane over PFCP to place a subscriber in a specific network instance.

Options

apn name At least one access point name.

Required Privilege Level

system

Release Information

Statement introduced in Junos OS Release 19.4R1.

class-of-service (saegw system)

IN THIS SECTION

- [Syntax | 84](#)
- [Hierarchy Level | 85](#)
- [Description | 85](#)
- [Required Privilege Level | 85](#)
- [Release Information | 85](#)

Syntax

```
class-of-service {  
    reserved-bandwidth {  
        express percentage;  
        gbr percentage;
```

```

    }
    downlink-dscp-to-forwarding-class {
        classifier classifier-name;
        classifier classifier-name {
            routing-instance instance-name;
        }
    }
}

```

Hierarchy Level

```
[edit services mobile-edge gateways saegw system]
```

Description

Configure class-of-service features on Junos Multi-Access User Plane.

See [CLI Explorer](#) for the remaining statements.

Required Privilege Level

system

Release Information

Juniper Networks introduced this statement in Junos OS Release 22.2R1.

destination (saegw system)

IN THIS SECTION

- [Syntax | 86](#)
- [Hierarchy Level | 86](#)
- [Description | 86](#)
- [Options | 87](#)
- [Required Privilege Level | 87](#)
- [Release Information | 87](#)

Syntax

```
destination {  
    peer-address address;  
    port port-number;  
    routing-instance instance-name;  
    source-address address;  
}
```

Hierarchy Level

```
[edit services mobile-edge gateways saegw system]
```

Description

Configure the destination address of the IPsec peer or content of communication point of aggregation (CC-PAG) peer on the user plane for lawful intercept data. The control plane provides the address of the

Mediation and Delivery Function (MDF), but it might not provide the address of the IPsec peer, which you need to configure. This configuration is applicable to both 4G and 5G.

NOTE: Currently, this configuration supports only IPv4 addresses.

If you configure the peer address, you must also configure the source address because you must define both endpoints of the IPsec tunnel. You can configure the routing instance independent of the source and peer address.

A change in the configuration takes effect only when the control plane deactivates and reactivates the lawful intercept task. Existing tasks maintain their original CLI-configured values.

Options

<code>peer-address <i>address</i></code>	Address of the IPsec peer.
<code>port <i>port-number</i></code>	TCP/UDP port number of the IPsec peer.
<code>routing-instance <i>instance-name</i></code>	Name of the routing instance.
<code>source-address <i>address</i></code>	Address of the user plane (SAEGW-U or UPF).

Required Privilege Level

system

Release Information

Juniper Networks introduced this statement in Junos OS Release 22.2R1

RELATED DOCUMENTATION

| [Lawful Intercept on Junos Multi-Access User Plane](#) | 29

downlink-dscp-to-forwarding-class

IN THIS SECTION

- [Syntax | 88](#)
- [Hierarchy Level | 88](#)
- [Description | 88](#)
- [Required Privilege Level | 89](#)
- [Release Information | 89](#)

Syntax

```
downlink-dscp-to-forwarding-class {  
    classifier classifier-name;  
    classifier classifier-name {  
        routing-instance instance-name;  
    }  
}
```

Hierarchy Level

```
[edit services mobile-edge gateways saegw system class-of-service]
```

Description

Assign the classifiers to use for mapping the DiffServ code point (DSCP) value provided in the Transport Level Marking to the forwarding queues.

The DSCP value is relevant in the context of the routing instance associated with the outgoing interface. Therefore, you need to assign classifiers to peer routing instances. If you do not assign any routing instance to a classifier, the system uses the classifier for all routing instances without an assigned classifier.

See [CLI Explorer](#) for the remaining statements.

Required Privilege Level

system

Release Information

Juniper Networks introduced this statement in Junos OS Release 22.2R1.

downlink-dscp-to-egress-forwarding-class

IN THIS SECTION

- [Syntax | 89](#)
- [Hierarchy Level | 90](#)
- [Description | 90](#)
- [Required Privilege Level | 90](#)
- [Release Information | 90](#)

Syntax

```
downlink-dscp-to-egress-forwarding-class {  
  classifier classifier-name;  
  classifier classifier-name {
```

```

        routing-instance instance-name;
    }
}

```

Hierarchy Level

```
[edit services mobile-edge gateways saegw system class-of-service]
```

Description

You will use these classifiers to map DiffServ code point (DSCP) values provided in Transport Level Marking (TLM) to specific forwarding/egress classes on the WAN interface.

The Egress Forwarding Class will be assigned to the Service Data Flow (SDF). All packets matching that SDF inherit the forwarding class. If the Egress Forwarding Class is not assigned to the SDF, the forwarding class assigned by the ingress WAN classifier will be used.

To assign Egress Forwarding Classes to an SDF, Transport Level Marking (TLM) must be provided. If the Forwarding Action (FAR) does not include TLM, the Egress Forwarding Class will not be assigned.

Required Privilege Level

system

Release Information

This statement was introduced in Junos OS Release 23.1R1.

forwarding-packages

IN THIS SECTION

- [Syntax | 91](#)
- [Hierarchy Level | 91](#)
- [Description | 91](#)
- [Required Privilege Level | 92](#)
- [Release Information | 92](#)

Syntax

```
forwarding-packages {  
    mobility{  
        user-plane;  
        sgw;  
    }  
}
```

Hierarchy Level

```
[edit chassis fpc fpc-slot pfe pfe-id]
```

Description

Configure the Packet Forwarding Engine so that it can be used to anchor mobile sessions. If this configuration is changed, then the FPC reboots.

The forwarding-packages statement can be configured at the Packet Forwarding Engine level. Therefore, you can configure a subset of Packet Forwarding Engines in an FPC to be mobile anchors.

The remaining statements are explained separately.

Required Privilege Level

interface—To view this statement in the configuration.

interface-control—To add this statement to the configuration.

Release Information

Statement introduced for Junos Multi-Access User Plane in Junos OS Release 19.4R1.

mobility

IN THIS SECTION

- [Syntax | 92](#)
- [Hierarchy Level | 93](#)
- [Description | 93](#)
- [Options | 93](#)
- [Required Privilege Level | 94](#)
- [Release Information | 94](#)

Syntax

```
mobility {  
    user-plane;
```

```
sgw;

}
```

Hierarchy Level

```
[edit chassis fpc fpc-slot pfe pfe-id forwarding-packages]
```

Description

Specify the forwarding package that the Packet Forwarding Engines associated with mobility must use.

NOTE:

- You must include every Packet Forwarding Engine configured with the user-plane forwarding package at the [edit unified-edge gateways user-plane *gateway-name* system anchor-pfes] hierarchy level on the broadband gateway. If you do not specify the Packet Forwarding Engine as an anchor interface, then the Packet Forwarding Engine will not be used by the broadband gateway.
- You must include every Packet Forwarding Engine configured with the sgw forwarding package at the [edit unified-edge gateways sgw *gateway-name* system anchor-pfes] hierarchy level on the broadband gateway. If you do not specify the Packet Forwarding Engine as an anchor interface, then the Packet Forwarding Engine will not be used by the broadband gateway.

Options

user-plane Configure the router as a gateway GPRS support node (GGSN) or as a Packet Data Network Gateway (P-GW) or as an SAEGW-U.

sgw Configure the router as a Serving Gateway (S-GW).

Required Privilege Level

interface—To view this statement in the configuration.

interface-control—To add this statement to the configuration.

Release Information

Statement introduced for Junos Multi-Access User Plane in Junos OS Release 19.4R1.

ggsn-pgw option deprecated and replaced with user-plane option in Junos OS Release 20.4R1.

RELATED DOCUMENTATION

| [forwarding-packages](#) | 91

peer-groups (access network peers)

IN THIS SECTION

- [Syntax](#) | 95
- [Hierarchy Level](#) | 95
- [Description](#) | 95
- [Options](#) | 95
- [Required Privilege Level](#) | 96
- [Release Information](#) | 96

Syntax

```
peer-groups name {
  peer {
    address [ address ... ];
    hostname hostname;
  }
  routing-instance routing-instance;
}
```

Hierarchy Level

```
[edit services mobile-edge gateways saegw name access-network-peers]
```

Description

Define a group of eNodeBs for an SAEGW-U or SGW-U.

Options

name	Peer group name.
peer	IPv4 address or prefix value (required) of the GTP-U peer and hostname (optional) of the GTP-U peer.

NOTE: The maximum number of peers that can appear in a peer group is 4000.

routing-instance	Routing-instance of a GTP-U peer.
-------------------------	-----------------------------------

NOTE: If at least one peer group is used, eNodeBs matching only this address/prefix are accepted by the user plane function during session establishment. The eNodeB is bound to the routing instance within the peer-groups stanza, if available. Otherwise, the user plane function uses the routing instance under "[access-network-peers](#)" on [page 104](#).

The remaining statements are explained separately. See [CLI Explorer](#).

Required Privilege Level

system

Release Information

Statement introduced in Junos OS Release 19.4R1.

peer-groups (control plane peers)

IN THIS SECTION

- [Syntax | 97](#)
- [Hierarchy Level | 97](#)
- [Description | 97](#)
- [Options | 97](#)
- [Required Privilege Level | 98](#)
- [Release Information | 98](#)

Syntax

```
peer-groups name {
    heartbeat-interval seconds;
    n3-requests n3-requests;
    path-management (disable | enable);
    peer {
        address [ address ... ];
        hostname hostname;
    }
    routing-instance routing-instance;
    t3-response seconds;
}
```

Hierarchy Level

```
[edit services mobile-edge gateways saegw name control-plane-peers]
```

Description

If at least one peer group is configured, PFCP packets from control plane peers matching this address/prefix alone are accepted. The control plane peers are bound to the routing instance defined within this peer group, if configured. Otherwise the control plane function is bound to the routing instance listed under ["control-plane-peers" on page 107](#).

Options

- | | |
|---------------------------|---|
| name | Peer group name |
| heartbeat-interval | Time between origination of two successive heartbeat requests (seconds). <ul style="list-style-type: none"> • Range: 60 through 255 |

	<ul style="list-style-type: none"> • Default: 60
n3-requests	<p>Maximim number of retries of PFCP request messages upon t3-response timeout.</p> <ul style="list-style-type: none"> • Range: 1 through 5 • Default: 3
path-management	<p>Enable/disable origination of heartbeat message requests to control peers.</p> <ul style="list-style-type: none"> • Default: Disabled
peer	<p>IPv4 or IPv6 address or prefix value (required) of the PFCP peer and hostname (optional) of the PFCP peer.</p>
routing-instance	<p>Local routing instance of the PFCP peer.</p>
t3-response	<p>Waiting time of gateway before retrying a PFCP signaling-request upon response timeout (seconds).</p> <ul style="list-style-type: none"> • Range: 1 through 5 • Default: 5

The remaining statements are explained separately. See [CLI Explorer](#).

Required Privilege Level

system

Release Information

Statement introduced in Junos OS Release 19.4R1.

peer-groups (core network peers)

IN THIS SECTION

- [Syntax | 99](#)
- [Hierarchy Level | 99](#)
- [Description | 99](#)
- [Options | 100](#)
- [Required Privilege Level | 100](#)
- [Release Information | 100](#)

Syntax

```
peer-groups name {  
    peer {  
        address [ address ... ];  
        hostname hostname;  
    }  
    routing-instance routing-instance;  
}
```

Hierarchy Level

```
[edit services mobile-edge gateways saegw name core-network-peers]
```

Description

Define a peer group of PGW-Us for an SGW-U or a group of SGW-Us for a PGW-U.

Options

name	Peer group name.
peer	IPv4 address or prefix value (required) of the GTP-U peer and hostname (optional) of the GTP-U peer.

NOTE: The maximum number of peers that can appear in a peer group is 4000.

routing-instance	Routing-instance of a GTP-U peer.
-------------------------	-----------------------------------

NOTE: If at least one peer group is used, peers matching only this address/prefix are accepted by the user plane function during session establishment. The peer is bound to the routing instance within the peer-groups stanza, if available. Otherwise, the user plane function uses the routing instance under "[saegw-core-network-peers](#)" on page 110.

The remaining statements are explained separately. See [CLI Explorer](#).

Required Privilege Level

system

Release Information

Statement introduced in Junos OS Release 20.4R1.

reserved-bandwidth

IN THIS SECTION

- [Syntax | 101](#)
- [Hierarchy Level | 101](#)
- [Description | 101](#)
- [Options | 102](#)
- [Required Privilege Level | 102](#)
- [Release Information | 102](#)

Syntax

```
reserved-bandwidth {  
    express percentage;  
    gbr percentage;  
}
```

Hierarchy Level

```
[edit services mobile-edge gateways saegw system class-of-service]
```

Description

Reserve a fraction of the system's bandwidth for the express and guaranteed bit rate forwarding queues on the virtual routing and forwarding loopback interface on the anchor Packet Forwarding Engine. The system reserves the same fraction of bandwidth across all anchor Packet Forwarding Engines.

This configuration does not affect any bandwidth reservations on any of the WAN ports on any of the Packet Forwarding Engines (including the anchor Packet Forwarding Engines) in the system.

Options

express percentage

Specify the percentage of bandwidth to be reserved for the express queue.

- Range: 1 through 100
- Default: 2

gbr percentage

Specify the percentage of bandwidth to be reserved for each guaranteed bit rate queue.

- Range: 1 through 100
- Default: 5

Required Privilege Level

system

Release Information

Juniper Networks introduced this statement in Junos OS Release 22.2R1.

saegw

IN THIS SECTION

- [Syntax | 103](#)
- [Hierarchy Level | 103](#)

- [Description | 103](#)
- [Options | 104](#)
- [Required Privilege Level | 104](#)
- [Release Information | 104](#)

Syntax

```
saegw name {  
    access-network-peers {  
        ...}  
    control-plane-peers {  
        ...}  
    core-network-peers {  
        ...}  
    system {  
        ...}  
}
```

Hierarchy Level

```
[edit services mobile-edge gateways]
```

Description

Define the gateway name.

NOTE: Only a single instance of the gateway can be defined on the MX Series router.

Options

name Gateway name

The remaining statements are explained separately. See [CLI Explorer](#).

Required Privilege Level

system

Release Information

Statement introduced in Junos OS Release 19.4R1.

core-network-peers option introduced in Junos OS Release 20.4R1.

saegw access-network-peers

IN THIS SECTION

- [Syntax | 105](#)
- [Hierarchy Level | 105](#)
- [Description | 105](#)
- [Options | 105](#)
- [Required Privilege Level | 106](#)
- [Release Information | 106](#)

Syntax

```
access-network-peers {
  local-address [ local-address ... ];
  n3-requests n3-requests;
  peer-groups name {
    peer {
      address [ address ... ];
      hostname hostname;
    }
    routing-instance routing-instance;
  }
  routing-instance routing-instance;
  t3-response seconds;
}
```

Hierarchy Level

```
[edit services mobile-edge gateways saegw]
```

Description

Use this section to define the connection to and characteristics of data plane peers.

Options

local-address Required. IPv4 address(es) of the local end of the GTP-U connection.

NOTE: There is no limit to the number of data plane peers that can connect to the SAEGW-U.

n3-requests Number of retries of peer management request messages upon t3-response timeout.

- **Range:** 1 through 5
- **Default:** 3

routing-instance Local routing instance of the GTP-U connection.

NOTE: If at least one peer group is used, eNodeBs matching only the peer group address/prefix are accepted by the SAEGW-U/SGW-U during session establishment. The eNodeB is bound to the routing instance within the "[peer-groups](#)" on [page 94](#) stanza, if available. Otherwise, the SAEGW-U/SGW-U uses the routing instance provided here.

t3-response Waiting time before retrying peer management request upon response timeout (seconds).

- **Range:** 1 through 5
- **Default:** 5

The remaining statements are explained separately. See [CLI Explorer](#).

Required Privilege Level

system

Release Information

Statement introduced in Junos OS Release 19.4R1.

RELATED DOCUMENTATION

[saegw control-plane-peers](#) | [107](#)

[saegw-core-network-peers](#) | [110](#)

saegw control-plane-peers

IN THIS SECTION

- [Syntax | 107](#)
- [Hierarchy Level | 108](#)
- [Description | 108](#)
- [Options | 108](#)
- [Required Privilege Level | 109](#)
- [Release Information | 110](#)

Syntax

```
control-plane-peers {
  apn-services {
    apns name {
      mobile-interface mobile-interface;
    }
  }
  heartbeat-interval seconds;
  local-address [ local-address ... ];
  n3-requests n3-requests;
  path-management (disable | enable);
  peer-groups name {
    heartbeat-interval seconds;
    initiate-association;
    n3-requests n3-requests;
    path-management (disable | enable);
    peer {
      address [ address ... ];
      hostname hostname;
    }
    routing-instance routing-instance;
    t3-response seconds;
  }
}
```

```

response-cache-timeout seconds;
routing-instance routing-instance;
t3-response seconds;
}

```

Hierarchy Level

```
[edit services mobile-edge gateways saegw]
```

Description

Use this section to define the connection to and characteristics of control plane peers (SAEGW-C, SGW-C, or PGW-C).

Options

heartbeat-interval

Time between two successive heartbeat requests (seconds).

- **Range:** 60 through 255
- **Default:** 60

local-address

Required. IPv6 or IPv4 or both addresses of the local end of the PFCP connection.

NOTE: If you are connecting to multiple control plane peers, define the local address under the control-plane-peers stanza for each control plane peer rather than define a single loopback address.

n3-requests

Maximim number of retries of PFCP request messages upon t3-response timeout.

- **Range:** 1 through 5
- **Default:** 3

path-management	<p>Enable/disable origination of heartbeat message requests to control peers.</p> <ul style="list-style-type: none"> • Default: Disabled
response-cache-timeout	<p>Configure the timeout for the PFCP response cache (seconds).</p> <ul style="list-style-type: none"> • Range: 0 through 255 • Default: 0
routing-instance	<p>Local routing instance of the PFCP. This is used to determine in which routing instance the responses are to be sent for incoming PFCP messages. If a routing instance is not configured:</p> <ul style="list-style-type: none"> • Only PFCP messages coming from control plane peers over the default routing instance are handled. • PFCP responses are only sent in the default routing instance. • PFCP messages coming over any other routing instance are dropped even if the destination address matches the defined <code>local-address</code>. <p>If a single routing instance is configured:</p> <ul style="list-style-type: none"> • Only PFCP messages coming from control plane peers over the configured routing instance are handled. • PFCP responses are only sent through this routing instance. • PFCP messages coming over any other routing instance are dropped.
t3-response	<p>Waiting time of gateway before retrying a PFCP signaling-request upon response timeout (seconds).</p> <ul style="list-style-type: none"> • Range: 1 through 5 • Default: 5

The remaining statements are explained separately. See [CLI Explorer](#).

Required Privilege Level

system

Release Information

Statement introduced in Junos OS Release 19.4R1.

RELATED DOCUMENTATION

[saegw access-network-peers](#) | 104

[saegw-core-network-peers](#) | 110

saegw-core-network-peers

IN THIS SECTION

- [Syntax](#) | 110
- [Hierarchy Level](#) | 111
- [Description](#) | 111
- [Options](#) | 111
- [Required Privilege Level](#) | 112
- [Release Information](#) | 112

Syntax

```
core-network-peers {
  echo-interval seconds;
  local-address [ local-address ... ];
  n3-requests n3-requests;
  path-management (disable | enable);
  peer-groups name {
    peer {
      address [ address ... ];
      hostname hostname;
```

```

    }
    routing-instance routing-instance;
  }
  routing-instance routing-instance;
  t3-response seconds;
}

```

Hierarchy Level

```
[edit services mobile-edge gateways saegw]
```

Description

Define core-facing GTP-U peers (SGW-U to PGW-U and vice versa).

Options

echo-interval	Time between origination of two successive echo requests (seconds). You must enable path-management for echo requests to occur. <ul style="list-style-type: none"> • Range: 60 through 255 • Default: 60
local-address	Required. IPv4 address(es) of the local end of the GTP-U connection.
n3-requests	Number of retries of peer management request messages upon t3-response timeout. <ul style="list-style-type: none"> • Range: 1 through 5 • Default: 3
path-management	Enable/disable origination of echo requests to core peers. <ul style="list-style-type: none"> • Default: Disabled

- routing-instance** Local routing instance of the GTP-U connection.
- t3-response** Waiting time before retrying peer management request upon response timeout (seconds).
- **Range:** 1 through 5
 - **Default:** 5

The remaining statements are explained separately. See [CLI Explorer](#).

Required Privilege Level

system

Release Information

Statement introduced in Junos OS Release 20.4R1.

RELATED DOCUMENTATION

[saegw access-network-peers](#) | 104

[saegw control-plane-peers](#) | 107

saegw system

IN THIS SECTION

- [Syntax](#) | 113
- [Hierarchy Level](#) | 113
- [Description](#) | 113
- [Options](#) | 114

- Required Privilege Level | 114
- Release Information | 114

Syntax

```
system {  
  anchor-pfes {  
    interface interface-name {  
      colocated-4g-pgw;  
      colocated-4g-sgw;  
    }  
  }  
  class-of-service {  
    ... }  
  destination {  
    ... }  
  service-mode {  
    ... }  
}
```

Hierarchy Level

```
[edit services mobile-edge gateways saegw]
```

Description

Define the anchor PFEs for the SAEGW-U. The anchor PFEs are the line cards where the GTP-U data packets from [access-network-peers](#) are decapsulated and sent towards the SGi interface to the core network. Similarly, packets from the SGi interface are encapsulated in GTP-U by the anchor PFEs and sent towards the RAN.

Options

- anchor-pfes** Define the anchor PFEs by providing their interface names.
- **Syntax:** interface *interface-name*
- colocated-4g-pgw** (Optional) Attach the PGW-U gateway type to the anchor PFE to optimize throughput of 4G traffic.
- colocated-4g-sgw** (Optional) Attach the SGW-U gateway type to the anchor PFE to optimize throughput of 4G traffic.

The remaining statements are explained separately. See [CLI Explorer](#).

Required Privilege Level

system

Release Information

Statement introduced in Junos OS Release 19.4R1.

colocated-4g-pgw and colocated-4g-sgw options introduced in Junos OS Release 21.3R1.

class-of-service and destination options introduced in Junos OS Release 22.2R1.

service-mode maintenance options introduced in Junos OS Release 23.1R1.

service-mode

IN THIS SECTION

- [Syntax | 115](#)
- [Hierarchy Level | 115](#)
- [Description | 115](#)

- Required Privilege Level | 116
- Release Information | 116

Syntax

```
service-mode {  
    maintenance  
}  
}
```

Hierarchy Level

```
[edit services mobile-edge gateways saegw gateway-name system]
```

Description

Enter maintenance mode for SAEGW gateways. This makes your gateway inactive for new sessions, but traffic flow and existing sessions will continue uninterrupted. Critical session modify and session delete messages are also allowed in maintenance mode.

When you enter maintenance mode, a duration is set for the maintenance window. The maintenance window can be ended early with a new load control information (LCI) message. If maintenance mode is entered in response to an overload control information (OCI) message, the maintenance window must run for the specified duration in the OCI message.

If the load/overload feature is not enabled, a warning message will be displayed and the command will be rejected.

To enter maintenance mode, enter the following command:

```
user@host# set services mobile-edge gateways saegw gateway-name system service-mode maintenance
```

To leave maintenance mode, enter this command:

```
user@host# delete services mobile-edge gateways saegw gateway-name system service-mode  
maintenance
```

To end maintenance mode, use the delete command instead of the set command.

Required Privilege Level

system

Release Information

Juniper Networks released this statement in Junos OS Release 23.1R1.

4

CHAPTER

Operational Commands

`show services mobile-edge anchor class-of-service` | 118

`show services mobile-edge peers` | 121

`show services mobile-edge resources call-admission-control statistics` | 126

`show services mobile-edge sessions` | 128

`show services mobile-edge summary` | 148

show services mobile-edge anchor class-of-service

IN THIS SECTION

- [Syntax | 118](#)
- [Description | 118](#)
- [Required Privilege Level | 118](#)
- [Output Fields | 118](#)
- [Sample Output | 119](#)
- [Release Information | 120](#)

Syntax

```
show services mobile-edge anchor class-of-service
```

Description

This command displays information about the configuration of the downlink forwarding queues.

Required Privilege Level

view

Output Fields

[Table 4 on page 119](#) lists the output fields for the `show services mobile-edge anchor class-of-service` command.

Table 4: show services mobile-edge anchor class-of-service Output Fields

Field Name	Field Description
Excess priority	Best-effort priority level assigned to a given queue.
Guaranteed priority	Guaranteed bit-rate priority level assigned to a given queue.
Queue	Queue number and name.
Reserved bandwidth	Percentage of total bandwidth reserved for a given queue.
Weight	Importance assigned to each best-effort queue. This field is used to determine how often the system serves a queue.

Sample Output

show services mobile-edge anchor class-of-service

```
user@host> show services mobile-edge anchor class-of-service
```

```
Downlink forwarding queues/classes of service:
```

```
Queue 0 (BE-LOW-0)
```

```
    Guaranteed priority: low
```

```
    Excess priority:    low
```

```
    Reserved Bandwidth: 0 %
```

```
    Weight:             10
```

```
Queue 1 (BE-LOW-1)
```

```
    Guaranteed priority: low
```

```
    Excess priority:    low
```

```
    Reserved Bandwidth: 0 %
```

```
    Weight:             20
```

```
Queue 2 (BE-HIGH-0)
```

```
    Guaranteed priority: low
```

```
    Excess priority:    high
```

```
    Reserved Bandwidth: 0 %
```

```
    Weight:             20
```

```
Queue 3 (BE-HIGH-1)
  Guaranteed priority: low
  Excess priority:     high
  Reserved Bandwidth: 0 %
  Weight:              50

Queue 4 (GBR-LOW)
  Guaranteed priority: low
  Excess priority:     low
  Reserved Bandwidth: 30 %
  Weight:              0

Queue 5 (GBR-MEDIUM)
  Guaranteed priority: medium-high
  Excess priority:     low
  Reserved Bandwidth: 30 %
  Weight:              0

Queue 6 (GBR-HIGH)
  Guaranteed priority: high
  Excess priority:     low
  Reserved Bandwidth: 30 %
  Weight:              0

Queue 7 (EXPRESS)
  Guaranteed priority: strict-high
  Excess priority:     low
  Reserved Bandwidth: 10 %
  Weight:              0
```

Release Information

Juniper Networks introduced this command in Junos OS Release 22.2R1.

show services mobile-edge peers

IN THIS SECTION

- [Syntax | 121](#)
- [Description | 121](#)
- [Options | 121](#)
- [Required Privilege Level | 122](#)
- [Output Fields | 122](#)
- [Sample Output | 123](#)
- [Release Information | 125](#)

Syntax

```
show services mobile-edge peers  
<statistics>
```

Description

This command gives information on SAEGW-C and access network peers known to the SAEGW-U.

Options

- | | |
|-------------------|--|
| none | This command gives information on SAEGW-C and access network peers known to the SAEGW-U. |
| statistics | This command gives protocol statistics on SAEGW-C and access network peers known to the SAEGW-U. |

Required Privilege Level

view

Output Fields

Table 5 on page 122 describes the output fields for the `show services mobile-edge peers` command. Output fields are listed in the approximate order in which they appear.

Table 5: show services mobile-edge peers Output Fields

Field Name	Field Description
Peers Summary	<p>The Peers Summary field provides the following information:</p> <ul style="list-style-type: none">• Total number of control (SAEGW-C) peers.• Total number of access network peers.• Total rejected association setup requests.
Control Peer Information	<p>The Control Peer Information field provides the following information about each SAEGW-C:</p> <ul style="list-style-type: none">• IP address• Hostname• Routing-Instance• Peer Group name

Table 5: show services mobile-edge peers Output Fields *(Continued)*

Field Name	Field Description
Access Peer Information	<p>The Access Peer Information field provides the following information about each access network peer:</p> <ul style="list-style-type: none"> • IP address • Hostname • Routing-Instance • Peer Group name
Control Peer Statistics	<p>The Control Peer Statistics field provides the following statistics about each SAEGW-C:</p> <ul style="list-style-type: none"> • Heartbeat requests received and sent • Association setup requests received and sent • Association release requests received and sent • Session establishment requests received and sent (accepted and rejected) • Session modification requests received and sent (accepted and rejected) • Session deletion requests received and sent (accepted and rejected)
Access Peer Statistics	<p>The Access Peer Statistics field provides the following statistics about each access network peer:</p> <ul style="list-style-type: none"> • Echo requests received and sent

Sample Output

show services mobile-edge peers

```

user@host> show services mobile-edge peers
Peers Summary:
  Total control peers: 1

```

```
Total access peers: 1
Total association setup request rejects: 0
```

Control Peer information:

```
IP address:      30.71.1.3
Routing-Instance: default
```

Access Peer information:

```
IP address:      40.71.1.2
Routing-Instance: default
```

show services mobile-edge peers statistics

```
user@host> show services mobile-edge peers statistics
```

Peers Summary:

```
Total control peers: 1
Total access peers: 1
Total association setup request rejects: 0
```

Control Peer Statistics:

```
IP address:      13.1.0.4
Hostname:        saegw-c1
Routing-Instance: default
```

```
Heartbeat Requests Received:      11
Heartbeat Responses Sent:         11
```

```
Heartbeat Requests Sent:          2
Heartbeat Responses Received:     2
```

```
Association Setup Requests Received: 1
Association Setup Responses Sent:    1
```

```
Association Release Requests Received: 0
Association Release Responses Sent:    0
```

```
Session Establishment Requests Received: 30000
Session Establishment Responses Sent (Accepted): 30000
Session Establishment Responses Sent (Rejected): 0
```

```
Session Modification Requests Received: 30000
```

```

Session Modification Responses Sent (Accepted):    30000
Session Modification Responses Sent (Rejected):    0

```

```

Session Deletion Requests Received:                23169
Session Deletion Responses Sent (Accepted):        22968
Session Deletion Responses Sent (Rejected):        0
Load Control Enabled                               Yes
Load Control Information Sent                      10
Overload Control Enabled                           No
Overload Control Information Sent                   5

```

Access Peer Statistics:

```

IP address:           12.1.0.4
Routing-Instance:     default

```

```

Echo Requests Received:    0
Echo Responses Sent:       0
Echo Requests Sent:        0
Echo Responses Received:   0

```

Release Information

Command introduced in Junos OS 19.4R1.

Fields for Load and Overload Control introduced in Junos OS Release 23.1R1.

RELATED DOCUMENTATION

[Example: Configuring an MX Router as an SAEGW-U](#) | 56

show services mobile-edge resources call-admission-control statistics

IN THIS SECTION

- [Syntax | 126](#)
- [Description | 126](#)
- [Options | 126](#)
- [Required Privilege Level | 127](#)
- [Output Fields | 127](#)
- [Sample Output | 128](#)
- [Release Information | 128](#)

Syntax

```
show services mobile-edge resources call-admission-control statistics
```

Description

This command displays information about the bandwidth currently allocated to the guaranteed bit rate queues on each anchor Packet Forwarding Engine. It also displays the Call Admission Control (CAC) statistics.

Options

This command has no options.

Required Privilege Level

view

Output Fields

Table 6 on page 127 lists the output fields for the `show services mobile-edge resources call-admission-control statistics` command.

Table 6: show services mobile-edge resources call-admission-control statistics Output Fields

Field Name	Field Description
Allocated bandwidth	Amount of bandwidth currently allocated to GBR bearers and flows on the Packet Forwarding Engine.
Anchor	Name of the anchor Packet Forwarding Engine interface and its direction (downlink or uplink).
Calls admitted	Number of calls admitted to the anchor Packet Forwarding Engine during its uptime.
Calls rejected	Number of calls rejected by the anchor Packet Forwarding Engine due to no available bandwidth during its uptime.
High watermark	Maximum aggregate guaranteed bit rate bandwidth allocated on the anchor Packet Forwarding Engine through its uptime.
Oversubscription events	Number of times a new guaranteed bit rate bearer or flow was added when the aggregate bandwidth across all guaranteed bit rate bearers and flows exceeded the reserved bandwidth.
Reserved bandwidth	Amount of bandwidth reserved for guaranteed bit rate bearers and flows on the Packet Forwarding Engine.

Sample Output

show services mobile-edge resources call-admission-control statistics

```
user@host> show services mobile-edge resources call-admission-control statistics
Global CAC Statistics
  Calls admitted:      153943454
  Calls rejected (no bandwidth):  6
  Oversubscription events:    80

Anchor: pfe-2/1/0, Downlink
  Reserved bandwidth:    5000000 Kbps
  Allocated bandwidth:   24235 Kbps
  High watermark:        5804400 Kbps
  Oversubscription events: 10
```

Release Information

Juniper Networks introduced this command in Junos OS Release 22.2R1.

show services mobile-edge sessions

IN THIS SECTION

- [Syntax | 129](#)
- [Description | 129](#)
- [Options | 129](#)
- [Required Privilege Level | 130](#)
- [Output Fields | 130](#)
- [Sample Output | 133](#)
- [Release Information | 147](#)

Syntax

```
show services mobile-edge sessions
<control-plane-peers | detail | extensive | summary>
show services mobile-edge sessions control-plane-peers
<address>
show services mobile-edge sessions detail
<control-plane-peers>
show services mobile-edge sessions extensive
<local-seid>
show services mobile-edge sessions summary
<access-network-peers | anchor-group | apns | control-plane-peers | core-network-peers | pic |
slot | slot>
```

Description

This command gives information on mobile sessions active on the SAEGW-U/SGW-U/PGW-U/UPF.

NOTE: The backup routing engine (RE) supports only the top level of the `show services mobile-edge sessions summary` command and not any of its sub-options.

Options

none	Display information on mobile sessions active on the SAEGW-U/SGW-U/PGW-U/UPF.
control-plane-peers	Display information on mobile sessions for a specific or all SAEGW-Cs/SGW-C/PGW-C/SMF.
detail	Display detailed information on mobile sessions or on a specific SAEGW-C/SGW-C/PGW-C/SMF.
extensive	Display extensive information on mobile sessions or by local SEID.

summary	Display summary information on mobile sessions active on the SAEGW-U/SGW-U/PGW-U/UPF.
access-network-peers	Display session summary output by access network peer.
core-network-peers	Display session summary output by core network peer.
anchor-group	Display session summary output by anchor group.
apns	Display session summary output by APN.
local-seid	Display session extensive output for a local SEID.
pic	Display session summary output by PIC.
slot	Display session summary output by FPC slot.
statistics	Display detailed session statistics.

Required Privilege Level

view

Output Fields

[Table 7 on page 130](#) describes the output fields for the `show services mobile-edge sessions` command. Output fields are listed in the approximate order in which they appear.

Table 7: show services mobile-edge sessions Output Fields

Field Name	Field Description
Session-address	IP address of the session.
State	State of the session. ESTABLISHED or DELETING.
Num-bearers	Number of bearers for the session.

Table 7: show services mobile-edge sessions Output Fields (Continued)

Field Name	Field Description
Num-QoS-Flows	Number of 5G QoS flows for the session.
VRF-ID	The ID number (in hexadecimal format) of the routing-instance that the mobile-edge session's APN is attached to.
APN	Access Point Name
CPF-peer	IP address of the control plane peer for the session.
Access-peer	IP address of the access peer (eNodeB) for the session.
Core-peer	IP address of the core network peer for the session.
Anchor-PFE	Anchor PFE for the session.
Secondary-anchor-PFE	Backup anchor PFE for the session.
Local-SEID	Local session ID (SEID) for the session.
Remote-SEID	Remote SEID for the session.
User ID	IE that can be present in a PFCP Session Establishment Request. This IE is useful for troubleshooting problems in the UPF affecting a subscriber.
Bearer EBI/NSAPI	EPS Bearer ID / Network Service Access Point Identifier.
Loc TEID	The local TEID allocated by the SAEGW-U for a given access peer.
Rem TEID	The remote TEID allocated for a given access peer. This is signaled over PFCP.
FAR-ID	Forwarding Action Rule ID.

Table 7: show services mobile-edge sessions Output Fields (Continued)

Field Name	Field Description
Destination Interface	Destination Interface for a given FAR, either Access or Core.
PDR ID	Packet Detection Rule ID.
QER ID	QoS Enforcement Rule ID.
Uplink gate	Uplink QER gate status, either Open or Closed.
Downlink gate	Downlink QER gate status, either Open or Closed.
Uplink mbr	Uplink QER maximum bit rate before policing starts, in kbps.
Downlink mbr	Downlink QER maximum bit rate before policing starts, in kbps.
SDF Filter	Service data flow filter(s) for a given PDR. Flows matching these filters will be forwarded. All else are discarded.
Downlink Forwarding Class	Name of the downlink forwarding queue assigned to a given flow.
Sessions by State	The current number of sessions in state: ESTABLISHED, DELETING, and Total.
Bearers by State	The current number of bearers in state: BEARER_WAIT, ESTABLISHED, DELETING, and Total.

Table 7: show services mobile-edge sessions Output Fields (Continued)

Field Name	Field Description
Bearers by Downlink FAR state	<p>The current number of bearers by downlink FAR state. The allowable states are:</p> <ul style="list-style-type: none"> • FORWARD– Downlink FAR apply action is set to Forward. • DROP – Downlink FAR apply action is set to Drop. • IDLE – Downlink FAR apply action is set to Notify Control Plane and/or Buffer, but the first packet has not been detected by the PFE. • BUFFER - Downlink FAR apply action is set to Notify Control Plane and/or Buffer, and the first packet has been detected by the PFE.
Bearers by Resource Type	The current number of bearers by the type of resource: guaranteed bit rate (GBR) or best effort (Non-GBR).
5QoS Flows by Resource Type	The current number of 5G QoS flows by the type of resource: guaranteed bit rate (GBR) or best effort (Non-GBR).
APFE PIC	The anchor PFE PIC.
Slot	The FPC slot.

Sample Output

show services mobile-edge sessions

```

user@host> show services mobile-edge sessions
  Session-address: 23.0.21.163 State: ESTABLISHED Num-bearers: 1
    VRF-ID: 0x0 APN: default
    CPF-peer: 20.3.1.3 Access-peer: 10.4.1.6 Core-peer: 30.4.1.2
    Anchor-PFE: apfe0:pfe-3/0/0 Secondary-anchor-PFE: apfe0:pfe-2/0/0
    Local-SEID: 0x20015a2 Remote-SEID: 0x3cb2

  Session-address: 23.0.47.237 State: ESTABLISHED Num-bearers: 1

```

```

VRF-ID: 0x0 APN: default
CPF-peer: 20.3.1.3 Access-peer: 10.4.1.6 Core-peer: 30.4.1.2
Anchor-PFE: apfe0:pfe-3/0/0 Secondary-anchor-PFE: apfe0:pfe-2/0/0
Local-SEID: 0x2fec Remote-SEID: 0x56fc

Session-address: 23.0.21.49 State: ESTABLISHED Num-bearers: 1
VRF-ID: 0x0 APN: default
CPF-peer: 20.3.1.3 Access-peer: 10.4.1.6 Core-peer: 30.4.1.2
Anchor-PFE: apfe0:pfe-3/0/0 Secondary-anchor-PFE: apfe0:pfe-2/0/0
Local-SEID: 0x1531 Remote-SEID: 0x3c40

Session-address: 23.0.29.83 State: ESTABLISHED Num-bearers: 1
VRF-ID: 0x0 APN: default
CPF-peer: 20.3.1.3 Access-peer: 10.4.1.6 Core-peer: 30.4.1.2
Anchor-PFE: apfe0:pfe-3/0/0 Secondary-anchor-PFE: apfe0:pfe-2/0/0
Local-SEID: 0x2001d53 Remote-SEID: 0x4462

....

```

show services mobile-edge sessions (with framed IPv6 Route)

```

user@host> show services mobile-edge sessions
Session-address: 60.0.0.2 State: ESTABLISHED Num-bearers: 1
IPv6-prefix: db43:2019::/64
VRF-ID: 0x0 APN: default
CPF-peer: 20.3.1.3 Access-peer: 20.3.1.11 CPF-U-peer Count: 1
Anchor-PFE: apfe0:pfe-3/0/0 Secondary-anchor-PFE: apfe0:pfe-2/1/0
Local-SEID: 0x1 Remote-SEID: 0x2710
Framed-IPv6-Route: 2000:0:0:106::/64 2000::106:a00:20ff:fe99:a998 1

....

```

show services mobile-edge sessions control-plane-peers

```

user@host> show services mobile-edge sessions control-plane-peers
Peer Address: 20.3.1.3

Session-address: 23.0.21.163 State: ESTABLISHED Num-bearers: 1
Num-QoS-Flows: 2
VRF-ID: 0x0 APN: default

```

```
CPF-peer: 20.3.1.3 Access-peer: 10.4.1.6
Anchor-PFE: apfe0:pfe-3/0/0 Secondary-anchor-PFE: apfe0:pfe-2/0/0
Local-SEID: 0x20015a2 Remote-SEID: 0x3cb2
```

```
Peer Address: 20.3.1.3
```

```
Session-address: 23.0.47.237 State: ESTABLISHED Num-bearers: 1
Num-QoS-Flows: 2
VRF-ID: 0x0 APN: default
CPF-peer: 20.3.1.3 Access-peer: 10.4.1.6
Anchor-PFE: apfe0:pfe-3/0/0 Secondary-anchor-PFE: apfe0:pfe-2/0/0
Local-SEID: 0x2fec Remote-SEID: 0x56fc
```

```
Peer Address: 20.3.1.3
```

```
Session-address: 23.0.21.49 State: ESTABLISHED Num-bearers: 1
Num-QoS-Flows: 2
VRF-ID: 0x0 APN: default
CPF-peer: 20.3.1.3 Access-peer: 10.4.1.6
Anchor-PFE: apfe0:pfe-3/0/0 Secondary-anchor-PFE: apfe0:pfe-2/0/0
Local-SEID: 0x1531 Remote-SEID: 0x3c40
```

```
Peer Address: 20.3.1.3
```

```
Session-address: 23.0.29.83 State: ESTABLISHED Num-bearers: 1
Num-QoS-Flows: 2
VRF-ID: 0x0 APN: default
CPF-peer: 20.3.1.3 Access-peer: 10.4.1.6
Anchor-PFE: apfe0:pfe-3/0/0 Secondary-anchor-PFE: apfe0:pfe-2/0/0
Local-SEID: 0x2001d53 Remote-SEID: 0x4462
```

```
...
```

show services mobile-edge sessions detail

```
user@host> show services mobile-edge sessions detail
```

```
Session-address: 99.0.6.2 State: ESTABLISHED Num-bearers: 1
Num-QoS-Flows: 2
VRF-ID: 0x0 APN: default
CPF-peer: 35.1.0.4 Access-peer: 35.1.0.5
Anchor-PFE: apfe1:pfe-0/1/0 Secondary-anchor-PFE: apfe1:pfe-3/1/0
```

```

Local-SEID: 0x2000608 Remote-SEID: 0x2d12

Bearer EBI/NSAPI: 5 State: ESTABLISHED
  Access: Address: 35.1.0.5 Local TEID: 0x504000 Remote TEID: 0x602

QFI: 1
  Downlink Forwarding Class: GBR-LOW

QFI: 2
  Downlink Forwarding Class: BE-HIGH-0

Session-address: 99.0.4.219 State: ESTABLISHED Num-bearers: 1
  Num-QoS-Flows: 2
  VRF-ID: 0x0 APN: default
  CPF-peer: 35.1.0.4 Access-peer: 35.1.0.5
  Anchor-PFE: apfe1:pfe-0/1/0 Secondary-anchor-PFE: apfe1:pfe-3/1/0
  Local-SEID: 0x30004da Remote-SEID: 0x2beb

Bearer EBI/NSAPI: 5 State: ESTABLISHED
  Access: Address: 35.1.0.5 Local TEID: 0x701860 Remote TEID: 0x4db

QFI: 1
  Downlink Forwarding Class: GBR-LOW

QFI: 2
  Downlink Forwarding Class: BE-HIGH-0

....

```

show services mobile-edge sessions detail (with framed IPv6 route)

```

user@host> show services mobile-edge sessions detail
Session-address: 60.0.0.2 State: ESTABLISHED Num-bearers: 1
  IPv6-prefix: db43:2019::/64
  VRF-ID: 0x0 APN: default
  CPF-peer: 20.3.1.3 Access-peer: 20.3.1.11   CPF-U-peer Count: 1
  Anchor-PFE: apfe0:pfe-3/0/0 Secondary-anchor-PFE: apfe0:pfe-2/1/0
  Local-SEID: 0x1 Remote-SEID: 0x2710
  Framed-IPv6-Route: 2000:0:0:106::/64 2000::106:a00:20ff:fe99:a998 1
  Framed-IPv4-Route: 66.0.1.0/24 60.0.0.2 1

```

```

Bearer EBI/NSAPI: 5 State: ESTABLISHED
  Access: Address: 20.3.1.11 Local TEID: 0x100000 Remote TEID: 0x1f4240
  CPF-U: Address: 20.3.1.4 Local TEID: 0x100700 Remote TEID: 0x7530

```

```
....
```

show services mobile-edge sessions detail control-plane-peers

```
user@host> show services mobile-edge sessions detail control-plane-peers address
```

```
Peer Address: 35.1.0.4
```

```
  Session-address: 99.0.6.2 State: ESTABLISHED Num-bearers: 1
```

```
    Num-QoS-Flows: 2
```

```
    VRF-ID: 0x0 APN: default
```

```
    CPF-peer: 35.1.0.4 Access-peer: 35.1.0.5
```

```
    Anchor-PFE: apfe1:pfe-0/1/0 Secondary-anchor-PFE: apfe1:pfe-3/1/0
```

```
    Local-SEID: 0x2000608 Remote-SEID: 0x2d12
```

```
  Bearer EBI/NSAPI: 5 State: ESTABLISHED
```

```
    Access: Address: 35.1.0.5 Local TEID: 0x504000 Remote TEID: 0x602
```

```
  QFI: 1
```

```
    Downlink Forwarding Class: GBR-LOW
```

```
  QFI: 2
```

```
    Downlink Forwarding Class: BE-HIGH-0
```

```
Session-address: 99.0.4.219 State: ESTABLISHED Num-bearers: 1
```

```
  Num-QoS-Flows: 2
```

```
  VRF-ID: 0x0 APN: default
```

```
  CPF-peer: 35.1.0.4 Access-peer: 35.1.0.5
```

```
  Anchor-PFE: apfe1:pfe-0/1/0 Secondary-anchor-PFE: apfe1:pfe-3/1/0
```

```
  Local-SEID: 0x30004da Remote-SEID: 0x2beb
```

```
  Bearer EBI/NSAPI: 5 State: ESTABLISHED
```

```
    Access: Address: 35.1.0.5 Local TEID: 0x701860 Remote TEID: 0x4db
```

```
  QFI: 1
```

```
    Downlink Forwarding Class: GBR-LOW
```

```
  QFI: 2
```

Downlink Forwarding Class: BE-HIGH-0

....

show services mobile-edge sessions extensive

```
user@host> show services mobile-edge sessions extensive
```

Session-address: 99.0.6.2 State: ESTABLISHED Num-bearers: 1

Num-QoS-Flows: 2

VRF-ID: 0x0 APN: default

CPF-peer: 198.18.26.1 Access-peer: 198.18.25.2

Anchor-PFE: apfe1:pfe-2/1/0 Secondary-anchor-PFE: apfe1:pfe-3/1/0

Local-SEID: 0x2000608 Remote-SEID: 0x2d12

Bearer EBI/NSAPI: 5 State: ESTABLISHED

Access: Address: 198.18.25.2 Local TEID: 0x504000 Remote TEID: 0x602

FAR-ID: 1

Destination Interface: Core

Transport Level Marking: No marking

Apply Action: FORWARD

FAR-ID: 2

Destination Interface: Access

Transport Level Marking: No marking

Apply Action: FORWARD

Outer Header Creation: GTP-U/UDP/IPv4

Remote Address: 35.1.0.5 Remote TEID: 0x602

Downlink forwarding class: BE-LOW-1

Downlink egress forwarding class: best-effort

FAR-ID: 3

Destination Interface: Access

Transport Level Marking: 0x20

Apply Action: Notify CP, Buffer

PDR ID: 4

Source Interface: Core

Precedence: 250

FAR ID: 3

TFE ID: 2

QER ID: 2

Uplink gate : Open Downlink gate : Open
 Uplink mbr : 20000 kbps Downlink mbr : 20000 kbps
 QFI : 2
 SDF Filter:
 permit out 17 from any 4002 to assigned 4003
 Downlink Forwarding Class: BE-HIGH-0

PDR ID: 2

Source Interface: Access
 Local TEID: 0x504000
 Precedence: 252
 FAR ID: 1
 URR ID: 2
 QER ID: 2
 Uplink gate : Open Downlink gate : Open
 Uplink mbr : 20000 kbps Downlink mbr : 20000 kbps
 QFI : 2
 SDF Filter:
 permit out 17 from any 4002 to assigned 4003
 QFI: 2

PDR ID: 3

Source Interface: Core
 Precedence: 255
 FAR ID: 2
 URR ID: 1
 QER ID: 1
 Uplink gate : Open Downlink gate : Open
 Uplink mbr : 10000 kbps Downlink mbr : 10000 kbps
 Uplink gbr : 500 kbps Downlink gbr : 500 kbps
 QFI : 1
 SDF Filter:
 permit out 17 from any 3002 to assigned 3003
 Downlink Forwarding Class: GBR-LOW

PDR ID: 1

Source Interface: Access
 Local TEID: 0x504000
 Precedence: 255
 FAR ID: 1
 URR ID: 1
 QER ID: 1
 Uplink gate : Open Downlink gate : Open

Uplink mbr : 10000 kbps Downlink mbr : 10000 kbps
 Uplink gbr : 500 kbps Downlink gbr : 500 kbps
 QFI : 1

SDF Filter:

permit out 17 from any 3002 to assigned 3003

QFI: 1

URR ID: 0x2

Measurement Method: Volume
 Reporting Trigger: Volume Threshold
 Total volume threshold: 1000000 octets

Usage report trigger: Volume Threshold
 Usage report start timestamp: Tue May 24 21:37:52 2022 UTC
 Usage report stop timestamp: Tue May 24 21:39:41 2022 UTC
 Usage report uplink volume: 999948 octets
 Usage report downlink volume: 0 octets
 Usage report total volume: 999948 octets

URR ID: 0x1

Measurement Method: Volume
 Reporting Trigger: Volume Threshold
 Total volume threshold: 500000 octets

Usage report trigger: Volume Threshold
 Usage report start timestamp: Tue May 24 21:40:44 2022 UTC
 Usage report stop timestamp: Tue May 24 21:40:58 2022 UTC
 Usage report uplink volume: 250056 octets
 Usage report downlink volume: 249964 octets
 Usage report total volume: 500020 octets

URR statistics:

URR messages:

URR ID	Usage Report Count	Last Report Timestamp
0x2	160	Tue May 24 21:39:41 2022
0x1	1284	Tue May 24 21:40:58 2022

Session Reports:

Type	Report Count	Last Report Timestamp
------	--------------	-----------------------

Usage	1444	Tue May 24 21:40:58 2022
Total	1444	

show services mobile-edge sessions extensive (with framed IPv6 route)

```
user@host> show services mobile-edge sessions extensive
```

```
Session-address: 60.0.0.2 State: ESTABLISHED Num-bearers: 1
```

```
IPv6 Prefix: db43:2019::/64
```

```
VRF-ID: 0x0 APN: default
```

```
CPF-peer: 20.3.1.3 Access-peer: 20.3.1.11 CPF-U-peer Count: 1
```

```
Anchor-PFE: apfe0:pfe-3/0/0 Secondary-anchor-PFE: apfe1:pfe-2/1/0
```

```
Local-SEID: 0x1 Remote-SEID: 0x2710
```

```
Framed-IPv6-Route: 2000:0:0:106::/64 2000::106:a00:20ff:fe99:a998 1
```

```
Framed-IPv4-Route: 66.0.1.0/24 60.0.0.2 1
```

```
Bearer EBI/NSAPI: 5 State: ESTABLISHED
```

```
Access: Address: 20.3.1.11 Local TEID: 0x100000 Remote TEID: 0x1f4240
```

```
CPF-U: Address: 20.3.1.4 Local TEID: 0x100700 Remote TEID: 0x7530
```

```
FAR-ID: 1
```

```
Destination Interface: Core
```

```
Transport Level Marking: No marking
```

```
Apply Action: FORWARD
```

```
FAR-ID: 2
```

```
Destination Interface: Access
```

```
Transport Level Marking: No marking
```

```
Apply Action: FORWARD
```

```
Outer Header Creation: GTP-U/UDP/IPv4
```

```
FAR-ID: 3
```

```
Destination Interface: CP-Func
```

```
Transport Level Marking: No Marking
```

```
Apply Action: FORWARD
```

```
Outer Header Creation: GTP-U/UDP/IPv4
```

```
PDR ID: 4
```

```
Source Interface: Access
```

```
Local TEID: 0x100000
```

```
FAR ID: 3
```

```
QER ID: 1
```

```

    Uplink gate : Open      Downlink gate   : Open
    Uplink mbr  : 5000 kbps   Downlink mbr   : 5000 kbps
    Precedence: 1
    SDF Filter:
    permit out 58 from ff02::2 to assigned

```

PDR ID: 3

```

    Source Interface: CP-FUNC
    Local TEID: 0x100700
    FAR ID: 2
    QER ID: 1
    Uplink gate : Open      Downlink gate   : Open
    Uplink mbr  : 5000 kbps   Downlink mbr   : 5000 kbps
    Precedence: 1000
    SDF Filter:
    permit out 58 from any to assigned

```

PDR ID: 2

```

    Source Interface: Core
    FAR ID: 2
    TFE ID: 2
    URR ID: 1
    QER ID: 1
    Uplink gate : Open      Downlink gate   : Open
    Uplink mbr  : 5000 kbps   Downlink mbr   : 5000 kbps
    Precedence: 255
    SDF Filter:
    permit out ip from any to assigned

```

PDR ID: 1

```

    Source Interface: Access
    Local TEID: 0x100000
    FAR ID: 1
    TFE ID: 1
    URR ID: 1
    QER ID: 1
    Uplink gate : Open      Downlink gate   : Open
    Uplink mbr  : 5000 kbps   Downlink mbr   : 5000 kbps
    Precedence: 255
    SDF Filter:
    permit out ip from any to assigned

```

URR ID: 0x1

Measurement Method:	Volume
Reporting Trigger:	Volume Threshold
Total volume threshold:	10000 octets

Session Reports:

Type	Report Count	Last Report Timestamp
Total	0	

show services mobile-edge sessions summary

```
user@host> show services mobile-edge sessions summary
```

Sessions by State:

```
ESTABLISHED: 2000
Total: 2000
```

Bearers by State:

```
ESTABLISHED: 2000
Total: 2000
```

Bearers by Downlink FAR State:

```
FORWARD: 2000
Total: 2000
```

Bearers by Resource Type:

```
Non-GBR: 2000
Total: 2000
```

5G QoS Flows by State:

```
ESTABLISHED: 4000
Total: 4000
```

5G QoS Flows by Resource Type:

```
GBR: 2000
Non-GBR: 2000
Total: 4000
```

show services mobile-edge sessions summary access-network-peers

```
user@host> show services mobile-edge sessions summary access-network-peers
```

```
Summary by Access Peer:
```

Peer Address: 40.71.1.2

Sessions by State:

ESTABLISHED: 6426

Total: 6426

Beareres by State:

ESTABLISHED: 6426

DELETING: 4832

Total: 11258

show services mobile-edge sessions summary anchor-group

```
user@host> show services mobile-edge sessions summary anchor-group
```

Summary by pic:

APFE PIC: apfe0:pfe-4/0

Sessions by State:

ESTABLISHED: 6421

DELETING: 4832

Total: 11253

Beareres by State:

BEARER_WAIT: 58696

ESTABLISHED: 6421

DELETING: 4927

Total: 70044

Summary by pic:

APFE PIC: apfe0:pfe-1/0

Sessions by State:

ESTABLISHED: 6421

DELETING: 4832

Total: 11253

Beareres by State:

BEARER_WAIT: 58696

ESTABLISHED: 6421

DELETING: 4927

Total: 70044

show services mobile-edge sessions summary apns

```
user@host> show services mobile-edge sessions summary apns
```

Summary by Access Point Names:

APN: default

Sessions by State:

ESTABLISHED: 6421

DELETING: 4832

Total: 11253

Beareres by State:

ESTABLISHED: 6421

DELETING: 4832

Total: 11253

Summary by Access Point Names:

APN: test.internet.488

Sessions by State:

Total: 0

Beareres by State:

Total: 0

show services mobile-edge sessions summary control-plane-peers

```
user@host> show services mobile-edge sessions summary control-plane-peers
```

Summary by Control Peer:

Peer Address: 30.71.1.3

Sessions by State:

ESTABLISHED: 6421

DELETING: 4832

Total: 11253

Beareres by State:

BEARER_WAIT: 58696

ESTABLISHED: 6421

DELETING: 4927

Total: 70044

show services mobile-edge sessions summary pic

```
user@host> show services mobile-edge sessions summary pic
```

```
Summary by pic:
```

```
APFE PIC: pfe-1/0
```

```
Sessions by State:
```

```
ESTABLISHED: 6421
```

```
DELETING: 4832
```

```
Total: 11253
```

```
Bearers by State:
```

```
BEARER_WAIT: 58696
```

```
ESTABLISHED: 6421
```

```
DELETING: 4927
```

```
Total: 70044
```

```
Summary by pic:
```

```
APFE PIC: pfe-4/0
```

```
Sessions by State:
```

```
ESTABLISHED: 6421
```

```
DELETING: 4832
```

```
Total: 11253
```

```
Bearers by State:
```

```
BEARER_WAIT: 58696
```

```
ESTABLISHED: 6421
```

```
DELETING: 4927
```

```
Total: 70044
```

show services mobile-edge sessions summary slot

```
user@host> show services mobile-edge sessions summary slot
```

```
Summary by slot:
```

```
Slot: pfe-1
```

```
Sessions by State:
```

```
ESTABLISHED: 6421
```

```
DELETING: 4832
```

```
Total: 11253
```

```
Bearers by State:
```



```
BEARER_WAIT: 58696
ESTABLISHED: 6421
DELETING: 4927
Total: 70044
```

Summary by slot:

Slot: pfe-4

```
Sessions by State:
ESTABLISHED: 6421
DELETING: 4832
Total: 11253
```

```
Bearers by State:
BEARER_WAIT: 58696
ESTABLISHED: 6421
DELETING: 4927
Total: 70044
```

Release Information

Command introduced in Junos OS 19.4R1.

core-network-peers option introduced in Junos OS 20.4R1.

Framed IPv6 Route options introduced in Junos OS 22.4R1.

RELATED DOCUMENTATION

[Example: Configuring an MX Router as an SAEGW-U](#) | 56

show services mobile-edge summary

IN THIS SECTION

- [Syntax | 148](#)
- [Description | 148](#)
- [Required Privilege Level | 148](#)
- [Output Fields | 148](#)
- [Sample Output | 150](#)
- [Release Information | 151](#)

Syntax

```
show services mobile-edge summary
```

Description

This command gives summary information on the SAEGW-U.

Required Privilege Level

view

Output Fields

[Table 8 on page 149](#) describes the output fields for the `show services mobile-edge summary` command. Output fields are listed in the approximate order in which they appear.

Table 8: show services mobile-edge summary Output Fields

Field Name	Field Description
Graceful-Restart	Whether graceful-restart is enabled or disabled.
Primary Role	Primary Role state for the given routing engine (RE) this command is executed on. For the primary RE, Master is displayed. For the backup RE, Standby is displayed. If GRES not enabled, Standalone is displayed.
State	State can be either Running or Bulk Sync. Bulk Sync implies we are waiting for synchronization.
Bulk Sync	Status of Bulk Sync. Must be Synchronized with GRES enabled to preserve state through daemon restart. Other states are Synchronizing or N/A (when GRES is not enabled).
CPU Load	Provides the percentage of the CPU in use.
Memory Load	The amount of memory in use.
Session Load	The percentage of the maximum session capacity in use. The date and time of the highest ever session load is also provided.
GBR CAC Load	The percentage of the maximum system bandwidth in use on the system. The date and time of the highest ever GBR CAC Load is also provided.
Inflight Load	The percentage of the maximum active registration procedures on the system. The system will be in overload status if this number exceeds 80%. The date and time of the highest ever Inflight Load is also provided.
PFE queue Load	The percentage of traffic on the PFE that is on the Waiting-to-Send (WTS) queue. This can be used to monitor system congestion. The date and time of the highest ever PFE Queue Load is also provided.
Aggregate Load	The total load of the system in use, as compared to the maximum load use case. The date and time of the highest ever Aggregate Load is also provided.

Table 8: show services mobile-edge summary Output Fields (Continued)

Field Name	Field Description
Aggregate Overload	The total overload percentage of the system. The date and time of the highest ever Aggregate Overload is also given.
Processed Session Messages/Sec	The number of session messages per second that the system has processed. The date and time of the highest ever Processed Session Messages/Sec is also provided.
Received Session Messages/Sec	The number of system messages per second that the system has received. The date and time of the highest ever Received Session Messages/Sec is also given.

Sample Output

show services mobile-edge summary

```

user@host> show services mobile-edge summary
Graceful-Restart      Enabled
Mastership            Master
State                 Running
Bulk Sync             Synchronized
CPU Load              40%
Memory Load           10%
Session Load          10% (top 26% at Jan.24 12:34)
GBR CAC Load          15% (top 20% at Jan.24 12:34)
Inflight Load         5% (top 6% at Jan.24 12:31)
PFE queue Load        0% (top 2% at Jan.23 21:08)
Aggregate Load        7% (top 7% at Jan.24 12:53)
Aggregate Overload    7% (top 7% at Jan.25 12:53)
Processed Session Messages/Sec 0 (top 1117 at Jan.24 12:44)
Received Session Messages/Sec 0 (top 1631 at Jan.24 12:44)

```

Release Information

Command introduced in Junos OS 19.4R1.

Additional fields for Load and Overload Information added in Junos OS Release 23.1R1.

RELATED DOCUMENTATION

[Example: Configuring an MX Router as an SAEGW-U](#) | 56