

Overview of the Web Services Gateway

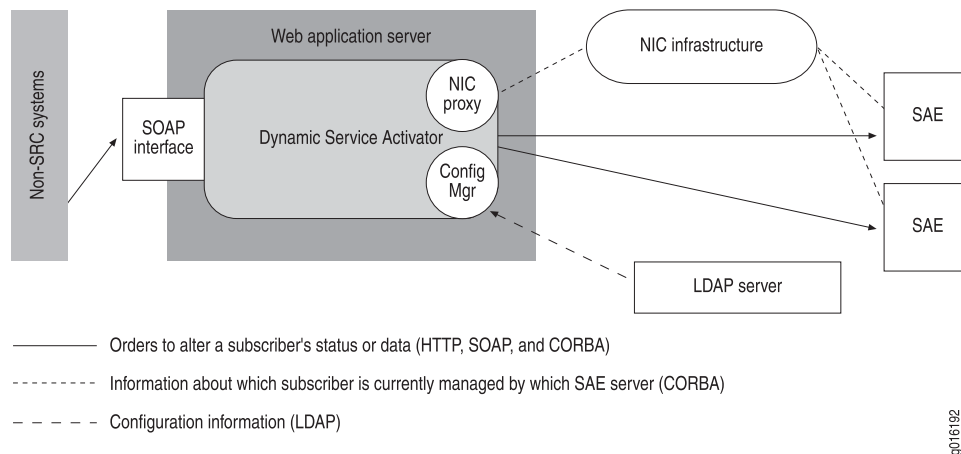
The Web Services Gateway allows a *gateway client*—an application that is not part of the SRC network—to interact with SRC components through a Simple Object Access Protocol (SOAP) interface. This feature is useful for business-to-business (B2B) situations, such as wholesaler-retailer environments. Typically, the wholesaler owns and administers the SRC components, whereas the retailer maintains a database of subscribers. Retailers purchase services from one or more wholesalers and sell the services to their subscribers.

The Web Services Gateway supports Web applications that allow gateway clients to interact with the SRC network. The SRC owner installs, configures, and administers the Web applications. Using information provided by the SRC owner, the business partner creates gateway clients to communicate with the SRC components.

The Web Services Gateway offers the Dynamic Service Activation Web application (subsequently known as Dynamic Service Activator). The Dynamic Service Activator allows a gateway client to dynamically activate and deactivate services for subscribers and to run scripts that manage the SAE.

Figure 1 shows the architecture for the Web Services Gateway.

Figure 1: Web Services Gateway Architecture



- Related Topics**
- Overview of Dynamic Service Activator
 - Dynamic Service Activator in a Redundant Environment
 - Starting Dynamic Service Activator (SRC CLI)
 - Terminology