

Automatic Activation at Login

An activate-on-login subscription is a subscription that is configured to start every time the subscriber logs in.

A manual subscription is a subscription that is configured to start only by an action from the subscriber.

For example, residential subscriber Elizabeth has designated her high-speed subscription to automatically activate every time she logs in. On the other hand, her video subscription is not activated unless she activates it by clicking a button on a portal page. It is possible to integrate the SAE with a video-on-demand server so that the video service is automatically activated when Elizabeth logs in. This type of configuration ensures access to the server and to QoS for the video stream. When the video stream is finished, the video-on-demand server triggers the SAE to stop the video service.

Residential subscriber Robert is interested in streaming audio. He sets his subscriptions so that regular-speed service, along with his subscription to an audio service, is automatically activated every time he logs in.

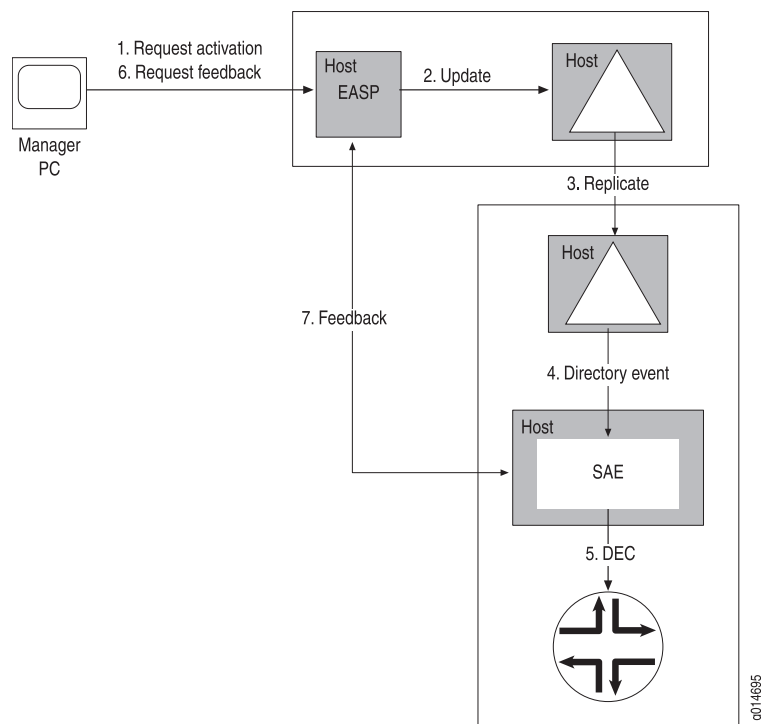
Enterprise-Specific Remote Session Activation

When a subscription is set for automatic activation through the Web interface, a service session request message is sent from the manager's PC to the Enterprise Manager Portal. The Enterprise Manager Portal writes this request to the directory, and the directory eventing system (DES) notifies the SAE affected by this request of the directory event. The SAE then sends a COPS or BEEP decision message to the router to download the policies for the activated subscription.

The enterprise manager must explicitly request feedback to see whether the session succeeded and what the operational values for the service parameters actually are. To do this, the enterprise manager sends a feedback request to the Enterprise Manager Portal. To process this request, the Enterprise Manager Portal sends a feedback request to the remote SAE managing the access through CORBA and returns the response to the enterprise manager's browser.

Figure 1 on page 2 shows the sequence of messaging events that occur between the manager PC, the Enterprise Manager Portal, the master and shadow directories, the remote SAE, and the router.

Figure 1: Remote Session Activation Sequence



- Related Topics**
- Overview of Login Events and Processes
 - Summary of the Login Process
 - Subscriptions and Activations
 - Residential Subscriber Login and Processes
 - Overview of Managers