

Enterprise Subscriber and Subscription Hierarchy

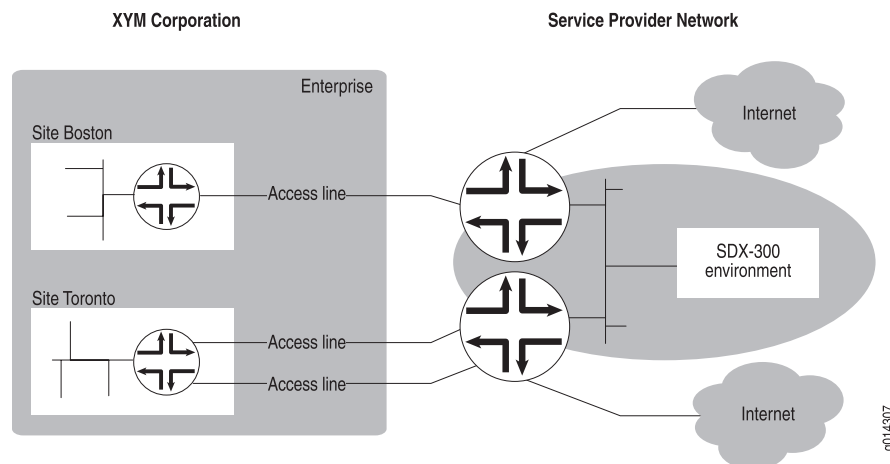
In the enterprise model, a subscriber is an individual physical access line managed through the enterprise service portal over which services are delivered by the service provider. In the enterprise, the SRC software supports the organization of the enterprise in the following hierarchy (Figure 1 on page 1):

- Enterprise—The business itself as a customer of the service provider; for example, the XYM Corporation. An enterprise can have its own set of subscriptions over a physical access line.
- Site—One or more locations, physical or virtual, within the enterprise that share service subscriptions and physical access to services and that are each managed as a unique entity. For example, the XYM Corporation might have a site in Boston and a site in Toronto. Each of these sites can have its own set of subscribed services.
- Access line—A physical access line (usually within a site) from the customer to the service provider's router; the router is configured to access the SRC environment and the Internet and/or the customer's network-based VPN. An access line can have its own set of subscribed services.

Enterprise IT managers can use the enterprise service portal to manage interfaces connecting enterprise sites to the network. These interfaces can be leased-line connections or authenticated PPP and DHCP connections.

Figure 1 on page 1 shows an enterprise hierarchy.

Figure 1: Enterprise Hierarchy



Sites and access lines are subordinate to an enterprise; the enterprise sometimes contains sites and access lines. Access lines are subordinate to a site; the site contains access lines.

In Figure 1 on page 1, the XYM Corporation enterprise contains two subordinate sites, Boston and Toronto. The Boston site contains a single subordinate access line, whereas the Toronto site contains two subordinate access lines. All three access lines

connect to a router in the service provider network. An individual access line, for example, might be a T1 line running PPP or a T3 line running Frame Relay.

Enterprise Subscription Hierarchy

The organizational levels of the enterprise receive subscribed services in a hierarchical manner. The availability of a subscription to a higher level affects its availability to a lower level.

- Enterprise—Subscriptions apply to all sites and all access lines across the enterprise.
- Site—Subscriptions apply to all access lines grouped within a site.
- Access line—Subscriptions apply to a given access line that connects the enterprise to the service provider's network.

Related Topics

- Overview of Subscribers
- Overview of Subscriptions
- Enterprise Subscriber Login Process
- Overview of Configuring Subscribers and Subscriptions
- Enabling the Subscriber and Subscription Configuration on the SRC CLI