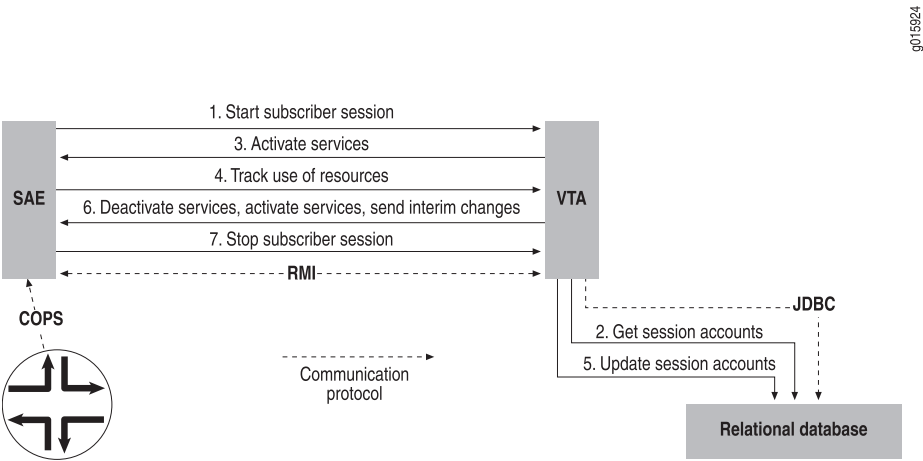


# SRC-VTA Operation

Figure 1 on page 1 illustrates the SRC-VTA operation process.

Figure 1: Operation of the SRC-VTA



The SRC-VTA operates as follows:

1. When an event that activates a service occurs (for example, a subscriber logs in), the SAE sends a session start event to the SRC-VTA through the SAE external plug-in interface.
2. Optionally, the SRC-VTA queries a database for the subscriber's current set of sessions and accounts.
3. Depending on the configuration of the SRC-VTA, it may activate or deactivate services based on the subscriber's use of resources.
4. The SRC-VTA tracks the subscriber's use of resources for a period of time.
5. The SRC-VTA updates sessions and account balances in the database.
6. The SRC-VTA sends to the SAE changes in the interim accounting interval and takes action to limit excessive bandwidth use or to allow increased bandwidth use.
7. When an event that deactivates a service occurs (for example, the subscriber logs out), the SRC-VTA updates the VTA session, closes the VTA session, and may update the account balances.

Events received through the remote interface can also cause the SRC-VTA to activate services, deactivate services, or change the accounting interval.

## Related Topics

- Overview of the SRC-VTA
- How the SRC-VTA Works
- Installing the SRC-VTA and Running the Configuration Script
- SRC-VTA Architecture and Connections to SRC Components

