

Chapter 9

Configuring Local and Global Parameters with Policy Editor

This chapter describes how to configure global and local parameters with Policy Editor. You can also use the following to configure parameters:

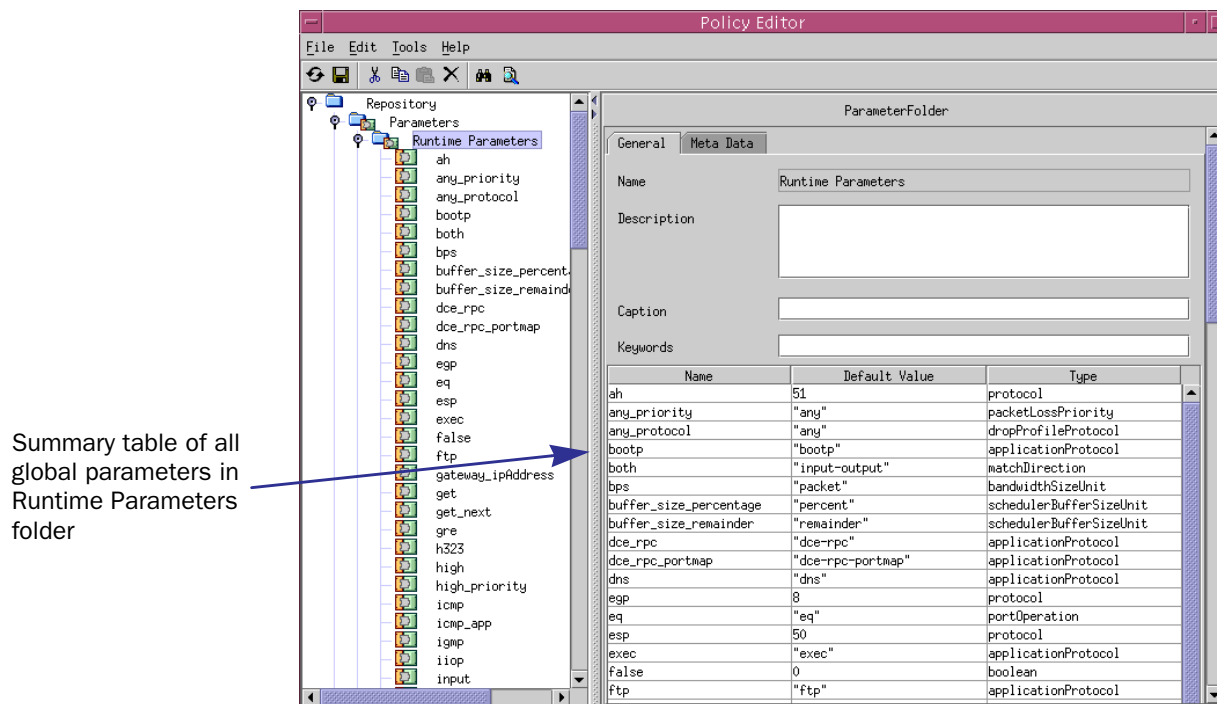
- To use the SRC CLI, see *Chapter 10, Configuring and Managing Policies with the SRC CLI*.
- To use the C-Web interface, see *SRC-PE C-Web Interface Configuration Guide, Chapter 22, Configuring Local and Global Parameters with the C-Web Interface*.

Topics in this chapter include:

- Viewing Global Parameters in Policy Editor on page 201
- Viewing Local Parameters in Policy Editor on page 202
- Creating and Modifying Global Parameters in Policy Editor on page 203
- Creating and Modifying Local Parameters in Policy Editor on page 206

Viewing Global Parameters in Policy Editor

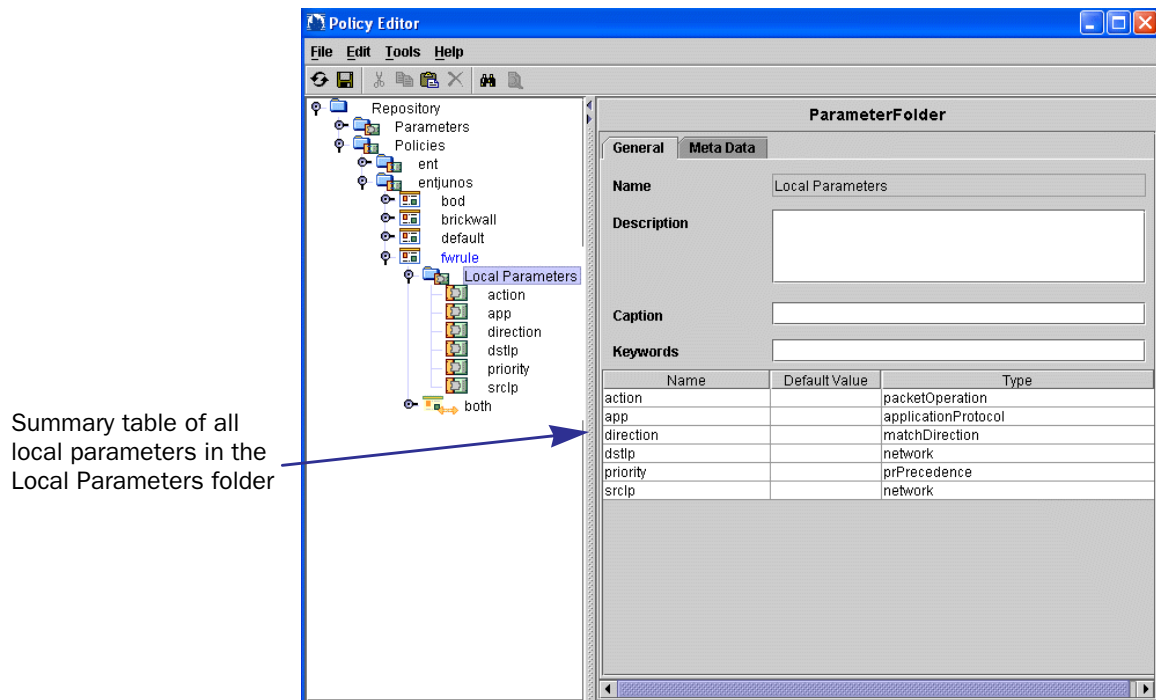
In Policy Editor, global parameters are held in the Parameters repository. To view global parameters, expand and select the Parameters folder in the Policy Editor navigation pane. In Figure 27, the Runtime Parameters folder is selected, which causes all parameters in that folder to appear in the parameter summary table. To view a specific parameter, select the parameter in the navigation pane.

Figure 27: Parameter Folder with Global Parameters

Viewing Local Parameters in Policy Editor

When you create a policy group, Policy Editor automatically creates a Local Parameters folder inside the policy group. To view all local parameters for a policy group, select the Local Parameters folder in the navigation pane. (See Figure 28.) All local parameters that you create within the policy group are displayed in a summary table in the ParameterFolder pane. To view a specific parameter, select the parameter in the navigation pane.

Figure 28: Local Parameter Folder



(Note that the term *type* is used in Policy Editor, and the term *role* is used in SDX Admin. Both terms have the same meaning.)

Creating and Modifying Global Parameters in Policy Editor

If you change global variables for policies, the change takes effect the next time a service is activated; the change does not take effect for active service sessions.

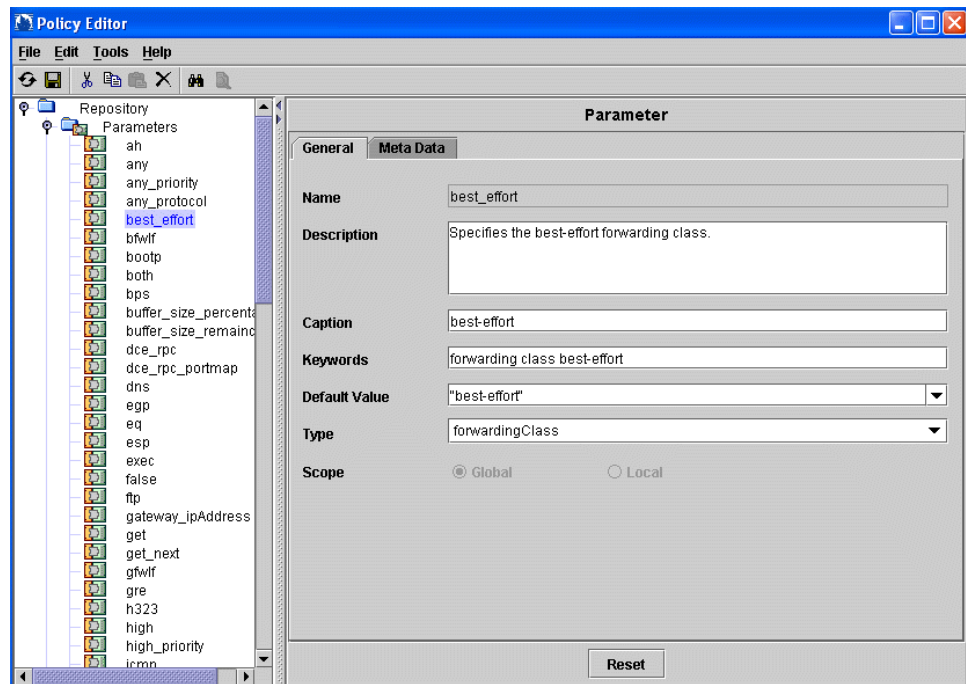
You can create a global parameter from the Parameters folder and from within a policy.

Creating Global Parameters from the Parameters Folder

To create a global parameter from the Parameters folder:

1. In the Policy Editor navigation pane, right-click the **Parameters** folder, and select **New > Parameter**.
2. In the Parameter Name dialog box, assign a name to the parameter. This is the name that appears in Policy Editor drop-down menus.
3. Select the new parameter in the navigation pane.

The Parameter pane appears.



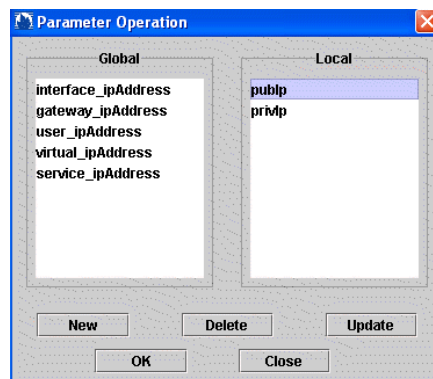
4. Fill in the fields as described in *Parameter Definition Fields* on page 205.

Creating Global Parameters Within a Policy

Policy fields for which you can use parameters have a  icon next to them. To create a global parameter from within a policy:

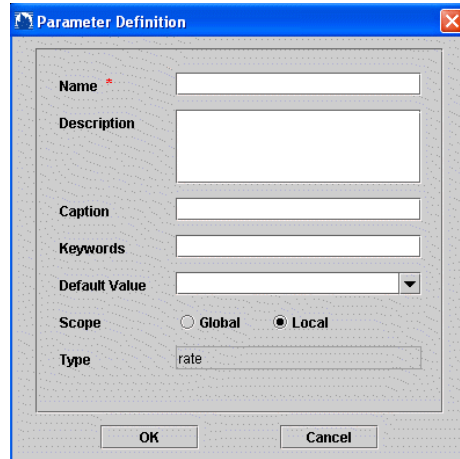
1. Click the  icon next to the field for which you want to create a global parameter.

The Parameter Operation dialog box appears. Existing local and global parameters are listed. You can add, delete, or modify global parameters from this dialog box. You can also add local parameters.



2. Click **New**.

The Parameter Definition dialog box appears.



The image shows a 'Parameter Definition' dialog box with the following fields and controls:

- Name:** A text input field with a red asterisk indicating it is required.
- Description:** A large text area for a detailed description.
- Caption:** A text input field for a short description.
- Keywords:** A text input field for search terms.
- Default Value:** A dropdown menu.
- Scope:** Two radio buttons, 'Global' and 'Local', with 'Local' selected.
- Type:** A text input field containing the word 'rate'.
- Buttons:** 'OK' and 'Cancel' buttons at the bottom.

3. Fill in the fields as described in *Parameter Definition Fields* on page 205.

Parameter Definition Fields

Use the fields in this section to configure parameters.

Description

- Description of the parameter. You can provide extra information and examples of how the parameter is used.
- Value—Text
- Default—No value

Caption

- Short description of the parameter.
- Value—Text
- Default—No value

Keywords

- Keywords that you can use to search for a parameter.
- Value—Text
- Default—No value

Default Value

- An optional value that the policy engine uses if no other values are provided during the parameter value acquisition process. If other values are provided to the policy engine but problems are encountered, the default value for the parameter is not used. The policy engine generates an error.
- Value—Valid value for the parameter type; see Table 23 on page 191 for valid values of each parameter type
- Default—No value

Scope

- Specifies whether the parameter is a global parameter or a local parameter.
- Value
 - global—Select to create a global parameter.
 - local—Select to create a local parameter.
- Default—Local

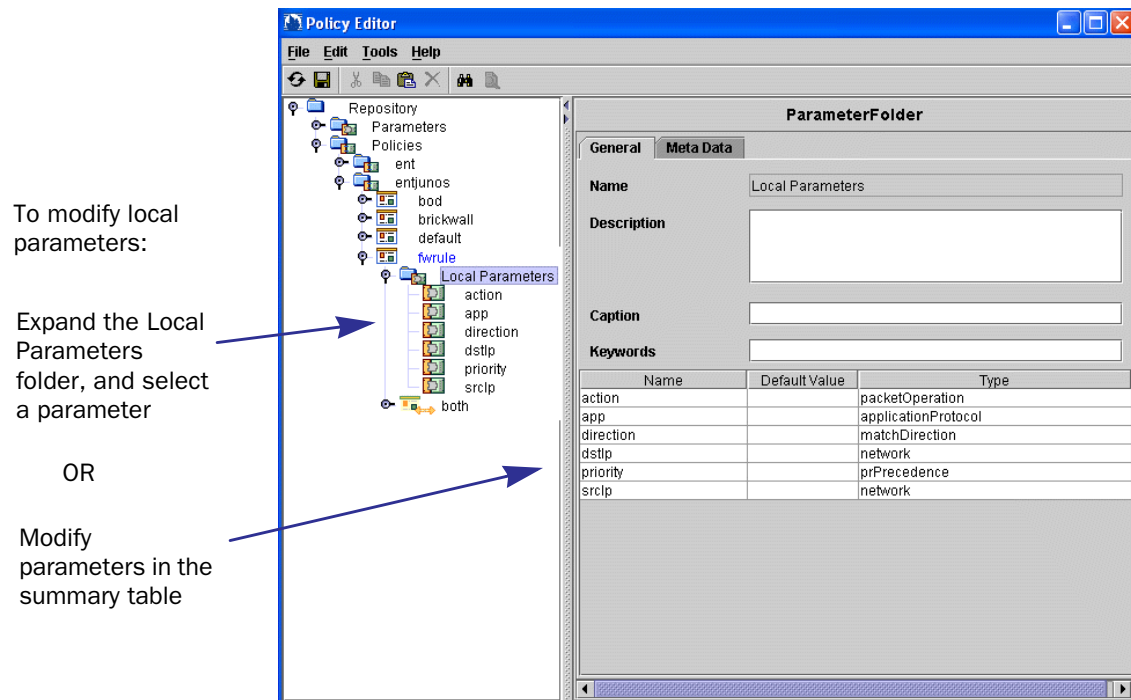
Type

- Type of attribute for which you can use the parameter. The parameter type determines where you can use the parameter.
- Value—Select from drop-down list. See Table 23 on page 191 for a description of parameter types.
- Default—No value

Creating and Modifying Local Parameters in Policy Editor

When you create a policy group, Policy Editor automatically creates a Local Parameters folder inside the policy group. (See Figure 29.) All local parameters that you create within the policy group are added as objects in the Local Parameters folder. The ParameterFolder pane also displays a summary table of all local parameters in the policy group.

When you perform a SaveAs operation to a directory server, the SRC software does not check the names of local parameters in the policy group with names of existing global parameters in the directory server. After the SaveAs operation is complete, the directory server may contain global parameters and local parameters with the same names. You will not receive any messages about duplicate names. If local and global parameters have duplicate names, the policy engine uses the local parameter definitions.

Figure 29: Modifying Local Parameters

To modify parameters from the summary table:

- Double-click on a parameter name entry to display the Parameter content pane. Fill in the fields as described in *Parameter Definition Fields* on page 205.
- Type a new value in a Default Value field.
- Click on an entry in the Type column to display a drop-down list of types.

Creating a Local Parameter

There are two ways to create a local parameter.


From the Local Parameters folder:

1. Right-click the **Local Parameters** folder, and select **New > Parameter**.
2. In the Parameter Name Dialog box, assign a name to the parameter. This is the name that appears in Policy Editor drop-down menus.

The Parameter pane appears.

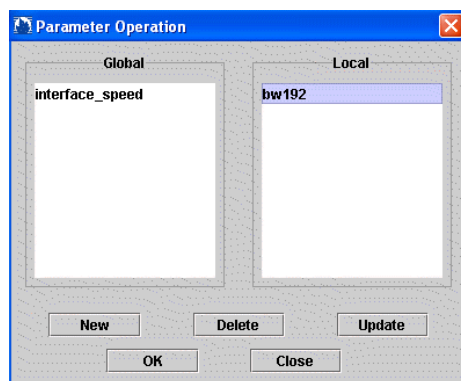
3. Fill in the fields as described in *Parameter Definition Fields* on page 205.

Policy fields for which you can use parameters have a  icon next to them. To create a local parameter from within a policy:

1. Click the  icon next to the field for which you want to create a local parameter.

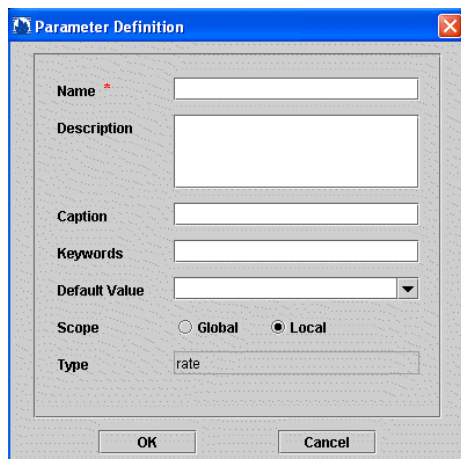
The Parameter Operation dialog box appears.

Existing local and global parameters are listed. You can add, delete, or modify local parameters from this dialog box. You can also add global parameters.



2. Click **New**.

The Parameter Definition dialog box appears.



3. Fill in the fields as described in *Parameter Definition Fields* on page 205.