

Chapter 12

Installing Licenses for SRC Software on Solaris Platforms

This chapter describes how to install SRC software licenses on Solaris platforms. Topics include:

- Before You Install an SRC License on a Solaris Platform on page 101
- Installing an SRC Pilot License on a Solaris Platform on page 102
- Installing an SRC Server License on a Solaris Platform on page 104
- Command Options for the SRC `instlic` and `licchk` Commands on page 105

Before You Install an SRC License on a Solaris Platform

Before you install a license:

1. Make sure that the directory server is running.
2. Make sure that the appropriate local properties are configured:
 - Pilot license—If you plan to use the **instlic** command to install the license (recommended), ensure that the SAE local properties have been configured.

See Chapter 35, Setting Up an SAE on a Solaris Platform.

- Server license
 - Ensure that the SAE local properties have been configured.
- See Chapter 35, Setting Up an SAE on a Solaris Platform.*
- Configure initial properties for the license server.

See Setting Up the SRC License Server on page 95.

Installing an SRC Pilot License on a Solaris Platform

After you configure the SAE local parameters, you can install a pilot license in the directory with either the **instlic** command (recommended) or SDX Admin.

You can also install a pilot license from the SRC CLI, see *Chapter 10, Installing Licenses for C-series Controllers*.

Installing a Pilot License by Using the **instlic** Command

To install the pilot license:

1. Save the pilot license provided by Juniper Networks into a text file in the desired directory.
2. Issue the **instlic** command.

/opt/UMC/sae/etc/instlic

This command has the following syntax; see Table 10 on page 105 for details on the syntax:

```
instlic [-h <ldapHost>] [-D <bindDN>] [-b <baseDN>]
[-w <password>] [-W ] <fileName>
```

The installation script reads the license from the specified file.

The following sample command specifies a nondefault host address and base DN, prompts you for the password, and establishes the license contained in the *pilot.txt* file as the license:

```
/opt/UMC/sae/etc/instlic -h 10.25.2.4
-D cn=umcadmin,o=SDXbase -W pilot.txt
```

Installing a Pilot License by Using SDX Admin

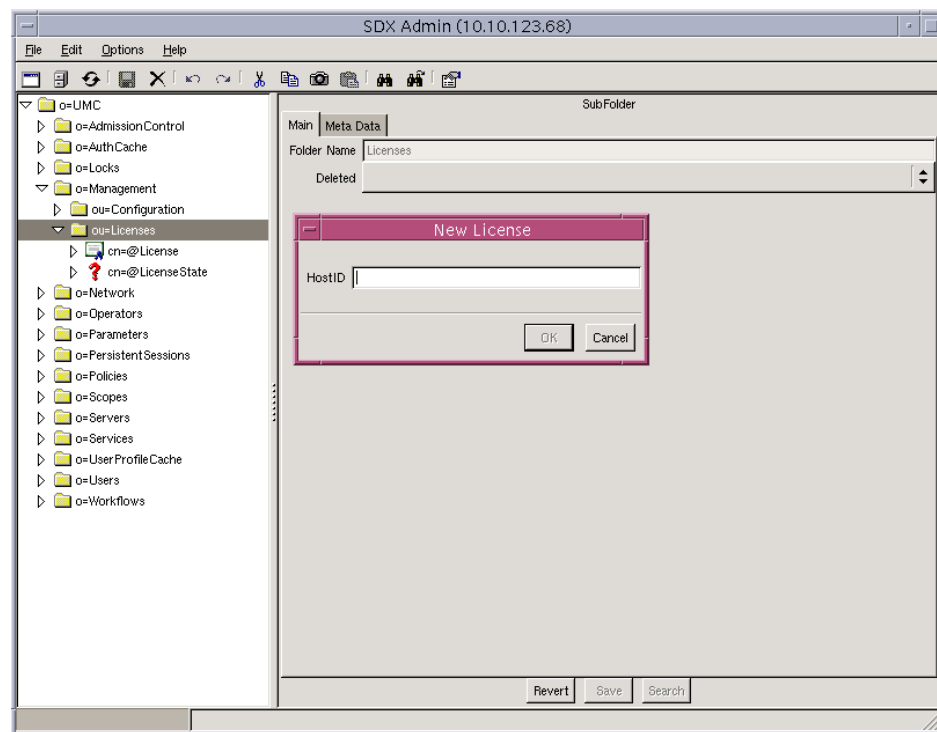
To install the pilot license:

1. Start SDX Admin.

For information about starting and using SDX Admin, see *Chapter 43, Using SDX Admin*.

2. In the navigation pane of SDX Admin, expand the **Management** folder, right-click **Licenses**, select **New**, and click **License**.

The New License dialog box appears.

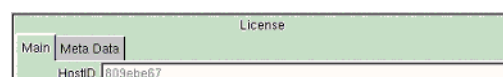


3. Enter the host ID value.

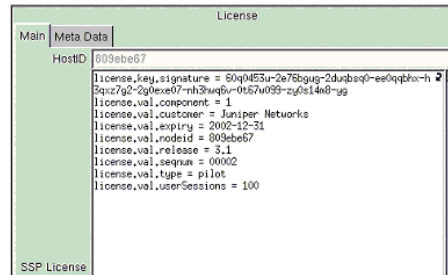
See the *Chapter 8, Overview of SRC Licenses*.

4. Click **OK**.

The value appears in the HostID field of the Main tab of the License pane.



- Enter the license provided by Juniper Networks in the SSP License field of the Main tab of the License pane, and click **Save**.



- Repeat Steps 3 and 5 for each host with its related host ID and license.

Installing an SRC Server License on a Solaris Platform

After you configure the SAE local properties and you configure initial properties for the license server, you can install a server license.

To install a server license in the directory:

- Issue the **instlic** command from the license server's installation directory.

cd /opt/UMC/licsvr/etc

This command has the following syntax; see Table 10 on page 105 for details on the syntax:

```
instlic [-h <ldapHost>] [-D <bindDN>] [-b <baseDN>]
[-m ] [-w <password>] [-W ] <fileName>
```

The **instlic** command applies the name **@License** to the first license you install; this is the master license. Any subsequent licenses that you install are automatically named by the command as **Lic- <# >**; **<# >** is a sequence number starting at 0. SAE clients read the address of the license server from the master license.

When you upgrade the SRC software to a higher release, you must replace the current master license with a new master license obtained from Juniper Networks. The new master license will incorporate the version number of the higher release and a new signature. The **instlic** command automatically renames the old master license to **Lic- <# >** to retain it as a secondary license.

The following sample command specifies a nondefault host address and base DN, prompts you for the password, and establishes the license contained in the *second.txt* file as the master license:

```
/opt/UMC/licsvr/etc/instlic -h 10.25.2.4
-D cn=umcadmin,o=SDXbase -m -W second.txt
```

Verifying a License

After you install the license, you can use the **licchk** command to verify the license installation and to verify connectivity to the SRC license server. The command returns the license's relative distinguished name (RDN) and its attributes to a specified file. This command has the following syntax; see Table 10 on page 105 for details on the syntax:

```
licchk [-h <ldaphost>] [-D <bindDN>] [-b <baseDN>]
      [-w <password>] [-o <outputFile>]
```

If you have configured nondefault bind credentials (in the LDAP Connection dialog box) for the directory server, then you must use one or more of the command options to specify the attribute value.

The following sample command specifies a nondefault host address, base DN, and password:

```
/opt/UMC/sae/etc/licchk -h 10.13.1.5 -D cn=umcadmin,o=SDXbase -w acp45
```

If the directory server uses the default bind credentials, you can simply issue the following command:

```
/opt/UMC/sae/etc/licchk
```

Command Options for the SRC instlic and licchk Commands

Table 10 defines the options available to the **instlic** and **licchk** commands.

Table 10: Options for the instlic and licchk Commands

Option	Available to Command	Description
-b <baseDN>	instlic, licchk	Specifies the distinguished name of the base object in the LDAP schema of the directory server. The default value is read from <i>/opt/UMC/licsvr/etc/bootstrap.properties</i> .
-D <bindDN>	instlic, licchk	Specifies the distinguished name used for binding to the directory server. The default value is read from <i>/opt/UMC/licsvr/etc/bootstrap.properties</i> .
<fileName>	instlic	Required. Specifies the name of the text file that contains the license from Juniper Networks. You can specify either only a filename relative to the current directory or an absolute path that includes the filename.
-h <ldaphost> : <port>	instlic, licchk	Specifies the IP address or hostname, and optionally the port number of the directory server. The default value is read from <i>/opt/UMC/licsvr/etc/bootstrap.properties</i> .
-H	instlic, licchk	Lists the command options.
-m	instlic	Installs the license as the master license (@License). The previous master license is renamed to Lic- <#>. You might use this option if the location of the license server has changed. Option not available for pilot licenses.
-o <outputFile>	licchk	Specifies the name of the file in which you store the results of the licchk command.

Table 10: Options for the instlic and licchk Commands (continued)

Option	Available to Command	Description
-w <password>	instlic, licchk	Specifies the bind password for authentication with the directory server. The default value is read from <i>/opt/UMC/licsvr/etc/bootstrap.properties</i> .
-W	instlic, licchk	Causes the command to prompt you for the password