

Move to AI-Native Networking Faster with Juniper Global Services

Tap our expertise to empower smooth deployment and network operations for your team

Juniper is transforming how our customers realize the value of AI-native networking through a suite of collaborative services designed to reduce deployment risk and dramatically shorten time to value.

[Learn how →](#)

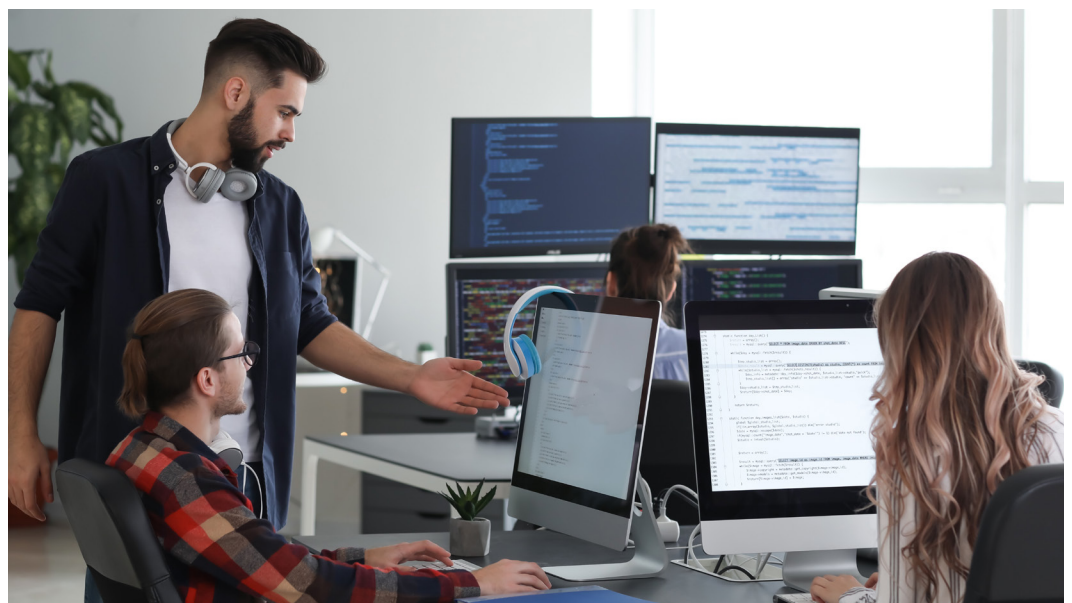
Challenge

IT needs a deployment accelerator pedal

The only constant for IT teams is change, and the pace of change is accelerating. For IT leaders, the time between a technology solution decision and deployment can be daunting. The faster the solution is turned up, the faster an organization and its IT teams can reap the rewards.

Installing new products, software, and systems requires methodical planning and precise execution. Employees and management usually notice only if deployments go wrong, so it's crucial to plan and execute with best practices and practical expertise to avoid disruptions and delays.

Plus, IT teams must navigate new equipment and systems, and new processes may be required. How can the team quickly uplevel its skills and knowledge? What are the best practices for accelerating deployment? How can the team minimize risk during the rollout or migration? How can seamless operation be ensured from Day 2 onward?



The capabilities you need



Accelerate deployments with Juniper services

From hardware to software to processes, Juniper stands ready to work with you in each stage of your journey to the Self-Driving Network™ and meet the end-to-end requirements for your network, applications, and team. Partner with Juniper to bring the power of Mist™, Juniper's AI-native networking platform, to your network and organization faster—from design through deployment and into ongoing operations.

Every step of the way, Juniper offers a set of services and expertise that will allow you to move quickly with more confidence and shorten the time to value. With experience from many successful installations, Juniper deployment services have helped roll out solutions up to 9x faster.

Juniper Validated Designs

Juniper Validated Designs (JVDs) help cut through complexity with detailed, fully validated, end-to-end hardware and software designs. Each JVD targets a specific deployment use case across the network and includes itemized components, installation processes, and a cutover checklist.

Adapted to your requirements

Juniper tailors deployment services to fit your company's and team's needs. With a focus on rapid and minimally disruptive solution deployments, Juniper experts will keep projects on track. If a packaged service does not fit your organization's requirements, Juniper can usually customize and quote a mix of service elements that will.

Juniper is transforming how our customers realize the value of Mist through a suite of collaborative services designed to lower deployment risk and dramatically accelerate time to value.

How it works

AIOps for every step of your journey

Juniper delivers the power and efficiency of AI for IT operations (AIOps) in networking to transform IT teams and processes. From preparation to deployment through adoption and growth, Juniper is available every step of the way, offering knowledge transfers and best practices to ensure your team is ready to excel on Day 2 and beyond.



Core features/capabilities

The Mist platform

9x
faster time to value

90% fewer
trouble tickets

85% fewer
onsite visits

Prepare

Discovery Workshop

Juniper experts will listen to your organizational needs and guide your team through a discovery workshop to achieve alignment on project objectives, size, and scope. They will work with you to establish a project timeline that meets your company's goals.

Tailored design/configuration

Based on the Discovery Workshop and applicable JVDs, Juniper will create templates or configurations that match your organization's unique requirements.

Implementation plan

Juniper creates the execution steps, checklists, and validation tests to help implement the solution design successfully with minimized disruption.

Deploy

Cutover/maintenance window support

Juniper engineers who understand your deployment can be available during maintenance windows to support your team and help troubleshoot issues in real time during cutover, depending on the service selected.

Tools and automation

Juniper leverages our tools, automation, and experience to help accelerate implementation tasks and avoid errors and disruptions.

Test and validation

Juniper establishes tests that validate the design, ensure configurations are deployed as planned, and network functions operate as desired.

Adopt

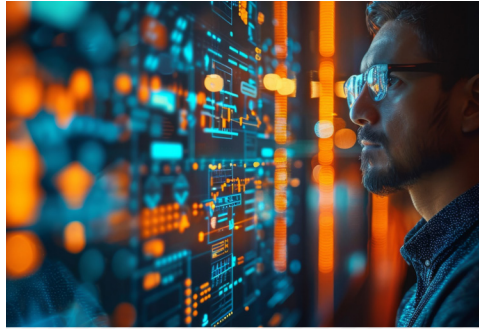
Knowledge transfer workshop

Ensure the IT team is ready to run their new AI-native network by way of a detailed knowledge transfer about your specific deployed solution, its configuration, and how to manage ongoing operations.

Post-deployment support

To ensure that newly deployed solutions are operating as planned, Juniper's post-deployment services can include extra time after cutover, operational optimizations, or advanced capability support.

Derisking how we deliver



Mist, Juniper's AI-native networking platform, delivers secure, high-performance, reliable infrastructure that scales to match your needs



Juniper's deployment services are crafted to speed up the design, planning, and implementation of our solutions, derisking and dramatically shortening your time to value

Our advantage

Juniper's unique benefits

With Juniper deployment services, AI-native experts collaborate with you to adapt Mist to your specific network and application requirements, helping you minimize risk and accelerate time to value.

Campus and branch

Deploy Juniper solutions for wired, wireless, and SD-WAN networks with confidence and speed using [Juniper AI Accelerate Service](#), available in two options:

- Juniper AI Accelerate LAN for the Juniper Wired and Wireless LAN solution
- Juniper AI Accelerate WAN for the Juniper SD-WAN solution

Both options are delivered remotely with assistance for design, deployment, and accelerated rollout activities.

In addition, Juniper offers innovative [AI Care Services](#) that use AI insights to proactively support wireless, wired access, and SD-WAN solutions. They include targeted deployment assistance, such as a device onboarding helpdesk, knowledge transfer webinars, and design guidance.

[AI Ultimate Care Service](#), Juniper's top-end white-glove tier, helps you get the most from our [Marvis® AI](#) engine. Together, you and your single-point-of-contact service advocate build a customer success plan, and the advocate helps drive achievement of those goals. It provides comprehensive deployment and proactive support services, including AI Accelerate Service for rollout assistance.

Juniper AI Ultimate Care uses campus and branch cloud services dashboards and available information like service-level expectations (SLEs), [Marvis Actions](#) from the [Marvis® AI Assistant](#), and [Juniper® Premium Analytics](#) proactively for visibility into your network's health. Your assigned technical liaison identifies critical network issues that require action and guides your team through the resolution process.

Data center

[AI Data Center \(AIDC\) Deployment Services](#) are specifically targeted to help you build your data center network for demanding AI workloads. Juniper's experts will help you design, implement, validate, and optimize your inference, compute, and storage networks to extract more value from your AI infrastructure and people investments using your own AI workloads. Run more cost-effectively on Ethernet with your choice of GPU vendors.

[Data Center Deployment Services](#) employ Juniper consultants to blueprint, validate, and deploy new data center network infrastructure using [Apstra Data Center Director](#). Four remotely delivered options are available:

- **Juniper Data Center Deployment Service** for greenfield deployments
- **Juniper Data Center Optimized Deployment Service** adds expert assistance with post-deployment advanced operations to the service above
- **Juniper Data Center Deployment Service** (migration-ready) and **Juniper Data Center Optimized Deployment Service** (migration-ready) add expert assistance with migration plans and initial migration tasks to each of the above services, respectively, for a legacy data center deployment that requires a side-by-side migration of existing workloads

WAN

[Juniper Routing Director Deployment Services](#) provide a fast track for enabling business outcomes with Juniper WAN solutions. There are two service levels available with an optional add-on, all delivered remotely:

- **Juniper Routing Director Base Deployment Service** covers device onboarding, device management, observability, and trust use cases
- **Juniper Routing Director Premium Deployment Service** covers the use cases from the base service plus service orchestration enablement
- **Routing Active Testing Enablement** is available as an optional add-on

Security

[SRX Series Deployment Services](#) gives your organization access to a Juniper Security Services professional with extensive knowledge of the [Juniper SRX Series Firewalls](#) and advanced security features. The service employs time-tested methodologies to speed up rollout and eliminate errors.

Depending on your configuration needs, Juniper offers both basic and advanced levels of SRX Series Deployment Service. Note that cutover maintenance window support and a knowledge transfer workshop are optional add-ons for these services.

If you're stepping up to industry-leading efficacy against cyber threats from a legacy solution, then [Juniper's SRX Series Firewall Migration Service](#) can help by using specialized tools and methodologies that simplify the move from your old configurations and policies.

Why Juniper

About Juniper

Juniper Networks is leading the convergence of AI and networking. Mist™, Juniper's AI-native networking platform, is purpose-built to run AI workloads and simplify IT operations, assuring exceptional and secure user and application experiences—from the edge to the data center to the cloud. Additional information can be found at www.juniper.net or connect with Juniper on [X](#) (formerly Twitter), [LinkedIn](#), and [Facebook](#).

More information

Learn more about Juniper's services

To learn more about Juniper Global Services and to access technical datasheets, guides, and documentation, [visit our website](#).

Take the next step

Connect with us

Learn how we can build what's next.

[Contact us](#) →

Explore solutions

Discover Juniper's solution practice.

[Explore more](#) →

Read case studies

See how we help unlock growth.

[Case study](#) →

More insights

Get the latest news delivered weekly.

[Subscribe](#) →