

Bring AI to Life

AI-Driven Enterprise 新世代智慧網路

楊正言 Prado Yang
資深技術經理, Juniper Networks

The Access Network must Adapt to Changing Times



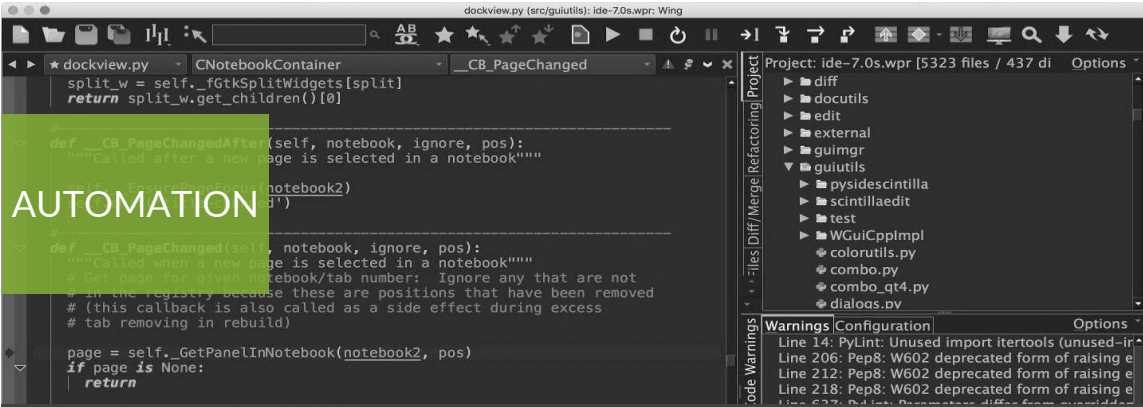
ASSURANCE

Business critical services require more predictable, reliable, and measurable networks



INSIGHT

“Up” is not the same as “good”



AUTOMATION

Machines should configure machines



RELEVANCE

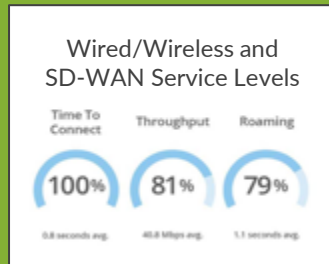
Deliver personalized experiences based on location, integrate with IoT

WIRED, WIRELESS DEVICES SOARING → AI IS CRITICAL FOR IT OPS

Juniper is Building the AI-Driven Enterprise

Unique Juniper Advantages

Client and application
level visibility



Modern cloud
with open APIs



AI-driven operations
and support



Juniper
Connected Security



10

Of the Fortune 10 use Juniper

>40%

Of the Fortune 500 use Juniper

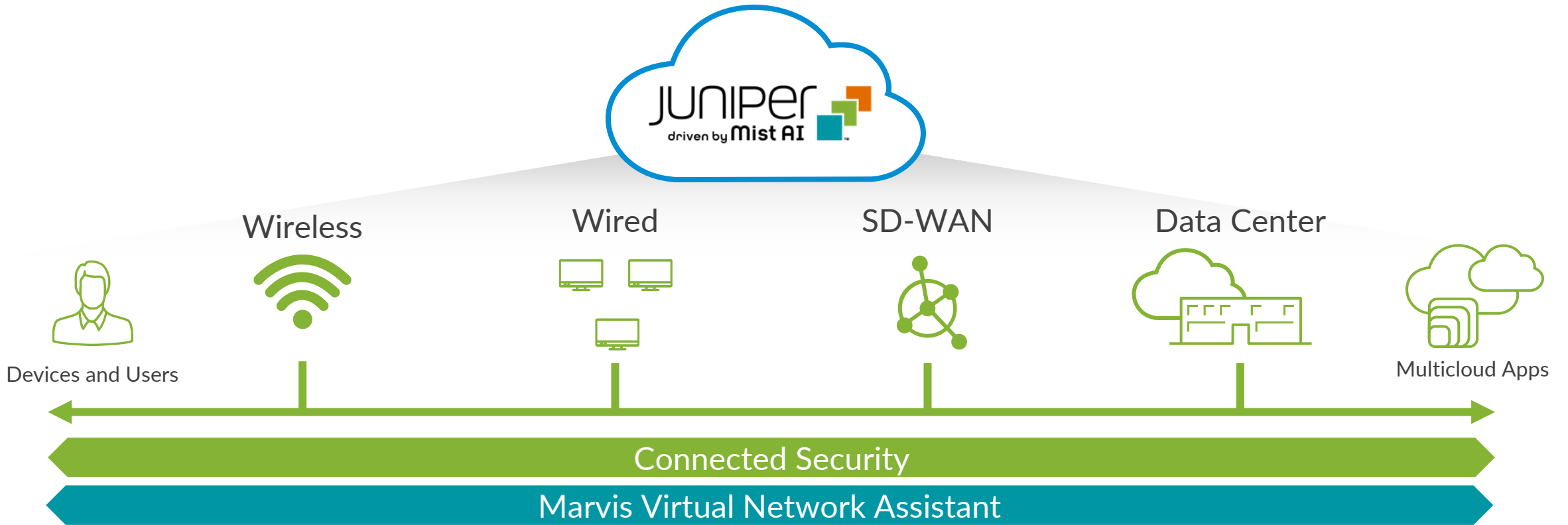
48

Of the Top 100 retailers use Juniper

5

Of the Top 10 Service Providers are running managed services with Juniper

Experience-First Networking from Client-to-Cloud



Juniper-Mist AI is leading a new era of IT with simplified operations, unprecedented scale, and the best user experiences from client-to-cloud.

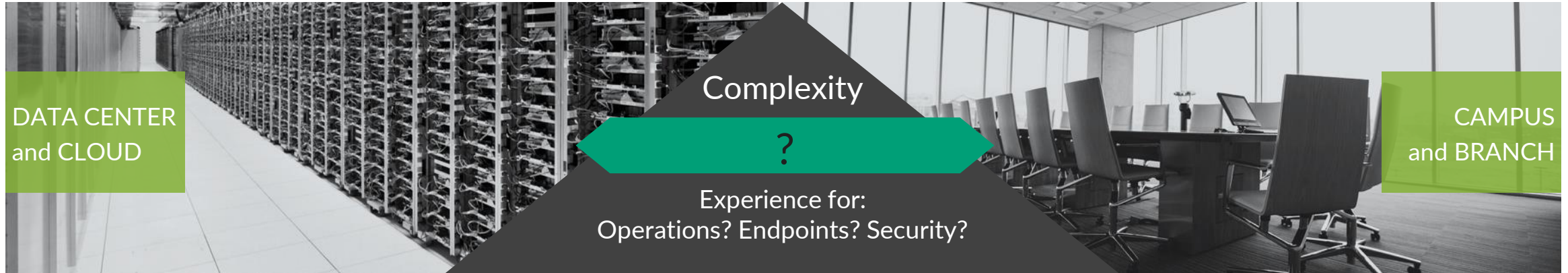
Bring AI to Life

- **What is AI for?**
- **AI-Driven Campus**
- **Wired & Wireless Assurance**
- **WAN Assurance**
- **Marvis Virtual Network Assistant**
- **Summary**

What is AI for?



Where Does AI Make a Difference?



- Consistent workloads
- Controlled environment
- Known connectivity
- Experience defined at the level of aggregate service

Predictable & Uniform

- Diverse devices
- Bad actors and unknown people and devices
- Diverse and hybrid connectivity
- Experience defined at the level of every user | endpoint

Unpredictable & Variable

DIVERSE INFRASTRUCTURE leads to DIVERSE OPERATIONS

AI for IT

The AI-Driven Enterprise

ABSTRACTED CONTROL



- SDN management of a fleet, not each device
- Centralized telemetry and analytics
- Cloud is optimal for AI storage / compute

AUTOMATED WORKFLOWS



- Simplified and streamlined workflows
- API programmable to integrate systems
- AI virtual assistants facilitate workflows

AI-DRIVEN EXPERIENCE and INSIGHTS



- Elevate ops and user experience
- Automatic troubleshooting and regulation
- Correlate, predict and identify patterns

WHY A.I. ? *“experience is the new uptime”*

AI for IT: What Is It?

SEE



- Collect data
- Structure, optimize and filter
- Analyze and visualize data

KNOW



- Processing and data science
- Machine learning and deep learning
- Identify and signal problems or patterns

DO



- Automate response/decisions
- Automatically regulate & remediate
- Raise actionable insights and predictions

WHAT IS A.I. ?



If a typical person can do a mental task with less than one second of thought, we can probably automate it using AI.

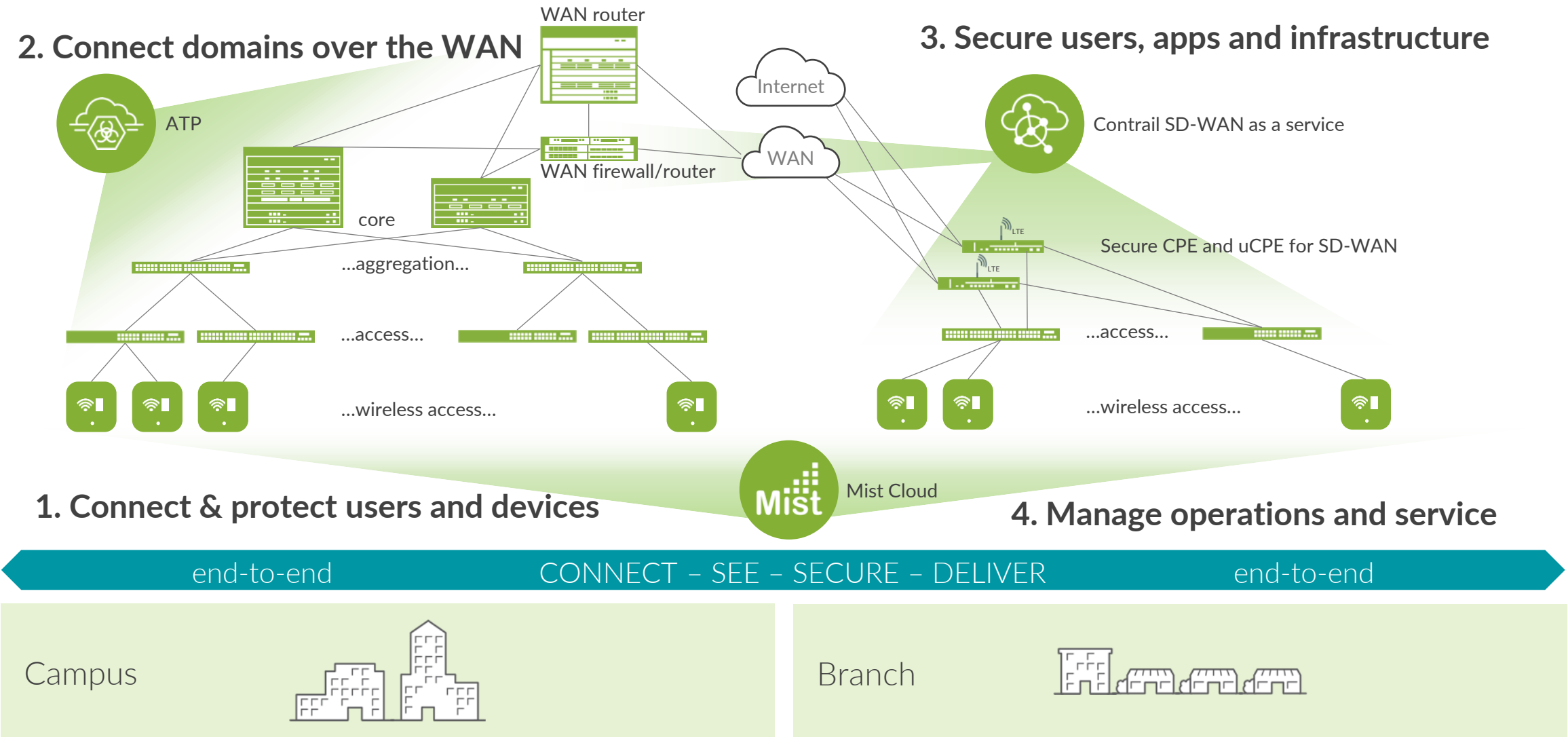
- Andrew Ng
Director of Stanford AI Lab



Artificial Intelligence is the science of making machines do things that would require intelligence if done by people.

- Marvin Minsky
Founder of the MIT AI Lab

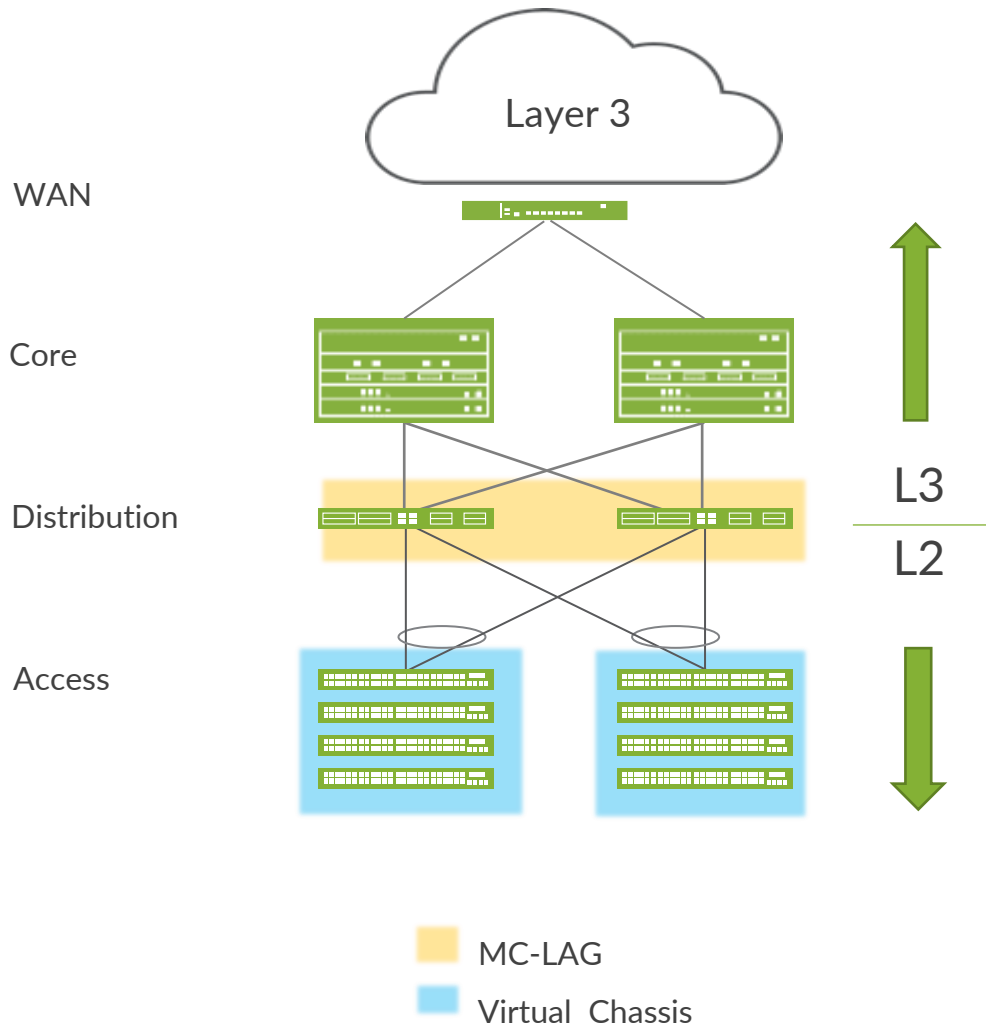
AI-Driven Enterprise – It's End to End



AI-Driven Campus

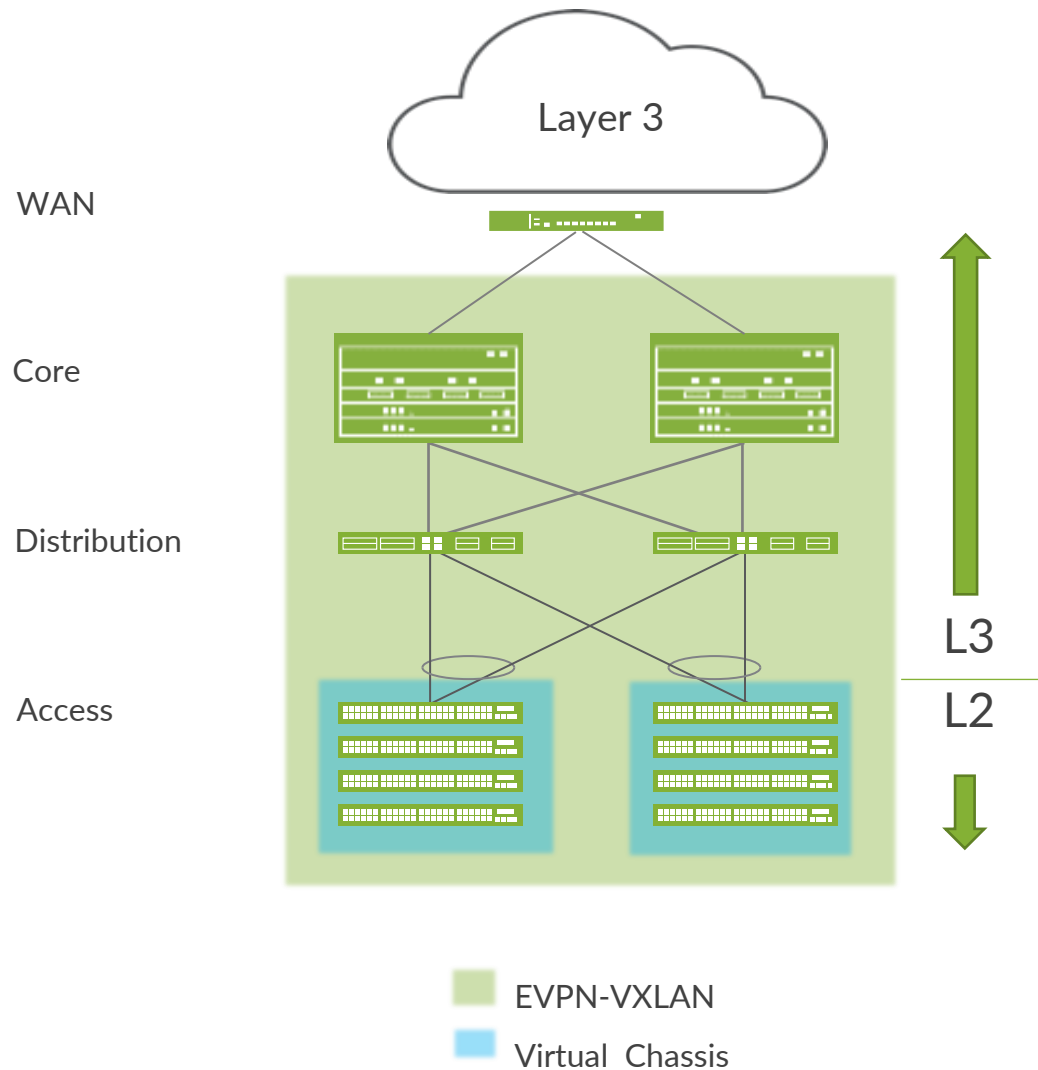


Problems with Campus Networks Today



- 1) Layer 2 user devices connecting to layer 3 Network
- 2) Proprietary technologies to eliminate STP loops
- 3) Non-flexible and non-scalable networks
- 4) Not designed for Mobility and IOT
- 5) Increasing number of ACLs on every device

EVPN-VXLAN Solves Many Campus Problems



- ~~1)~~ Layer 2 user network connecting to layer 3 internet
1) Layer 2 overlay network over layer 3
- ~~2)~~ Proprietary technologies to eliminate STP
2) Standards based technology
- ~~3)~~ Non-Flexible and non-scalable networks
3) Flexible and scalable
- ~~4)~~ Not designed for Mobility and IOT
4) Fast convergence and microsegmentation
- ~~5)~~ Increasing number of ACLs on every device
5) Network wide Group based Policies (GBP)

Campus Fabrics



Elastic network design

Build fail-safe network

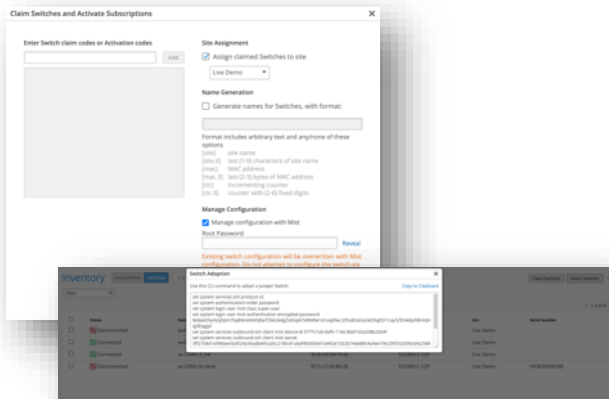
Designed for future needs

Automating Every Step of the Way

The best access layer experience

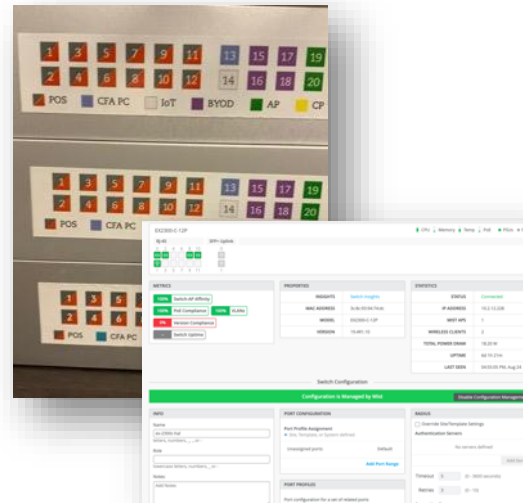
Day 0: Provision

- Single click activation via ZTP for greenfield
- Adopt switches for brownfield



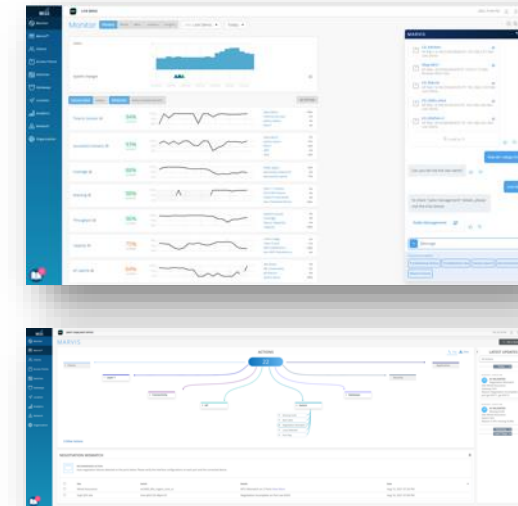
Day 1: Deploy

- Template based configuration
- Port/interface profiles
- Color/colorless ports

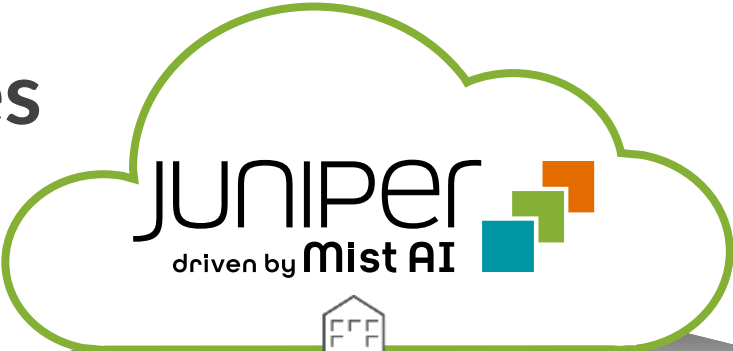


Day 2+: Operate

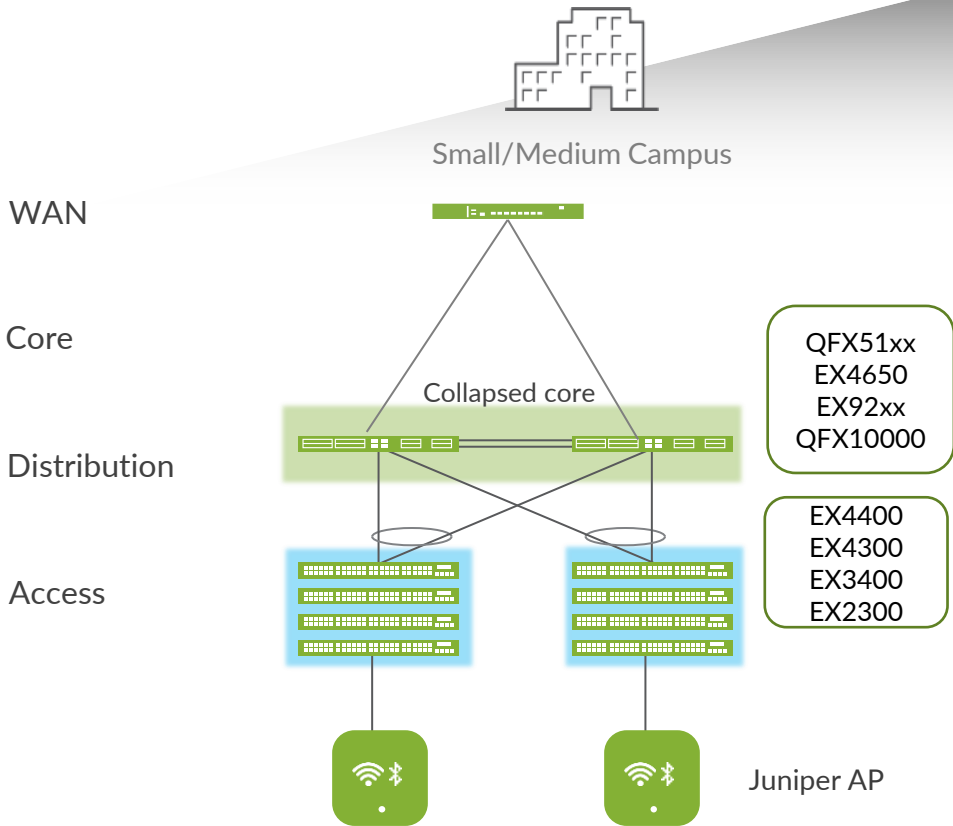
- Alert
- Monitor
- Troubleshoot



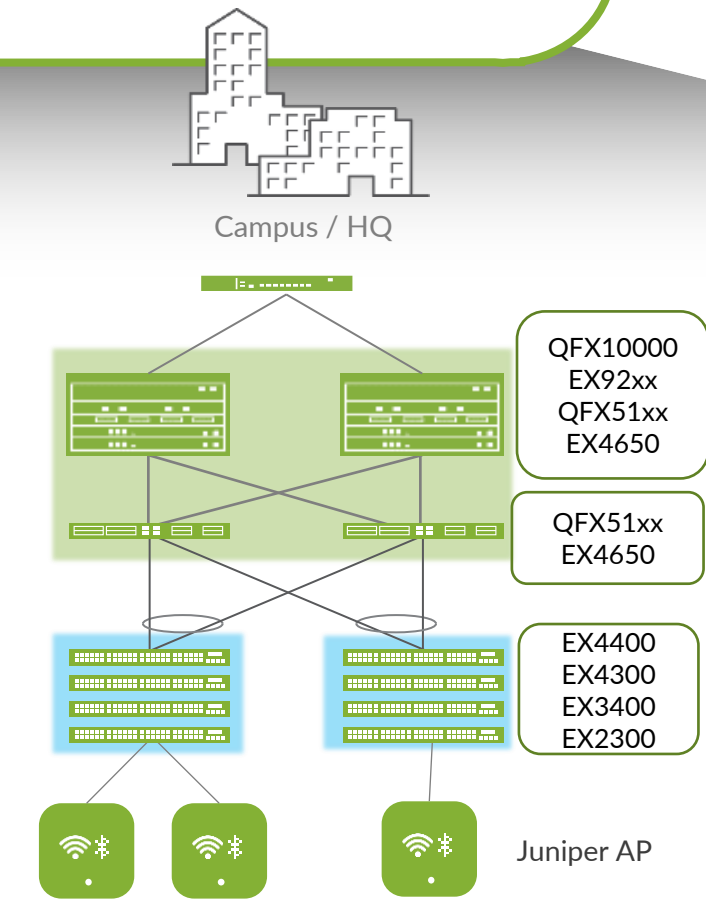
Campus Architectures



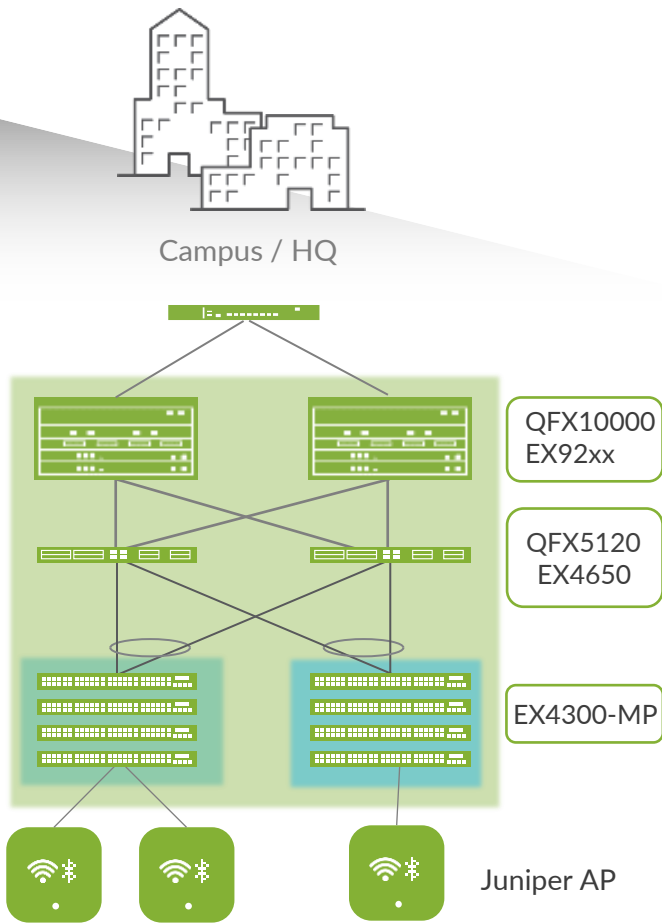
- EVPN-VXLAN
- Virtual Chassis



EVPN Multihoming



Campus Fabric Core-Distribution



Campus Fabric IP Clos

Building an AI-Driven Campus Fabric

Describe the **WHAT**

Software delivers the **HOW**

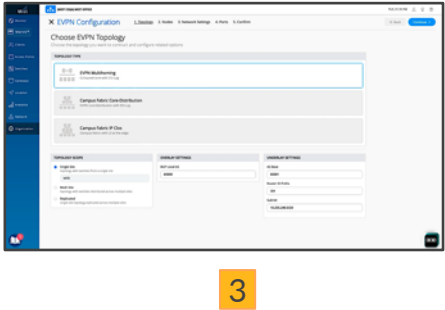
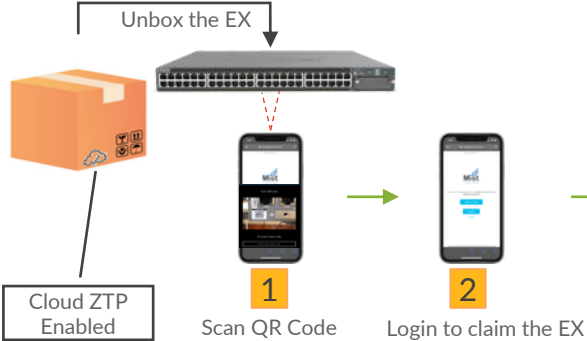
Know **WHEN** and **WHY**



 **Design**

 **Deploy**

 **Operate**



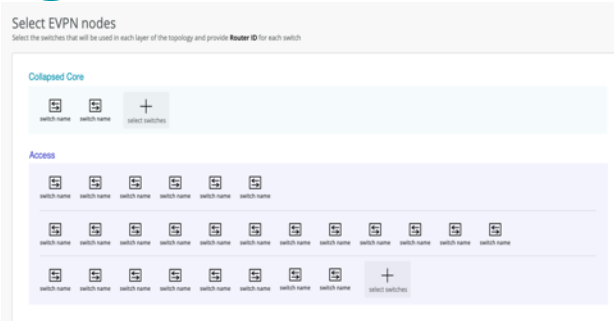
Design and deploy an AI-driven Campus Fabric



Troubleshoot and Manage with Marvis and Mist AI

Campus Fabric Deployment

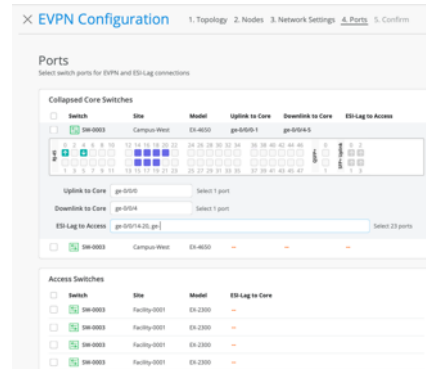
1



Choose the topology and allocate device roles

- Define the intent for the topology definition (IP-Clos, Multi-homing etc)
- Choose device roles – access, distribution, core

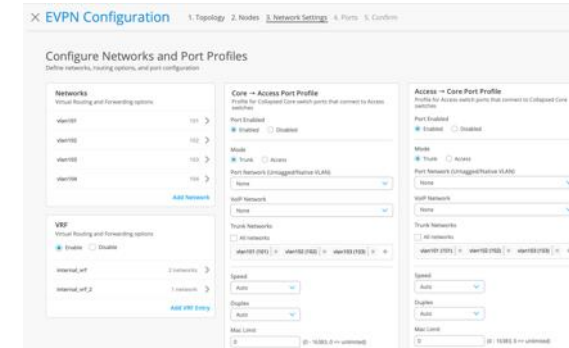
2



Define Physical Connections

- Provide the physical connectivity between – core/distribution and access devices

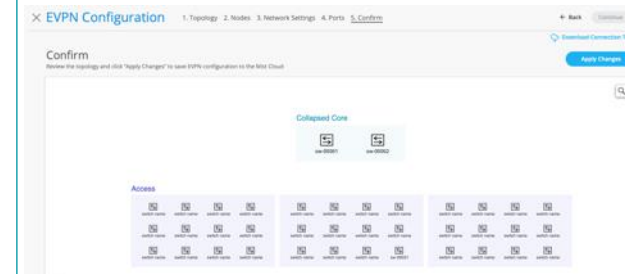
3



Define Networks of Interest

- Configure the user networks

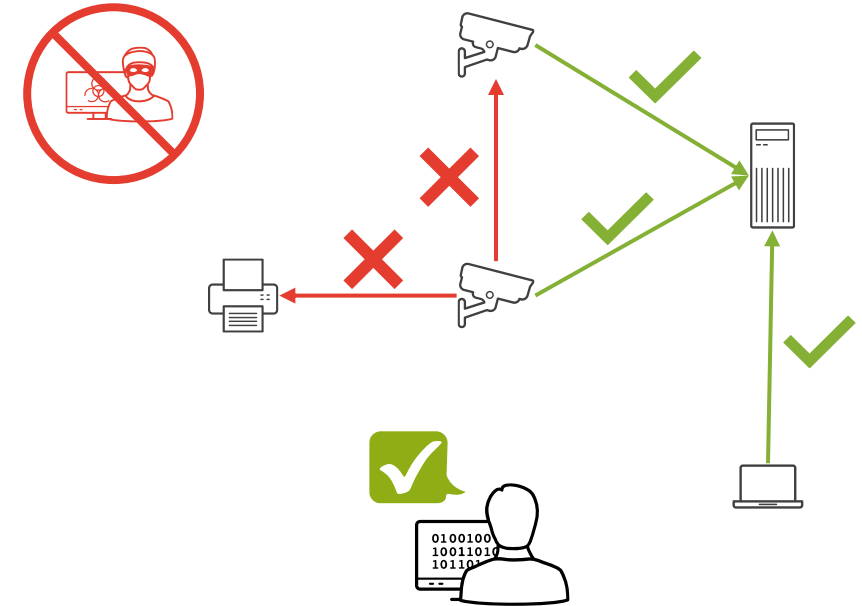
4



Apply the intent

- Verify, apply and confirm the intent of provisioning the fabric

Standards-based Microsegmentation



Group Based Policies (GBP)

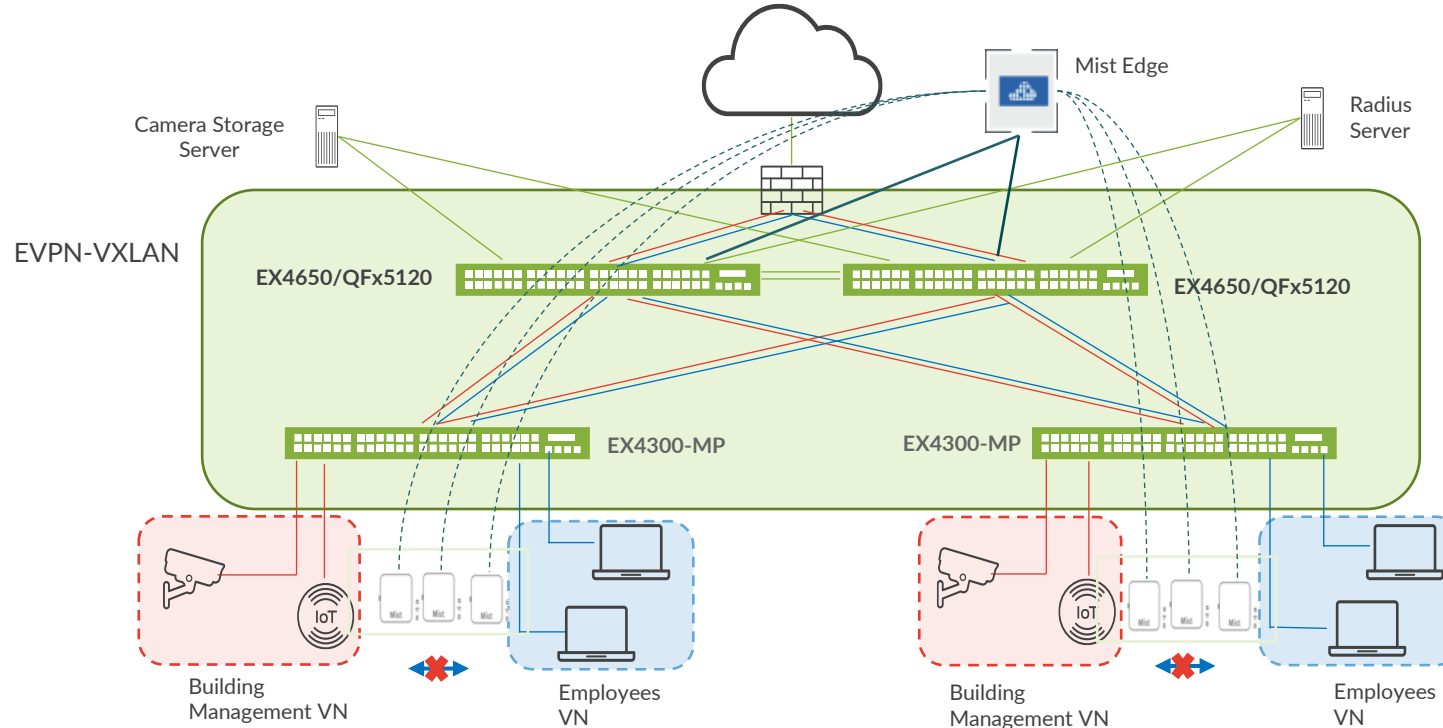
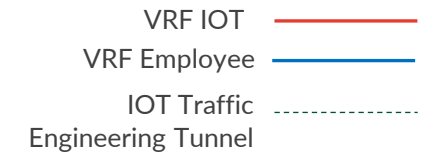
- Leverage underlying VXLAN infrastructure
- Granular access policy & controls
- Location agnostic end to end security

Outcomes

- Consistent security policies across the network
- Ability to block lateral threats
- Reduce ACLs



Identity-Based Segmentation



VN (Virtual network) First level Segmentation ensures zero communication between forwarding domains. Static or dynamic VLAN and Filter assignment prevents lateral communication within the VN

Access Control

Consistent Policy
User group-based access



Segmentation

Logical segmentation
across business function
Layer 2 or Layer 3

Device Profiling

SD operations
Device fingerprinting
Dynamic VLANs

Wired & Wireless Assurance



Challenges Faced in Unifying the Wired & Wireless

Challenges with traditional networks:

- ⚠ Complexity, devices and data soaring
- ⚠ Existing solutions are for management, not operational efficiency
- ⚠ Wired and wireless networks lack AI assist
- ⚠ Monolithic systems lack cloud agility, elasticity
- ⚠ Incomplete API's limit ability to automate
- ⚠ Reduce risk as employees return to work



Unify the Wired and Wireless

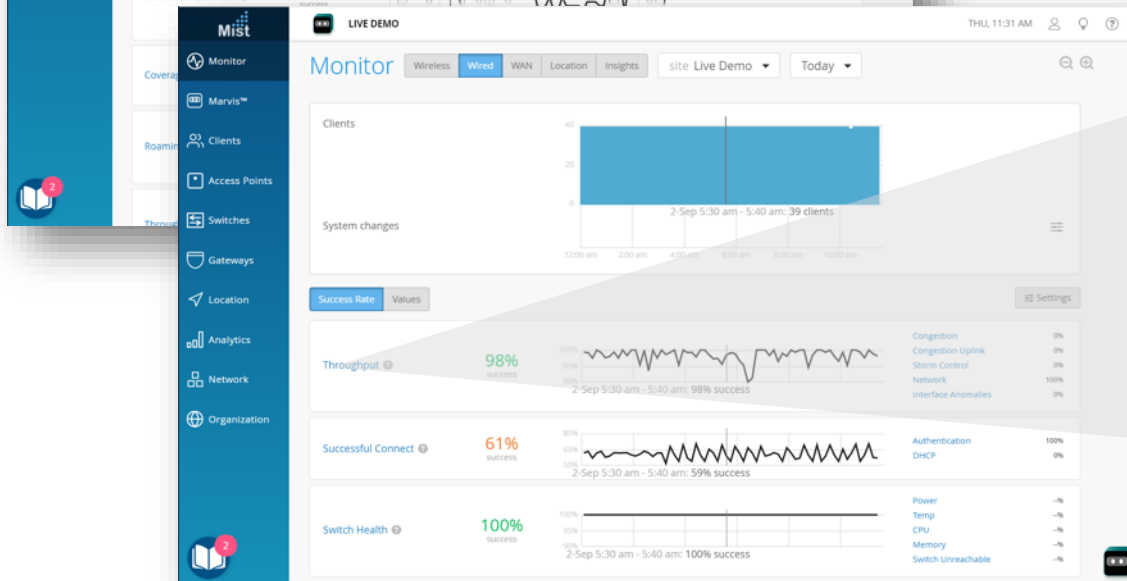
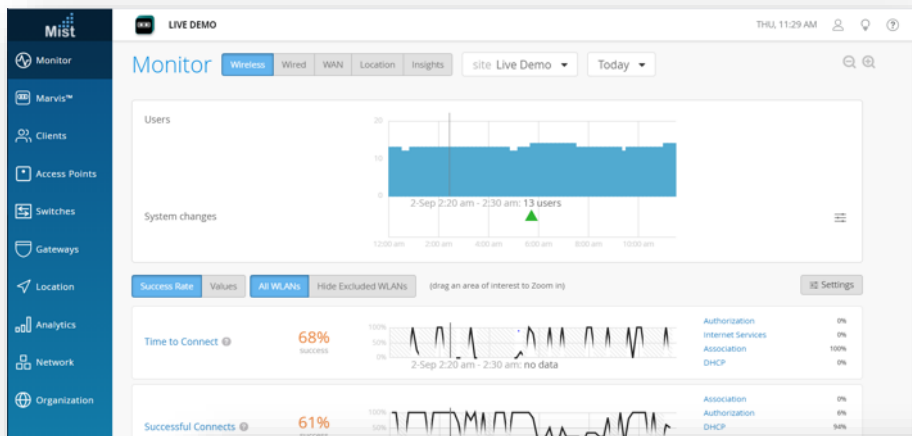
Juniper Mist Solution Benefits

- Deliver great user, device and client experiences through Service Level Expectations (SLEs)
- Build scalable, agile and reliable services with a microservices cloud architecture
- Transform IT with AIOps and support to lower costs
- Deliver a differentiated service through complete 100% programmable APIs
- Mitigate risks with SecIntel to Mist to deliver threat visibility and enforcement

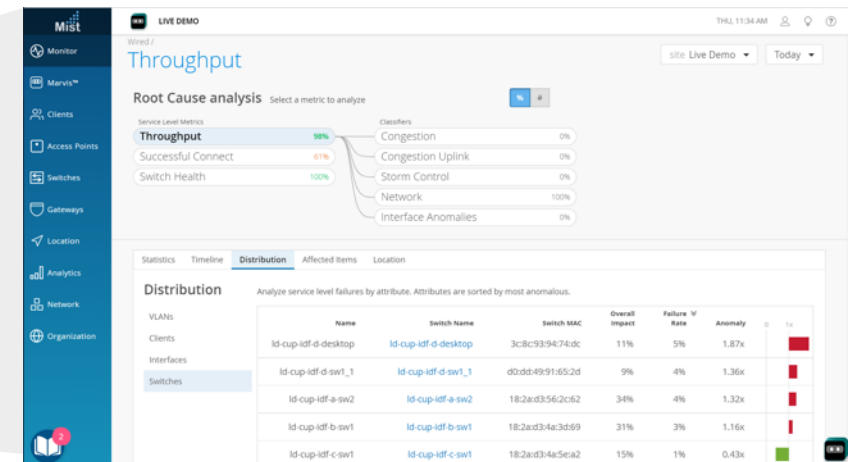


Service Level Expectations (SLEs)

Wi-Fi Assurance & Wired Assurance



- Manage user and device experience; up \neq good
- Measure pre-/post- connection metrics for key wired and wireless criteria
- Deliver proactive anomaly detection to identify and determine root cause



Wired Assurance with Juniper EX Switches

Seamless, Simplified Onboarding with ZTP

- Single click activation for greenfield, adopt switches for brownfield

Template-based Configuration with Device & Port Profiles

- Scale with consistency using static or auto-provisioning for color and colorless ports

Wired User Service Level Expectations (SLEs)

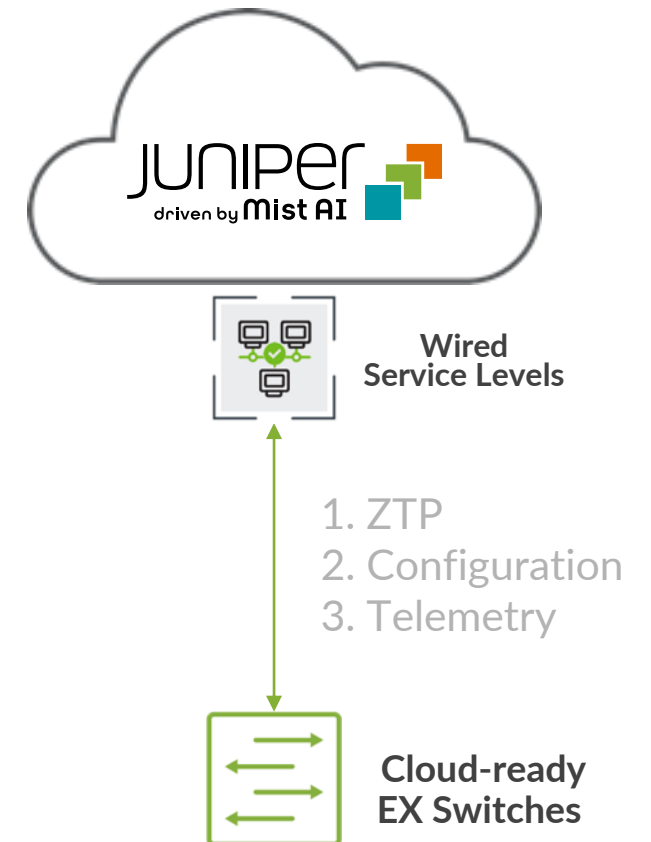
- Throughput, Successful Connects, Switch Health
- AI-Driven Switch Insights (CPU, temp, mem, PoE, interface, fan, power supply, VC port status, etc.)

Switch Events - Correlation

- Configuration changes, system alerts

Marvis Virtual Network Assistant

- Switch intelligence when debugging a user/AP
- Marvis Actions (Adds missing VLANs, fixes misconfigured ports, identifies bad network cables, STP loops)



Wired Assurance Unique Advantages

Amazing User Experiences

- Client Service Level Expectations (SLEs)
- Self-driving Network™
- Add Marvis Virtual Network Assistant

AI-Driven Operations

- Switch insights
- Event correlation
- Add Marvis Actions for self-driving remediation

Automation

- Programmable workflows
- 100% open APIs
- Microservices cloud platform

Full Stack Portfolio

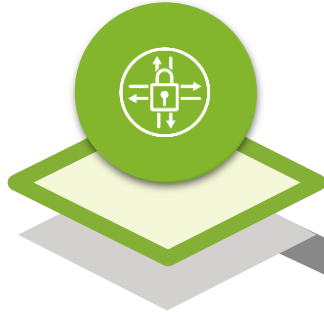
- Driven by Mist AI
- LAN, WLAN, WAN, Security
- Unified experiences and troubleshooting

WAN Assurance



Juniper Brings AI to WAN Transformation

Juniper has been a leader in routing and security since 2004



Secure Routers

Feature-rich SSR provides software and policy orchestration with security



Secure SD-WAN

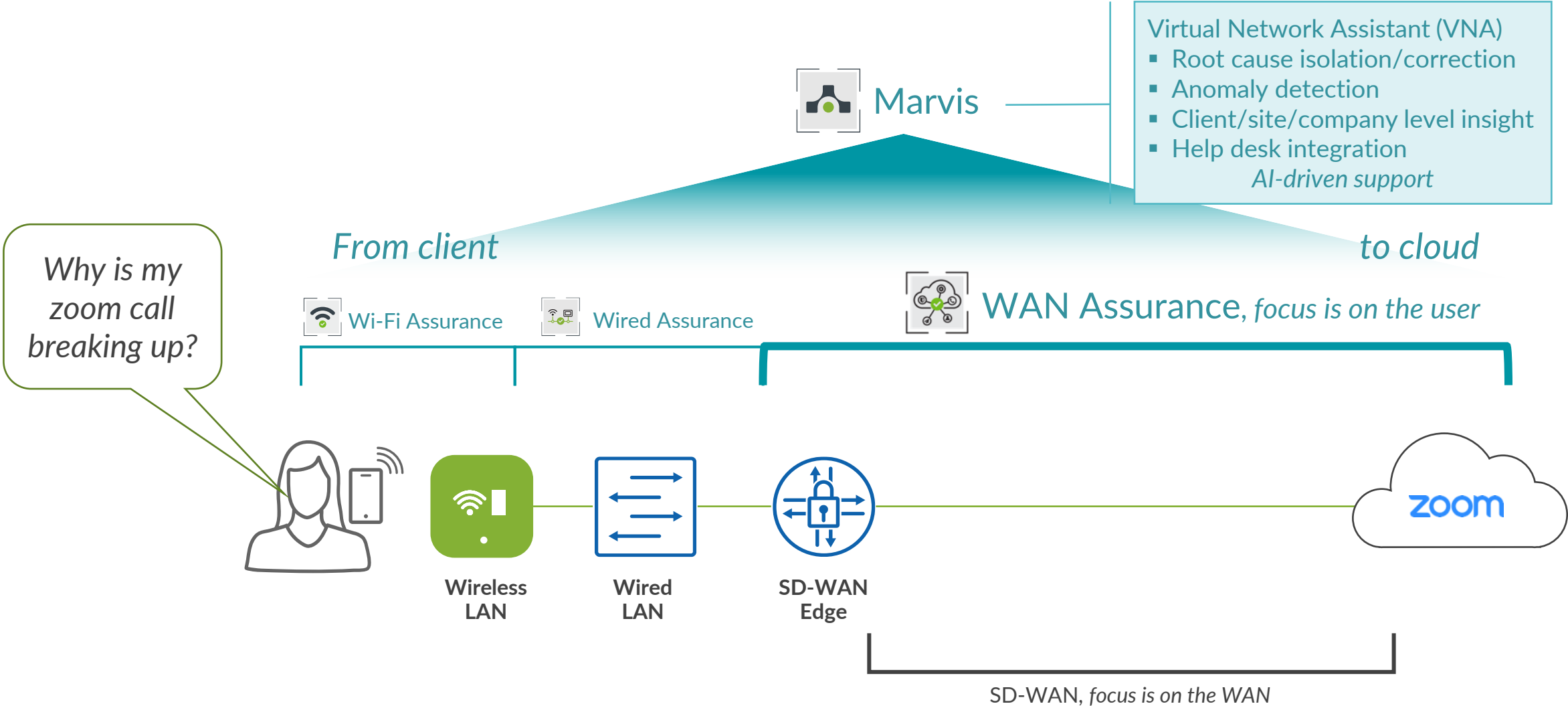
TODAY

User & app experience centric - AI assisted operations for WAN

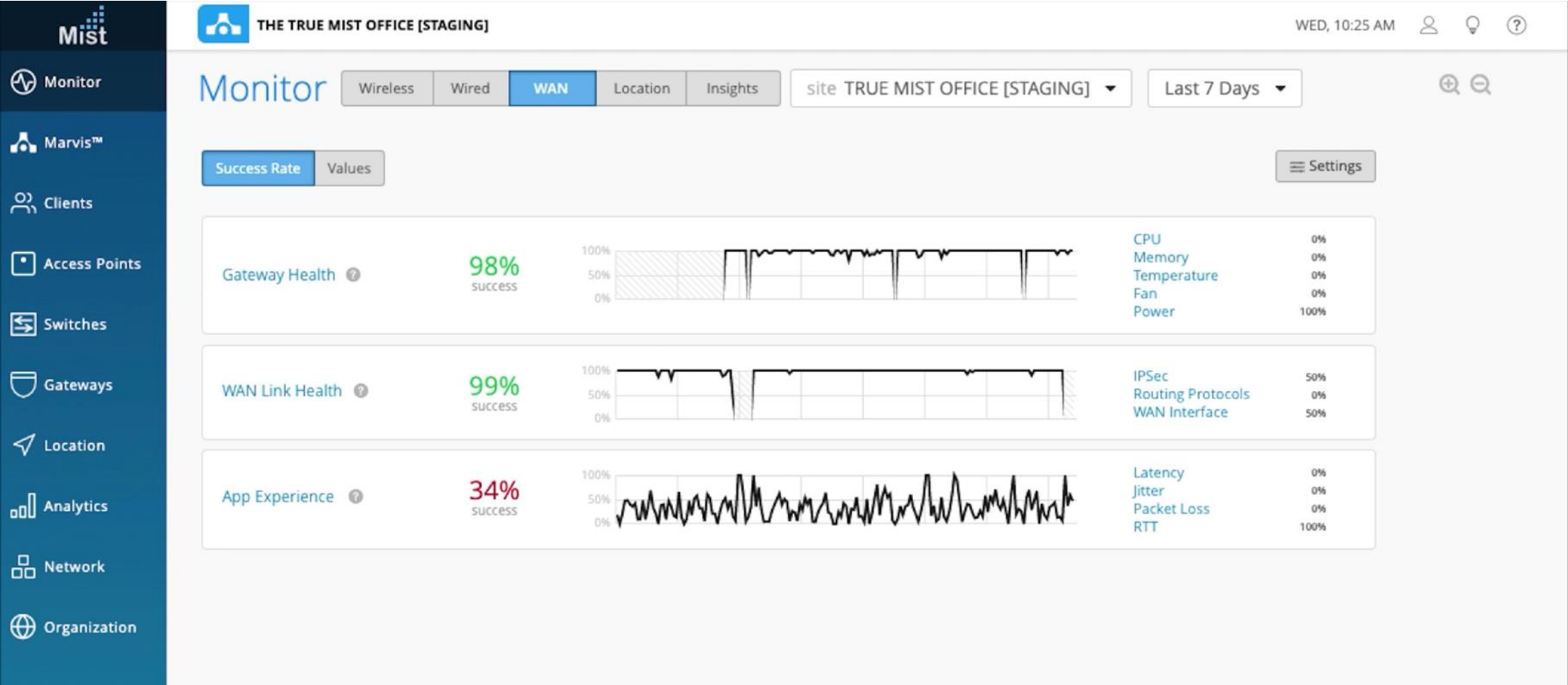


AI-Driven WAN

WAN Assurance – Bringing Insight Into User Experience



WAN Assurance – SLE Insights



Juniper Mist WAN Assurance, Driven by Mist AI



Marvis Virtual
Network Assistant

Marvis WAN Assistant

- Why is application experience suffering – WAN impact
- WAN intelligence when debugging a wired/wireless user performance
- What is wrong with WAN routers / circuits

Marvis Actions for WAN

- Recommend policy changes based on user & app experiences

AI-Driven Customer Support

- Determine device failures and automate support escalation and RMA



WAN
Assurance

User Service Levels across WAN with Proactive Anomaly Detection

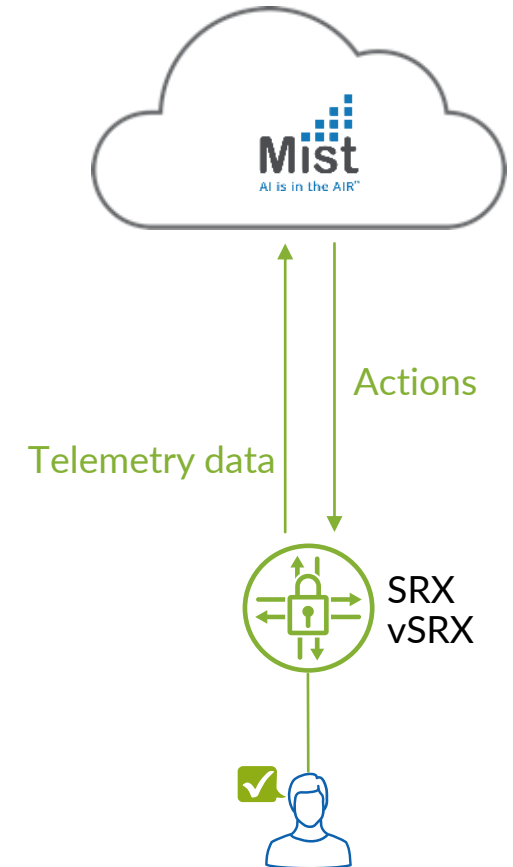
- Throughput
- Application
- Device Health

WAN Edge Events

- Configuration Changes, System Alerts, Interface State, Tunnel State, QoS/Failover Triggers

WAN Insights

- Bandwidth
- Application performance and trends

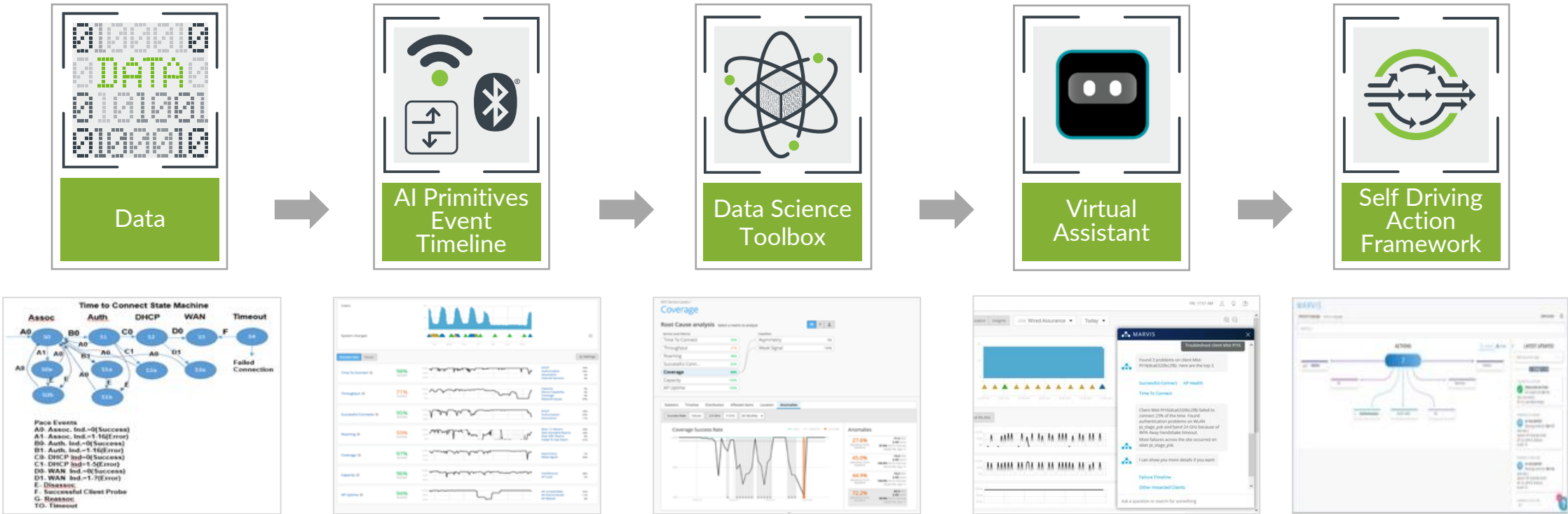


Marvis Virtual Network Assistant



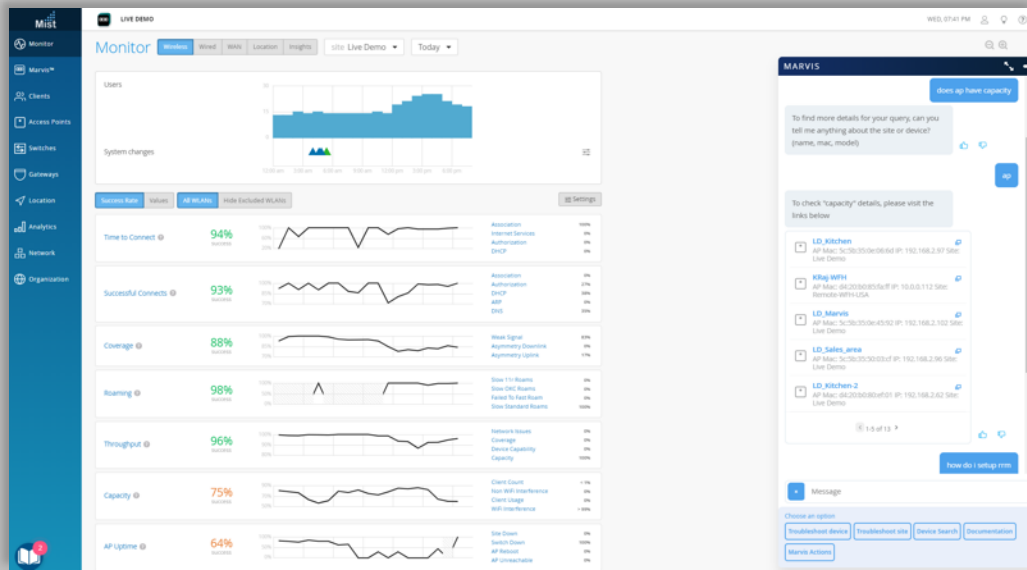
Marvis: The Journey to an AI-Driven Enterprise

Modern Cloud Stack and Security



Client\3rd party\WAN\Wired\Wireless

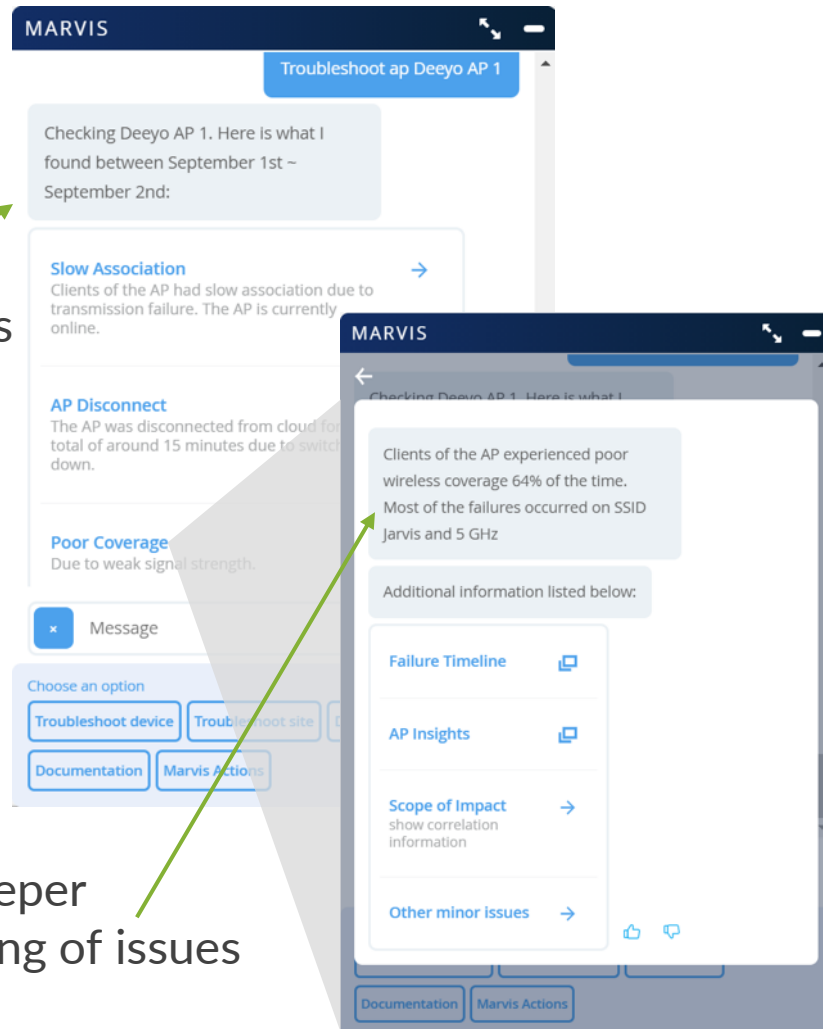
Marvis Virtual Network Assistant (VNA)



Marvis conversational interface applies NLP to transform how IT teams interact with the network, while streamlining operations and boosting user experiences

Marvis Actions delivers a self-driving network with automatic actions or a “driver-assist” mode to identify recommended actions with high efficacy

Marvis Conversational Interface



Understands
user intent
with NLP

Provides deeper
understanding of issues

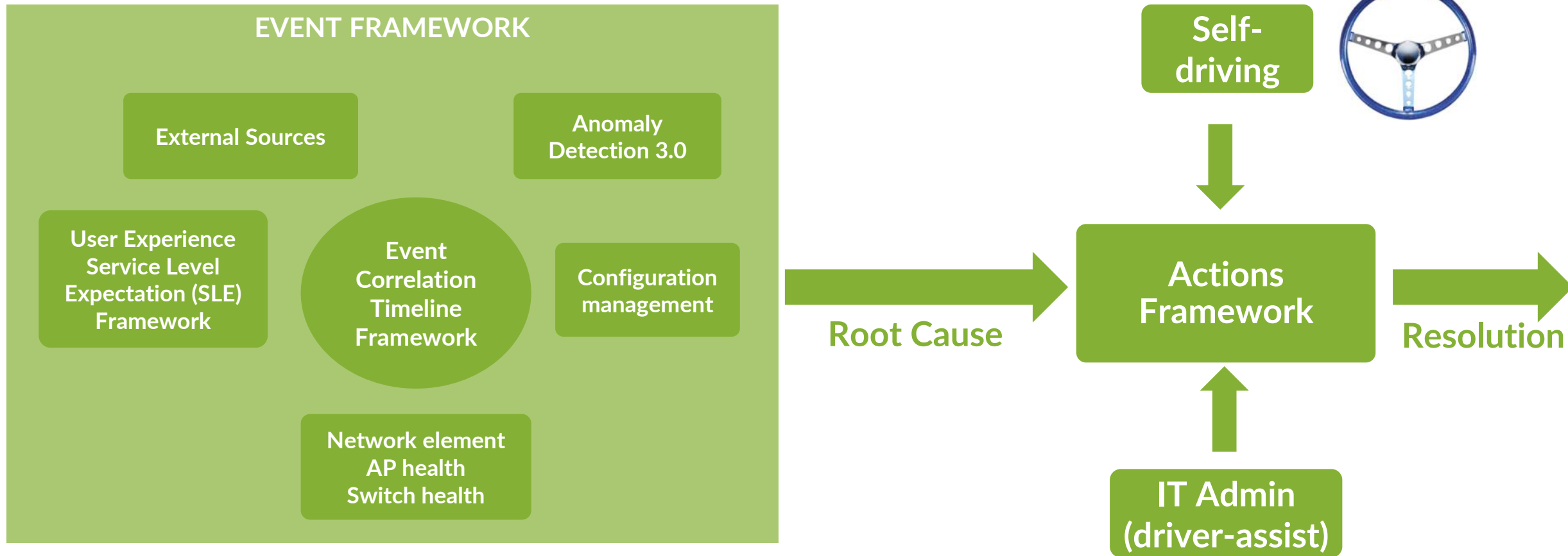
One stop shop for IT teams to...

- Get faster answers with chat vs. search
- Take actions as part of a conversation

Marvis offers...

- Improved language understanding (NLP)
- Suggested next steps when isolating issues
- The ability to learn and adapt based on user feedback

Entity Event and Actions Framework



Marvis Actions for a Self-Driving Network

Root cause analysis across WLAN, LAN, WAN and Security



A few things Marvis can do:

- Track/manage firmware upgrades
- Resolve EAP/802.1X authentication failures
- Proactive RMA
- Add missing VLANs
- Fix misconfigured ports
- Identify bad cables
- Find L2 loops
- Identify device compromise & risk to the network

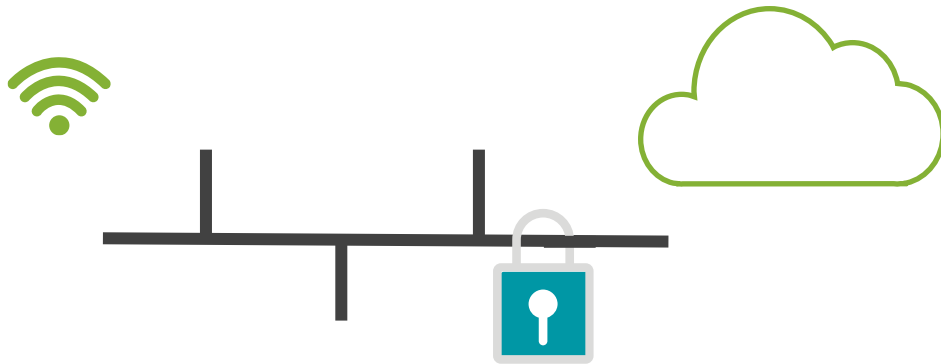
Reactive troubleshooting → Proactive prevention & remediation

Summary



Experience Is What Matters

From building **better networks...**



...to making **networking better.**

AI enables IT to deliver better user and client experiences with automated operations

Figure 1. Magic Quadrant for Enterprise Wired and Wireless LAN Infrastructure



Source: Gartner (November 2021)

2 Years a Leader
Positioned Furthest in Execution & Vision

Juniper Networks is a Leader in the 2021 Gartner® Magic Quadrant™ for Enterprise Wired and Wireless LAN Infrastructure

This is Juniper's 2nd consecutive year as a Leader in this market.

Juniper has the furthest position of any vendor in both Ability to Execute & Completeness of Vision.



Gartner Magic Quadrant for Enterprise Wired and Wireless LAN Infrastructure, Mike Toussaint, Christian Canales, Tim Zimmerman, 15 November 2021. GARTNER is a registered trademark and service mark of Gartner, Inc. and/or its affiliates in the US and internationally and is used with permission. All rights reserved. Gartner does not endorse any vendor, product or service depicted in its research publications, and does not advise technology users to select only those vendors with the highest ratings or other designation. Gartner research publications consist of the opinions of Gartner's research organization and should not be construed as statements of fact. Gartner disclaims all warranties, expressed or implied, with respect to this research, including any warranties of merchantability or fitness for a particular purpose. This graphic was published by Gartner, Inc. as part of a larger research document and should be evaluated in the context of the entire document. The Gartner document is available upon request from Juniper Networks.

Bring AI to Life

謝謝

Thank you