

The AI-driven Enterprise

# Optimize Network Experiences from Client to Cloud with Juniper® SD-WAN, driven by Mist AI™

## Juniper® SD-WAN, driven by Mist AI™

Juniper Networks' AI-driven SD-WAN solution enables you to delight customers with optimized, experience-first networking and resilient WAN connectivity. Juniper® Session Smart™ Routing and Mist AI™, it simplifies network operations, unlocks improved application performance, and allows you to safeguard business matters from client to cloud.

Juniper's SD-WAN solution is part of a full stack of AI-driven solutions for Wired, Wireless, and WAN that can be managed from a single, cloud-based portal for all Day 0, 1, and 2 operations.

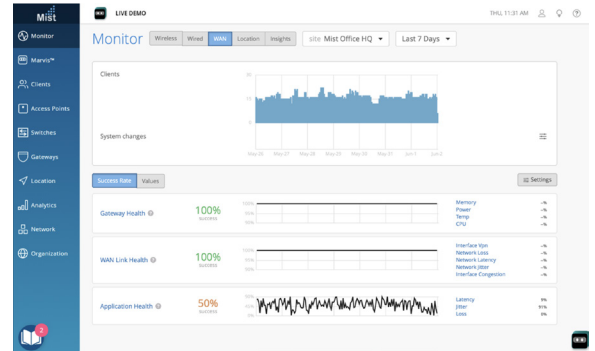


Figure 1: Juniper's AI-driven SD-WAN uses Mist AI to deliver Service Level Experiences

## Benefits & Features



### User Experience

- Delivers a deterministic, optimized end-user experience across the WAN.
- The tunnel-less technology frees up bandwidth, reclaiming 30 to 50 percent reduction in bandwidth costs compared to tunneling technology.
- Provides real-time insight into user-experience and automated troubleshooting for improved uptime and performance.



### Availability

- Juniper's AI-driven SD-WAN provides continuous connectivity without requiring expensive hot-standby tunnels.
- Enterprises can use server load-balancing capabilities to distribute workloads across data centers or availability zones to provide business continuity and disaster recovery for mission-critical services.



### Security

- Safeguard users and devices across the WAN with multi-hop authentication, adaptive encryption, and fine-grained segmentation while streamlining IT operations.
- Zero Trust session integrity, secure vector routing, and deny-by-default access policies ensure Juniper's AI-driven SD-WAN provide simple but effective security.



### Performance

- Juniper's AI-driven SD-WAN supports a variety of session optimization and intelligent routing features to ensure high performance and service quality for diverse applications and services.
- A highly responsive Session Smart fabric maintains end-to-end context for sessions, tenants, and dynamic workloads.
- Sub-second fail-over and Internet breakout for optimal IaaS and SaaS performance.



### Agility

- Tunnel-free architecture allows for rapid scaling to thousands of sites, while accelerating deployment of services to minutes instead of days and weeks.
- QR claim code for zero-touch provisioning and pre-configured templates allow for rapid Day 1 deployment.
- The microservices architecture of Juniper Mist Cloud allows for scaling services up or down elastically as they are needed, eliminating the cost and complexity of monolithic hardware.

## WAN Assurance

Juniper Juniper Mist™ WAN Assurance is a cloud service that brings AI-powered automation and service levels to the Juniper AI-driven SD-WAN solution. Driven by the power of Mist AI, WAN Assurance simplifies day two operations with insights, proactive anomaly detection and remediation, and automated troubleshooting.

- Session Smart Routers, deployed as SD-WAN edge devices, provide rich streaming telemetry needed for WAN health metrics and anomaly detection.
- Insights derived from telemetry data allows WAN Assurance to compute unique “user minutes” that indicate whether users are having a good experience.
- This data is leveraged within the Mist Cloud AI engine, driving simpler operations, reducing mean time to repair (MTTR), and providing better visibility into end-user experiences.
- The Marvis Virtual Network Assistant for WAN allows administrators to ask direct questions such as, “Why is my Zoom call pixelating?” or “Why can these users not connect to Teams?” Marvis provides complete insights, correlation, and actions.

Marvis actions may include corrections for issues such as application latency conditions, congested WAN circuits or negotiation mismatch, or problems with a host device.

## Juniper AI-driven SD-WAN as a Managed Service

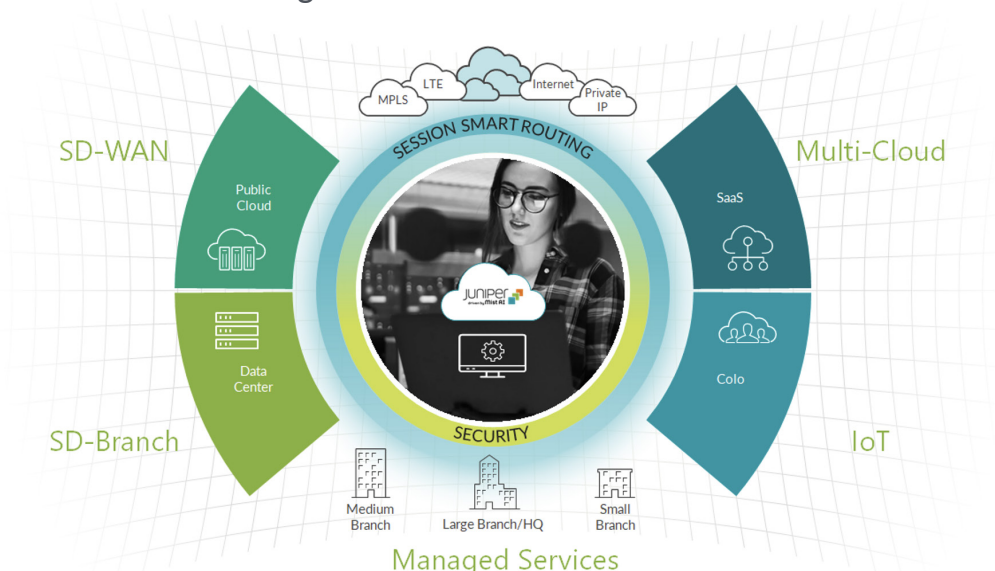


Figure 2: AI-driven SD-WAN Supports any Business Type

Using a managed services provider (MSP) is often the ideal way to consume an SD-WAN solution.

All of the solution benefits apply equally well when delivered as managed services. Working with an MSP can also bring you additional benefits including:

- Single point of contact on all issues
- Variety of support options available 24x7
- Security as a Service support
- Automated network management

Juniper Networks is deeply invested in the success of service provider channels and has Tier 1 references in many vertical industries. Our robust partner program ensures that any Juniper Partner you select has access to a full assortment of resources to enable your success.

### Corporate and Sales Headquarters

Juniper Networks, Inc.  
1133 Innovation Way  
Sunnyvale, CA 94089 USA  
Phone: 888.JUNIPER (888.586.4737)  
or +1.408.745.2000  
Fax: +1.408.745.2100  
www.juniper.net

### APAC and EMEA Headquarters

Juniper Networks International B.V.  
Boeing Avenue 240  
1119 PZ Schiphol-Rijk  
Amsterdam, The Netherlands  
Phone: +31.0.207.125.700  
Fax: +31.0.207.125.701

**JUNIPER**  
NETWORKS | Driven by  
Experience™