

Northeast Georgia Health System

On a mission to improve the health of a growing community

Make every connection count
in healthcare

[Explore the platform →](#)

Industry

Healthcare

Region

Americas

Overview

Deliver exceptional care to more patients with AI-native networking

Northeast Georgia Health System (NGHS) is expanding rapidly to meet the healthcare needs of a growing region. NGHS's commitment to quality healthcare is evidenced by its NIAHO accreditation, a federally approved standard, as well as an elite Level 10 Digital Health Most Wired recognition from CHIME.

NGHS has relied on Juniper networking for almost two decades, including for its enterprise WAN, hospitals, care centers, and data centers. The community healthcare system has expanded with Mist™, HPE Juniper Networking's AI-native networking platform, as it opens new hospitals and clinics.

Challenge

"We are growing everywhere, and we need a dynamic network that keeps up with growth," said Stuart Samples, CTO at NGHS.

NGHS opened an 11-story tower at its Gainesville, Ga. location in early 2025, with a renovated emergency department, expanded stroke center, and a helipad. In 2024, a new hospital brought emergency care, inpatient services, and robotic surgery to the Lumpkin area. NGHS is expanding its hospital in Braselton, with completion expected in late 2026.

Scaling IT services is critical to improving the health of the community. An innovative, flexible network platform is essential to support patient care, clinicians and staff services, and to empower the IT team to do more.

Transformation

NGHS relies on Mist for an AI-native and cloud-native network that delivers the right data, the right real-time response, and the right secure infrastructure at its hospitals, clinics, and medical office buildings. The result is transformational scale and agility to deliver critical healthcare services, simplified network operations, and exceptional user experiences.

"Juniper has been a trusted partner for many years, and the technology continues to get better and stronger," said Chris Paravate, CIO at NGHS. "Our strong relationship with Juniper has allowed us to innovate."





Outcomes

Seamless connectivity

55,000

Devices typically connected to the network

Simple expansion

2x

Doubled network footprint in 6 months

Smooth deployment

50%

Faster to install Juniper Wireless Access vs. previous controller-based solution

Solution and implementation

[Juniper Access Points](#)

[Juniper EX Switches](#)

[Marvis AI Assistant](#)

[Juniper Wi-Fi Assurance](#)

[Juniper Wired Assurance](#)

[Juniper QFX Switches](#)

[Juniper MX Routers](#)

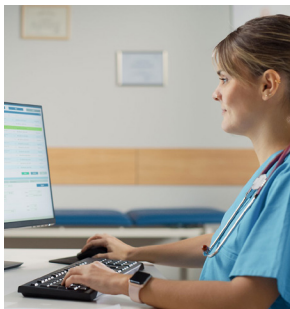
[Juniper Apstra Data Center Director](#)

[Juniper Indoor Location Services](#)

[Juniper Premium Analytics](#)

[Juniper User Engagement](#)

[Juniper Asset Visibility](#)



"Having **Mist** means we have fewer complaints about wireless."

Stuart Samples
CTO, NGHS

Scalable, secure connectivity with automated operations

The AI-native, cloud-native Mist platform brings together wireless access, wired access, and indoor location services under a common Marvis® AI engine and microservices cloud solution across all NGHS locations.

Marvis® AI Assistant, the industry's first virtual network assistant, simplifies operations and empowers the IT admins to find and fix problems, including video conferencing problems like dropped calls and bad audio, quicker and more reliably, lowering OpEx and assuring the user and device experience.

"Marvis AI Assistant makes troubleshooting simpler," said Kristien Kramer, Director of Network, Telecom, and Audio Visual at NGHS. "Having the right tools with accurate information makes a huge difference for our support team and engineers."

Juniper MX routers deliver the proven performance, simplified automation, and future-proof network architecture for the health system's private WAN.

In the data center, Juniper's automated, secure networking solutions, including Juniper Apstra Data Center Director and Juniper QFX switches, deliver a simplified operational experience, unlocking high reliability, workload mobility, and increased agility for critical applications and infrastructure.

Juniper Indoor Location Services, working in conjunction with virtual Bluetooth® Low Energy (vBLE) capabilities in Juniper access points, enable use cases for workplace safety, patient experience, and asset tracking.

Key takeaways and outcomes



"Historically, people blame the network. **With Mist, we can prove that the network is good.** Complaints about the Wi-Fi are few and far between."

Stuart Samples
CTO, NGHS

Proven AI for patient care and innovation

With the Mist platform, NGHS staff can access their clinical and administrative applications from anywhere. Infusion pumps, mobile medication carts, and robotic surgery systems are reliably connected. Clinicians can access their critical mobile apps reliably, with voice calls and messages automatically directed to them. More than 6,500 concurrent users and 55,000 devices are connected.

Keep pace with constant change

"Our Juniper network supports the base layer of everything we do," said Kramer. "We are a national leader in robotic surgery, and our surgical systems depend on Juniper's high availability, resiliency, and Marvis AI."

Spend more time on planned work and less time firefighting

"We've been able to scale our infrastructure without scaling our IT team at a linear pace," said Paravate. "With Juniper and Marvis AI, we can do more. Our engineers can focus on deploying new network services, rather than support."

Scalable, resilient private WAN

The network has continued to scale with NGHS's evolving needs. "As our footprint changes, we can choose from different Juniper platforms to meet our needs today and tomorrow," said Samples. "The visibility, control, and resilience of our Juniper network is critical to our business."

More information

The Mist platform: purpose-built with AI and for AI

To learn more about Mist, visit our website at

<https://www.juniper.net/us/en/campus-and-branch.html>

For technical datasheets, guides, and documentation, visit Juniper AI for

IT operations (AIOps): <https://www.juniper.net/us/en/solutions/artificial-intelligence-for-it-operations-aiops.html>

Take the next step

Connect with us

Learn how we can build what's next.

[Connect with us →](#)

Explore solutions

Discover Juniper's solution practice.

[Try Marvis AI risk free →](#)

Read case studies

See how we help unlock new growth.

[St Luke's ElderCare →](#)

[Rady Children's Hospital San Diego →](#)

More insights

Get the latest news delivered weekly.

[The Feed →](#)