

JUNOS SPACE NETWORK DIRECTOR

Product Overview

As businesses increasingly move to the cloud, there is a critical need for turnkey solutions that can help them bridge the gap between their existing environments and their vision of more agile and flexible networks that will reduce complexity and cost.

Junos Space Network Director is a next-generation network-wide management solution optimized for agility, automation, and simplicity for the cloud era. It allows users to visualize, analyze, and control the entire enterprise network—data center and campus—through a single pane of glass.

Product Description

Juniper Networks® Junos® Space Network Director provides a smart, comprehensive, and automated network management solution designed for the cloud era that enables network and cloud administrators to visualize, analyze, and control their entire enterprise network—data center and campus, physical and virtual infrastructure—through a single pane of glass. In the data center, Network Director, which offers a full turnkey solution, helps administrators manage, visualize, and troubleshoot physical and virtual environments by providing correlated visibility between virtualized and physical networks, as well as flow analysis, visualization, and synchronization of network policies as virtual machines (VMs) move from server to server. In the campus, Network Director automates routine management tasks such as network provisioning and troubleshooting, dramatically improving operational efficiency and reliability.

Network Director incorporates key functions that address the challenges posed by the rapid adoption of virtualized, dynamic, and on-demand cloud services across data center and cloud deployments. In addition, Network Director offers sophisticated end-to-end network visibility and flow path analysis in conjunction with the Juniper Networks Cloud Analytics Engine, providing flow-aware performance analysis to improve application performance and availability by associating flows/applications across the physical and virtual infrastructure, improving the ability to quickly roll out new applications and troubleshoot problems.

These smart network management capabilities are delivered through the following

Automate

- **Fabric automation** fully automates the provisioning, configuration, and deployment of complex underlay and virtualized fabric topologies, providing comprehensive pre- and post-deployment support and management for Layer 2 and Layer 3 fabrics, as well as Junos Fusion Enterprise and Junos Fusion Data Center fabrics. Junos Fusion is a single-tier architecture that allows an enterprise network to be managed as a single system.
- **Zero touch provisioning (ZTP)** simplifies the deployment of networks without requiring user intervention, providing policy-driven plug-and-play provisioning and network bring-up operations for both fabrics and individual devices.
- **Bulk provisioning** enables faster service rollout and activation while protecting against configuration errors with profile-based and pre-validated configurations. Bulk operations can be performed at logical (access, aggregation, core) or location (site, building, floor, rack) levels.
- **Automated access port provisioning** supports plug-and-play operations. Network Director detects the end point device types (such as wireless access points and VoIP phones) that are plugged into ports and automatically provisions all port-related parameters including VLAN, 802.1x, and security policies to comply with port profiles.

Analyze

- **Performance Analyzer** provides real-time and trended monitoring of tenants, hosts, VMs, fabrics, and ports, as well as high-frequency monitoring that gathers valuable performance data for tracking queue depth and heat-map visualization. Network Director analyzes the entire network, using heat-maps to identify over- and under-utilized ports, latency, and top VMs, users, devices, and ports.
- **Network Traffic Analyzer** proactively monitors network usage to find the sources of network traffic spikes. Incorporating an automated policy-driven sFlow collector and flow analysis, Network Traffic Analyzer quickly identifies and isolates users, applications and protocols consuming the most bandwidth.
- **Flow Path Analyzer** provides operational and diagnostic capabilities that trace connectivity between applications and flows by correlating network telemetry data with the application. Flow Path Analyzer visualizes network paths between leaf and spine switches for a given flow/application, correlating congested ports with high-latency events and identifying impacted or unhealthy VMs, applications, and hosts.
- **Overlay and Underlay Analyzer** provides full visibility, performance management, and troubleshooting capabilities for physical and virtualized overlay networks in VMware Virtual Extensible LAN (VXLAN) and controller-less environments. It provides a consolidated and correlated view of VMs, hosts, fabrics, and overlay and underlay networks with full end-to-end network and flow visibility and analysis.
- **VM Analyzer** provides real-time physical and virtual topology views, tracks vMotion activity including virtual machine creation, deletion, and moves, and maintains complete virtual network inventory.
- **Fabric Analyzer** monitors and analyzes the health of the entire network fabric, including IP Fabric, Virtual Chassis Fabric configurations, and Juniper Networks QFabric® System, increasing service availability.

Features and Benefits

End-to-End Network Visibility and Flow Path Analysis

Working in conjunction with the Cloud Analytics Engine, Network Director provides network data analysis to improve application performance and availability by associating flows with specific applications across the physical and virtual infrastructure, improving the ability to quickly roll out new applications and troubleshoot problems (see Figure 1).

Network Director analyzes and visualizes application flows running on VMs and bare-metal servers in the data center, reporting the specific path a flow takes through the network, the latency encountered at each hop, and traffic statistics for every network device in the path. Users can start flow analysis on selected active flows on a specific VM or a non-virtualized host on demand and view the results. When users place a critical VM or non-virtualized host on a watch list, Network Director will automatically initiate analysis on all flows running on that device.



Figure 1: Flow path analysis

Network Traffic Analyzer

The Network Director Network Traffic Analyzer gathers detailed information about network bandwidth usage patterns on each switch port, allowing network administrators to make informed policy and planning decisions about specific applications and ports. Using an automated, policy-driven sFlow collector and flow analysis, Network Traffic Analyzer identifies which users, applications and protocols are consuming the most bandwidth, helping network administrators identify the source of network spikes and bursts to proactively monitor, control and manage network usage (Figure 2).

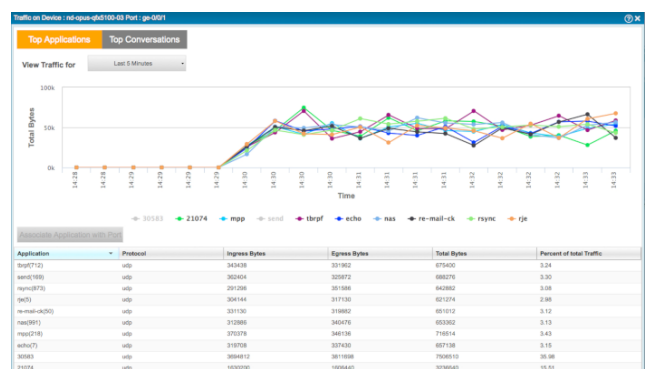


Figure 2: Network Traffic Analyzer

Integration with Virtualized and Cloud Infrastructure

Network Director integrates with virtualized and cloud infrastructure tools, providing network and cloud administrators with a comprehensive view of the complete data center infrastructure.

Network Director Management Pack for vRealize Operations provides comprehensive visibility into Juniper infrastructure and VMware virtual networking services deployed in a vSphere environment, including virtual machines (VMs), hosts, and network elements such as switches and switch fabrics. Virtual administrators and network operations managers will be able to determine at a glance the health, capacity and performance of these objects, helping them quickly remediate problems that impact virtual machine connectivity and performance (Figure 3).

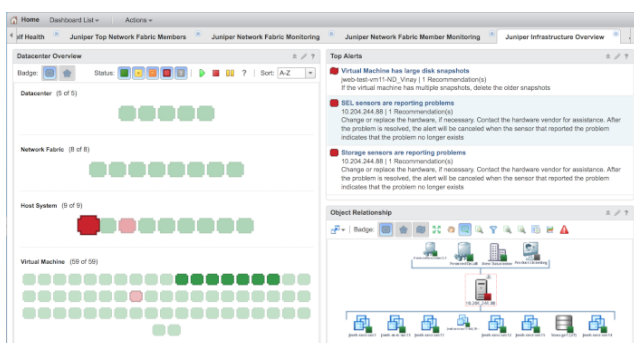


Figure 3: Juniper Management Pack main dashboard

Network Director also provides holistic and correlated visibility into enterprise and private cloud data centers comprised of physical (underlay) fabrics and virtualized networks (see Figure 4), as well as virtualized and non-virtualized hosts encompassing the following deployments:

- VMware vCenter**—Network Director unifies physical and virtual networks, providing a comprehensive view of the complete end-to-end virtual-to-physical network infrastructure. It integrates with VMware vCenter, delivering a combined solution that benefits from both vendors' innovation and from Juniper's orchestration solutions to discover, visualize connectivity between virtual and physical networks, orchestrate, and monitor VMware vSphere environments.
- VMware NSX and OpenStack**—Network Director integrates with cloud infrastructure controlled by VMware NSX SDN Controller environments and OpenStack. Through this integration, Network Director provides complete and correlated visibility between virtualized and physical networks as well as virtual machines, VXLAN, virtual tunnel endpoints, and OpenStack networks with full end-to-end network and flow visibility and analysis (Figure 4).

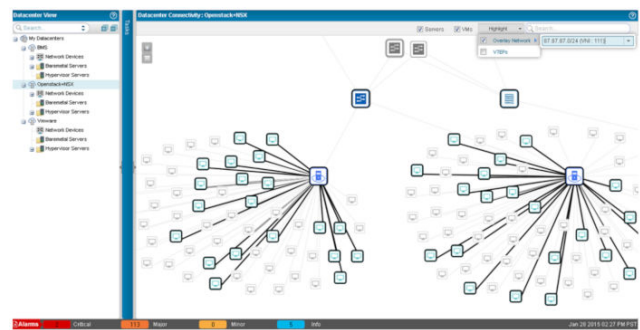


Figure 4: Virtualized (overlay) and underlay network visibility

In addition to virtualized and cloud infrastructure deployments mentioned above, Network Director also includes support for non-virtualized servers (also called bare-metal servers).

Fabric Automation and Management

Network Director provides comprehensive pre- and post-deployment (Day 0 through Day 2) plug-and-play fabric automation and management for Layer 2 and Layer 3 fabric topologies. It fully automates fabric-wide provisioning, configuration, and deployment of complex fabric topologies comprised of multistage spine-and-leaf switches, eliminating errors associated with manual deployment (see Figure 5). As part of the pre-deployment automation process for Layer 3 fabrics, Network Director provides simple-to-use workflows to set up fabric switches, assign protocol settings, perform BGP IP address configuration and cabling, and set up ZTP servers for plug-and-play operations.

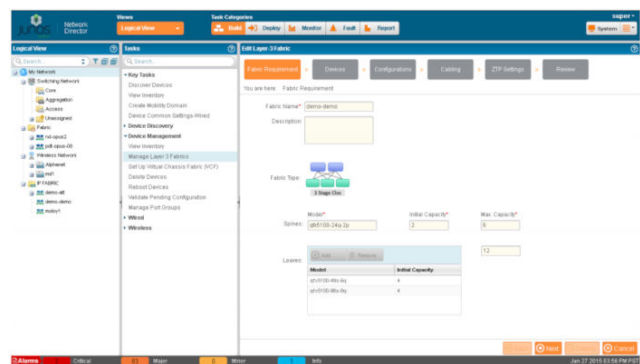


Figure 5: Fabric automation

Network Director also automates the discovery of fabrics and all of their associated switches. In addition, it performs cabling checks to ensure that all devices are connected per the initial design.

Controller-Less Network Virtualization

As networks grow more flexible and agile, enterprises are turning to network virtualization in the data center to increase cost effectiveness and gain a competitive edge. Network Director completely automates the creation and management of overlay fabrics on top of Layer 3 IP fabrics (underlay networks) utilizing an Ethernet VPN (EVPN) control plane and VXLAN-based overlay topology. The process follows a simple workflow that includes:

- Defining and mapping tenants to VRFs and VXLANs
- Defining tenant segments and mapping those segments to VLANs and VXLAN associations
- Multihoming server settings
- Associating gateways for tenants
- Providing full visibility into each tenant and overlay network, as well as correlated views of overlay and underlay networks

Multipoint Navigation and Views

Network Director improves operational efficiency by allowing users to manage the network from different views, groupings, and perspectives. It includes a customizable dashboard that provides a visual indication of overall network usage and network consumers, including VMs, hosts, top virtual networks, flow analysis, utilization, latency, top talkers, and alarms—all presented as part of a color-coded heat map representing devices and ports. Each device is color coded to convey the level of port utilization and latency; “cooler” colors indicate lower port utilization and latency while “hotter” colors indicate higher port utilization and latency (see Figure 6).

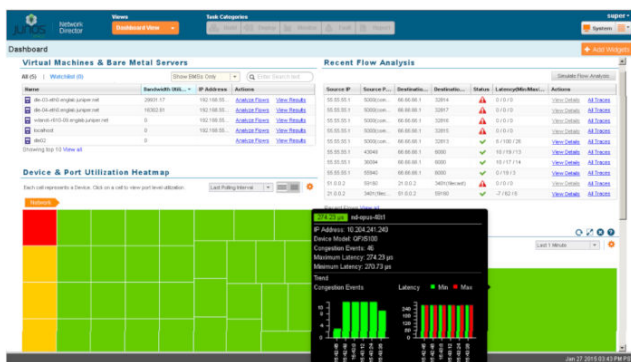


Figure 6: Dashboard view

In addition, Network Director Topology view shows all discovered devices in the network on a map where the devices are located across sites, buildings, floors, closets, and racks, along with their physical connections to other devices in the network. Topology view also shows the physical and logical connectivity between various discovered interconnected devices. Topology view allows users to zoom in or out of a site, see how a device is connected to its immediate neighbors, including VMware hosts connected to the

switch, or view alarm details, bandwidth of links, and real-time link data and state of the devices. Network Director also enables devices to be rearranged across buildings on the map.

Specifications

Network View and Device Selection

- View devices grouped by logical relationships, locations, device type, custom group view, data center view, or topology view
- Select logical, location, device-type, custom group, virtual, or topology view groupings to perform tasks on multiple devices simultaneously
- Search for devices in the network
- Define filters to selectively view specific logical, location, device-type, custom group, virtual, or topology groupings

Table 1. Supported Platforms

Supported Platforms	Operating System
QFX Series Ethernet Switches QFX5100 Virtual Chassis Fabric	Junos OS releases 13.2X51-D20, 14.1X53-D15, 14.1X53-D27, 14.1X53-D40
QFX10008	Junos OS releases 15.1X53-D30, 15.1X53-D33, 15.1X53-D60, 15.1X53-D61, 15.1X53-D64
QFX10002-36Q-DC QFX10002-72Q-DC	Junos OS releases 15.1X53-D61, 15.1X53-D64, 17.2R1
QFX5200-32C-AFI QFX5200-32C-AFO QFX5200-32C-DC-AFI QFX5200-32C-DC-AFO	Junos OS releases 15.1X53-D30, 15.1X53-D230
QFX5110-32Q QFX5110-48S	Junos OS releases 17.2R2.8, 17.3R1.10, 17.4R1.16, 18.1R3.3
QFX5100-48S-3AFI QFX5100-24Q-3AFI QFX5100-24Q-3AFO QFX5100-24Q-D-3AFI QFX5100-24Q-D-3AFO QFX5100-48T-AFI QFX5100-48T-AFO QFX5100-48T-DC-AFI QFX5100-48T-DC-AFO	Junos OS releases 14.1X53-D35, 14.1X53-D40, and 14.1X53-D42
QFX10002 as IP Fabric Spine device QFX5100 as IP Fabric Spine or Leaf device EX4300 as IP Fabric Leaf device	Junos OS releases 15.1X53-D60, 15.1X53-D61, 15.1X53-D64, and 17.2R1 for QFX10002 Junos OS releases 14.1X53-D35, 14.1X53-D40, and 14.1X53-D42 for QFX5100 Junos OS releases 14.1X53-D27, 14.1X53-D40, and 14.1X53-D42 for EX4300
QFX3500/QFX3600 with non ELS	Junos OS releases 12.3X50-D35 and 12.3X50-D40

Supported Platforms	Operating System
QFX3500/QFX3600 with ELS (Standalone and Virtual Chassis)	Junos OS releases 13.2X51-D30
QFX5100-24Q, QFX5100-48S, QFX5100-96S with ELS (Standalone and Virtual Chassis)	Junos OS releases 14.1X53-D15, 14.1X53-D27, 14.1X53-D40
QFabric Systems (QFX3000-G and QFX3000-M)	Junos OS releases 13.2X52-D20, 14.1X53-D15, 14.1X53-D17
EX Series Ethernet Switches: <ul style="list-style-type: none"> EX2200, EX2200-C EX3200 EX3300: Standalone and with Virtual Chassis technology EX4200: Standalone and with Virtual Chassis technology EX4500: Standalone and with Virtual Chassis technology EX4550: Standalone and with Virtual Chassis technology Mixed EX4200, EX4500, EX4550 Virtual Chassis configurations EX6200 EX8200: Standalone and with Virtual Chassis technology 	Junos OS releases 11.4, 12.1, 12.2, 12.3, 13.2X50-D10, 13.2X50-D15, 13.2X51-D15, 13.2X51-D20, 13.2X51-D30, 14.1X53-D15, 14.1X53-D25, 15.1R1, 14.1X53-D35, 14.1X53-D40, 14.1X53-D42
EX Series Ethernet Switches with ELS: EX2300 and EX3400	Junos OS Release 15.1X53-D50, 15.1X53-D51, 15.1X53-D52, 15.1X53-D55, 15.1X53-D56
EX2300-48T	15.1X53-D55, 15.1X53-D56
EX2300-48P	
EX Series Ethernet Switches with ELS: EX4300 Standalone and with Virtual Chassis technology	Junos OS releases 13.2X51-D15, 13.2X51-D20, 13.2X51-D30, 14.1X53-D27, 14.1X53-D35, 14.1X53-D40, 14.1X53-D42
EX4600 Standalone and with Virtual Chassis technology	Junos OS release 13.2X51-D25, 14.1X53-D27
EX9200	Junos OS releases 13.2R1, 13.2R2, 13.3R2, 14.1R4, 14.2R2, 15.1R1, 16.1R1, 17.1R1, 17.2R1
MX Series 3D Universal Edge Routers: MX240, MX480, MX960 (ELS)	Junos OS releases 13.2R2.4, 14.1R4, 14.2R2, 15.1R1
MX80, MX104, MX240, MX480, MX960 (non-ELS)	Junos OS release 14.1R4, 15.1R1
VMware vCenter Server	vCenter 5.0, 5.1, 5.5, 6.0, 6.2
VMware vRealize Operations	6.0, 6.1, 6.2, 6.3, 6.4, 6.5
VMware ESXi	VMware ESXi versions 5.0, 5.1, 5.5, 6.0, 6.2
OpenStack	Supported release—Kilo, Liberty, Mitaka, Newton
VMware NSX –V	Version 6.2 Version 6.1 Version 4.1

Data Center Management

- Fully automated plug-and-play underlay fabric topologies
- Controller-less: Build virtual networks on top of IP fabric underlays without SDN controller utilizing EVPN/VXLAN
- SDN integration: Discover virtual networks with VMware NSX SDN controller
- Automatically orchestrate physical switches based on vMotion
- View hosts, virtual switches, virtual machines, virtualized networks, and virtual tunnel end points (VTEPs)
- View tenants, virtualized networks, and all underlay fabric resources
- View connectivity between VMs, virtual switches, physical switches, and virtualized networks
- View vMotion history, VM and host bandwidth utilization
- Compatible with VMware vCenter versions 4.1, 5.0, 5.1, and 5.5
- Compatible with VMware vSphere versions 4.0, 4.1, 5.0, 5.1, and 5.5
- Compatible with VMware NSX 6.0, 6.1, and 6.2.0
- Compatible with OpenStack Kilo, Liberty, Mitaka, and Newton

VMware vRealize Operations Management Pack

- Management Pack provides:
 - Health dashboard for networking and compute to cloud administrators
 - Correlated view of virtual and physical network components to cloud administrators
 - Physical network capacity management and planning
- Main dashboard widgets—Data Center Overview, Top Alerts, and Object Relationship—display all data centers, underlying fabrics, host devices, and virtual machines that are part of the data center network
- Fabric and fabric members (spine/leaf) dashboards monitor Juniper Fabric topologies such as Virtual Chassis, QFabric Systems, Layer 3 fabrics, and Virtual Chassis Fabrics that are part of the data center. Dashboard widgets display data center fabrics, CPU and memory utilization history, and forecast widgets.
- Top Fabrics and Fabric Members dashboard enables cloud administrators to view and identify potential performance issues in the data center, identifying top fabrics by CPU and memory utilization, top noisiest fabrics based on Alerts widget, and top volatile fabrics based on Metrics widget. Clicking on a row provides more details about that fabric and possible causes, if any, for the vulnerability of the fabric.

Configuration Profiles

- Create, edit, or delete the following profiles:
 - Access profile (EX Series Ethernet Switches and MX Series 3D Universal Edge Routers [LAN])
 - Authentication profile (EX Series)
 - Class-of-service (CoS) profile (EX Series, QFX Series, QFabric System, and MX Series [LAN])
 - Device basic settings profile (EX Series, QFX Series, QFabric System, and MX Series [LAN])
 - Filter profile (EX Series, QFX Series, QFabric System, and MX Series [LAN])
 - Port profile (EX Series, QFX Series, MX Series [LAN] and QFabric System)
 - Quick templates to setup smaller deployments Auto profile provisioning based on policy
 - VLAN profile (EX Series, QFX Series, QFabric System, MX Series [LAN] and WLC Series)

Deploy Mode Features

- Configuration changes
 - View pending configuration changes and validate changes before deploying configuration on devices
 - Automatically deploy changes on selected devices immediately or at a scheduled time
 - Set SNMP configuration
 - Port channelization and conversion
 - Manual Approval mode requires device configuration changes to be explicitly approved
 - View deployment results and manage configuration deployment jobs
- Software images
 - Maintain a repository of software images for switches and wireless LAN controllers
 - Deploy selected images on selected devices immediately or at a scheduled time
 - View deployment results and manage image deployment jobs
- Resynchronize configuration
 - Resynchronize the saved device configuration with the configuration on the device
- Configuration file management
 - Back up and restore device configuration files
- Configuration and image baselining
 - Audit configuration changes and image files and send notification in the event of unauthorized changes

Monitor Mode Features

- Traffic monitoring (view the following for traffic on switches and wireless LAN controllers):
 - Fabric and fabric members (spine and leaf) utilization
 - Network Traffic Analyzer
 - Fabric Analyzer for Virtual Chassis Fabric and QFabric System
 - Top VMs by bandwidth utilization
 - Host network interface card (NIC) bandwidth utilization
 - Virtual switch summary by version
 - VM bandwidth utilization trend
 - Distribution of mobile devices
 - Current mix of unicast, multicast, and broadcast packets and trends over time
 - Port traffic trend and error trend
 - Current port utilization and trend
 - Equipment status
 - System information (view the following):
 - Device status and information
 - CPU and memory usage
 - Fan and power supply status
 - Port status

Fault Mode Features

- Alarm monitoring
 - Correlate low-level faults into easy-to-understand alarms
 - View current counts of critical, major, and minor alarms (always visible in user interface)
 - View alarms for selected scope by category, severity, and state
 - View individual alarm details
 - Search for an alarm

System Mode Features

- Audit trail and job management
 - View audit trail of Network Director user and system activity
 - View and manage all jobs

Juniper Networks Services and Support

Juniper Networks is the leader in performance-enabling services that are designed to accelerate, extend, and optimize your high-performance network. Our services allow you to maximize operational efficiency while reducing costs and minimizing risk, achieving a faster time to value for your network. Juniper Networks ensures operational excellence by optimizing the network to maintain required levels of performance, reliability, and availability. For more details, please visit www.juniper.net/us/en/products-services/.

Installation and Implementation Service

Juniper Professional Services offers a [Network Director QuickStart](#) program. This QuickStart provides an on-site consultant who works with the client team to plan the deployment of Junos Space and Network Director; identify any special setup requirements based on applications or resources; deploy the software, including system configuration; create discovery rules or directly import devices into the Junos Space platform inventory; and add new devices to Network Director. The final phase of the engagement consists of a review of the configuration information in Network Director and a knowledge transfer session of the Junos Space platform solution that includes a demonstration of basic discovery techniques and inventory tools. This phase also includes a demonstration of how to add and import device configurations into Network Director, as well as an explanation of basic element manipulation. The knowledge transfer session is intended as a review of the customer's localized implementation and configuration options. It is not a substitute for [formalized training](#).

Ordering Information

Network Director uses a very simple perpetual licensing model and is licensed by the number of devices that it manages, including EX Series Ethernet Switches and WLA Series Wireless LAN Access Points. Whether the device is a wireless LAN access point or an Ethernet switch, it is counted as a device. Wireless LAN controllers are not counted towards the device count. Select any quantities and any combination of the following SKUs for the number of devices you plan to manage.

Table 2. Junos Space Network Director Ordering Information

Model Number	Description
JS-NETDIR-10	Junos Space Network Director for 10 devices
JS-NETDIR-25	Junos Space Network Director for 25 devices
JS-NETDIR-100	Junos Space Network Director for 100 devices

Network Director is part of Junos Space and requires Junos Space Network Management Platform (JS-PLATFORM) to be installed.

About Juniper Networks

Juniper Networks brings simplicity to networking with products, solutions and services that connect the world. Through engineering innovation, we remove the constraints and complexities of networking in the cloud era to solve the toughest challenges our customers and partners face daily. At Juniper Networks, we believe that the network is a resource for sharing knowledge and human advancement that changes the world. We are committed to imagining groundbreaking ways to deliver automated, scalable and secure networks to move at the speed of business.

Corporate and Sales Headquarters

Juniper Networks, Inc.
1133 Innovation Way
Sunnyvale, CA 94089 USA

Phone: 888.JUNIPER (888.586.4737)

or +1.408.745.2000

www.juniper.net

APAC and EMEA Headquarters

Juniper Networks International B.V. Boeing
Avenue 240 1119 PZ Schiphol-Rijk
Amsterdam, The Netherlands

Phone: +31.0.207.125.700

