

# JUNIPER AND SOLARWINDS: MONITORING SOLUTIONS FOR ENTERPRISE NETWORKS

## EX Series Switches, Orion NPM and Cirrus Configuration Manager

### Challenge

High-performance enterprises demand networking solutions that are fast, secure and reliable. To ensure network performance, it is essential to understand how the network and applications are performing.

### Solution

Orion Network Performance Monitor (NPM) from SolarWinds gathers, aggregates and leverages performance and management data from multiple network components, including Juniper Networks EX Series switches, to monitor the health of individual connections and provide a big-picture view of network operations.

### Benefits

The EX Series switches have been thoroughly tested with Orion NPM as well as the Cirrus Configuration Manager, enabling existing SolarWinds customers to integrate the Juniper products into their overall management system and ensure operational efficiency while protecting existing investments.

Juniper Networks®, the industry leader in delivering high-performance networking solutions, and SolarWinds together deliver a consolidated view into the network infrastructure. The Juniper Networks EX Series Ethernet Switches work with SolarWinds Orion Network Performance Monitor (NPM) and Cirrus Configuration Manager, enabling existing SolarWinds customers to quickly and easily integrate network infrastructure management capabilities into their global management system for complete end-to-end, network-wide monitoring of service-level agreements and quality-of-service (QoS) settings.

### The Challenge

Today's enterprise networks are heterogeneous environments composed of best-in-class solutions from multiple vendors to meet an organization's ongoing business requirements.

Each of these network components comes with its own management tools to provide detailed insight into, and control over, network devices. Using these specialized management tools, IT staff can exercise a high level of control for configuring, monitoring and troubleshooting individual devices.

However, true network management requires a complete end-to-end understanding of how applications are flowing across the infrastructure. Detailed device-level management tools don't always provide the "big picture" view that network managers need to ensure efficient and trouble-free network operations. Sometimes a higher-level, more global view is required that complements the device-specific tools to understand how the various components are interacting and how the network is performing as a whole.

Such global views are provided by management solutions such as Orion NPM, which gathers, aggregates and leverages performance and management data from multiple network components to monitor the health of individual connections and provide a big-picture view of network operations. Not only does Orion NPM allow users to monitor the availability of their network devices, including Juniper Networks EX Series switches, it also helps network engineers optimize the performance of their networks by providing unprecedented visibility into network health. Cirrus Configuration Manager allows EX Series switch customers to easily back up configuration files and ensure network reliability by automatically detecting and alerting users about network configuration problems in real time.

As a member of the SolarWinds Synergy Partner Program, the EX Series switches have been tested with Orion NPM and Cirrus Configuration Manager, enabling existing SolarWinds customers to integrate the Juniper products into their overall management system, ensuring operational efficiency while protecting existing investments.

## Orion Network Performance Monitor

Orion Network Performance Monitor enables you to quickly detect, diagnose and resolve network performance problems and outages. It offers out-of-the-box network-centric views that are designed to deliver the critical information network engineers need. And Orion NPM is the easiest product of its kind to use and maintain, meaning you will spend more time actually managing networks, not supporting Orion NPM. Discover why a worldwide community of network engineers relies on Orion NPM and its expandable modules to monitor real-time statistics and the performance of their networks.

Cirrus Configuration Manager is an affordable, easy-to-use network configuration and change management solution that delivers a unique combination of scalability and robust functionality to automate device configuration management across multivendor network infrastructures.

## Juniper Networks EX Series Switches

The EX Series Ethernet Switches from Juniper Networks enable businesses to deploy a high-performance network infrastructure based on three key tenets: operational simplicity, carrier-class reliability, and integration and consolidation. Working together,

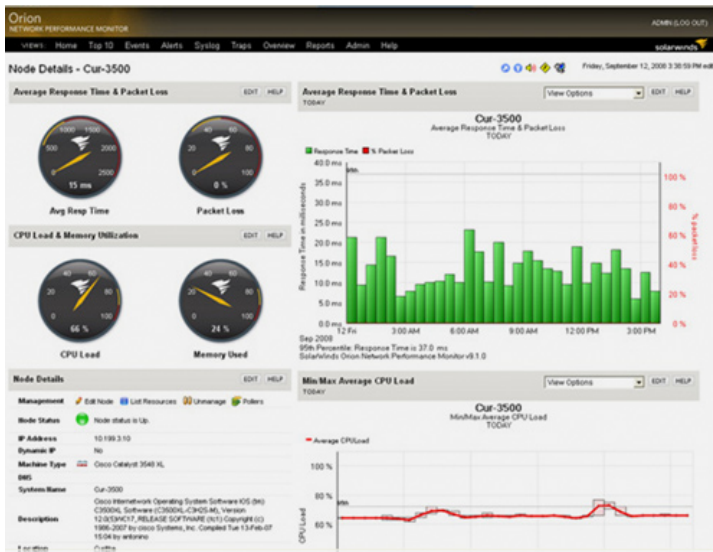
these attributes enable the EX Series switches to deliver ubiquitous access to strategic business assets, reduce network downtime, and enhance overall security to shared access across the extended enterprise.

The EX Series switches are powered by the same Juniper Networks JUNOS® Software that runs the high-performance Juniper routers deployed in the world’s largest networks, bringing carrier-class systems availability to the enterprise for the first time. Not only does JUNOS empower EX Series switches with field-proven and time-tested technology, it also provides an open platform for innovation through a modular code base and single release train that enables management partners such as SolarWinds to quickly and efficiently establish interoperability with Juniper solutions.

As a result, the EX Series switches enable SolarWinds Orion NPM and Cirrus customers to rapidly deploy and manage a compatible switching infrastructure with ease, reducing operational costs while protecting existing investments in their management platform.

## Features and Benefits

	JUNIPER NETWORKS EX SERIES SWITCHES	SOLARWINDS ORION NETWORK PERFORMANCE MANAGER
<b>Lower Operational Costs</b>	<ul style="list-style-type: none"> <li>JUNOS Software, a single-source operating system, provides a consistent experience across platforms.</li> <li>The JUNOS Software single release train enables rapid feature deployment, fast software upgrades and flexible network modifications.</li> </ul>	<ul style="list-style-type: none"> <li>Deploying Orion NPM is simple. First, install and configure Orion NPM. Next, automatically discover your network. Finally, begin monitoring your network for fault and performance issues. No consultants are required.</li> <li>Orion NPM’s intuitive point-and-click interface allows network engineers to easily diagnose fault and performance issues without requiring expensive consultants.</li> <li>Cirrus allows users to make bulk network configuration changes, saving network engineers hours of time.</li> </ul>
<b>Carrier-Class Reliability and Availability</b>	<ul style="list-style-type: none"> <li>JUNOS provides continuous systems availability to ensure the highest levels of network availability.</li> <li>EX Series switches offer modular, hot-swappable hardware components, ensuring maximum uptime.</li> <li>Virtual Chassis technology offers the high availability (HA) of chassis-class platforms in a pay-as-you-grow form factor.</li> </ul>	<ul style="list-style-type: none"> <li>Detailed graphs, tables and lists are displayed in a fully customizable Web-based interface that allows users to remotely view network fault, availability and performance information.</li> <li>Quickly configure alerting for correlated events, sustained conditions and escalations without waking up at 3 a.m. to unnecessary notifications.</li> <li>Using additional modules, Orion can analyze network traffic using NetFlow Traffic Analyzer, provide voice over IP (VoIP) analysis using VoIP Monitor, and monitor wireless networks using Wireless Network Monitor.</li> </ul>
<b>Scalability</b>	<ul style="list-style-type: none"> <li>EX Series Ethernet switches support high-density deployments while enabling consolidation of network layers.</li> <li>Modular EX8200 line of Ethernet switches offer a high-density solution with up to 64 (eight-slot chassis) or 128 (16-slot chassis) wire-speed 10 GbE ports.</li> </ul>	<ul style="list-style-type: none"> <li>Monitor as few as several hundred network elements to well over one million elements without impacting WAN performance.</li> <li>Schedule and automatically back up network configurations on routers, switches, firewalls, access points and other network devices.</li> </ul>



## Juniper Networks EX Series Switches and the Orion NPM Solution

Orion NPM provides comprehensive performance, fault management and network availability tools to ensure that your network is always running at peak performance. Via a cutting-edge Web interface, Orion NPM gives you a unified view into the performance of thousands of nodes and interfaces on your network, including Juniper Networks EX Series switches. From a single Web page, you can monitor performance management metrics from any SNMP-enabled device, including routers, switches, firewalls and servers. Commonly monitored metrics include bandwidth utilization, packet loss, latency, errors, discards and QoS. With Orion NPM, you get the information you need to quickly fix issues before your users ever have a chance to call the help desk.

## Summary: SolarWinds and Juniper Join Forces to Reduce Operational Costs

The EX Series switches enable SolarWinds Orion NPM and Cirrus customers to rapidly deploy and manage a compatible switching infrastructure with ease, reducing operational costs while protecting existing investments in their management platform.

### Next Steps

For more information, please contact SolarWinds at [www.SolarWinds.com](http://www.SolarWinds.com).

For more information about the Juniper Networks EX Series switches, visit [www.juniper.net/us/en/products-services/switching/](http://www.juniper.net/us/en/products-services/switching/).

### About SolarWinds

SolarWinds provides downloadable, enterprise-class network management software that is affordable, easy to use, and guided by a large and growing user community. Focused on the real-world needs of network professionals, SolarWinds products are simple to try, simple to use, and simple to maintain, while providing the power, scale and flexibility needed by companies of all sizes. More than 50,000 customers from small businesses to the largest enterprises rely on SolarWinds products to take the complexity out of managing their networks. Learn more today at [www.solarwinds.com](http://www.solarwinds.com).

### About Juniper Networks

Juniper Networks, Inc. is the leader in high-performance networking. Juniper offers a high-performance network infrastructure that creates a responsive and trusted environment for accelerating the deployment of services and applications over a single network. This fuels high-performance businesses. Additional information can be found at [www.juniper.net](http://www.juniper.net).

#### Corporate and Sales Headquarters

Juniper Networks, Inc.  
1194 North Mathilda Avenue  
Sunnyvale, CA 94089 USA  
Phone: 888.JUNIPER (888.586.4737)  
or 408.745.2000  
Fax: 408.745.2100

#### APAC Headquarters

Juniper Networks (Hong Kong)  
26/F, Cityplaza One  
1111 King's Road  
Taikoo Shing, Hong Kong  
Phone: 852.2332.3636  
Fax: 852.2574.7803

#### EMEA Headquarters

Juniper Networks Ireland  
Airside Business Park  
Swords, County Dublin, Ireland  
Phone: 35.31.8903.600  
Fax: 35.31.8903.601

Copyright 2009 Juniper Networks, Inc. All rights reserved. Juniper Networks, the Juniper Networks logo, JUNOS, NetScreen, and ScreenOS are registered trademarks of Juniper Networks, Inc. in the United States and other countries. JUNOS is a trademark of Juniper Networks, Inc. All other trademarks, service marks, registered marks, or registered service marks are the property of their respective owners. Juniper Networks assumes no responsibility for any inaccuracies in this document. Juniper Networks reserves the right to change, modify, transfer, or otherwise revise this publication without notice.

To purchase Juniper Networks solutions, please contact your Juniper Networks representative at 1-866-298-6428 or authorized reseller.