



WXC SERIES APPLICATION ACCELERATION PLATFORMS

Product Overview

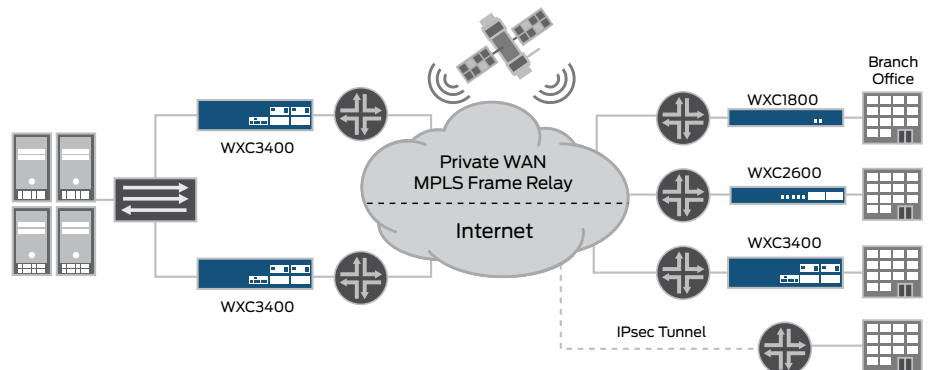
Juniper Networks WXC Series Application Acceleration Platforms provide distributed enterprises with a scalable approach to accelerating the delivery of client-server and Web-based business applications and services – including ERP, CRM, email and file services as well as voice, video and terminal services such as Citrix – over the WAN. Based on the comprehensive WX Series Framework, which delivers the elements needed to accelerate applications over wide-area links and optimize WAN performance, the WXC Series helps businesses make the most efficient use of their existing WAN resources and improve application response times by providing a more LAN-like experience for branch office users accessing centralized applications.

Product Description

Juniper Networks® WXC Series Application Acceleration Platforms, members of a larger family of WAN optimization solutions from Juniper Networks, provide distributed enterprises with a cost-effective solution for accelerating mission-critical business applications, as well as voice, video and terminal services, over wide-area networks, maximizing WAN investments and improving application response times for branch office users.

The WXC Series improves application performance over the WAN by recognizing and eliminating redundant transmissions, accelerating TCP and application-specific protocols, prioritizing and allocating access to bandwidth, and ensuring high application availability at sites with multiple WAN links. On-board hard drives that provide the foundation for the Network Sequence Caching feature enables the WXC Series to store particularly large data patterns over long periods of time, allowing the devices to identify and remove repetitive traffic separated by gigabytes of data or last seen days or even weeks earlier, producing up to a 100-fold increase in effective WAN capacity.

The TCP-, application- and protocol-specific acceleration features help overcome the impacts of latency, dramatically improving response times for remote and branch-office users accessing centralized applications over the WAN. Quality of service (QoS) and bandwidth management tools allow IT to prioritize application traffic, ensuring mission-critical transactions always have sufficient bandwidth while preventing less important applications from consuming an inordinate amount of valuable WAN resources.



The WXC Series supports both inline and off-path configurations, as well as multipath environments, asymmetric deployments and secure IPsec configurations over public networks.

Integrated WebView device management software provides unprecedented visibility into WAN performance, enabling managers to identify top talkers, monitor application throughput, performance and packet distribution across the WAN, review acceleration statistics, and create executive summary reports that provide a high-level overview of important performance characteristics.

The WXC Series communicates constantly to provide distributed stateful intelligence about the entire network, exchanging vital information such as topology, reachability, and path-performance metrics to ensure maximum efficiency.

WXC1800: The WXC1800 Application Acceleration Platform features an 80 GB internal hard drive, offers two copper 10/100 Ethernet ports, and supports total reduction throughput speeds ranging from 512 Kbps to 2 Mbps. Designed for small- to medium-sized branch office, the WXC1800 supports up to 10 connections to other branch office, headquarter or data center WXC Series devices.

WXC2600: The WXC2600 Application Acceleration Platform includes a field-serviceable 250 GB hard drive, two copper 10/100/1000 Ethernet ports, and support for total reduction throughput speeds ranging from 2 Mbps to 10 Mbps. Designed for a medium to large branch office and small data center, the WXC2600 supports up to 50 connections* to other branch office or data center WXC Series devices.

WXC3400: The WXC3400 Application Acceleration Platform features redundant, field-serviceable 500 GB hard drives (for a total of 1 TB of storage), two copper 10/100/1000 Ethernet ports, and support for total reduction throughput speeds ranging from 10 Mbps to 45 Mbps. Designed for head office and data center applications, the WXC3400 supports up to 140 connections to other branch office or data center WXC Series devices.

Features and Benefits

Compression and Caching

The patented Molecular Sequence Reduction (MSR) compression and Network Sequence Caching technologies enables the WXC Series to deliver up to a 100-fold increase in effective WAN capacity, providing immediate congestion relief for all IP-based traffic, including TCP- and UDP-based applications, while allowing businesses to avoid costly WAN upgrades.

The MSR algorithm recognizes repeated data patterns and replaces them with labels, dramatically reducing WAN transmissions and improving overall application performance. Operating in memory, the MSR dictionary can store hundreds of megabytes of patterns for a broad cross-section of application types, from short chatty ones to those with longer patterns. By eliminating redundant traffic, the MSR compression technology delivers a 10-fold increase in effective WAN capacity.

Sequence Caching is similar to MSR in that it identifies and replaces redundant data patterns with labels before forwarding across the WAN. However, Sequence Caching utilizes hard drives only available on the WXC Series platforms to store larger data patterns over longer periods of time, enabling the devices to detect and eliminate repetitive traffic separated by gigabytes of data or last seen days or weeks earlier. As a result, the Sequence Caching feature enables the WXC Series to produce up to a 100-fold increase in WAN capacity.

TCP Acceleration

The WXC Series platform's Packet Flow Acceleration (PFA) technology liberates data traffic from the limitations imposed by TCP, increasing throughput across the WAN and accelerating applications on low-bandwidth or high-latency connections between the WXC Series. Forward Error Correction (FEC), a component of PFA, limits the need for retransmissions on "lossy" networks such as satellite links by making use of recovery packets to reconstruct lost transmissions.

SSL Optimization

WXC Series platform's SSL acceleration capabilities provide SSL encrypted applications like Web-based (HTTPS), mail (imap/pop3s/smtp), and directory services (LDAPS) with the same performance benefits as unencrypted applications. Once the applications' certificates and private keys are installed on the WXC Series, they learn on-the-fly the key used by the client/server. This allows the WXC Series to read the flow decrypted and apply all its different optimizations like compression and caching or application acceleration. To enhance security, the traffic moving between the WXC Series platforms can be encrypted using an IPsec tunnel to ensure privacy is retained.

Application- and Protocol-Specific Acceleration

The Application Flow Acceleration (AppFlow) technology improves the performance of specific applications and protocols – including Microsoft Exchange, Windows file services and Web-based applications – over the WAN.

AppFlow for Microsoft Exchange, Windows, and Linux file services improves application performance by accelerating their underlying protocols – MAPI and CIFS, respectively. These protocols send data in small blocks that must be received and acknowledged before the next block can be sent, requiring hundreds or even thousands of round trips to complete a single transaction. The AppFlow for Microsoft Exchange and AppFlow for CIFS technology, pipelines these data blocks in quick succession, delivering up to a 50-fold improvement in application performance, meeting the needs of remote and branch office users accessing centralized applications or Network Attached Storage (NAS) data over the WAN.

* Requires software upgrade

AppFlow for HTTP accelerates Web-based applications over the WAN by enabling the WXC Series to learn and cache objects associated with URLs. Similar to MAPI and CIFS, HTTP submits a series of sequential requests for Web objects, requiring tens or hundreds of round-trips between the client and server to build a Web page. With AppFlow for HTTP, the WXC Series platform transparently caches objects locally, resulting in much faster page loads.

Application Control

The WXC Series platform's QoS capabilities allow IT to assign priority and set bandwidth levels to ensure that business-critical and latency-sensitive applications such as VoIP always have sufficient bandwidth. The easy-to-use Juniper Networks QoS implementation preserves QoS markings applied by other devices as needed and transparently map traffic onto carrier classes of service.

In addition, a congestion control feature that tightly couples the WXC Series platform's QoS engine with the MSR compression technology allows QoS policies to dynamically detect changes in bandwidth availability and adjust allocation and prioritization schemes accordingly.

The WXC Series also offers a Policy-based Multipath feature which enables IT to assign applications to a specific path in locations served by multiple WAN links. The WXC Series monitors loss and latency characteristics on each link and automatically diverts applications to the alternate path if performance falls below acceptable levels.

WebView and WX CMS Software

Visibility into and control over the WXC Series Application Acceleration Platforms is provided via embedded WebView device management and the powerful WX Central Management System (WX CMS) software. The WX CMS software provides visibility into application performance across multiple WXC Series devices, enabling extensive configuration, monitoring and management capabilities. Individual device monitoring and configuration can be performed via WebView device management or a command-line interface (CLI).

Content Distribution

Content distribution and WAN optimization are now integrated on the WXC Series. To further reduce the delay associated with first-time downloads, WXC Series implements content distribution that automatically pushes all new content to WXC Series devices, proactively "warming" the cache and pre-populating the hard drive with data patterns to optimize every download. This content distribution can be managed in a single location with the WX CMS software, where the distribution can be pushed to multiple locations, scheduled in advance, executed once or repetitively to ensure that all branch offices maintain the highest performance.

Easy Installation and Configuration

WXC Series platforms can be installed and configured in just 10 minutes using a Web-based installation wizard. Configuration can also be fully automated using the WX CMS software. IT simply defines centralized configuration templates; when remote WXC Series devices boot up, they retrieve a network address, locate the WX CMS software server through the domain name service (DNS), download their configuration file and/or specified software, and begin operation.

The WXC Series also supports redundant configurations to ensure complete fail-safe operations. In the event of a failure, the WXC Series automatically converts to bypass mode, allowing traffic to pass through untouched.

Transparent to other network equipment, WXC Series can be installed directly inline between a LAN switch and WAN router, or they can be deployed offline by attaching to an available port on the switch or router. The WXC Series also works effectively alongside VPN servers, firewalls, and other security devices, where they optimize traffic before it is encrypted.

WXC Series Application Acceleration Platform Functions

Product Features	
Traffic services	IP payload compression, protocol acceleration, QoS, traffic visibility, application identification, route optimization, IPsec encryption, packet aggregation
Protocols supported	Any IP-based traffic (TCP, UDP, GRE, etc.)
Network Integration	
Installation	Inline between aggregation switch and edge router, or off WAN router using route injection (RIPv2), WCCPv2, or policy-based routing
Auto-deployment	No-touch auto-configuration available out of the box through WX CMS software
Transparency	Transparent bridge mode operation, configurable DSCP and IP port transparency
Topology support	Point-to-point, hub-and-spoke, full mesh
Network discovery	Via RIP v1/v2, OSPF, and router polling
Tunnel creation	Automatic or manual
Asymmetric routing support	Supported for both inline and off-path
Load balancing	Active/active or active/passive, with passive in hot standby
Fault-tolerant non-stop operation	10/100/1000BASE-T auto switch-to-wire on any power, hardware, or software failure condition
High availability	Backup device can support multiple primary devices: automatically fail-to-wire
Quality of Service	
Honor, preserve and/or set ToS/DSCP	Retain settings or prioritize using ToS/DiffServ values by application
Bandwidth allocation	Create traffic classes for bandwidth allocation with time of day option
Application identification	Automatic, based on source/destination IP address/port, ToS/DSCP, IP protocol, L7 identification for HTTP and Citrix; follows port hopping applications (FTP, Exchange)
Route optimization	Multipath: application level path selection based on link SLA
Traffic Acceleration	
Packet flow acceleration	TCP acceleration, fast connection setup, and forward error correction
Application flow acceleration	Microsoft CIFS, Linux file services, Microsoft Exchange, HTTP and SSL
Device Management	
SNMP, Syslog	SNMPv2c, MIB II, WX Enterprise MIB and local Syslog
Secure remote access	SSHv1, SSHv2, and HTTPS (SSL)
Reports	26 device-level reports available through WebView; 38 network-wide reports available with WX CMS
Authentication, Authorization and Accounting (AAA)	AAA local database, RADIUS support
Network upgradeable	Via FTP, HTTP and TFTP; dual software images and configurations
Monitoring	
Compression statistics	Per device, per application, and per destination; both real-time and historical
WAN performance statistics	Network latency, loss, and availability for SLA monitoring and enforcement
QoS, bandwidth management	Per destination, per traffic class, real-time and historical
Acceleration	TCP session time and throughput; both real-time and historical
Data export	CSV format and NetFlow version 5 records
Application reporting	Detail by IP addresses, and/or port numbers, and/or IP protocol, and/or DSCP/ToS value, with greater detail by URL element or application type
Event/performance monitoring	Generate automatic alerts (SNMP traps, email, console) for up to 200 administrator definable performance or system events



WXC1800



WXC2600

Specifications

	WXC1800	WXC2600
Performance		
Total reduction throughput speed	512 Kbps to 2 Mbps	2 Mbps to 10 Mbps
IPsec throughput	2 Mbps	10 Mbps
Tunnels supported	Up to 10 with all features enabled	Up to 50 with all features enabled*
Disk capacity	80 GB	250 GB
Connections		
Network interfaces	Two copper 10/100 Ethernet ports	Two copper 10/100/1000 Ethernet ports
Power		
Power requirement	100-240 VAC, 50-60 Hz, 40 Watts avg or 136 BTU/hr	100-240 VAC, 50-60 Hz, 75 Watts avg or 256 BTU/hr
Dimensions and Weight		
(W x H x D)	14.5 x 1.8 x 9.3 in (36.8 x 4.6 x 23.6 cm) 1 rack unit	17.5 x 1.8 x 14.5 in (44.5 x 4.6 x 36.8 cm) 1 rack unit
Weight	6 lb (2.7 kg)	17 lb (7.7 kg)
Operating Environment		
Temperature	41° to 104° F (5° to 40° C)	41° to 104° F (5° to 40° C)
Humidity	10% to 85%, noncondensing at 95° F (35° C)	10% to 85%, noncondensing at 95° F (35° C)
Maximum altitude	10,000 ft (3,048 m)	10,000 ft (3,048 m)
Nonoperating Environment		
Temperature	-40° to 158° F (-40° to 70° C)	-40° to 158° F (-40° to 70° C)
Humidity	5% to 95%, noncondensing at 95° F (35° C)	5% to 95%, noncondensing at 95° F (35° C)
Maximum altitude	40,000 ft (12,192 m)	40,000 ft (12,192 m)
Regulations		
Emissions	FCC Class A, EN 55022 Class A, EN 55024 Immunity, EN 61000-3-2, VCCI Class A	FCC Class A, EN 55022 Class A, EN 55024 Immunity, EN 61000-3-2, VCCI Class A
Safety	CAN/CSA-C22.2 No. 60950-1-03 - UL 60950-1 and EN 60950-1	CAN/CSA-C22.2 No. 60950-1-03 - UL 60950-1 and EN 60950-1
Acoustic noise	Maximum noise level is less than 45 dB	Maximum noise level is less than 55 dB

* Requires software upgrade to WXOS 5.7



WXC3400

WXC3400

Performance

Total reduction throughput speed	10 Mbps to 45 Mbps
IPsec throughput	44 Mbps
Tunnels supported	Up to 140 with all features enabled
Disk capacity	1 TB (redundant, field-serviceable 500 GB drives)

Connections

Network interfaces	Two copper 10/100/1000 Ethernet ports
--------------------	---------------------------------------

Power

Power requirement	Dual 100-240 VAC, 50-60 Hz, 140 Watts avg or 478 BTU/hr
-------------------	---

Dimensions and Weight

(W x H x D)	17.5 x 3.4 x 18 in (44.5 x 8.6 x 45.7 cm) 2 rack units
Weight	30 lb (13.6 kg)

Operating Environment

Temperature	41° to 104° F (5° to 40° C)
Humidity	10% to 85%, noncondensing at 95° F (35° C)
Maximum altitude	10,000 ft (3,048 m)

Nonoperating Environment

Temperature	-40° to 158° F (-40° to 70° C)
Humidity	5% to 95%, noncondensing at 95° F (35° C)
Maximum altitude	40,000 ft (12,192 m)

Regulations

Emissions	FCC Class A, EN 55022 Class A, EN 55024 Immunity, EN 61000-3-2, VCCI Class A
Safety	CAN/CSA-C22.2, No. 60950-1-03 - UL 60950-1 and EN 60950-1
Acoustic noise	Maximum noise level is less than 55 dB

Juniper Networks Services and Support

Juniper Networks is the leader in performance-enabling services that are designed to accelerate, extend, and optimize your high-performance network. Our services allow you to maximize operational efficiency while reducing costs and minimizing risk, achieving a faster time to value for your network. Juniper Networks ensures operational excellence by optimizing the network to maintain required levels of performance, reliability, and availability. For more details, please visit www.juniper.net/us/en/products-services.

Ordering Information

The table below reflects base models only. Bandwidth upgrades and options such as redundant hard drives, power supplies and fans (WXC3400 and WXC590 only) are also available. Please contact your Juniper Networks representative or reseller for details.

Model Number	Description
WXC-1800-A	WXC1800, incl. RTU SW license to 512 Kbps
WXC-2600-A	WXC2600, incl. RTU SW license to 2 Mbps
WXC-3400-A	WXC3400, dual hard drives, redundant AC power, incl. RTU SW license to 10 Mbps
WXC-3400-A-DC	WXC3400, dual hard drives, redundant DC power, incl. RTU SW license to 10 Mbps

About Juniper Networks

Juniper Networks is in the business of network innovation. From devices to data centers, from consumers to cloud providers, Juniper Networks delivers the software, silicon and systems that transform the experience and economics of networking. The company serves customers and partners worldwide. Additional information can be found at www.juniper.net.

Corporate and Sales Headquarters

Juniper Networks, Inc.
1194 North Mathilda Avenue
Sunnyvale, CA 94089 USA
Phone: 888.JUNIPER (888.586.4737)
or 408.745.2000
Fax: 408.745.2100
www.juniper.net

APAC Headquarters

Juniper Networks (Hong Kong)
26/F, Cityplaza One
1111 King's Road
Taikoo Shing, Hong Kong
Phone: 852.2332.3636
Fax: 852.2574.7803

EMEA Headquarters

Juniper Networks Ireland
Airside Business Park
Swords, County Dublin, Ireland
Phone: 35.31.8903.600
EMEA Sales: 00800.4586.4737
Fax: 35.31.8903.601

To purchase Juniper Networks solutions, please contact your Juniper Networks representative at 1-866-298-6428 or authorized reseller.

Copyright 2012 Juniper Networks, Inc. All rights reserved. Juniper Networks, the Juniper Networks logo, Junos, NetScreen, and ScreenOS are registered trademarks of Juniper Networks, Inc. in the United States and other countries. All other trademarks, service marks, registered marks, or registered service marks are the property of their respective owners. Juniper Networks assumes no responsibility for any inaccuracies in this document. Juniper Networks reserves the right to change, modify, transfer, or otherwise revise this publication without notice.