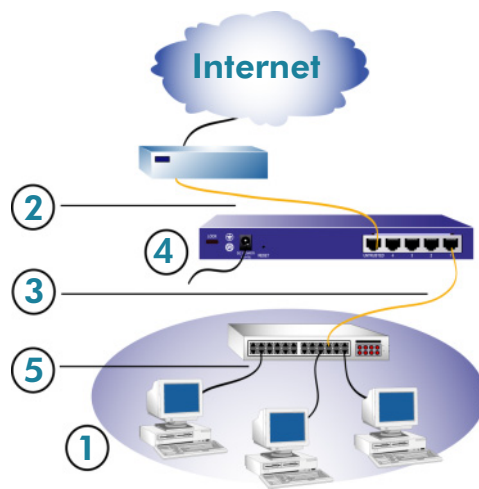


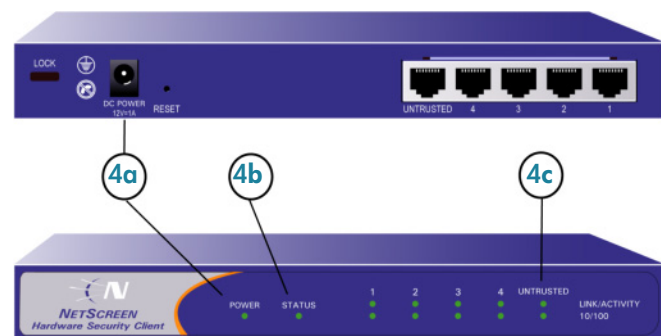
NetScreen Rapid Deployment

Getting Started

This guide helps you connect and configure your NetScreen FW/VPN device using Rapid Deployment (RD). RD automatically configures your device for management by NetScreen-Security Manager 2004, the integrated management system for all NetScreen FW/VPN devices.



Device shown is an NS-HSC; for network diagrams of your device, see the Getting Started Guide that shipped with your device.



CONNECTING THE DEVICE

Using the instructions below, connect the NetScreen FW/VPN device and prepare to configure the device to protect your network. Use the LEDs on the front panel of the device to help you determine device status.

Step 1

On a local computer, save the configlet. If you do not have a configlet, contact your Security Manager administrator. For details on other configuration methods and local management features, see the *User's Guide* included with your NetScreen FW/VPN device.

Step 2

Connect an Ethernet cable from the Untrust port of the device to the external router, cable modem, or DSL modem.

Step 3

- If the computer is in a LAN (see diagram), connect an Ethernet cable from a Trust port to the internal switch or hub.
- If the computer is a single workstation, connect an Ethernet cable from the Trust port to the Ethernet port on the workstation.



Step 4

Connect the power cable between the NetScreen FW/VPN device and a power source. NetScreen recommends using a surge protector.

- Ensure the Power LED glows green. This indicates the device is receiving power.
- After the device starts (about 30 seconds), ensure the Status LED blinks green. This indicates the device is operating normally.
- Ensure the Link LEDs glow for the connected interfaces. This indicates the device has network connectivity.

Step 5

Configure the computer to access the NetScreen FW/VPN device via a Web browser:

- Ensure that your computer is properly connected to your LAN.
- Configure your computer to automatically receive an IP address from the NetScreen FW/VPN device. For help, see your computer's operating system documentation.

Note: Ensure that your internal network does not already use a DHCP server.

- If necessary, restart your computer. Some operating systems must restart before new settings take effect.



CONFIGURING THE DEVICE

Using the instructions below, follow the **Rapid Deployment (RD) Wizard** to configure the device for Security Manager. The Wizard helps you install the configlet and enables the Security Manager administrator to begin managing the device remotely.

For details on other configuration methods and local management features, see the *User's Guide* included with your NetScreen FW/VPN device.

Step 1

Launch a Web browser. In the Web browser's URL address field, enter `http://192.168.1.1`. The RD Wizard appears.

The screenshot shows the 'Rapid Deployment Wizard' web interface. It has a blue header with the title 'Rapid Deployment Wizard'. Below the header, it says 'Welcome to the Rapid Deployment Wizard.' and 'Do you have a Rapid Deployment Configlet?'. There are two radio button options: 'No Configlet. Use the Initial Configuration Wizard to setup the device.' (which is selected) and 'Install Configlet to contact NetScreen-Security Manager system.'. Under the second option, there are two sub-options: 'Change the Port Mode: Trust-Untrust (Working Mode) Apply' and 'Load Configlet from: Browse...'. At the bottom, there is a red note: 'Note: To change the Port Mode, select the new mode and click Apply to save your changes. You must change the port mode BEFORE loading the Configlet.' and two buttons: 'Next >>' and 'Cancel'.

Step 2

Select **Load Configlet** and browse to the location of the saved configlet (.cfg) file. Click **Next** to continue.

The RD Wizard opens the configlet, verifies the integrity of the configlet, and decrypts the configlet information. Using this information, the Wizard prepares the device for management.

During this preparation process, the Wizard prompts you for any required information. Some or all of the required information might have already been entered by the Security Manager administrator.

Because the Wizard prompts you only for missing information, you might not need to complete all of the following steps.



Step 3

If prompted, enter the configlet password provided by your Security Manager administrator.

Step 4

If prompted for PPPoE information, enter the username and password for your PPPoE account.

Step 5

If prompted for static IP information, enter:

- The IP address and netmask of the interface connected to the external router, cable modem, or DSL modem.
- The gateway address (the IP address of the router port connected to the device)

Step 6

If the Security Manager administrator did not specify any ISP information, you must select the ISP environment in which you deployed your device:

- If your device uses DHCP to obtain an IP address, select **Using cable modem** (Dynamic IP via DHCP).
- If your device uses a PPPoE connection to the Internet, select **Using DSL modem** (Dynamic IP via PPPoE). This option enables your device to act as a PPPoE client that receives an IP address for the Untrust interface from an ISP. Enter the following:
 - The username for your PPPoE account.
 - The password for your PPPoE account.
- If your device uses a static IP address, select **Using ISP-supplied settings** (Static IP). This option enables your device to use a unique and fixed IP address for the Untrust interface. Enter the following:
 - The IP address and netmask of the interface connected to the external router, cable modem, or DSL modem.
 - The gateway address (the IP address of the router port connected to the device).

Step 7

Using the information you entered, the device contacts the management system and establishes a secure connection. When the device has connected, a confirmation screen appears indicating that you have successfully installed the configlet on the device.

Click **Finish** to exit the Wizard and close the Web browser.



MANAGING THE DEVICE

After the device connects to Security Manager, the Security Manager administrator can complete the device configuration, create policies to protect your network, and manage the device remotely.

For details on using Security Manager to configure policies, VPNs, attack protection, or other features, see the *NetScreen-Security Manager 2004 Administrator's Guide*.

You can also manage the device locally using the WebUI or the Command Line Interface:

- Using the WebUI, you can manage basic device features and view device configuration. For details, see the *NetScreen Concepts & Examples ScreenOS Reference Guide*.
- Using Command Line Interface (CLI), you can manage all features of your device from the ScreenOS command line. For details, see the *NetScreen CLI Reference Guide*



TROUBLESHOOTING

During the configlet installation process, errors can occur if the device is not properly connected to the network, or if the device is not running a factory default configuration.

The following sections provide details on resolving configlet installation issues.

Untrust Interface Failure Warning



This warning appears when the DHCP service or the PPOE service cannot assign an IP address to the device Untrust interface. The device cannot connect to Security Manager without an untrust IP address. To resolve the issue, check the following:

- Ensure that the untrust interface of the NetScreen FW/VPN device is connected to the external network.
- If you are using DHCP to assign an address to the untrust interface, ensure that the DHCP server is functioning properly.
- If you are using PPPoE to assign an address to the untrust interface, ensure that PPPoE is supported on your network.

Factory Default Warning



This error appears when the NetScreen FW/VPN device is not running a factory default configuration. Rapid Deployment is designed to configure non-deployed devices and enable them to connect to NetScreen-Security Manager. If your device already contains a device configuration, you must reset the device before you can use a Rapid Deployment configlet.

For details on resetting the NetScreen FW/VPN device, see the *User's Guide* included with your NetScreen FW/VPN device.

Copyright © 2003 NetScreen Technologies Inc. All rights reserved. NetScreen, NetScreen Technologies, GigaScreen, NetScreen-Security Manager, NetScreen-Remote, NetScreen ScreenOS and the NetScreen logo are trademarks and registered trademarks of NetScreen Technologies, Inc. in the United States and other countries. All other trademarks and registered trademarks are the property of their respective companies.