

Chapter 4

Performing Common Configuration Tasks

This chapter describes how to perform some common configuration tasks using the NMC-RX application.

This chapter contains the following sections:

- Overview on page 45
- Before You Begin on page 45
- Task 1. Create Groups on page 46
- Task 2. Add a Device on page 49
- Task 3. Start the Device Workshop on page 51
- Task 4. Create a Customer Profile on page 52
- Task 5. Configure an Object on page 55

Overview

To familiarize yourself with the NMC-RX application, complete these common configuration tasks in order:

1. Create one group and two subgroups.
2. Add an E-series device to a subgroup.
3. Start the Device Workshop.
4. Create a customer profile.
5. Configure an object.

Before You Begin

Ensure that the NMC-RX application is running. For information about installing and running the software, see *Chapter 2, Installing and Running the NMC-RX Application*.

Task 1. Create Groups

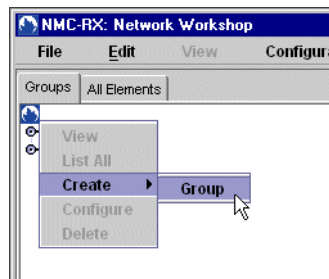
Within the NMC-RX application, *groups* represent a flexible hierarchy for organizing network elements. In this section, you will create a top-level group and name it *New England*. Then you will create two subgroups and name them *Massachusetts* and *New Hampshire*.

Create a Top-Level Group

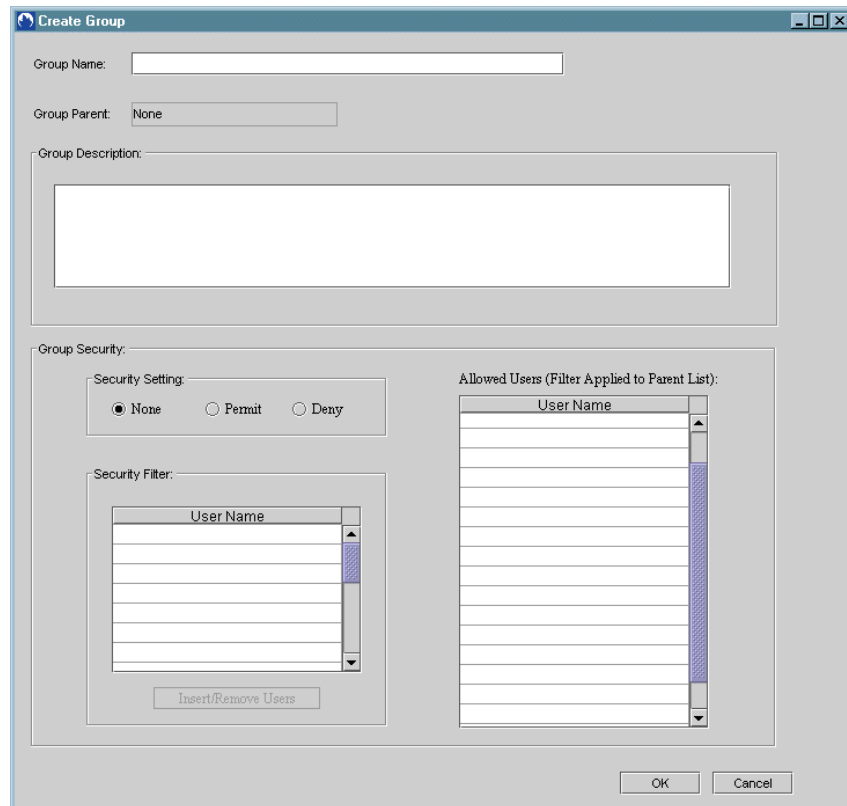
Begin this procedure from the Network Workshop.

To create a top-level group:

1. Click the NMC-RX icon, right-click, select Create, and click Group.



The Create Group dialog box appears.



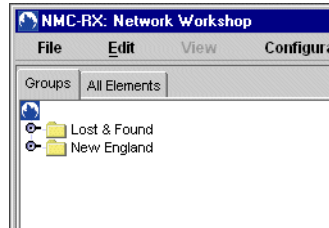
2. Enter the following information in the Create Group dialog box:

- Group Name: **New England**
- Group Description: **New England is the top-level group**

To include additional information about the group, use the Group Description text box. The information appears whenever the group is accessed. You can change or delete the text at any time.

3. Click OK.

The group name and folder icon appear in the context area in the Network Workshop.



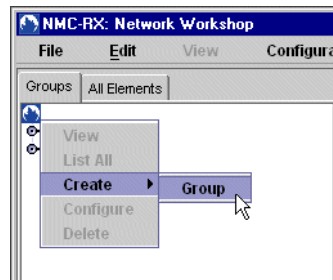
You have created a top-level group called *New England*. The next section describes how to create two subgroups.

Create Subgroups

Begin this procedure from the Network Workshop.

To create a subgroup:

1. Select the New England folder that you just created.
2. Right-click, select Create, and click Group.



The Create Group dialog box appears.

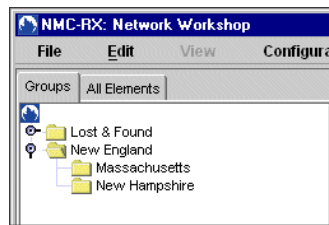
3. Enter the following in the Create Group dialog box:
 - Group Name: **Massachusetts**
 - Group Description: **Massachusetts is a subgroup**

4. Click OK.

The new group name and icon appear in the list in the context area.

5. Repeat Steps 1–4 to create a *New Hampshire* group.

Each group name and icon appears in the context area in the Network Workshop.



Task 2. Add a Device

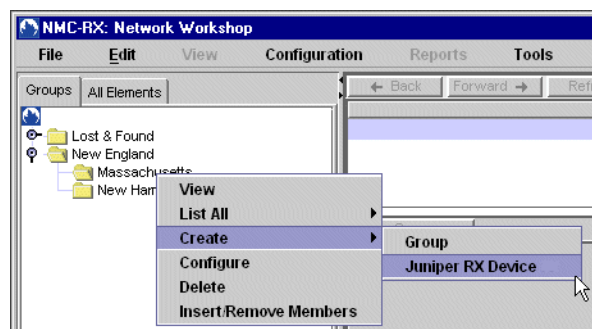
Within the NMC-RX application, *devices* represent E-series devices. You view devices as part of your network's hierarchy. In this section, you will add a device to the Massachusetts group and set basic identification parameters.



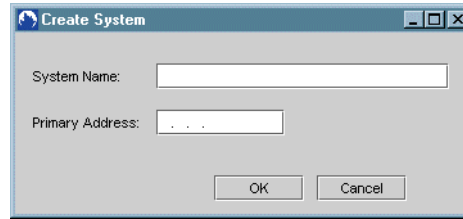
NOTE: Before you begin, you will need a valid IP address for a device on your network.

To add a device:

1. Select the Massachusetts group.
2. Right-click, select Create, and click Juniper RX Device.



The Create System dialog box appears.



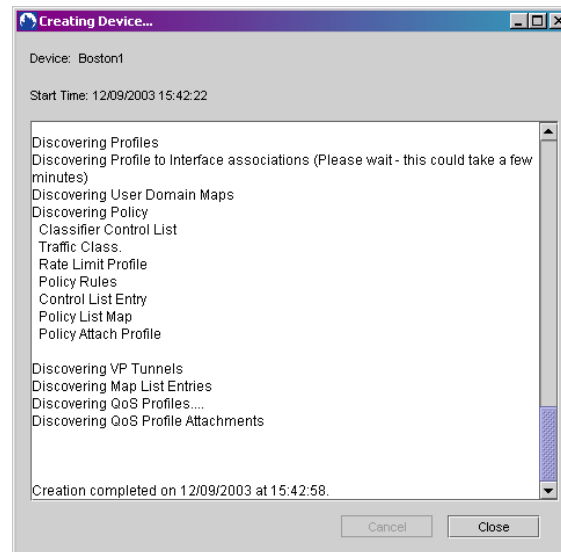
3. Enter the following information:

- System Name: **Boston1**
- Primary Address: **<IP_address>**

(Enter the IP address of a device on your network.)

4. Click OK.

The Creating Device window appears, and automapping of the device begins.



Depending on the device configuration, this process may take a few moments. After automapping the device, the NMC-RX application adds it to the Massachusetts group in the Network Workshop.



NOTE: Once the NMC-RX application starts automapping the device, if you close the Creating Device window or cancel the procedure, a confirmation dialog box appears.

5. Close the Creating Device dialog box.

The NMC-RX application acknowledges the creation of the Juniper RX device.

6. Click OK.

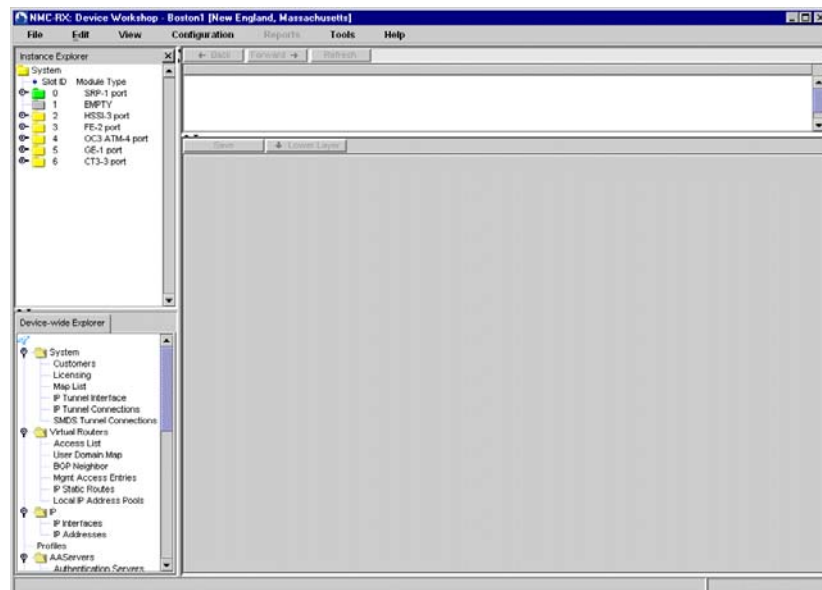
The new device appears immediately in the listing in the Network Workshop context area.

Task 3. Start the Device Workshop

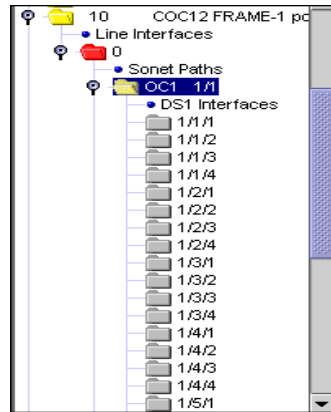
You can now configure your device by viewing it in the Device Workshop.

There are two ways to display the device in the Device Workshop:

- In the Network Workshop, double-click the E-series device that you want to configure. The Device Workshop for the selected device appears.



- In the Network Workshop, select the E-series device that you created, right-click, and select Configure.



The Device Workshop for the selected device appears.

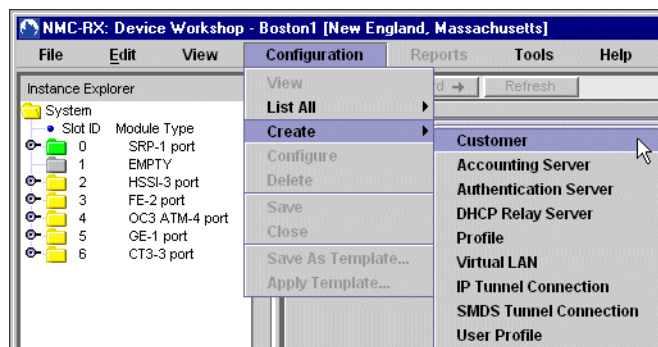
All modules present on the device are listed in the Instance Explorer in the Device Workshop.

Task 4. Create a Customer Profile

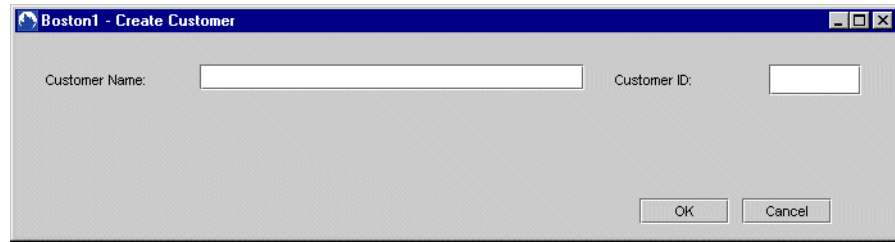
Within the NMC-RX application, you can create customer profiles. In this section, you will create a customer profile and set its basic identification parameters.

To create a customer profile:

1. In the Device Workshop, on the Configuration menu, select Create, and click Customer.



The Create Customer dialog box appears.

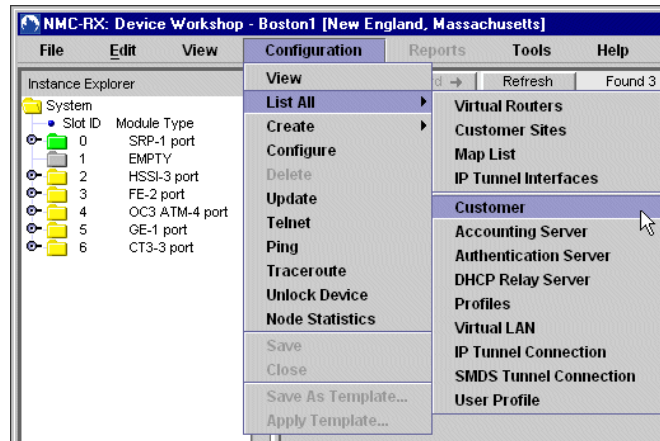


2. Enter the following information:
 - Customer Name: **AcmeTex**
 - Customer ID: **500800** (only numeric characters are allowed)
3. Click OK.
4. Repeat Steps 1–3 to create two additional customer profiles.

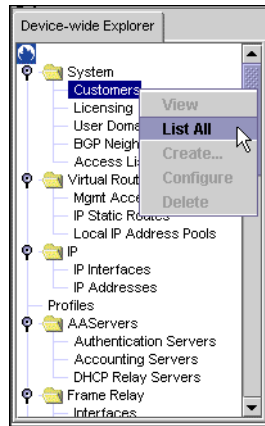
View Customer Profiles

To view all customer profiles:

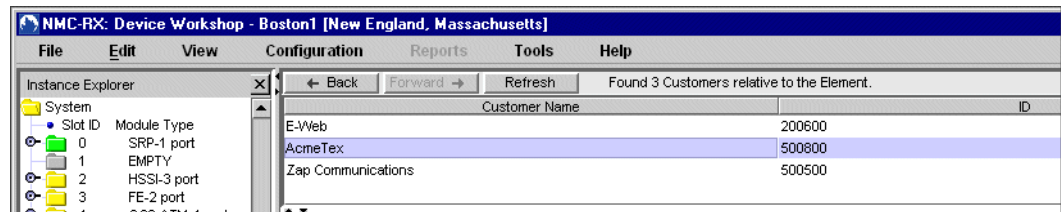
1. In the Device Workshop, on the Configuration menu, select List All, and click Customer.



You can also select Customers in the Device-wide Explorer, right-click, and select List All.



The customer *AcmeTex* and the other customer profiles you created appear in the list area.



2. Click the Customer Name column heading to sort the list.
3. Click the column heading again to reverse the sort order.

To learn more about working with customers, see *Chapter 8, Configuring Customer Accounts*.

Task 5. Configure an Object

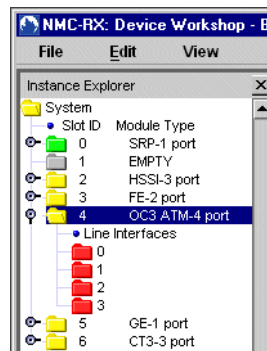
The section highlights the steps usually followed to configure any line module. This section assumes that you have an ATM line module in your device with no configured interfaces. If you do not have an ATM line module, use an available line module.

You can easily configure objects by using the Instance Explorer in conjunction with the Device-wide Explorer. Within the NMC-RX application, you use these tools to perform your configuration tasks.

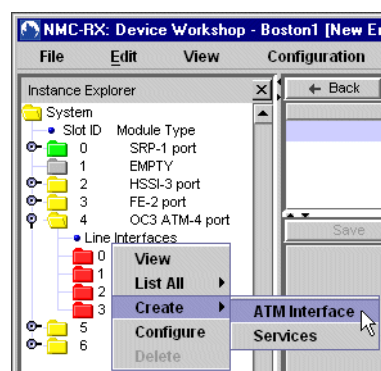
Create an ATM Interface

To create an ATM interface on an ATM module:

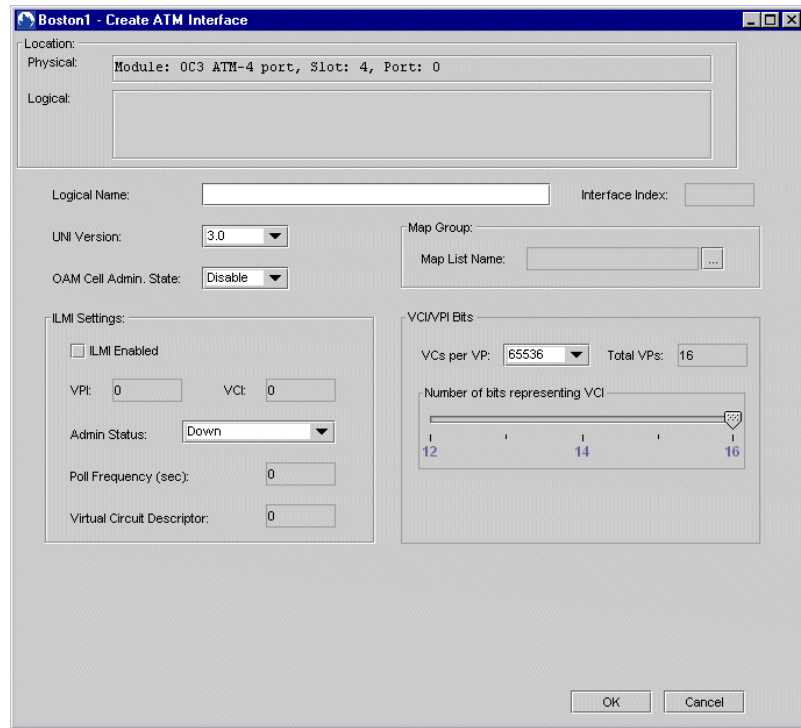
1. Navigate to the ATM module, and double-click the folder to open it.



2. Click line interface 0, right-click, select Create, and click ATM Interface.

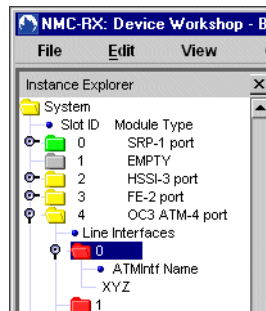


The Create ATM Interface dialog box appears.



3. Enter **XYZ** in the Logical Name field, and then click OK.

The XYZ ATM interface is added to the hierarchy.

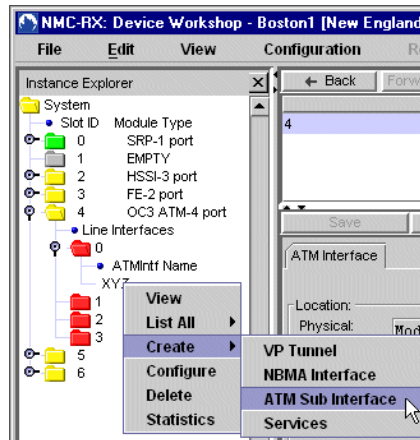


NOTE: You can create only one ATM interface per line interface.

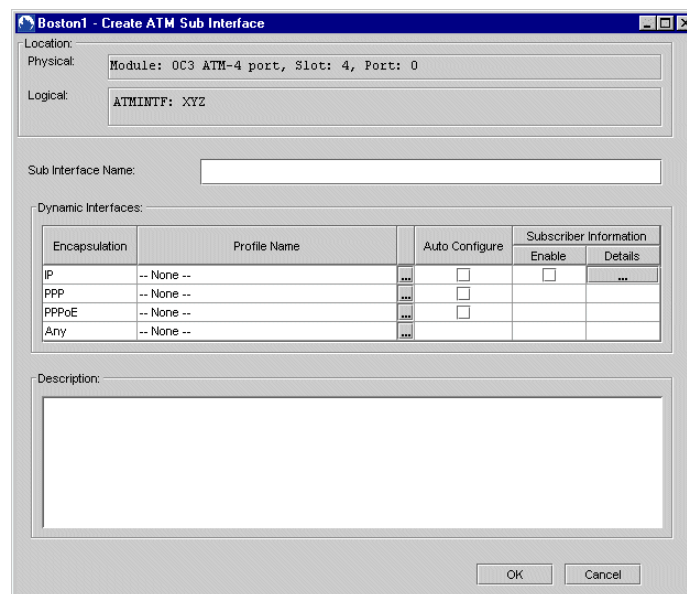
Create a Subinterface

To create an ATM subinterface on an ATM interface:

1. Click the interface you just created in the previous section (XYZ).
2. Right-click, select Create, and click ATM Sub Interface.



The Create ATM Sub Interface dialog box appears.



3. Enter **XYZ subinterface 1** in the Subinterface Name field and click OK.

The ATM subinterface appears in the list area.

Slot	Subinterface Name	IF INDEX
4	XYZ subinterface 1	184549381

View the ATM Interface

To view the ATM interfaces that you just created:

1. In the Device-wide Explorer, under ATM, select Interfaces.
2. Right-click, and then click List All.

The ATM interface that you created appears in the list area.

3. Select Subinterfaces, right-click, and select List All.

The ATM subinterface that you created appears in the list area.

For more information about ATM, see *Chapter 18, Configuring ATM*.