

## Chapter 20

# Configuring CBF Interfaces

This chapter describes how to create a connection-based forwarding (CBF) interface. CBF interfaces are created automatically when you create a Switched Multimegabit Data Service (SMDS) tunnel connection. However, you can also create a CBF interface individually.

This chapter contains the following sections:

- Overview on page 237
- References on page 238
- Creating CBF Interfaces on page 238

## Overview

---

CBF uses dedicated layer 2 interfaces, called CBF interfaces, that are configured at the top of interface columns for SMDS tunnel connections. CBF interfaces used in connection-based forwarding are analogous to IP interfaces used in IP routing.

A CBF interface runs over an SMDS trunk interface. Only one CBF interface is permitted per SMDS interface. The CBF interface forwards SMDS traffic among SMDS trunk interfaces.

CBF provides a simple mechanism for forwarding non-IP traffic directly between E-series devices. It is a method of forwarding frames in which forwarding decisions are based only on the identity of the ingress interface. In particular, no part of a packet's contents is used to determine how a packet should be forwarded.

CBF forwards frames along connections configured between pairs of interfaces. Frames received on a connection's ingress interface are forwarded directly to that connection's egress interface. The packet is transmitted from ingress to egress forwarding interfaces as the raw layer 2 payload received from the layer 2 interface. Both the ingress and egress interfaces are SMDS-encapsulated and have CBF interfaces associated with them. Once the connection between the ingress and egress interfaces is made, traffic begins to flow.

## References

See the following related chapters for additional information:

- *Chapter 21, Configuring CBF Interface Connections*
- *Chapter 28, Configuring SMDS Interfaces*
- *NMC-RX User Guide, Vol. 2, Chapter 9, Configuring IP Tunnel Interfaces*
- *NMC-RX User Guide, Vol. 2, Chapter 10, Configuring Tunnel Connections*

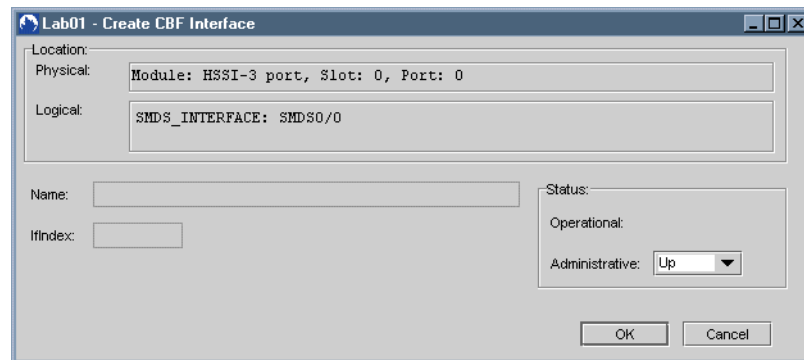
## Creating CBF Interfaces

When you create an SMDS tunnel connection, CBF interfaces are created automatically, but you can also create these interfaces individually.

To create a CBF interface:

1. In the Instance Explorer, select an SMDS interface.
2. Right-click, select Create, and click CBF Interface.

The Create CBF Interface dialog box appears.



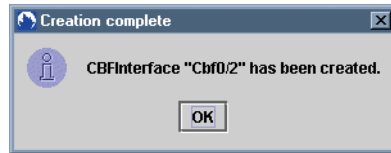
The CBF interface parameters described in Table 67 are generated automatically.

**Table 67: CBF Interface Parameters**

Parameter	Description
Name	Identifies the interface; generated automatically
IfIndex	Identifies the interface on the particular line interface; generated automatically
Operational	Current operational status of the interface
Administrative	Desired status of the interface: Up/Down; default: Up

3. Click OK.

The Creation complete dialog box appears.



4. Click OK.

