

Chapter 21

Configuring CBF Interface Connections

This chapter describes how to create connection-based forwarding (CBF) interface connections. These connections support both Switched Multimegabit Data Service (SMDS) and bridged IP interfaces.

This chapter contains the following sections:

- Overview on page 241
- References on page 241
- Creating CBF Connections on page 242
- Creating CBF Interface Connections on page 242

Overview

CBF connections forward frames along connections configured between pairs of interfaces. Frames received on a connection's ingress interface are forwarded directly to that connection's egress interface. The packet is transmitted from ingress to egress forwarding interfaces as the raw layer 2 payload received from the layer 2 interface. Both the ingress and egress interfaces are SMDS-encapsulated or bridged-IP encapsulated and have CBF interfaces associated with them. Once the connection between the ingress and egress interfaces is made, traffic begins to flow.

References

For more information, see the following related chapters:

- *Chapter 20, Configuring CBF Interfaces*
- *Chapter 28, Configuring SMDS Interfaces*
- *NMC-RX User Guide, Vol. 2, Chapter 9, Configuring IP Tunnel Interfaces*
- *NMC-RX User Guide, Vol. 2, Chapter 10, Configuring Tunnel Connections*

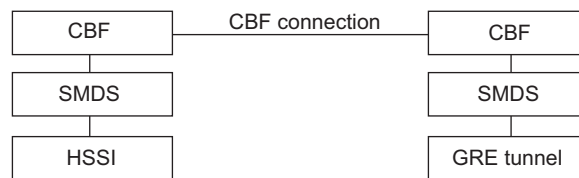
Creating CBF Connections

You can establish a CBF connection between two CBF interfaces. See *Chapter 20, Configuring CBF Interfaces*.

You can establish a CBF connection between two bridged IP interfaces. See *Chapter 19, Configuring Bridged IP*.

When you configure SMDS, you set up a CBF connection that connects the two CBF interfaces. (See Figure 15.)

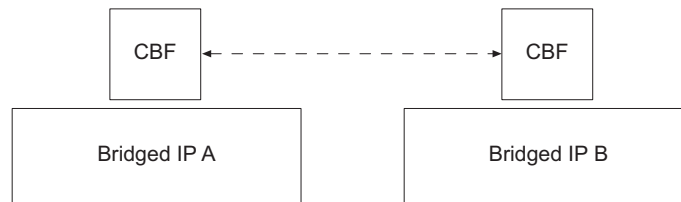
Figure 15: CBF Connection Between CBF/SMDS Interfaces



g014404

You can also establish a CBF connection between two bridged IP interfaces. See Figure 16.

Figure 16: CBF Connection Between Bridged IP Interfaces



g014403

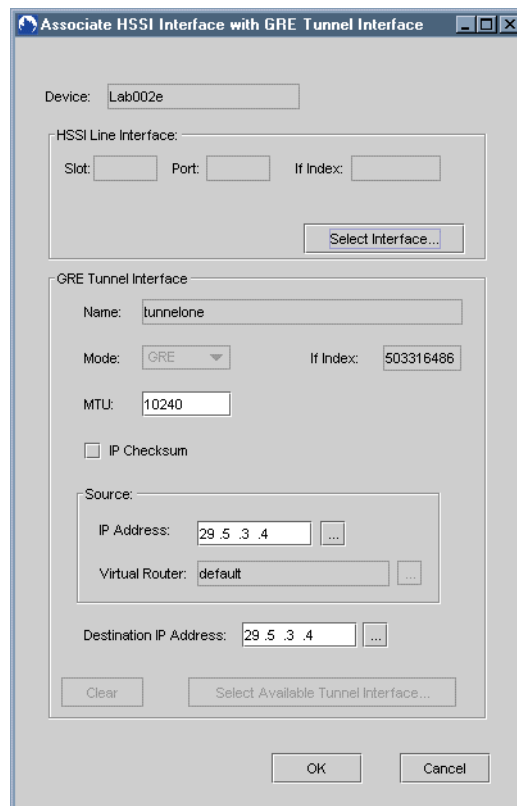
Creating CBF Interface Connections

You can create a CBF interface connection either through the SMDS Tunnel Connection dialog box or by executing an Associate Tunnel Interface action or an Associate HSSI Interface action.

The following procedure illustrates the creation of a CBF interface connection by means of an Associate HSSI Interface action:

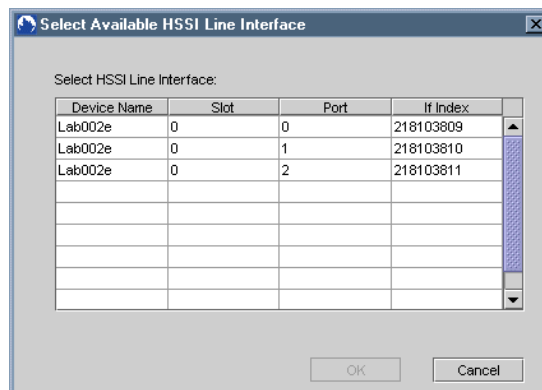
1. In the Device-wide Explorer, select IP Tunnel, right-click, and select List All.
The list of IP tunnel interfaces appears in the list area.
2. Click the appropriate IP tunnel interface.
3. Right-click, and select Associate HSSI Interface.

The Associate HSSI Interface with GRE Tunnel Interface dialog box appears.



- To select the high-speed serial interface (HSSI) line interface, click Select Interface.

The Select Available HSSI Line Interface dialog box appears.



- Select the line interface you want, and click OK.


The line interface's slot and port numbers appear in the HSSI Line Interface group box in the Associate HSSI Interface with GRE Tunnel Interface dialog box.

- Set the parameters for the GRE tunnel interface (Table 68).

Table 68: GRE Tunnel Parameters

Parameter	Description
MTU	Maximum transmission unit; range 1024–10240; default 10240. To function effectively, the MTU value must be the same for both endpoints.
Source: IP Address	Source IP address for the tunnel interface
Destination IP Address	Destination IP address for the tunnel interface



NOTE: You can set the IP address parameters either by typing the address in the text fields or by clicking the  buttons and selecting the addresses from the related dialog box that appears.

- Click OK.

The CBF interface connection is created.