

Chapter 9

Configuring IP Tunnel Interfaces

This chapter discusses the procedure for creating IP tunnel interfaces.

Topic	Page
Overview	103
References	103
Creating IP Tunnel Interfaces	103

Overview

IP tunnel interfaces are endpoints in a tunnel connection. These interfaces are created automatically when you create an IP or SMDS tunnel connection. The NMC-RX application also allows you to create IP tunnel interfaces individually. You can then associate these individual interfaces as endpoints in a tunnel connection.

References

See the following chapters for related information:

NMC-RX User Guide , Vol. 1, Chapter 20, Configuring CBF Interfaces

NMC-RX User Guide , Vol. 1, Chapter 28, Configuring SMDS Interfaces

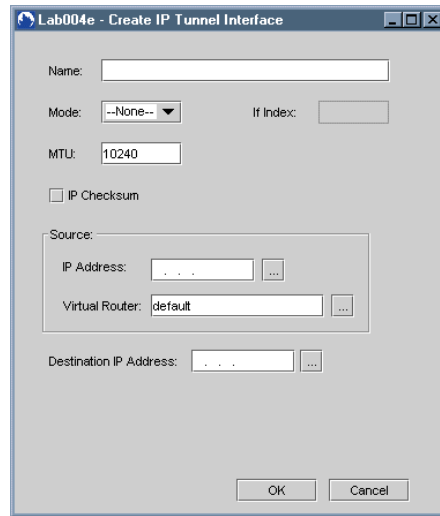
Chapter 10, Configuring Tunnel Connections

Creating IP Tunnel Interfaces

To create an IP tunnel interface individually:

1. In either the Instance Explorer or the Device-wide Explorer, click System, right-click, select Create, and click IP Tunnel Interface.

The Create IP Tunnel Interface dialog box appears.



2. Set the parameters. See Table 38.

You can set the source and destination IP addresses and the source virtual router in either of the following ways:

Enter the IP addresses and the virtual router name in the text boxes.

Select existing IP addresses and a virtual router by clicking  to the right of each parameter. See *Related Dialog Boxes* on page 105.

Table 38: IP Tunnel Interface Parameters





Parameter	Description
Name	Name for the IP tunnel interface; 1–80 characters, no spaces
Mode	IP tunnel mode for an IP tunnel: GRE or DVMRP. You must choose one of these modes.
If Index	This field is blank when you create an object and is automatically populated with the If Index identifier when you configure the object; uneditable.
MTU	Maximum transmission unit setting for the IP tunnel interface; range 1024–10240; default 10240. To ensure effective function, the MTU value should be the same for both endpoints.
IP Checksum	Selecting this box enables end-to-end check summing and causes the system to drop packets with bad checksums received on this interface. Range: enable/disable. Default: disable. This feature is disabled for DVMRP mode.
Source: IP Address	Source IP address for the IP tunnel interface. Enter a valid address or click  to search for and select an IP address (see <i>IP Tunnel Interfaces Related Dialog Boxes</i>).

Table 38: IP Tunnel Interface Parameters (continued)

Parameter	Description
Source: Virtual Router	Transport router associated with the source IP tunnel interface. You cannot edit this parameter once you create the tunnel interface. Once you choose a virtual router, you cannot change it. Enter a virtual router name, or click  to search for and select a virtual router (see <i>IP Tunnel Interfaces Related Dialog Boxes</i>).
Destination IP Address	Destination IP address for the tunnel interface. Enter a valid address, or click  to search for and select an IP address (see <i>Related Dialog Boxes on page 105</i>).

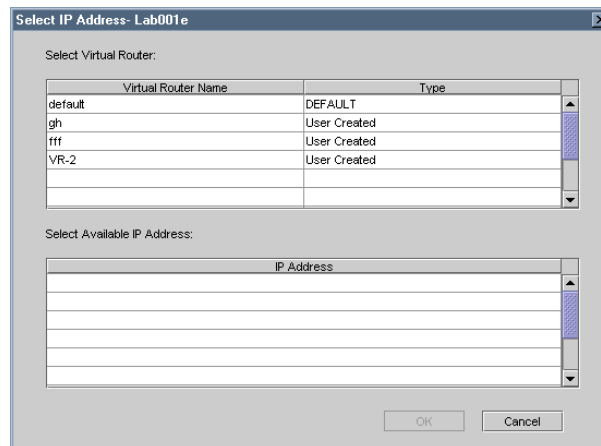
- When you have finished setting all the parameters, click OK in the Create IP Tunnel Interface dialog box to apply the settings to the IP tunnel interface you are creating.

Related Dialog Boxes

Source IP Address The  button to the right of the source parameter allows you to select an existing IP address (rather than create a new one).

- Click  next to the Source IP Address text box.

The Select IP Address dialog box appears. Use it to view and select an existing IP address.

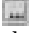


- Select a virtual router from the list.

A list of available IP addresses appears.

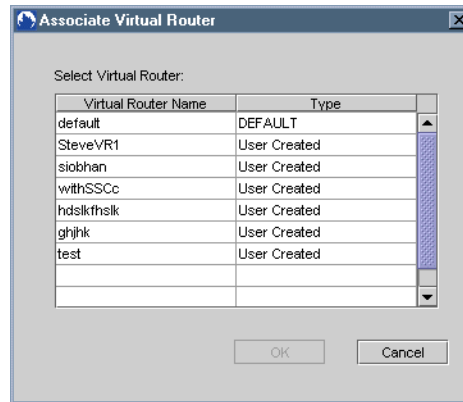
- Select an IP address.
- Click OK.

The IP address and the virtual router name appear in the Source group box in the Create IP Tunnel Interface dialog box for the particular device that you are configuring.

Source Virtual Router The  button to the right of the source parameter allows you to select an existing virtual router (rather than create a new one).


1. Click  next to the Source Virtual Router text box.

The Associate Virtual Router dialog box appears. Use it to view and select an existing virtual router if you need to change the virtual router that you selected above.



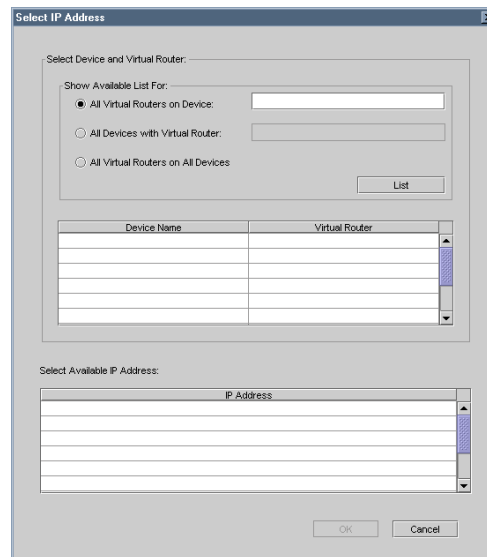
2. Select a virtual router from the list.
3. Click OK.

If you already selected a virtual router, a message asks if you want to replace the previously selected virtual router.

Destination IP Address The  button to the right of the destination parameter allows you to select an existing IP address (rather than create a new one).

1. Click  next to the Destination IP Address field.

The Select IP Address dialog box appears. Use it to view and select an existing IP address.



This dialog box allows you to set the following filters for selecting the destination IP address:

- All virtual routers on a particular device
- All devices that have the same virtual router
- All virtual routers on all devices

2. Select a filter, and click List.

A list of all the virtual routers appears.

3. Select a virtual router from the list.

A list of available IP addresses appears.

4. Select an IP address, and click OK.

The IP address appears in the Destination IP Address text box in the Create IP Tunnel Interface dialog box for the particular device that you are configuring.

Saving Parameter Settings

When you finish setting all the parameters for the IP tunnel interface, click OK in the Create IP Tunnel Interface dialog box to apply the settings to the tunnel interface.

