

Chapter 12

Configuring Unchannelized OC Modules

The NMC-RX application supports the following unchannelized optical carrier (OC) line modules:

OC3 (dual port)

OCx/STMx ATM

OCx/STMx POS

Topic	Page
Overview	151
Configuration Tasks	152
Configuring Modules	152
Configuring a Line Interface	153

Overview

OC modules provide high-speed communications between E-series routers and core routers in an ATM network. Several versions of unchannelized OC modules can be configured with the NMC-RX application.

OC line modules pair with I/O modules to provide particular capabilities and connections. For more information about unchannelized OC modules, see Table 36 and the *JUNOSe Physical Layer Configuration Guide*.

Table 36: OCx/STMx Unchannelized Line Modules and I/O Modules

Line Module	I/O Module	Description	NMC-RX Software Reference Name
OC3 (dual port)	OC3	2-port, supporting ATM and POS	OC3-2 port
OCx/STMx ATM	OC3-4	4-port, concatenated OC3/STM-1 module for ATM	OC3 ATM-4 port
	OC12/STM4	1-port, concatenated OC12/STM-4 module for ATM	OC12 ATM-1 port
OCx/STMx POS	OC3-4	4-port, concatenated OC3/STM-1 module for POS	OC3 POS-4 port

Table 36: OCx/STMx Unchannelized Line Modules and I/O Modules (continued)

Line Module	I/O Module	Description	NMC-RX Software Reference Name
	OC12/STM4	1-port, concatenated OC12/STM-4 module for POS	OC12 POS-1 port
OC48/STM16 POS	OC 48 FRAME APS	1-port, concatenated OC48/STM-16 module for POS NOTE: Requires two adjacent slots: either slots 2 and 3 or slots 4 and 5; second slot is listed as "EMPTY" in the Instance Explorer; only available on the ERX-1440 router	OC48 POS-1 port

Configuration Tasks

To configure an unchannelized OC module, complete the following tasks:

1. Set the parameters that provide basic identification and status information about the module.
2. Set the line interface parameters.
3. Configure an ATM or POS interface on the module. (See *Chapter 17, Configuring ATM* or *Chapter 25, Configuring POS*.)

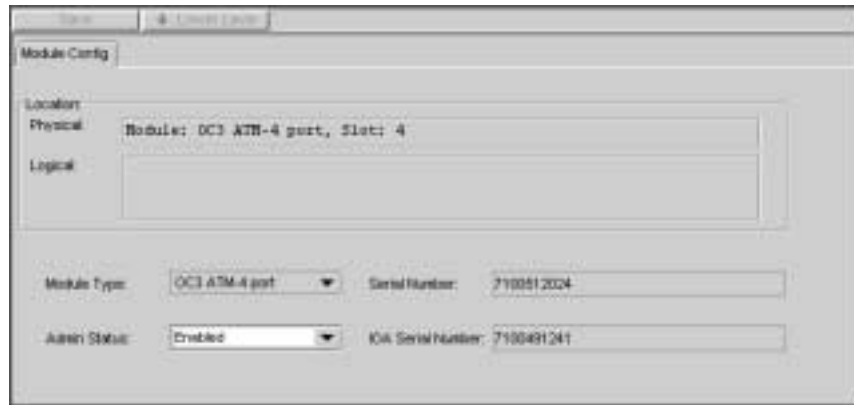
Configuring Modules

You can configure only a module's admin status (enabled or disabled).

To configure a module:

1. In the Instance Explorer list, select the module you want to configure.
2. Right-click, and click Configure.

The Module Config tab appears in the work area.



3. Set the module parameters. See Table 37.

Table 37: Module Configuration Parameters

Field	Description
Module Type	Module type (uneditable)
Admin Status	Enabled—Module is running Disabled—Module is not in operation
Serial Number	Ten-digit identification number (S/N) on the module's faceplate. This value is automatically retrieved from the device and is uneditable.
IOA Serial Number	Ten-digit identification number (S/N) on the input/output adapter's faceplate. This value is automatically retrieved from the device and is uneditable.

4. Click Save.

The settings are saved.

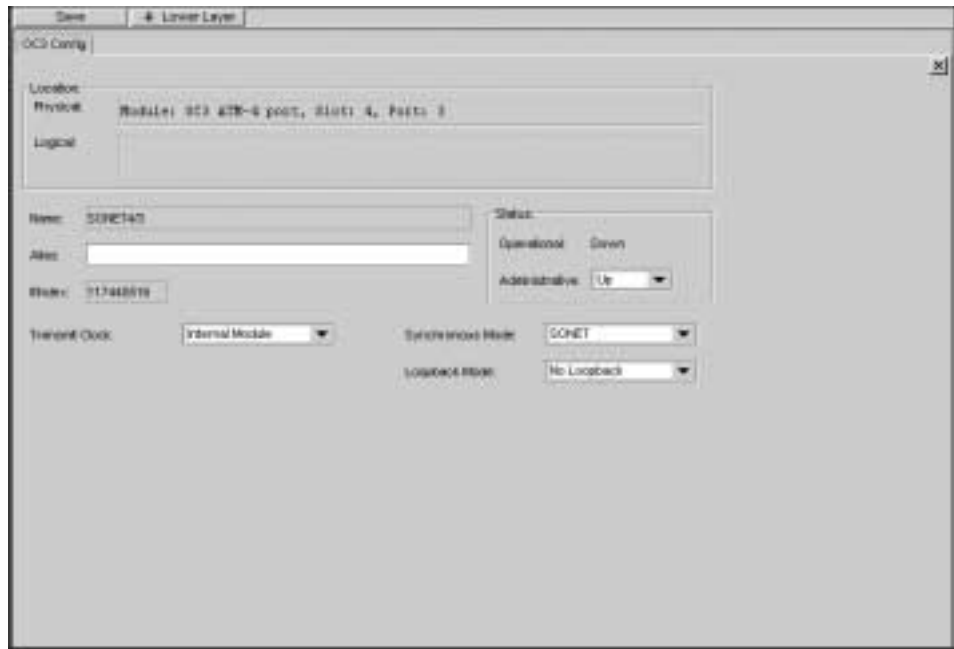
Configuring a Line Interface

An OCx module can have one, two, or four line interfaces.

To configure a line interface:

1. In the Instance Explorer, select the line interface you want to configure.
2. Right-click, and click Configure.

The OCx Config tab appears in the work area.



3. Set the line interface parameters. See Table 38.

Table 38: Line Interface Parameters

Field	Description
Name	Identifies the interface; generated automatically
Alias	Description of the interface; 0–15 characters; default: blank
IfIndex	Identifies the interface on the particular line interface; generated automatically
Operational	Current operational status of the interface
Administrative	Desired status of the interface: Up/Down; default: Up
Transmit Clock	Loop Timing—Device receives its clocking from a network source Internal Module—Device receives its clocking from a network source Internal Chassis—Device receives its clocking from the configured system clock
Synchronous Mode	SONET—Synchronous Optical Network SDH—Synchronous Digital Hierarchy
Loopback Mode	No Loopback—Disables loopback mode Line Loopback—Loops the data toward the network; connects the received network signal directly to the transmit network signal line. Internal Loopback—Loops the data toward the module’s interface; connects the local transmitted signal to the local received signal.

4. When you finish setting the line interface parameters, click Save.