

Chapter 5

Configuring the System

This chapter discusses viewing and modifying a device's configuration and updating its system-level attributes.

Topic	Page
Overview	57
Configuration Tasks	57
Viewing a Device Configuration	58
Modifying a Device Configuration	59
Updating a Device Configuration	65
Updating a Single Module or Port	66
Line Module Redundancy Groups	67
Configuring a Redundancy Module	68
System Logging	70
Using the User Inactivity Timer	72
Downloading Software Releases to Devices	74

Overview

The NMC-RX application allows you to manage devices on your network via a graphical user interface (GUI) and to modify a device's configuration from the Device Workshop.

Configuration Tasks

The NMC-RX application allows you to perform the following tasks on the device that you want to configure:

- View the device's current configuration.
- Modify the device's configuration.
- Update the device's configuration.

Viewing a Device Configuration

You can view the current configuration of any device on your network from either the Network Workshop or the Device Workshop.

To view a device's configuration from the Network Workshop:

1. In the context area, select the device whose configuration you want to view.
2. Right-click, and click View.

The device's current configuration appears.

The screenshot displays the 'System Info' configuration window for a device. The window is divided into several sections:

- System Info:** System Name: JNFR1400, System Type: ERX-700, Primary Address: 10.6.129.203, Software Version: 5.0.0 beta-1.9 [Buildid 439] Jan ..., System Up Time: 1 day, 1 hours, 59 minutes, 18 seconds, Chassis Revision: 0, System Contact: Siobhan Tully, Fan Tray Status: OK, System Location: swlab, Default BGP Template: [empty] ...
- System Memory:** Total (M): 536, Available (M): 375, Usage: 30%, High Memory Threshold (%): 85, Abated Memory Threshold (%): 75, Memory Utilization Trap
- L2TP Parameters:** Admin State: enable, IP Checksum, Destruct Timeout: 600
- Global Redundancy Revert:** Control: off, Time Of Day (hh:mm:ss): 00:00:00
- Non-Volatile Storage (NVS):** Status: OK, Total (M): 488, Available (M): 195, Usage: 60%
- Fabric:** Fabric Speed (Gps): 10, Fabric Rev: 8
- Trap Proxy:** Enabled
- Virtual Router:** [empty] ...

To view the device's configuration from the Device Workshop:

1. From either the Instance Explorer or the Device-wide Explorer, select the System folder.
2. Right-click, and click View.

The System Info tab appears in the work area.



NOTE: In View mode, you cannot modify a device's configuration.

Modifying a Device Configuration

From the Device Workshop, you can modify most system attributes. You can do this via the Instance Explorer or the Device-wide Explorer.

To modify a device's configuration:

1. From either the Instance Explorer or Device-wide Explorer, select the System folder, right-click, and click Configure.

The System Info tab displays the current configuration of the device and has editable fields.

The screenshot shows the 'System Info' configuration window for a Juniper ERX-700 router. The window is divided into several sections:

- System Info:** System Name: JNPR1400, System Type: ERX-700, Primary Address: 10.6.129.203, Software Version: 5.0.0 beta-1.9 [Buildid 439] Jan ..., System Up Time: 1 day, 1 hours, 41 minutes, 34 seconds, Chassis Revision: 0, System Contact: Siobhan Tully, Fan Tray Status: OK, System Location: swlab, Default BGP Template: [empty]...
- System Memory:** Total (M): 536, Available (M): 375, Usage: 30%, High Memory Threshold (%): 85, Abated Memory Threshold (%): 75, Memory Utilization Trap: [unchecked]
- L2TP Parameters:** Admin State: enable, IP Checksum: [unchecked], Destruct Timeout: 600
- Global Redundancy Revert:** Control: off, Time Of Day (hh:mm:ss): 00:00:00
- Non-Volatile Storage (NVS):** Status: OK, Total (M): 488, Available (M): 195, Usage: 60%
- Fabric:** Fabric Speed (Gps): 10, Fabric Rev.: 8
- Trap Proxy:** Enabled: [unchecked], Virtual Router: [empty]...

2. Modify the parameter settings. See Table 8.

Table 8: System Configuration Parameters



Parameter	Description
System Name	Name you assign to the E-series router
Primary Address	IP address to be used to communicate with the E-series router
System Up Time	Amount of time in hours, minutes, and seconds that the system has been running
System Contact	Contact person for the device (optional)
System Location	Location of the device (optional)
Default BGP Template	Click  to select a BGP template from the Apply Template dialog box. See <i>Related Dialog Boxes</i> .
System Type	E-series router

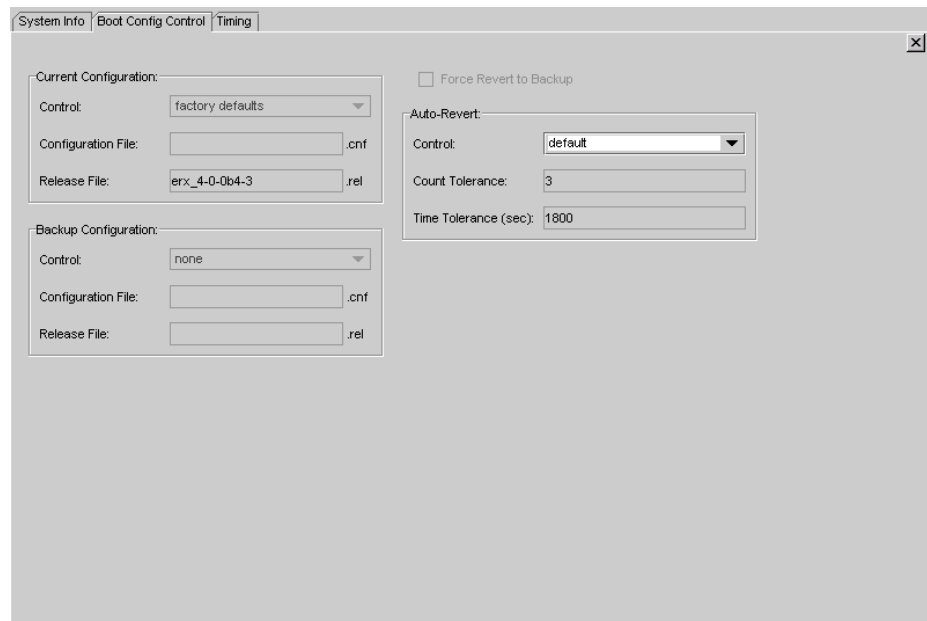
Table 8: System Configuration Parameters (continued)

Parameter	Description
Software Version	Version of JUNOS software running on the device
Chassis Revision	Chassis revision number
Fan Tray Status	Status of the fan tray; not editable; range: Failed, OK
System Memory	
Total (M)	Total memory capacity of the system; not editable; range 0–2147483647 bytes
Available (M)	Amount of unused memory; not editable; range 0–2147483647 bytes
Usage	Percentage of system memory utilization; not editable; range –1 through 100; value of –1 indicates utilization unknown
High Memory Threshold (%)	Value of system memory utilization; if reached for first time, generates high memory utilization event notification to the management entity on the system; range –1 through 100; default 85
Abated Memory Threshold (%)	Value of system memory utilization used to determine when to generate an abated memory utilization event notification to the management entity on the system; range –1 through 100; default 75
Memory Utilization Trap	Controls sending system memory utilization events; options: On, Off; default: Off
L2TP Parameters	
Admin State	Enable or disable Layer 2 Tunneling Protocol (L2TP) for your E-series router NOTE: The NMC-RX application offers full support for tunnel server cards.
IP Checksum	Enable or disable (default) checking data integrity
Destruct Timeout	Time period in the range 10–3600 seconds (1 hour) for which the E-series router maintains dynamic destinations, tunnels, and sessions
Global Redundancy Revert	
Control	Global revert control; range: off, immediate, time of day; default: off
Time of Day	Number of seconds past midnight on any given day at which time reversions are allowed to occur. Editable only if set to time of day; range 00:00:00 to 23.59.59; default 00:00:00
Non-Volatile Storage (NVS)	
Status	State of NVS
Total (M)	Percentage of total capacity of NVS
Available (M)	Amount of unallocated NVS
Usage	Total NVS currently allocated
Fabric	
Fabric Speed (GPS)	Either 5 Gbps or 10 Gbps
Fabric Rev	Revision number of the fabric board on the E-series device

Table 8: System Configuration Parameters (continued)

Parameter	Description
Trap Proxy	
Enabled	Configuration setting for SNMP trap proxying. Enabling the trap proxy configures the associated SNMP agent to proxy internally generated traps. Options: Enabled or Disabled; default: Disabled
Virtual Router	Name of the virtual router that is configured for trap proxying. Click  to select a virtual router from the Associated Virtual Router dialog box. See <i>Related Dialog Boxes</i> .

3. Click Save.
4. Click the Boot Config Control tab.



5. Modify the parameter settings. See Table 5-2.

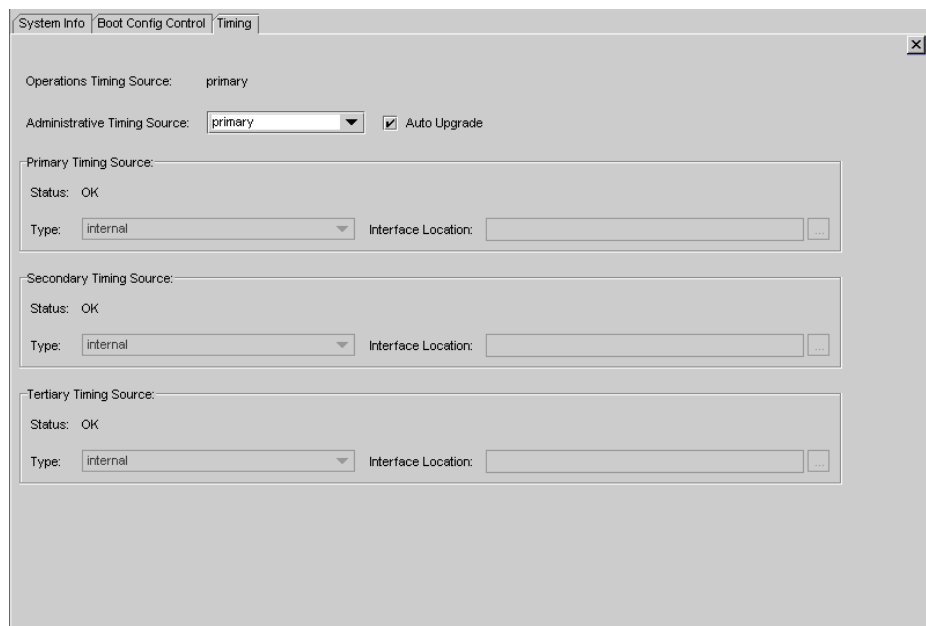
Table 9: System Boot Parameters

Parameter	Description
Force Revert: to Backup	Forces the system to revert to the backup configuration regardless of the Auto-Revert parameter settings the next time the system is rebooted
Current Configuration	
Control	Current system boot configuration control; default: running configuration; not editable in Release 4.0
Configuration File	Current local boot configuration filename, with extension .cnf; default: blank; not editable in Release 4.0

Table 9: System Boot Parameters (continued)

Parameter	Description
Release File	Current local boot release filename, with extension .rel; default blank; not editable in Release 4.0
Backup Configuration	
Control	Backup system boot configuration control; default running configuration; default: none; not editable in Release 4.0
Configuration File	Local backup boot configuration filename, with extension .cnf; default: blank; not editable in Release 4.0
Release File	Local backup boot release filename, with extension .rel; default: blank; not editable in Release 4.0
Auto-Revert	
Control	Forces the system to revert to the backup configuration if the primary configuration fails beyond the configured tolerance values; default: default
Count Tolerance	Editable only if Auto-Revert Control is set to "set"; default 3
Time Tolerance	Time tolerance in seconds; editable only if Auto Revert Control is set to "set"; default 1800

6. Click Save.
7. Click the Timing tab.



8. Modify the parameter settings. See Table 10.

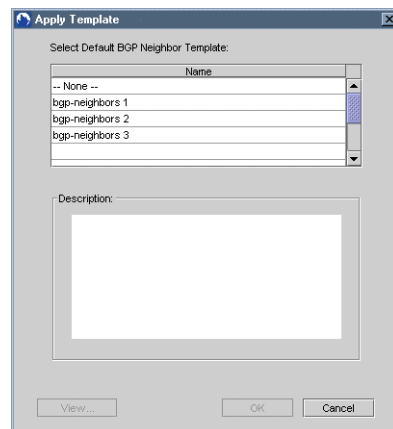
Table 10: System Timing Parameters

Parameter	Description
Operations Timing Source	If the E-series router's current timing source fails, the system automatically downgrades to the next timing source. Not editable; default: primary
Administrative Timing Source	If Auto-Upgrade is enabled, the system never attempts to upgrade to a source higher than the selected administrative timing source. Default: primary
Auto-Upgrade	Controls the automatic timing selector upgrade. If the system's current timing source fails, the E-series router automatically downgrades to the next timing source. Enabling this parameter causes the E-series router to automatically switch back to a higher timing source when that source becomes available. Disabling this parameter prevents automatic upgrade to the next highest timing selector.
Timing Source (Primary/Secondary/Tertiary)	
Status	Status associated with the timing selector; not editable; default: Unknown
Type	System timing source type; only editable for JUNOS versions 4.1.0 and later
Interface IF Index	Editable only if the timing source type is Interface IF Index

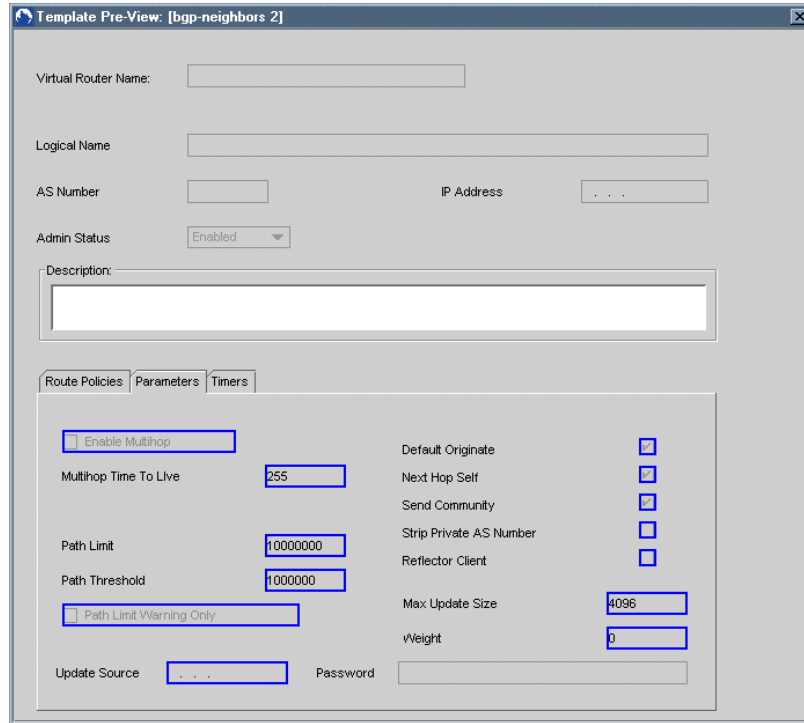
9. Click Save.

Related Dialog Boxes

Apply Template The Apply Template dialog box appears when you click  in the description column next to Default BGP Template on the System Info tab. Use it to select a template.




1. Click a template.
2. (Optional) Click View to display the template's full configuration.

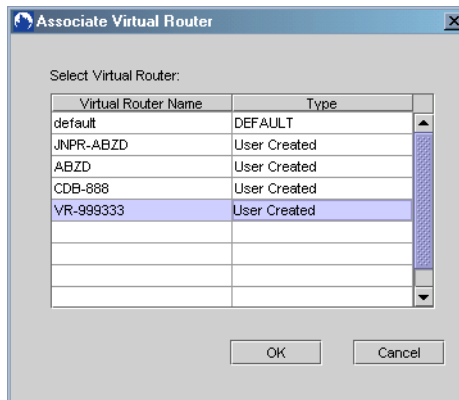


3. Close the Template Pre-View dialog box.
4. Click OK in the Apply Template dialog box.

The information is entered in the Default BGP Template text box in the System Info tab.

Associate Virtual Router

The Associate Virtual Router dialog box appears when you click  in the description box next to Virtual Router on the System Info tab. Use it to select a virtual router.



1. Click a virtual router.

2. Click OK.

The virtual router name is entered in the Virtual Router text box in the System Info tab.

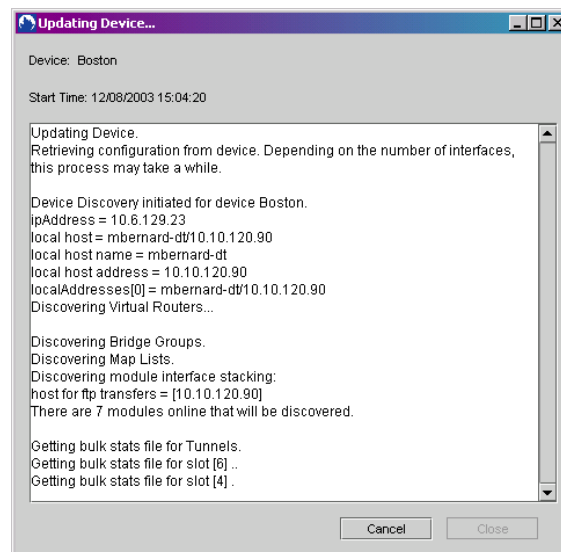
Updating a Device Configuration

You can update the NMC-RX configuration for the device to match the current configuration on the physical device.

To update your system:

1. In either the Instance Explorer or the Device-wide Explorer, select System, right-click, and click Update.

The Updating Device progress dialog box appears and indicates that the NMC-RX application is downloading the most recent configuration from the device.

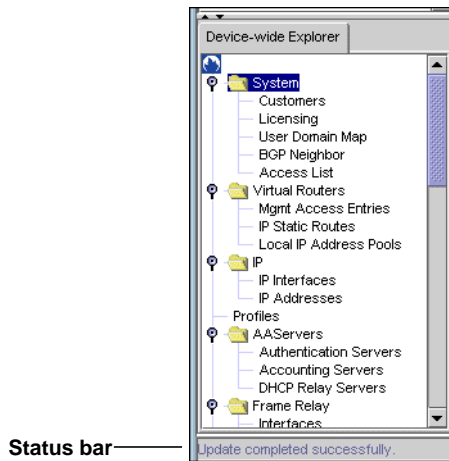


NOTE: Once NMC-RX begins to automap the device, closing the Creating Device dialog box or clicking the Cancel button results in a confirmation dialog box.

If any errors or warnings occur during the update, they appear in the Updating Device dialog box. Following the update, a pop-up dialog box appears for any error or warning.

2. If you want to update the device regardless of the error or warning, click Yes.

When the process is finished, the status of the configuration appears in the status bar at the bottom of the window.



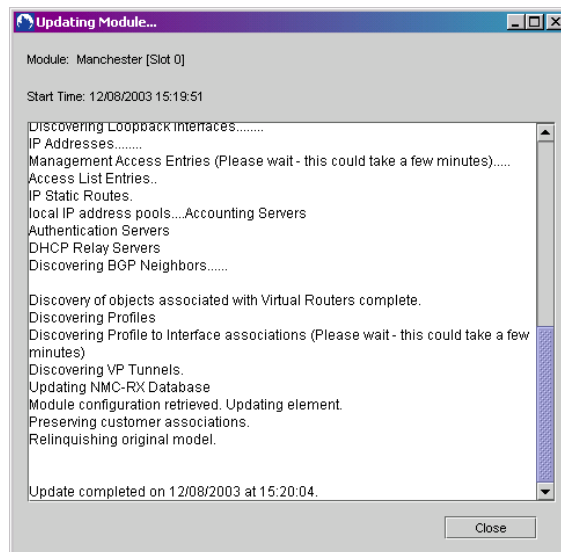
Updating a Single Module or Port

You can update the NMC-RX configuration for a single module or port to match the current configuration on the physical device.

To update a single module or port:

1. In the Instance Explorer, select the module or port, right-click, and click Update.

The Update Module window or Update Port window (not shown) appears.

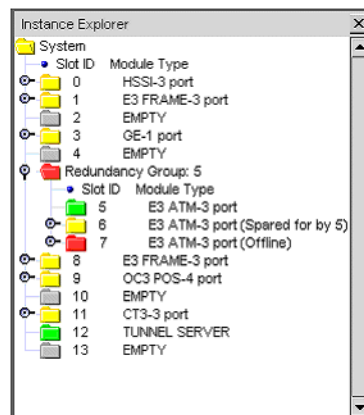


If any errors or warnings occur during the update, they appear in the Updating Device dialog box. If only warnings occur, the update continues. However, if any errors occur, the update does not take place.

2. Click Close after the update is complete.

Line Module Redundancy Groups

The NMC-RX software can recognize line module redundancy groups on a device and display which module is active and inactive (spared for). A redundancy group folder is created in the Instance Explorer, and the line modules in that group are placed in it.



See Table 11 for common redundancy group terms.

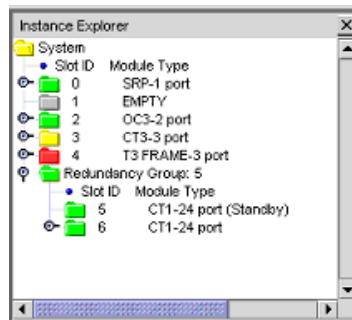
Table 11: Line Module Redundancy Group Terms

Term	Description
Redundancy group	Group of line modules containing a spare and one or more primary line modules in adjacent slots. To have a redundancy group, a special midplane must be installed that allows the spare line module to take over (or spare) for any of the primary line modules. Redundancy groups come in several sizes from 2 to 6 line modules. For example: 2-module group is referred to as 1+ 1 (1 primary + 1 spare) redundancy 3-module group is referred to as 2+ 1 (2 primary + 1 spare) redundancy 6-module group is referred to as 5+ 1 (5 primary + 1 spare) redundancy
Spare line module	Line module in the lowest-numbered slot of the redundancy group. The spare takes over when a primary line module goes offline. Not configurable (except for admin status)
Primary line module	Active line module that is not a spare When offline, primary line modules are spared for by the spare line module in the group. Configurable when online and when being spared for If there are multiple offline primary line modules, only one can be spared for.

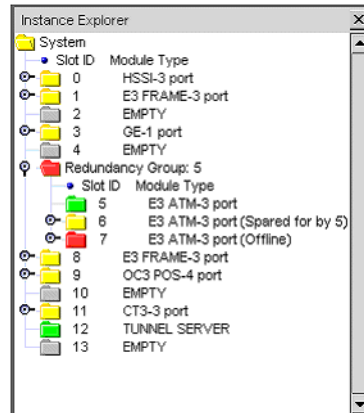
Table 11: Line Module Redundancy Group Terms (continued)

Term	Description
Sparing for	Act of a spare line module taking over for a primary line module When the primary line module is offline, the spare line module's state changes from standby to online. This process is also called switchover or failover.

Example 1 In this example, slot 5 has a spare line module in standby mode, and slot 6 has a primary line module that is online in a 1+ 1 redundancy group. Note that the group is issued an ID (5).



Example 2 In this example, slots 5 through 7 are in a 2+ 1 redundancy group. The spare line module in slot 5 is currently sparing for the primary line module in slot 6, which is inactive. The primary line module in slot 7 is also inactive, but because the spare line module is already sparing for slot 6, slot 7 is colored red and labeled Offline.



Configuring a Redundancy Module

When configuring a line module, you can set redundancy features by clicking the Redundancy tab. The tab is visible only when the current slot is a member of a redundancy group and is a primary module. The tab is not displayed for spare line modules.

You can perform the following redundancy tasks:

Force a failover to the spare line module.

Prevent the spare line module from taking over for the slot the line module is in.

Revert to the primary line module at a particular time and date.



NOTE: See each line module chapter for information about how to configure the module.

To configure module redundancy:

1. In the Instance Explorer, select the module you want to configure, right-click, and click Configure.
2. Click the Redundancy tab.
3. Set the parameters. See Table 12.

Table 12: Module Redundancy Parameters

Parameter	Description
Control	Allows you to revert control to the primary module at a specific time Off—Default Time and Date—Select a specific time and date Immediate—Available if module is inactive
Time, Date	Enables you to select a specific time and date to revert control to the primary line module Available when Time and Date is selected from Control
Force Failover	Select to make the current slot inactive and cause the spare line module to take over Enabled only when the primary line module is online
Lockout	Prevents the spare line module from taking over for the slot. Selecting Force Failover, however, overrides Lockout.

4. Click Save.

System Logging

The NMC-RX application has a logging feature that records several attributes, actions, events, and errors of the system. One log file is saved for each client session and is stored in the /log directory of the NMC-RX installation directory.

The following filename format is used:

```
nmcrlxlogMMDDYYYY_HHMMSS.log
```

By default, logging is enabled when the application is installed. To turn logging off, open traceLog.rc (located in the NMC-RX installation directory), change nmcrlxLogFileOn= On to nmcrlxLogFileOn= Off, and save the file.

See the following sections for types of information logged.

User Login Actions

User login actions are logged when a user logs in or logs out. The following message format is used:

```
MM/DD/YYYY HH:MM:SS user:[username/Privilege Level] Message
```

where:

MM/DD/YYYY—Month, day, year

HH:MM:SS—Hour, minute, second

username—Name can be 1–32 characters and must contain at least one alphabetic and one numerical character. If the username = admin, the default privilege level of “all privileges” is used.

privilege level—Determines the privileges that are assigned to the user. Letter codes are used as follows:

s—Security

b—Backup

v—View

c—Create

m—Configure

d—Delete

e—Execute

Message—User login action

See username and privilege level examples in Table 13.

These actions include authorized client logins, unauthorized login attempts, user login changes, and user password changes.

Table 13: User Login Actions

Type	Description	Example
Authorized client login	Logs a successful user login	11/13/2003 08:56:19 user:[jdoe7/--v----] logged in
Unauthorized login attempts	Failed login entries show the attempted login ID, as well as the reason for failure	11/13/2003 09:02:23 user:[admin/sbvcmd] login failed, invalid password
User login changes	A logout entry occurs when the user exits the NMC-RX application	11/13/2003 08:57:31 user:[jdoe7/--v----] logged out
	When a logged-in user changes login, it is considered to be the logout of the user and a subsequent login of a new user	11/13/2003 08:57:31 user:[jdoe7/--v----] logged out 11/13/2003 08:58:19 user:[msmith/--v----] logged in
User password changes	Logs when a user password is changed	11/13/2003 13:46:41 user:[admin/sbvcmd] Password changed for User [jsmith2]

Execute-Only Actions

Execute-only actions are logged when they are started. The following message format is used:

```
MM/DD/YYYY HH:MM:SS user:[username/Privilege Level] action_name message
```

These actions include ATM ping, ping, telnet, and traceroute. The log entry includes relevant device information. For example:

- Example 1** 11/13/2003 08:57:31 user:[jdoe7/--v----] Ping from NMC-RX to 10.6.129.203
- Example 2** 11/13/2003 09:57:31 user:[jdoe7/--v----] Ping from 10.6.129.203 to 112.34.55.2
- Example 3** 11/13/2003 10:57:31 user:[jdoe7/--v----] telnet 10.6.129.203

Processing Actions

For actions that may take a long time to process, both the start and end time are recorded. The following message format is used:

```
MM/DD/YYYY HH:MM:SS user:[username/Privilege Level] action_name <initiated|completed|standby>
message on device_ID
```

These actions include create, configure, delete, device updates, and configuration save and restore. For example:

Example 1

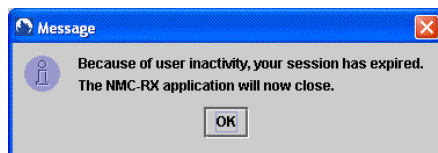
```
11/18/2003 15:56:00 user:[admin/sbvcmd] List Area create initiated on ATM Interface [ATM3/3]
11/18/2003 15:56:14 user:[admin/sbvcmd] List Area create complete ATM Interface [ATM3/3]
Created ATMSubIntf ATM3/3.3
```

Example 2

```
11/18/2003 15:56:00 user:[admin/sbvcmd] update initiated on 10.6.129.12
.
.
.
11/18/2003 16:16:00 user:[admin/sbvcmd] update completed on 10.6.129.12
```

Using the User Inactivity Timer

The user inactivity timer enables you to set a period of time that the NMC-RX application waits before closing due to user inactivity. If you do not perform any tasks (view, configure, update, etc.) in the time specified, a message dialog box appears indicating that your session has ended.



When you click OK, all open dialog boxes and workshops close and the NMC-RX application exits. You must relaunch the application and log in again to continue using it.

The timer is reset each time you click the mouse or press a keyboard key within the NMC-RX application. When the application is busy, the timer is disabled but restarts when the task is completed.

Configuring the User Inactivity Timer



NOTE: Only users with a security privilege may configure the user inactivity timer.

To enable or disable the user inactivity timer:

1. From the Configuration menu, select Security > User Inactivity Timer.

The User Inactivity Timer tab appears in the work area.



2. Set parameters (see Table 14).

To enable the timer, select the Enable Inactivity Timer check box and enter a value in the field.

To disable the timer, clear the Enable Inactivity Timer check box.

Table 14: User Inactivity Timer Parameters

Parameter	Description
Enable Inactivity Timer	Enables or disables the timer
Inactivity timeout (min)	Number of minutes to wait before exiting the application during a period of inactivity; range 5-1000 minutes; default is set during installation

3. Click Save.

All current sessions will be updated the next time the timer starts.

Downloading Software Releases to Devices

You can remotely download JUNOS software releases from a centralized location to one or more E-series routers. For example, you can select a specific software release and then download the file to multiple E-series routers at the same time.

Software releases must be stored on an FTP server that has been set as the Software Release Repository in the Software Download Settings work area of the NMC-RX application. The FTP user assigned to the NMC-RX application to access the Software Release Repository must be configured to have read permission. List permission is optional, but without it the software release files to download must be typed rather than selected.

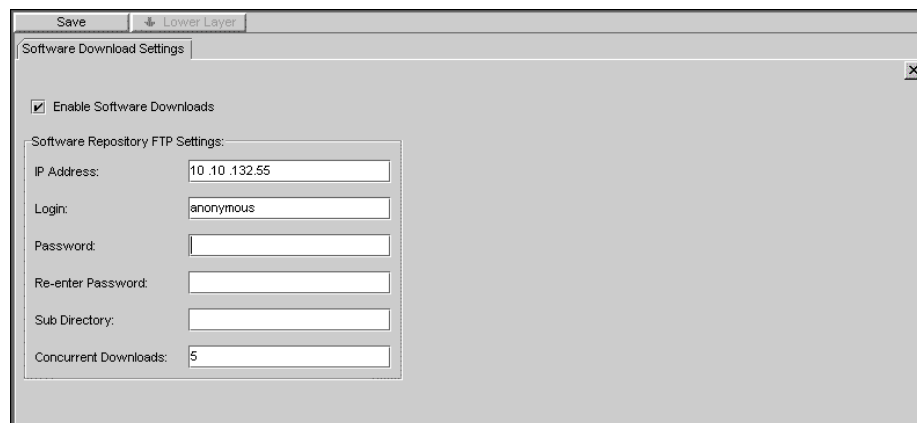
Configuring Software Download Settings

The Software Download Settings tab allows you to enable the download software feature and to configure the Software Release Repository FTP server settings used to download the software. If the FTP server is not enabled, software cannot be downloaded to E-series routers using the NMC-RX application.

To configure software download settings:

1. From the Configuration menu in either the Network Workshop or the Device Workshop, select Software Download Settings.

The Software Download Settings tab appears in the work area.



2. Set the Software Download Settings parameters. See Table 15.

Table 15: Software Download Parameters

Parameter	Description
Enable Software Downloads	Select to enable software downloads; clear to disable the feature
Software Repository FTP Settings	
IP Address	IP address of the Software Release Repository where the software is stored

Table 15: Software Download Parameters (continued)

Parameter	Description
Login	User login ID for the FTP site; can be up to 32 characters; default: anonymous
Password	User login password for the FTP site. The password entry will be masked with "*" characters. The password cannot be empty and can be up to 1024 characters.
Sub Directory	Path from FTP root to the NMC-RX software releases directory; optional; range 255 characters
Concurrent Downloads	Maximum number of downloads that are allowed at the same time with the FTP server; range: 1-10; default: 5

3. Click Save.

Downloading Software Releases to Devices

The download software feature is available in both the Network Workshop and the Device Workshop.

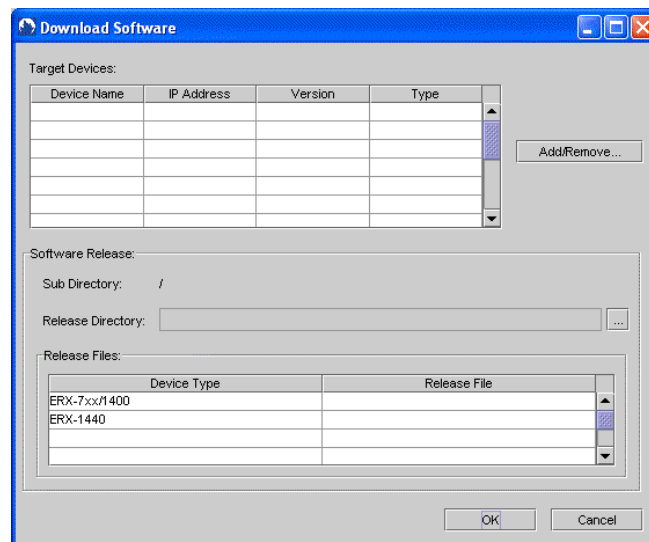
You can download a software release to one or more devices at the same time using the Network Workshop. From the Network Workshop, you can download to one or more devices. From the Device Workshop, you can download to only one device.

Downloading Software to Multiple Devices

To download software to multiple devices:


1. From the Network Workshop Tools menu, select Device Utilities> Download Software.

The Download Software dialog box appears.



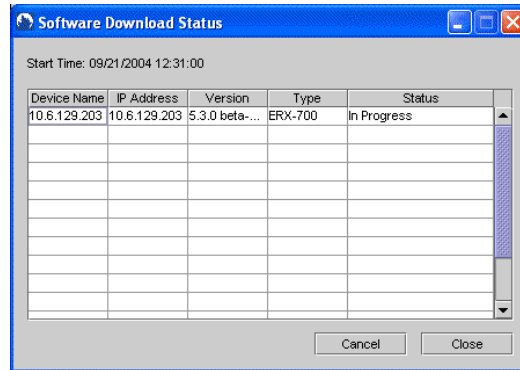
2. Select the target devices to which you want to download the software and select the software release directory on the FTP server. See Table 16.

Table 16: Download Software Parameters

Parameter	Description
Target Devices	List of devices to which the software will be downloaded; click Add/Remove to add or remove devices to or from the list; see <i>Network Workshop Related Dialog Boxes</i> on page 78.
Software Release	
Sub Directory	Subdirectory of FTP root that contains the software releases
Release Directory	Directory path from the FTP root directory containing the software releases; click  to choose the directory; see <i>Network Workshop Related Dialog Boxes</i> on page 78.
Release Files	List of software releases to be downloaded to the target devices

3. Click OK.

The selected software releases are then validated. If validation is unsuccessful, an information dialog box appears listing the errors. If successful, downloading begins and the Software Download Status dialog box appears and shows the status of each download.



Clicking Cancel, Close, or the  button cancels any queued downloads, but continues any downloads already in progress. Currently pending downloads cannot be canceled.

Downloading Software to One Device

To download software to only one device:

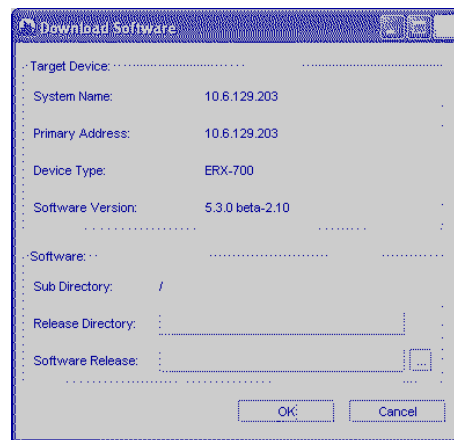
1. Use one of the following methods to begin:

From the Device Workshop Tools menu, select Device Utilities> Download Software.

In the Device Workshop, click the System folder, right-click, and click Download Software.


In the Network Workshop, select a device, right-click, and click Download Software.

The Download Software dialog box appears.



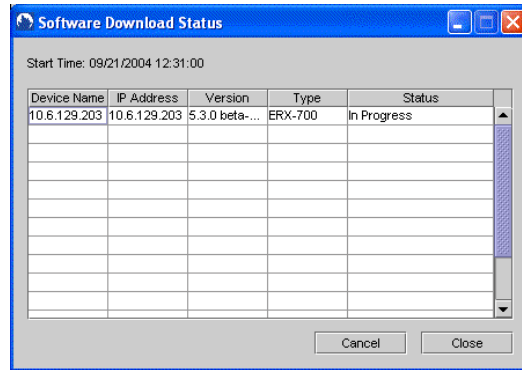
2. Select the software release on the FTP server. See Table 17.

Table 17: Download Software Parameters

Parameter	Description
Target Devices	Information concerning the device to which you are downloading the software.
Software	
Sub Directory	Subdirectory of FTP root that contains the software releases
Release Directory	Directory path from the FTP root directory containing the software releases
Software Release	Name of software release to be downloaded to the selected device; click  to choose the file; see <i>Device Workshop Related Dialog Boxes</i> on page 80

3. Click OK.

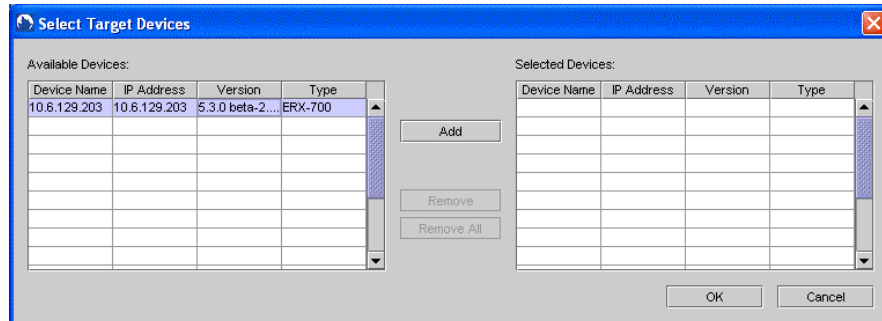
The selected software release is then validated. If validation is unsuccessful, an information dialog box appears listing the errors. If successful, downloading begins and the Software Download Status dialog box appears and shows the status of the file.



Clicking Cancel, Close, or the button cancels any queued download, but continues any download in progress. Currently pending downloads cannot be canceled.


Network Workshop Related Dialog Boxes

Select Target Devices The Select Target Devices dialog box appears when you click the Add/Remove button in the Download Software dialog box. Use it to add or remove devices to or from the Target Devices list.



1. Select a device from the list and click Add.
2. Click OK.

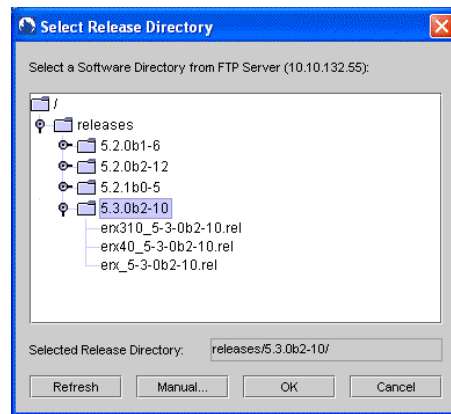
The devices are added to the Target Devices list.

Select Release Directory The Select Release Directory dialog box appears when you click  to the right of the Release Directory field in the Download Software dialog box. Use it to select a software directory from the FTP server that contains the software release you want to download.

Only release files and folders containing release files are displayed.



NOTE: Depending on the size of the software release repository, there may be a delay in listing the directories.



1. Click the folder that contains the software release you want to download.
2. Click OK.

The information is displayed in the Download Software dialog box.

Select Release Files Manually The Select Release Files Manually dialog box appears when you click Manual in the Select Release Directory dialog box. Use it to manually enter the release directory and release file field.

1. Enter the release directory and release file field. See Table 18.


Table 18: Select Release Files Manually Parameters

Parameter	Description
Release Directory	Directory path from the FTP root directory containing the software releases; combined with the filename and the subdirectory, it must not exceed 255 characters
Release File	Name of software release to be downloaded to the selected device; combined with the release directory and the subdirectory, it must not exceed 255 characters

2. Click OK.

The information is displayed in the Download Software dialog box.

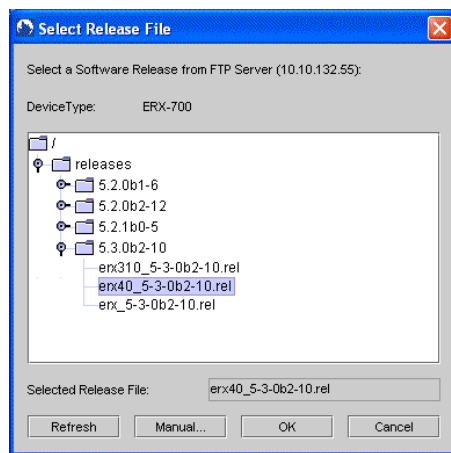
Device Workshop Related Dialog Boxes

Select Release File The Select Release File dialog box appears when you click  to the right of the Software Release field in the Download Software dialog box. Use it to select the software release file you want to download to the selected device.

Only release files and folders containing release files are displayed.



NOTE: Depending on the size of the software release repository, there may be a delay in listing the directories.



1. Click the folder that contains the software release you want to download.
2. Select the desired software release file.
3. Click OK.

The information is displayed in the Download Software dialog box.

Select Release Files Manually The Select Release File Manually dialog box appears when you click Manual in the Select Release File dialog box. Use it to manually enter the release directory and release file field.

1. Enter the release directory and release file field. See Table 19.

Table 19: Select Release File Manually Parameters

Parameter	Description
Release Directory	Directory path from the FTP root directory containing the software releases; combined with the filename and the subdirectory, it must not exceed 255 characters
Release File	Name of software release to be downloaded to the selected device; combined with the release directory and the subdirectory, it must not exceed 255 characters

2. Click OK.

The information is displayed in the Download Software dialog box.

