

## Chapter 4

# NMC-RX Application Tour

This chapter provides a brief tour of the NMC-RX application.

Topic	Page
Overview	41
Before You Begin	41
Task 1. Create Groups	42
Task 2. Add a Device	45
Task 3. Launch the Device Workshop	46
Task 4. Create a Customer	47
Task 5. Configure an Object	50

### Overview

---

This tour will familiarize you with some of the more common tasks you perform using the NMC-RX software. In this tour, you will:

1. Create one group and two subgroups.
2. Add a device.
3. Launch the Device Workshop.
4. Create a customer.
5. Configure an object.

### Before You Begin

---

Be sure you have started the NMC-RX application. If you need information about installing and running the software, see *Chapter 2, Installing and Running the NMC-RX Application*.

## Task 1. Create Groups

---

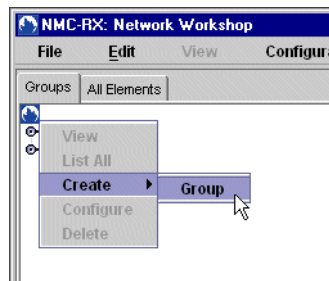
Within the NMC-RX application, *groups* represent a flexible hierarchy for organizing network elements. In this section, you will create a top-level group and name it *New England*. Then you will create two subgroups and name them *Massachusetts* and *New Hampshire*.

### Create a Top-Level Group

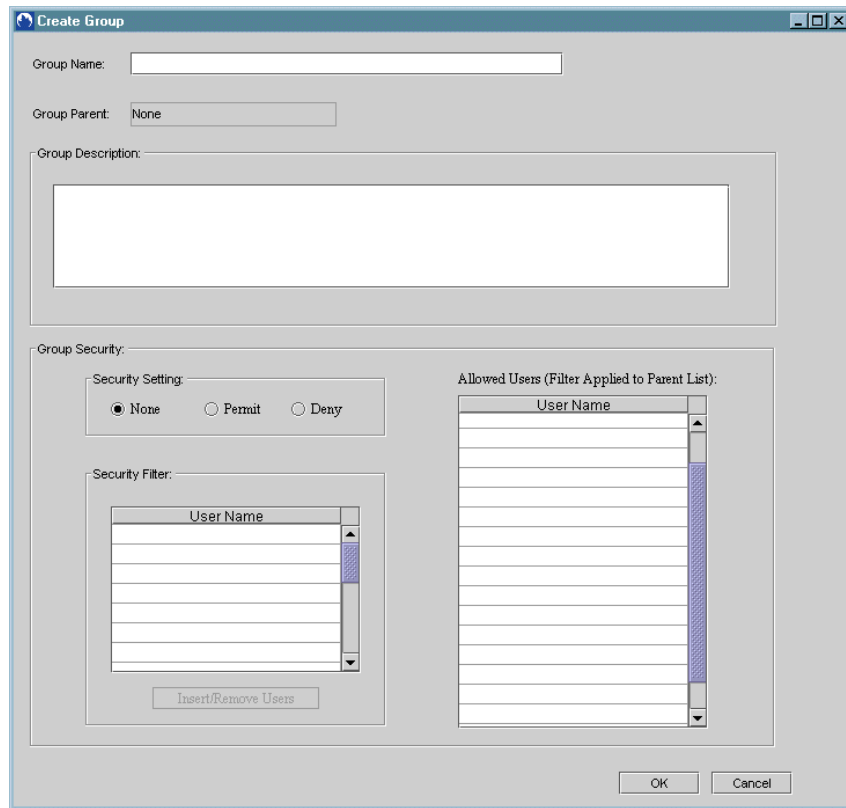
Begin this procedure from the Network Workshop.

To create a top-level group:

1. Click the NMC-RX icon, right-click, select Create, and click Group.



The Create Group dialog box appears.



- Enter the following information in the Create Group dialog box:

Group Name: **New England**

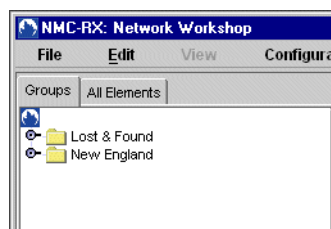
Group Description: **New England is the top-level group.**



**NOTE:** Use the Group Description text box to include additional information about the group. The information appears whenever the group is accessed. You can change or delete the note at any time.

- Click OK.

The group's name and folder icon appear in the context area in the Network Workshop.



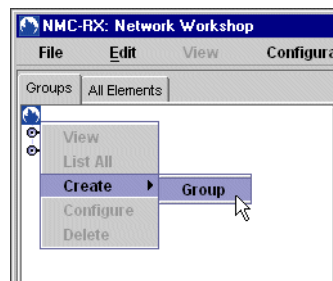
You have just finished creating a top-level group called New England. Next you will create two subgroups.

## Create Subgroups

Begin this procedure from the Network Workshop.

To create a subgroup:

1. Select the New England folder that you just created.
2. Right-click, select Create, and click Group.



The Create Group dialog box appears.

3. Enter the following in the Create Group dialog box:

Group Name: *Massachusetts*

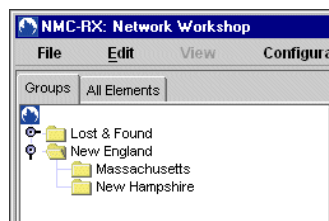
Group Description: *Massachusetts is a subgr oup.*

4. Click OK.

The new group's name and icon appear in the list in the context area.

5. Repeat Steps 1–4 to create a *New Hampshire* group.

Each group's name and icon appear in the context area in the Network Workshop.



## Task 2. Add a Device

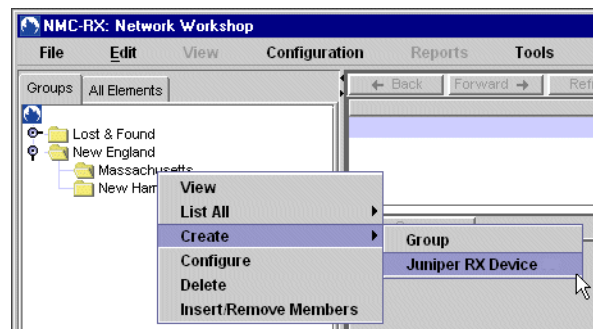
Within the NMC-RX application, *devices* represent E-series devices. You view devices as part of your network's hierarchy. In this section, you will add a device to the Massachusetts group and set basic identification parameters.



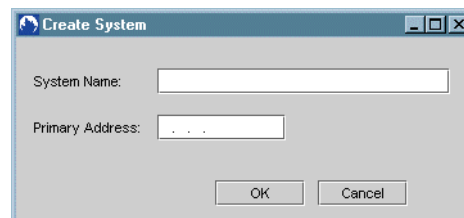
**NOTE:** Before you begin, you will need a valid IP address for a device on your network.

To add a device:

1. Select the Massachusetts group.
2. Right-click, select Create, and click Juniper RX Device.



The Create System dialog box appears.



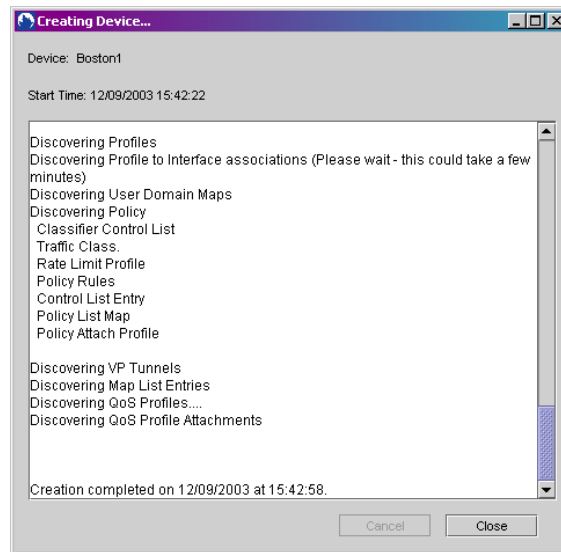
3. Enter the following information:

System Name: **Boston1**

Primary Address: *(Enter the IP address of a device on your network.)*

4. Click OK.

The Creating Device window appears and automapping of the device begins.



Depending on the device configuration, this process may take a few moments. After automapping the device, NMC-RX adds it to the Massachusetts group in the Network Workshop.



**NOTE:** Once NMC-RX begins to automap the device, closing the Creating Device window or cancelling the procedure results in a confirmation dialog box.

5. Close the Creating Device dialog box.

NMC-RX acknowledges the creation of the Juniper RX device.

6. Click OK.

The new device appears immediately in the listing in the Network Workshop context area.

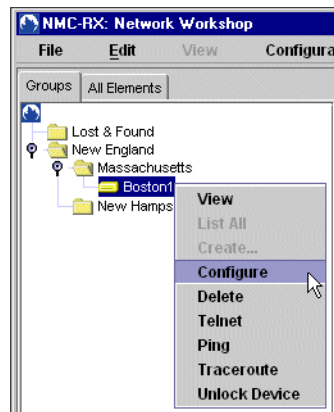
### Task 3. Launch the Device Workshop

You can now configure your device by viewing it in the Device Workshop.

There are two ways to display the device in the Device Workshop:

In the Network Workshop, double-click the E-series device that you want to configure. The Device Workshop for the selected device appears (Figure 10).

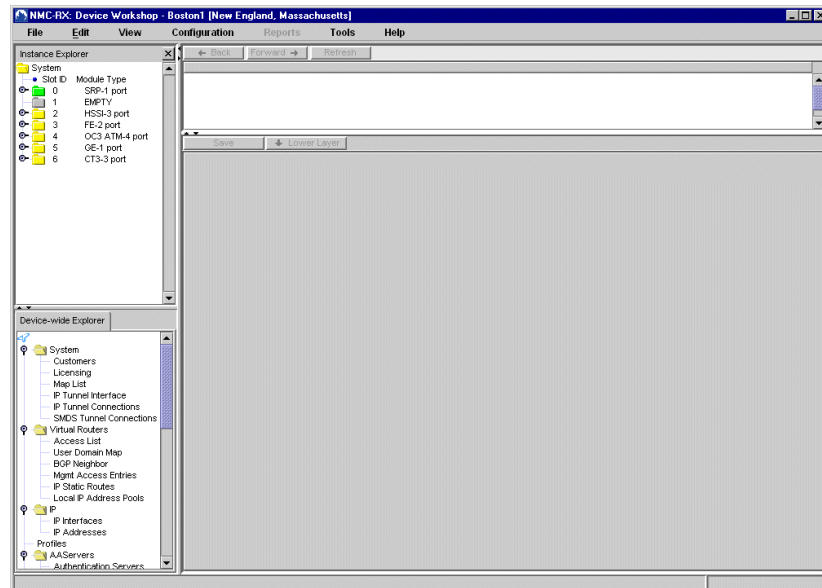
In the Network Workshop, select the E-series device that you created, right-click, and click Configure.



The Device Workshop for the selected device appears (Figure 10).

All modules present on the device are listed in the Instance Explorer in the Device Workshop.

**Figure 10: Device Workshop**

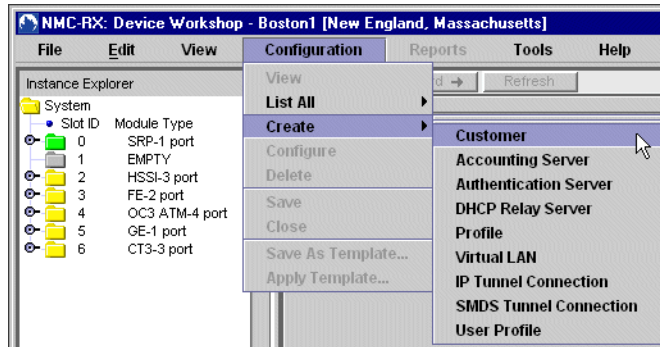


## Task 4. Create a Customer

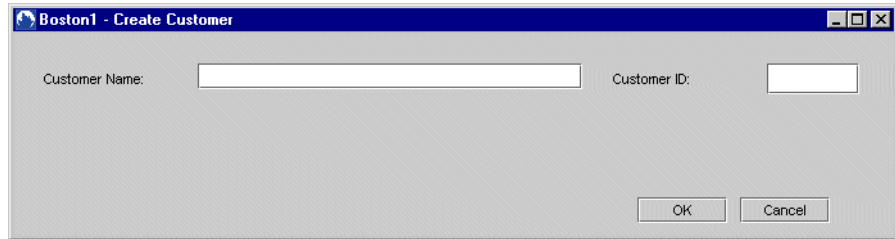
Within the NMC-RX application, you can create customers. In this section, you will create a customer and set its basic identification parameters.

To create a customer:

1. In the Device Workshop, on the Configuration menu, select Create, and click Customer.



The Create Customer dialog box appears.



2. Enter the following information:

Customer Name: **AcmeTex**

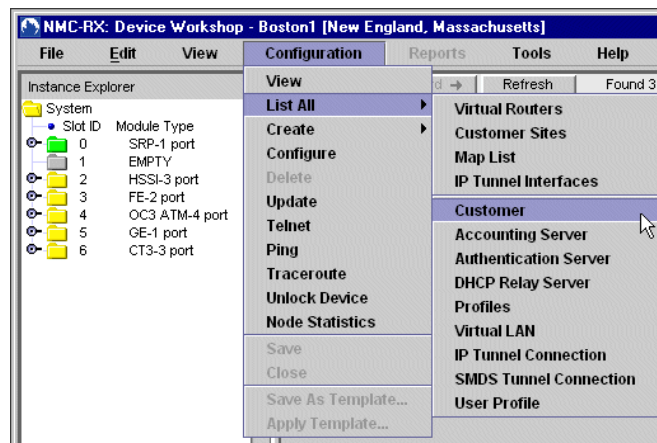
Customer ID: **500800** (only numeric characters are allowed)

3. Click OK.
4. Create two additional customers by repeating Steps 1–3.

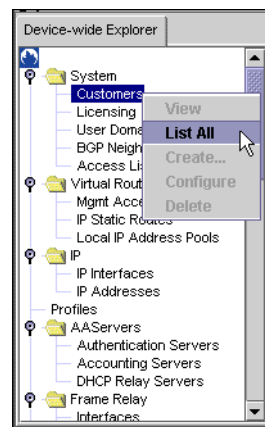
## View Customers

To view all customers:

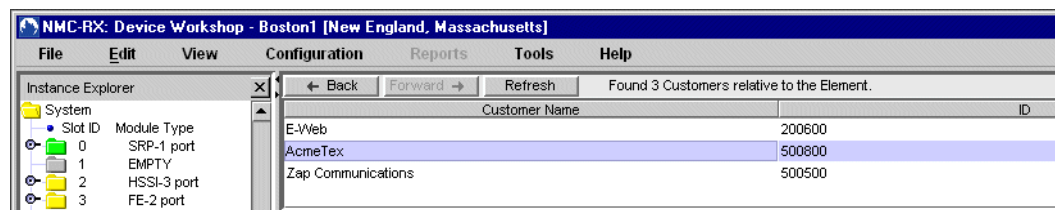
1. In the Device Workshop, on the Configuration menu, select List All, and click Customer.



You can also select Customers in the Device-wide Explorer, right-click, and click List All.



The customer *AcmeTex* and the other customers you created appear in the list area.



2. Click the Customer Name column heading to sort the list.
3. Click the column heading again to reverse the sort order.

To learn more about working with customers, see *Chapter 7, Configuring Customers*.

## Task 5. Configure an Object

You can easily configure objects by using the Instance Explorer in conjunction with the Device-wide Explorer. Within the NMC-RX application, you will use these tools to perform your configuration tasks.

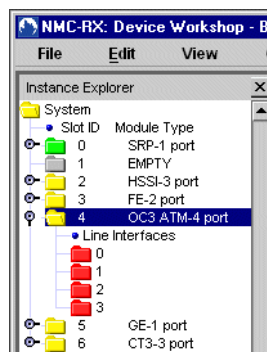


**NOTE:** The purpose of this section is to highlight the steps usually followed to configure any line module. This section assumes that you have an ATM line module in your device with no configured interfaces. If you do not have an ATM line module, use an available line module.

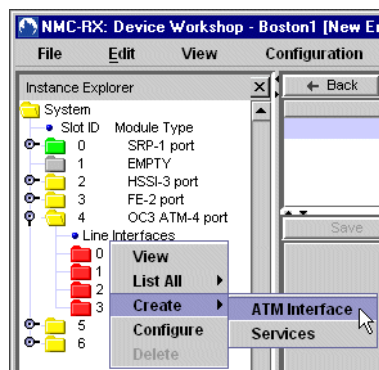
### Create an ATM Interface

To create an ATM interface on an ATM module:

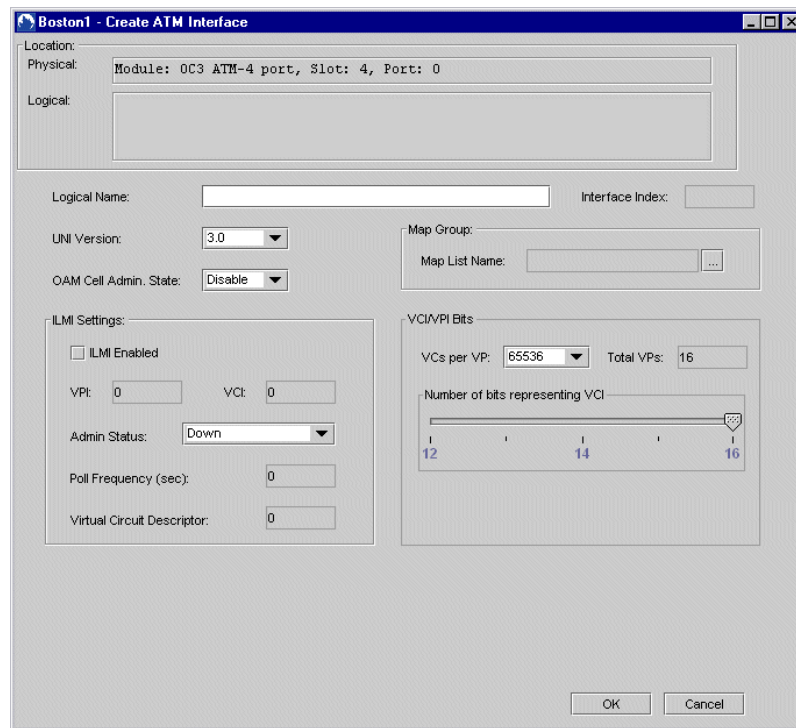
1. Navigate to the ATM module, and double-click the folder to open it.



2. Click line interface 0, right-click, select Create, and click ATM Interface.

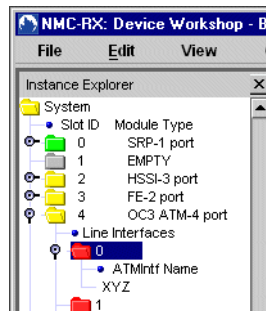


The Create ATM Interface dialog box appears.



3. Enter XYZ in the Logical Name field, and then click OK.

The XYZ ATM interface is added to the hierarchy.

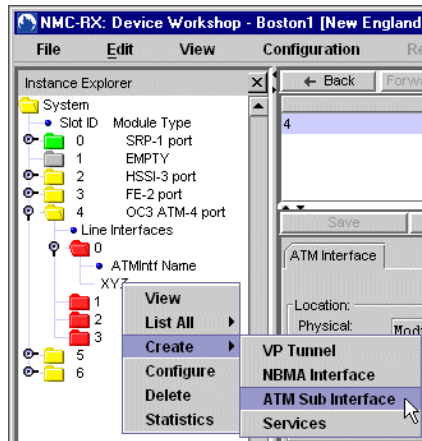


**NOTE:** You can create only one ATM interface per line interface.

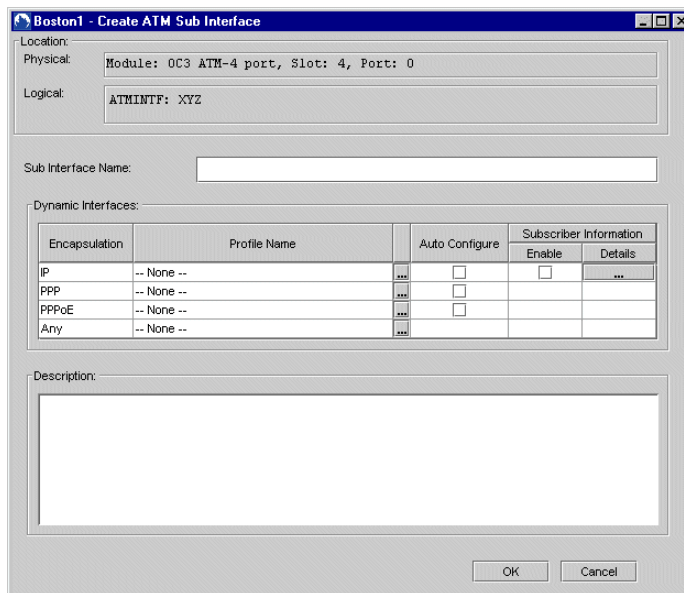
### Create a Subinterface

To create an ATM subinterface on an ATM interface:

1. Click the interface you just created in the previous section (XYZ).
2. Right-click, select Create, and click ATM Sub Interface.

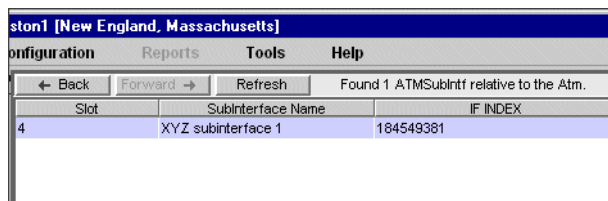


The Create ATM Sub Interface dialog box appears.



- Enter *XYZ subinterface 1* in the Subinterface Name field and click OK.

The ATM subinterface appears in the list area.



### ***View the ATM Interface***

To view the ATM interfaces that you just created:

1. In the Device-wide Explorer, under ATM, select Interfaces.
2. Right-click, and then click List All.

The ATM interface you created appears in the list area.

3. Select Subinterfaces, right-click, and click List All.

The ATM subinterface you created appears in the list area.

Learn more about ATM in *Chapter 17, Configuring A TM*.

