

# Configuring CBF Interfaces

# 19

Connection-based forwarding (CBF) interfaces are created automatically when you create a Switched Multimegabit Data Service (SMDS) tunnel connection. However, you can also create a CBF interface individually. This chapter presents the procedure for doing so.

Topic	Page
Overview	19-1
References	19-2
Creating CBF Interfaces	19-2

## Overview

---

CBF uses dedicated layer 2 interfaces, called CBF interfaces, that are configured at the top of interface columns for SMDS tunnel connections. CBF interfaces used in connection-based forwarding are analogous to IP interfaces used in IP routing.

A CBF interface runs over an SMDS trunk interface. Only one CBF interface is permitted per SMDS interface. The CBF interface forwards SMDS traffic among SMDS trunk interfaces.

CBF provides a simple mechanism for forwarding non-IP traffic directly between E-series devices. It is a method of forwarding frames in which forwarding decisions are made using only the identity of the ingress interface. In particular, no part of a packet's contents is used to determine how a packet should be forwarded.

CBF forwards frames along connections configured between pairs of interfaces. Frames received on a connection's ingress interface are forwarded directly to that connection's egress interface. The packet is

transmitted from ingress to egress forwarding interfaces as the raw layer 2 payload received from the layer 2 interface. Both the ingress and egress interfaces are SMDS-encapsulated and have CBF interfaces associated with them. Once the connection between the ingress and egress interfaces is made, traffic begins to flow.

## References

---

See the following related chapters for additional information:

- *Chapter 20, Configuring CBF Interface Connections*
- *Chapter 27, Configuring SMDS Interfaces*
- *NMC-RX User Guide, Vol. 2, Chapter 9, Configuring IP Tunnel Interfaces*
- *NMC-RX User Guide, Vol. 2, Chapter 10, Configuring Tunnel Connections*

## Creating CBF Interfaces

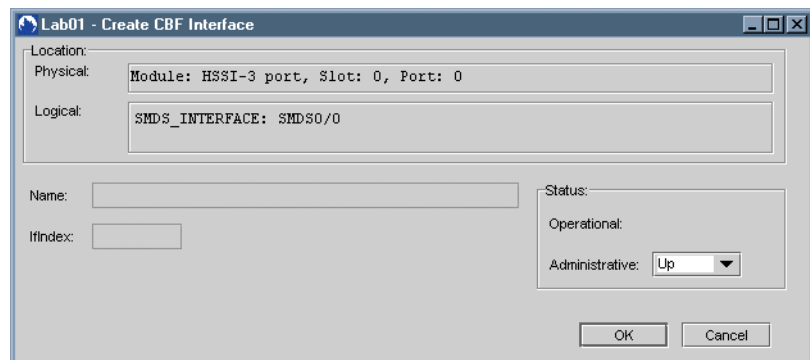
---

When you create an SMDS tunnel connection, CBF interfaces are created automatically, but you can also create these interfaces individually.

To create a CBF interface:

- 1 In the Instance Explorer, select an SMDS interface.
- 2 Right-click, select Create, and click CBF Interface.

The Create CBF Interface dialog box appears.



The CBF interface parameters described in Table 19-1 are generated automatically.

**Table 19-1** CBF interface parameters

Parameter	Description
Name	Identifies the interface; generated automatically
IfIndex	Identifies the interface on the particular line interface; generated automatically
Operational	Current operational status of the interface
Administrative	Desired status of the interface: Up/Down; default: Up

3 Click OK.

The Creation complete dialog box appears.



4 Click OK.

