

10

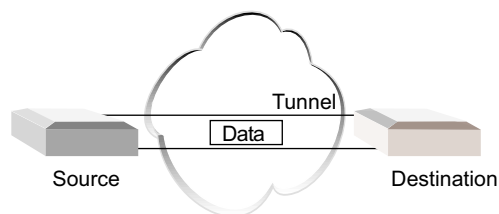
Configuring Tunnel Connections

This chapter discusses the procedures for creating tunnel connections.

Topic	Page
Overview	10-1
References	10-4
Creating IP Tunnel Connections	10-4
Creating SMDS Tunnel Connections	10-9
Analysis	10-13

Overview

Tunnels provide a way of transporting datagrams between routers separated by networks that do not support all the protocols that those routers support. The following figure illustrates a tunnel's basic components.

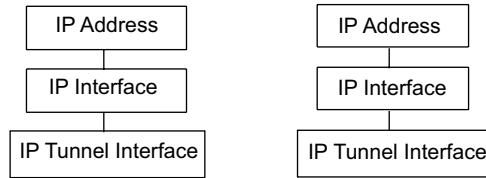


The NMC-RX application supports IP tunnel connections and SMDS tunnel connections. This chapter discusses both types of connections.

IP Tunnels

The RX system supports static IP tunnels. An IP tunnel is a virtual point-to-point connection between two routers.

To establish an IP tunnel, you specify an IP tunnel type and name, and then specify an interface on each router to act as endpoints for the tunnel. See the following illustration for the components that make up the interface columns for an IP tunnel.



The RX system supports the following IP tunnel types:

- Generic routing encapsulation (GRE)
- Distance Vector Multicast Routing Protocol (DVMRP)



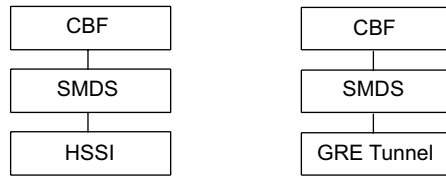
Note: Currently, the RX system tunnels only IP packets.

SMDS Tunnels

The RX system supports SMDS tunnels. The following components support the SMDS application:

- HSSI line module – provides the physical interface to connect to the SMDS switch
- GRE tunnels – transport SMDS traffic among ERX systems
- SMDS trunk interface – runs over the HSSI line module and GRE tunnels
- Connection-based forwarding (CBF) interface – forwards SMDS traffic among SMDS trunk interfaces

The following illustration shows how these components make up the interface columns for the SMDS application.



Two sets of interfaces are required for SMDS:

- The first set provides the connection between the ERX system and the SMDS switch. It has a physical HSSI line module on which you configure an SMDS trunk interface and a CBF interface.
- The second set provides the connection between ERX systems. It has a GRE tunnel, an SMDS trunk interface, and a CBF interface.

HSSI

The HSSI line module supports the SMDS trunk interface. This connection supports speeds of 34.368 or 44.736 Mbps.

GRE Tunnels

All SMDS traffic received on a HSSI must be mapped one-to-one with a specific GRE tunnel.

Line Modules

To create tunnels, you must install a Tunnel Service module in the ERX device. This module receives data from the ingress port and transmits data to other line modules from egress ports. You must assign IP tunnel interfaces to act as destination endpoints for the tunnel.

All line modules forward traffic to tunnels. The following line modules and their corresponding I/O modules accept traffic for tunnels:

- CE1
- cOCx/STMx
- CT1
- CT3
- E3 ATM and FRAME
- FE-2

- GE/FE
- OC3 (dual port)
- OCx/STMx ATM and POS
- T3 ATM and FRAME

References

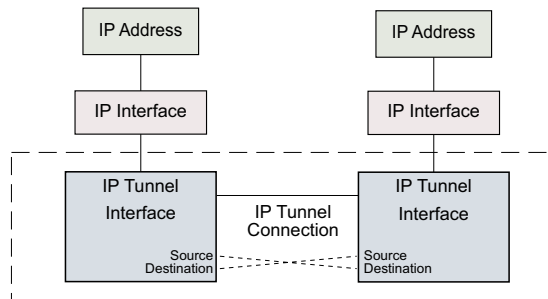
See the following chapters for related information:

- *NMC-RX User Guide, Vol. 1, Chapter 19, Configuring CBF Interfaces*
- *NMC-RX User Guide, Vol. 1, Chapter 27, Configuring SMDS Interfaces*
- *Chapter 9, Configuring IP Tunnel Interfaces*

Creating IP Tunnel Connections

An IP tunnel connection is a network-level object that links two mirrored IP tunnel interfaces (referred to in this chapter as endpoint A and endpoint B).

The following illustration shows the IP tunnel connection components.

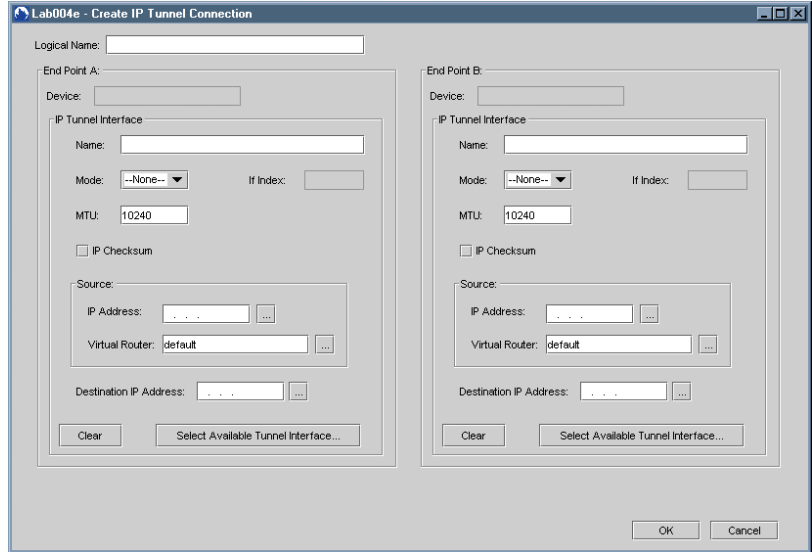


The two tunnel interfaces must identify a locally configured IP address as the source IP address and another IP address as the destination IP address. The source IP address of one IP tunnel interface is the destination IP address of the other IP tunnel interface, and vice versa.

To create an IP tunnel connection:

- 1 From the Configuration menu, select Create, and click IP Tunnel Connection.

The Create IP Tunnel Connection dialog box appears.



- 2 Type a logical name for the IP tunnel connection in the text box. See Table 10-1.
- 3 Create the tunnel endpoints in either of the following ways:
 - Create a *new* IP tunnel interface for each endpoint by setting the parameters in each endpoint's group box. See *Creating IP Tunnel Endpoints* below.
 - Select an *existing* tunnel interface by clicking the Select Available Tunnel Interface button in the IP Tunnel Interface group box. See *Selecting Available IP Tunnel Interfaces* below.
- 4 When you finish configuring each endpoint, click OK in the Create IP Tunnel Connection dialog box.

The NMC-RX application creates an IP tunnel connection.



Note: The Clear button in the IP Tunnel Interface group box allows you to reset the parameters to their default values.




Creating IP Tunnel Endpoints

This section describes creating the endpoints in an IP tunnel connection. You can also create the IP tunnel interfaces individually and then associate them as endpoints in a tunnel connection. See *Chapter 9, Configuring IP Tunnel Interfaces*.

To create the tunnel endpoints:

- 1 Set the parameters. See Table 10-1.

Table 10-1 IP tunnel connection parameters

Parameter	Description
Logical Name	Name for the IP tunnel connection; maximum of 80 characters
Device	Device identifier. This field is automatically populated.
Name	Name for the IP tunnel interface; 1–80 characters, no spaces
Mode	IP tunnel mode for an IP tunnel: GRE or DVMRP. You must choose one or the other.
MTU	Maximum transmission unit setting for the IP tunnel interface; range: 1024–10240; default: 10240. To ensure effective function, the MTU value should be the same for both endpoints.
IP Checksum	Checking this box enables end-to-end check summing and causes the system to drop packets with bad checksums received on this interface. Range: enable/disable. Default: disable. This feature is disabled for DVMRP mode.
Source: IP Address	Source IP address for the IP tunnel interface. Enter a valid address, or click  to search for and select an IP address (see <i>IP Tunnel Connections Related Dialog Boxes</i>).
Source: Virtual Router	The transport router associated with the source IP tunnel interface. You cannot edit this parameter once you create the tunnel interface. Once you choose a virtual router, you cannot change it. Enter a virtual router name, or click  to search for and select a virtual router (see <i>IP Tunnel Connections Related Dialog Boxes</i>).
Destination IP Address	Destination IP address for the tunnel interface. Enter a valid address, or click  to search for and select an IP address (see <i>IP Tunnel Connections Related Dialog Boxes</i>).

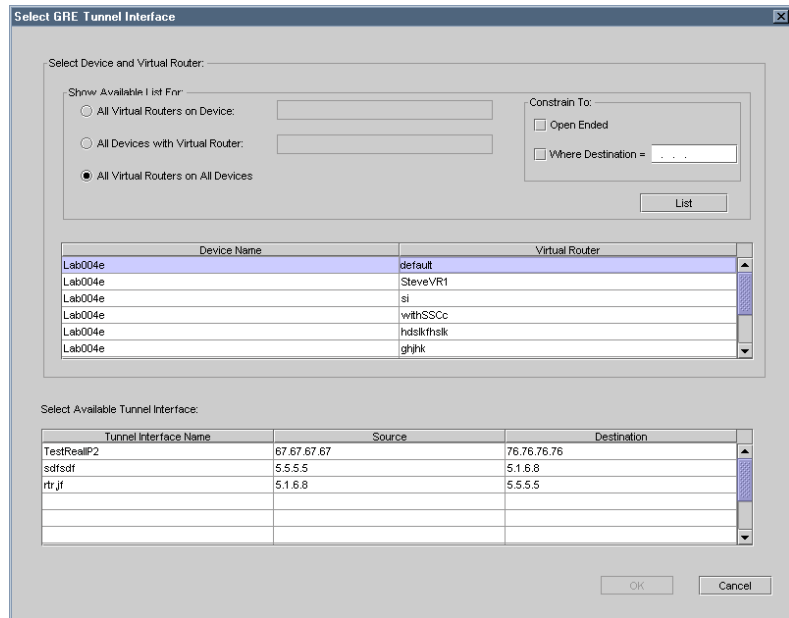


Note: To select existing IP tunnel interfaces, click the *Select Available Tunnel Interface* button in the IP (or SMDS) Tunnel Interface group box.

- 2 Follow the instructions in *Chapter 9, Configuring IP Tunnel Interfaces*, for creating each endpoint.

Selecting Available IP Tunnel Interfaces

The Select GRE (or DVMRP) Tunnel Interface dialog box appears when you click the Select Available Tunnel Interface button in the IP (or GRE) Tunnel Interface group box.



- 1 In the Show Available List For group box, select an option.

The Show Available List filters help you to pare down the list of IP tunnel interfaces to those specifying a specific virtual router on a specific device. The filters provide the following options:

- All Virtual Routers on Device – If you choose this option, you need to enter the name of the device in the text box.
- All Devices with Virtual Router – If you choose this option, you need to enter the name of the virtual router in the text box.
- All Virtual Routers on all Devices – You need only to select this option.

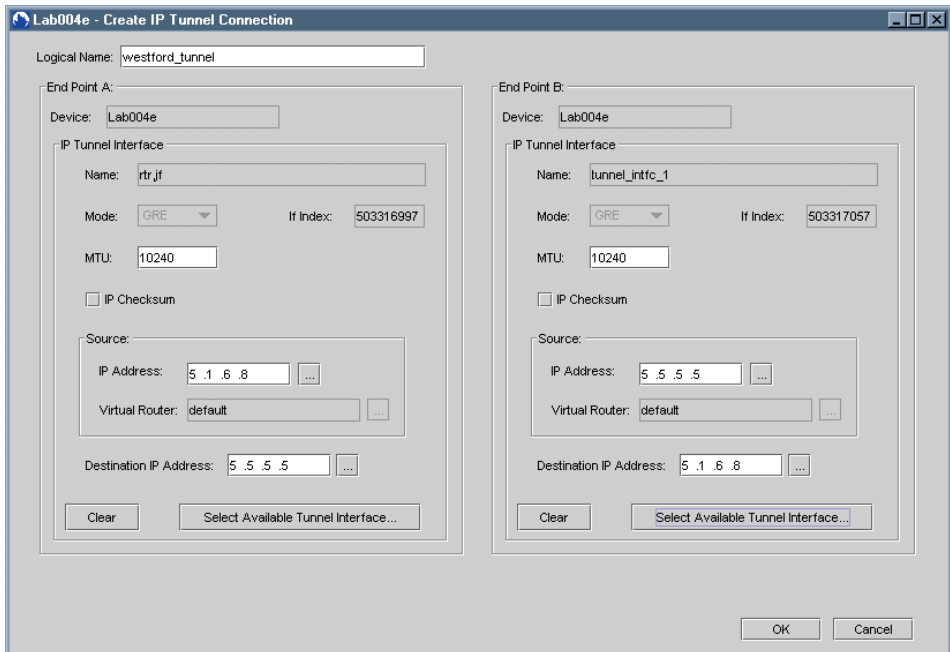


Note: You can use a wildcard format for the names of devices and virtual routers; for example, Lab* or *RX.

- 2 In the Constrain To group box, select an option:

- Open Ended – Only those tunnel interfaces that are not already part of a tunnel connection are displayed.

- Where Destination = – Only those IP tunnel interfaces whose destination address equals the IP address that you enter are displayed.
- 3 Click List.
The filtered list of device names and virtual routers appears.
 - 4 Select the virtual router you want.
The list of tunnel interfaces for the virtual router you selected appears with each interface's source and destination IP address
 - 5 Select the tunnel interface you want, and click OK.
The settings for the endpoint's tunnel interface appear in the Create IP (or SMDS) Tunnel Connection dialog box, as shown in the following dialog box.



Related Dialog Boxes

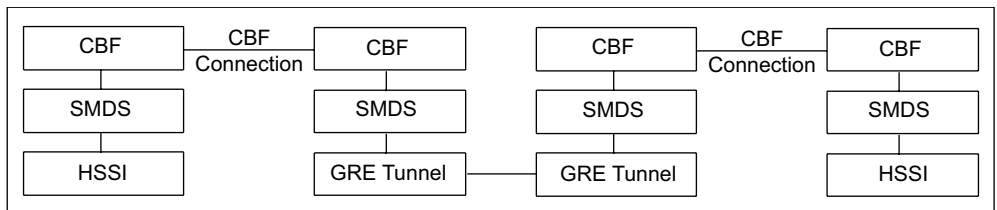
The Select IP Address and Associate Virtual Router dialog boxes for the two IP tunnel connection endpoints are the same as those for individual IP tunnel interfaces, with one difference.

The only difference between the related dialog boxes is that the Select IP Address dialog box for IP tunnel interfaces has only one filter option, whereas in the context of IP tunnel connections the same dialog box allows you to use three filter options. See the *Related Dialog Boxes* section in *Chapter 9, Configuring IP Tunnel Interfaces*.

Creating SMDS Tunnel Connections

An SMDS tunnel connection is a network-level object that links two mirrored GRE tunnel interfaces.

The following illustration shows the SMDS tunnel connection components.

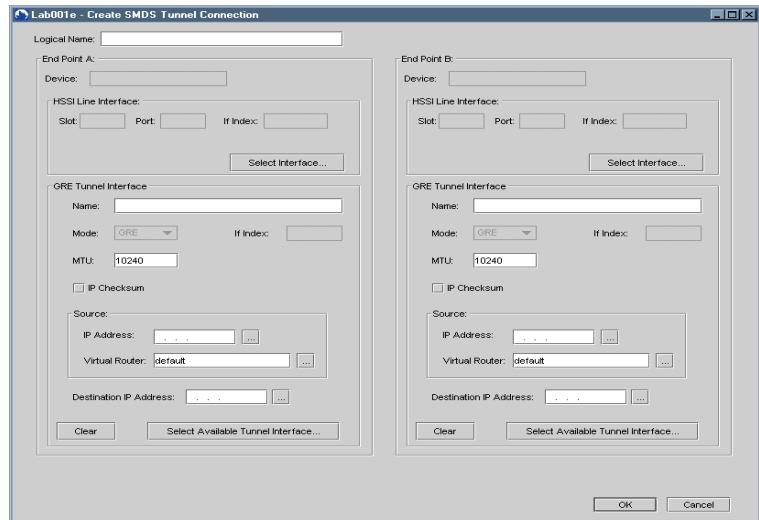


The two tunnel interfaces must identify a locally configured IP address as the source IP address and another IP address as the destination IP address. The source IP address of one GRE tunnel interface is the destination IP address of the other GRE tunnel interface, and vice versa.

To create an SMDS tunnel connection:

- 1 From the Configuration menu, select Create, and click SMDS Tunnel Connection.

The Create SMDS Tunnel Connection dialog box appears.



- 2 Type a logical name for the SMDS tunnel connection in the text box. See Table 10-2.
- 3 Create the tunnel endpoints in either of the following ways:
 - Create a *new* GRE tunnel interface for each endpoint by setting the parameters in each endpoint's group box. See *Creating SMDS Tunnel Endpoints* below.
 - Select an *existing* tunnel interface by clicking the Select Available Tunnel Interface button in the IP Tunnel Interface group box. See *Selecting Available IP Tunnel Interfaces* earlier in this chapter.
- 4 When you finish configuring each endpoint, click OK in the Create SMDS Tunnel Connection dialog box.

The NMC-RX application creates a GRE tunnel connection.



Note: The Clear button in the GRE Tunnel Interface group box allows you to reset the parameters to their default values.

Creating SMDS Tunnel Endpoints

This section describes creating the endpoints in an SMDS tunnel connection.

To create the tunnel endpoints:

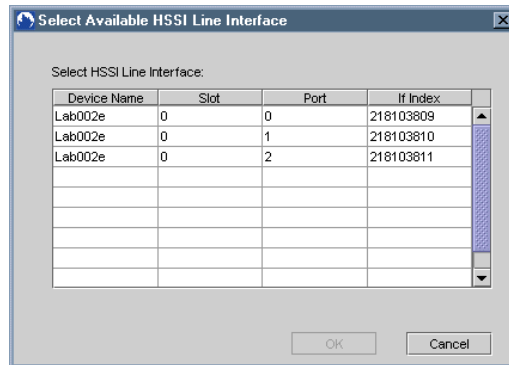
- 1 Set the parameters. See Table 10-2.

Table 10-2 SMDS tunnel connection parameters

Parameter	Description
Logical Name	Name for the SMDS tunnel connection; maximum of 80 characters
Device	Device identifier. This field is automatically set.
HSSI Line Interface	
Slot	Slot of the physical interface to connect to the SMDS switch; default: blank
Port	Port of the physical interface to connect to the SMDS switch
IF Index	This field is blank when you create an object and is automatically populated with the If Index identifier when you configure the object; uneditable
GRE Tunnel Interface	
Name	Name for the GRE tunnel interface; 1–80 characters
Mode	IP tunnel mode for an SMDS tunnel connection; must be GRE; therefore, this field is preselected and disabled; default: GRE
If Index	This field is blank when you create an object and is automatically populated with the If Index identifier when you configure the object; uneditable
MTU	Maximum transmission unit setting for the GRE tunnel interface; range: 1024–10240; default: 10240. To ensure effective function, the MTU value should be the same for both endpoints. Note: The SMDS interface supports a maximum value of 9188.
IP Checksum	Checking this box enables end-to-end check summing and causes the system to drop packets with bad checksums received on this interface. Range: enable/disable. Default: disable.
Source: IP Address	Source IP address for the GRE tunnel interface
Source: Virtual Router	Transport router associated with the source IP tunnel interface. Once you have created the tunnel interface, you cannot change this parameter.
Destination IP Address	Destination IP address for the GRE tunnel interface

- 2 Select the HSSI line interface.

To do this, in the HSSI Line Interface group box, click Select Interface. The Select Available HSSI Line Interface dialog box appears. When you select a line interface, the HSSI parameters are populated: Slot, Port, and If Index.



Note: A HSSI that is not listed may already be associated with an existing tunnel interface. You may select all the interfaces (HSSI through IP tunnel) for the entire endpoint by clicking the Select Available Tunnel Interface button in the GRE Tunnel Interface frame.

Selecting Available GRE Tunnel Interfaces

The Select GRE Tunnel Interface dialog box appears when you click the Select Available Tunnel Interface button in the GRE Tunnel Interface group box. See *Selecting Available IP Tunnel Interfaces* earlier in this chapter. The information and procedures are the same for both IP tunnel interfaces and GRE tunnel interfaces.

Create SMDS Tunnel Connection–Related Dialog Boxes

These dialog boxes are used to configure the source IP address and virtual router and the destination IP address for the endpoint. They work the same for both IP tunnel interfaces and GRE tunnel interfaces. See the *Related Dialog Boxes* section in the *Configuring IP Tunnel Interfaces* chapter.

Analysis

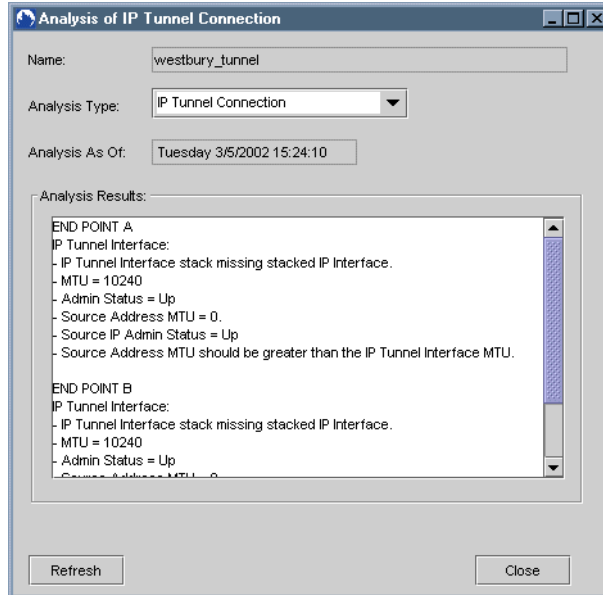
You can receive an analysis of your IP or SMDS tunnel connection's operation.

To receive an analysis:

- 1 From the Configuration menu, select Analysis.

An Analysis dialog box appears. The following dialog box is an example of the information you will receive about the IP tunnel connection. You will receive similar information about an SMDS tunnel connection.

This dialog box displays information on an IP tunnel connection that has no conflict.

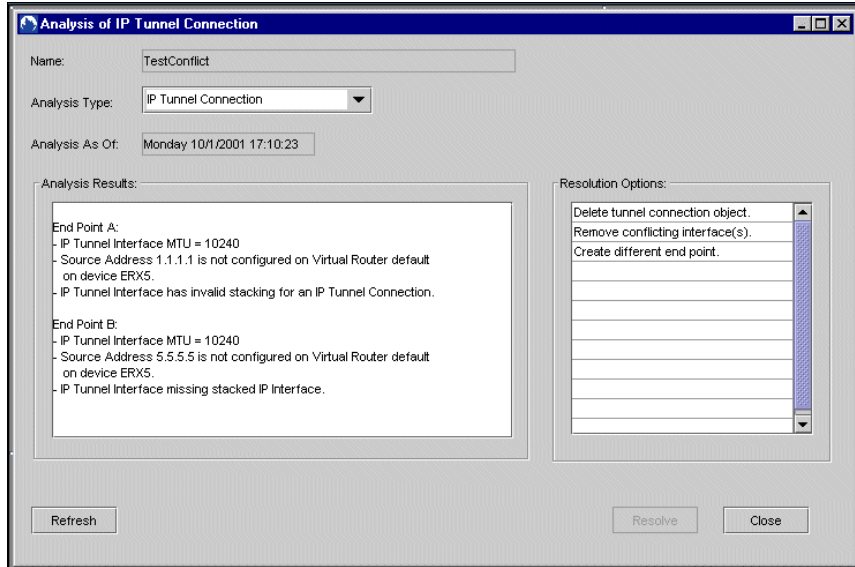


- 2 Click Refresh to update the information displayed.

The information provided in the Analysis dialog box will aid you in resolving any operational problems related to the IP tunnel connection.

Conflicts

Because interfaces can be changed through the CLI and the NMC-RX application, the IP tunnel connection could get into a conflicting state. To be specific, interfaces could be removed, and then an IP interface could be stacked on the IP tunnel interface. If the tunnel connection becomes a conflicting type, the following version of the Analysis dialog box is displayed to allow you to resolve the conflict.



The Resolution Options frame identifies possible solutions to the conflict.