

Configuring SMDS Interfaces

27

Switched Multimegabit Data Service (SMDS) interfaces are created automatically when you create an SMDS tunnel connection. However, you can also create SMDS interfaces individually. The NMC-RX application supports SMDS on the following interfaces:

- HSSI line interfaces
- IP tunnel interfaces

Topic	Page
Overview	27-1
References	27-2
Creating an SMDS Interface on a HSSI Line Interface	27-2
Creating an SMDS Interface on an IP Tunnel Interface	27-3

Overview

The SMDS trunk interface supports SMDS framed in standard HDLC. This interface is like other layer 2 interfaces, such as PPP, Frame Relay, and ATM, with the exception that the system does not de-encapsulate the packet and route the traffic as it does for the other layer 2 interfaces.

A HSSI physical interface maps one-to-one with an SMDS logical interface. The data received on an SMDS interface is forwarded to the destination interface in the ERX device, which has an associated GRE tunnel interface defined. If a CBF interface does not exist for the SMDS interface, all received traffic is dropped. In addition, the connection must be to another HSSI or to a GRE tunneled interface and never to a purely routed interface.

The SMDS trunk interface supports only connection-based forwarding (CBF) to another SMDS trunk-encapsulated interface; that is, to a GRE tunnel.

References

See the following related chapters for additional information:

- *Chapter 19, Configuring CBF Interfaces*
- *Chapter 20, Configuring CBF Interface Connections*
- *NMC-RX User Guide, Vol. 2, Chapter 9, Configuring IP Tunnel Interfaces*
- *NMC-RX User Guide, Vol. 2, Chapter 10, Configuring Tunnel Connections*

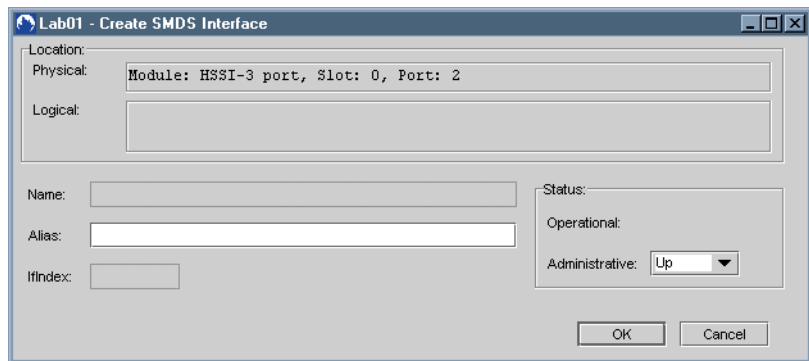
Creating an SMDS Interface on a HSSI Line Interface

You can create SMDS interfaces on a HSSI line interface.

To create an individual SMDS interface:

- 1 Open the HSSI module folder.
- 2 Select the HSSI line interface on which you want to create the SMDS interface.
- 3 Right-click, select Create, and click SMDS interface.

The Create SMDS Interface dialog box appears.



- 4 Set the SMDS interface parameters described in Table 27-1.

Table 27-1 SMDS interface parameters

Parameter	Description
Name	Identifies the interface; generated automatically
Alias	Description of the interface; 0–15 characters; default blank
IfIndex	Identifies the interface on the particular line interface; generated automatically
Operational	Current operational status of the interface
Administrative	Desired status of the interface: Up/Down; default Up

- 5 Click OK.

The Creation complete dialog box appears.



- 6 Click OK.

Creating an SMDS Interface on an IP Tunnel Interface

You can create SMDS interfaces on IP tunnel interfaces.

To create an individual SMDS interface:

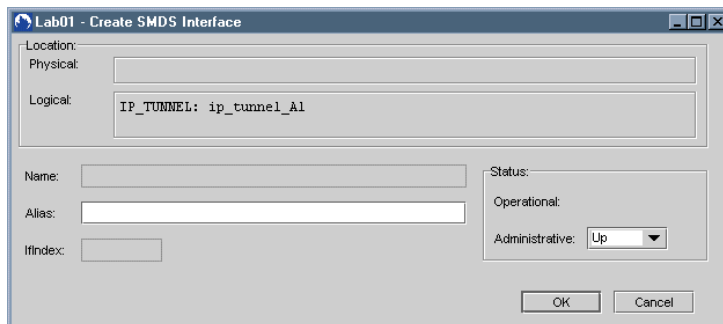
- 1 In the Instance Explorer or the Device-wide Explorer, click System.
- 2 Right-click, select List All, and click IP Tunnel Interfaces.

A list of IP tunnel interfaces appears in the list area.

Slot	Tunnel Interface Name	IF Index	Source	Mode	Device Name
N/A	ip_tunnel_interf_01	503316482	172.31.1.8	GRE	Lab001e

- 3 Select an IP tunnel interface, right-click, select Create, and click SMDS Interface.

The Create SMDS Interface dialog box appears.



See the SMDS interface parameters described in Table 27-1.

- 4 Click OK.