

Configuring ATM

16

The NMC-RX application supports Asynchronous Transfer Mode (ATM) on the following modules:

- OC3-ATM, OC12-ATM
- T3-ATM, E3-ATM

Topic	Page
Overview	16-1
References	16-2
Configuration Tasks	16-3
Creating an ATM Interface	16-3
Creating a VP Tunnel	16-7
Creating an NBMA Interface	16-8
Creating an ATM Subinterface	16-13
Creating an ATM Circuit	16-16
Pinging from an ATM Circuit	16-18
ATM Statistics	16-21

Overview

ATM is a high-speed networking technology that handles data in fixed-size units called cells. It enables high-speed communication between edge routers and core routers in an ATM network.

An ATM port can have a major interface and one or more subinterfaces. An ATM subinterface is a mechanism that allows a single physical ATM

interface to support multiple logical interfaces. Several logical interfaces can be associated with a single physical interface.

When you create an ATM 1483 subinterface, you must configure a permanent virtual circuit (PVC). Protocols such as ATM require one or more virtual circuits over which data traffic is transmitted to higher layers in the protocol stack. Some ATM features depend on the capabilities of individual line modules.

ATM CAC

You may set the optional connection admission control (CAC) parameters when creating and modifying ATM interfaces. When CAC is enabled, the NMC-RX application calculates the required bandwidth and compares it to the available bandwidth based on the most recent system update. You are warned if there is not sufficient bandwidth to honor the request. This calculation is executed when there is existing stacking and upon creation and modification of VP tunnels and ATM circuits.

NBMA Interfaces

The NMC-RX software supports nonbroadcast multiaccess (NBMA) networks on ERX devices. These types of networks interconnect more than two routers and have no broadcast capabilities.



Note: The NBMA feature is supported only on OC3-4 and OC12 line modules.

NBMA provides a nonbroadcast point-to-point connection consisting of a single IP address atop several circuits. Each circuit terminates at a different physical device. For example, you can use NBMA to connect a system to multiple stations.

You can add map lists and map list entries to the NMC-RX database and statically assign destination IP addresses to ATM circuits. You can use InARP to dynamically assign IP addresses to circuits, or you can use a combination of InARP and map lists. Map lists can be empty and may exist independently of any ATM interfaces, but have no function until they contain map list entries and are associated with an ATM interface.

References

For more detailed information, see the *ERX Link Layer Configuration Guide, Chapter 1, Configuring ATM*.

Configuration Tasks

To configure ATM objects on a module, perform the following steps:

- 1 Configure an ATM interface.
- 2 (Optional) Create a VP Tunnel.
- 3 (Optional) Create an NBMA Interface.
- 4 Configure an ATM subinterface.
- 5 Configure an ATM circuit (virtual circuit).
- 6 (Optional) Configure a VP (virtual path) tunnel.

Creating an ATM Interface

Before you attempt to create an ATM interface on your system, create the physical line interface over which ATM traffic flows. See the following chapters:

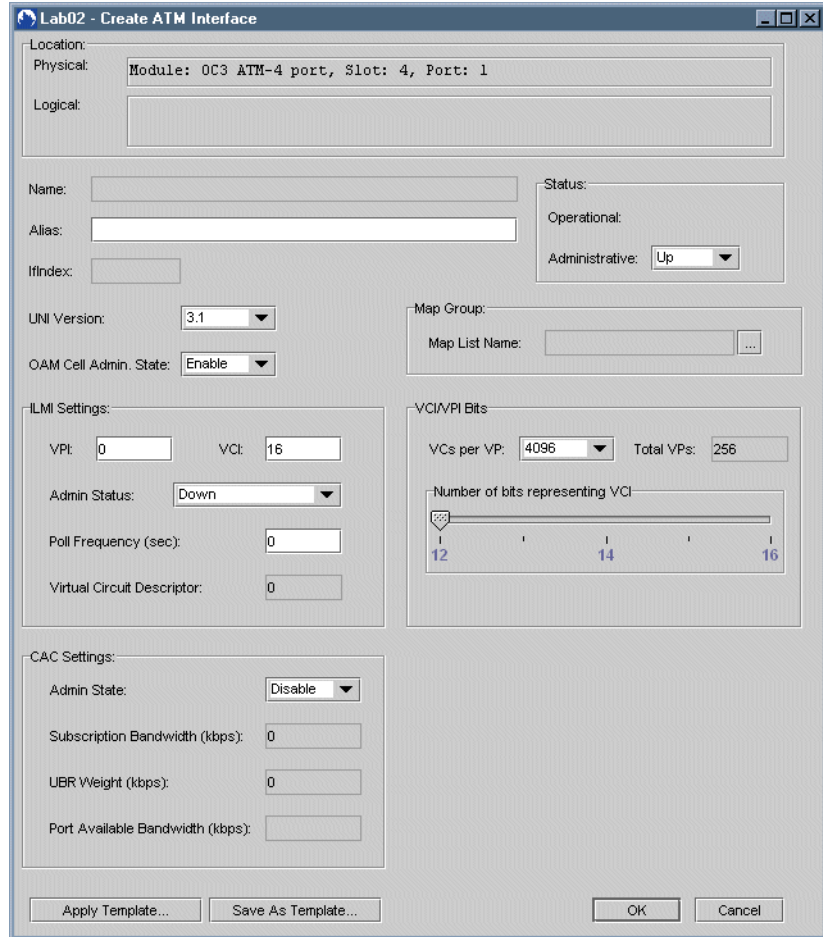
- *Chapter 10, Configuring Channelized OC Modules*
- *Chapter 11, Configuring Unchannelized OC Modules*
- *Chapter 14, Configuring T3/E3 and T1/E1 Modules*

To begin creating ATM, you must navigate to the module's line interface level to create an ATM interface for the module.

To create an ATM interface on a module:

- 1 In the Instance Explorer, select the module for which you want to create an ATM interface.
- 2 Right-click the line interface on which you want to configure ATM, select Create, and click ATM Interface.

The Create ATM Interface dialog box appears.



3 Set the ATM interface's parameters. See Table 16-1.


Table 16-1 ATM interface parameters

Parameter	Description
Name	Identifies the interface; generated automatically
Alias	Description of the interface; 0–32 characters; default blank
IfIndex	Identifies the interface on the particular line interface; generated automatically
Operational	Current operational status of the interface
Administrative	Desired status of the interface: Up/Down; default Up
UNI Version	User Network Interface. You can select the version on a per-port basis; available versions are 3.0, 3.1, and 4.0.

Table 16-1 ATM interface parameters (continued)

Parameter	Description
OAM Cell Admin. State	When enabled, the ERX system ignores all operation, administration, and maintenance (OAM) cells received on the interface; default: enabled
Map List Name	Associates a map list with the current ATM interface on OCx/STMx modules only; range 32 alphanumeric characters See <i>Creating an NBMA Interface</i> later in this chapter.
ILMI Settings	
VPI	Virtual Path Identifier for ILMI. A number ranging from zero to one lower than the value selected in the VCI/VPI Bits group box. The recommended VPI value for the ILMI PVC is 0. It must match the value on the ATM switch. Note: The VPI and VCI values cannot both be set to 0.
VCI	Virtual Circuit Identifier for ILMI. A number ranging from zero to one lower than the value selected in the VCI/VPI Bits group box. The VCI value is unique on a single link, not throughout the ATM network. The recommended VCI value for the ILMI PVC is 16. Note: The VCI and VPI values cannot both be set to 0.
Admin Status	<ul style="list-style-type: none"> • Up – interface is enabled by the administrator • Down – interface is disabled by the administrator
Poll Frequency (sec)	You can enable polling on a per-port basis. This is the interval in seconds between POLL PDU transmissions if there are no pending sequence data PDUs.
Virtual Circuit Descriptor	Identifies a virtual circuit descriptor number; range 1–4294967293 Note: The VCD value has no relationship to the VPI and VCI values. It has meaning only to the ERX system.
VCI/VPI Bits	
VCs per VP	Total number of virtual circuits per virtual paths
Total VPs	Total number of virtual paths
Number of bits representing VCI	Change the number of bits by sliding the toggle. Toggle automatically changes the VCs per VP and Total VPs fields.
CAC Settings	
Admin State	Admin status of CAC on the ATM interface Note: Selecting Enabled activates the Subscription Bandwidth and UBR Weight fields. You can enter a value in these fields or click OK/Save to have the software enter the default settings retrieved from the line module. These fields can be edited later by selecting the ATM interface, right-clicking, and selecting Configure.

Table 16-1 ATM interface parameters (continued)

Parameter	Description
Subscription Bandwidth (kbps)	<ul style="list-style-type: none"> The subscribed bandwidth of the ATM interface; range 0-2147483647 Leaving the field empty (0) makes the device calculate the available bandwidth for ATMubr and ubrPcr circuits using the effective bandwidth defined by the hardware: <ul style="list-style-type: none"> › OC3 – 149760 › T3 – 40704 › OC12 – 599040
UBR Weight (kbps)	<ul style="list-style-type: none"> The bandwidth associated with every UBR connection (that is not part of a VP Tunnel) and UBR with PCR connection configured on the ATM interface. The weight will not apply to those UBR circuits that are part of a VP Tunnel; range: 0-2147483647 Leaving the field empty (0) makes the device calculate the available bandwidth for ATMubr and ubrPcr Circuits using the effective bandwidth defined by the hardware: <ul style="list-style-type: none"> › OC3 – 149760 › T3 – 40704 › OC12 – 599040
Port Available Bandwidth (kbps)	Available bandwidth of the ATM interface as calculated by the device; not editable
QoS	
Profile Name	<ul style="list-style-type: none"> Name of the attached QoS profile (a collection of QoS commands that specify queue profiles and scheduler profiles in combination with interface types) Enabled only on OC3 ATM-4 port, OC12 ATM-1 port, T3 ATM-4 port line modules Set value by clicking  and selecting a QoS profile from the Associate QoS Profile dialog box.

4 Click OK.



Note: If there is an applicable template, you can use that template to configure the non-unique parameters for ATM. The non-unique parameters in a template are displayed in blue. See Chapter 9, Using Templates.

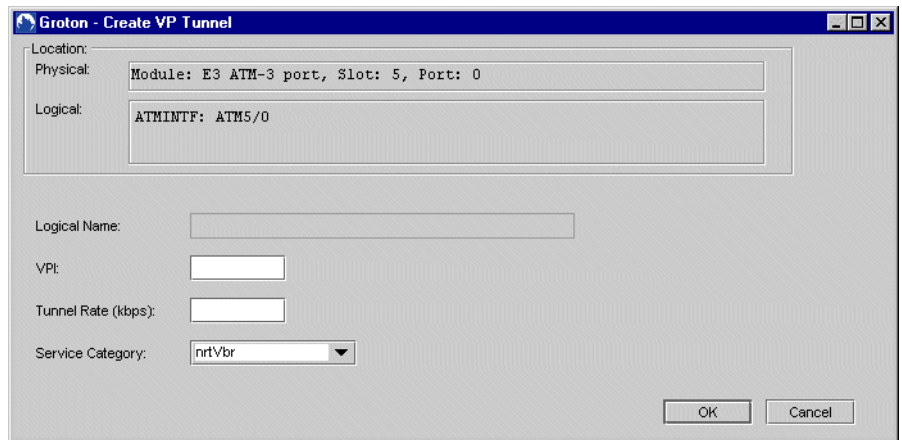
Creating a VP Tunnel

As an option, you can create VP tunnels for the ATM major interface you just created. Each tunnel can contain multiple subinterfaces and circuits.

To create a VP tunnel:

- 1 Either from the Instance Explorer or from the list area, navigate to the ATM interface for which you want to create a VP tunnel.
- 2 Right-click the ATM interface for which you want to create a VP tunnel, select Create, and click VP Tunnel.

The Create VP Tunnel dialog box appears.



- 3 Set the ATM tunnel parameters. See Table 16-2.

Table 16-2 ATM VP tunnels parameters

Parameter	Description
Logical Name	Identifies the VP tunnel
VPI	<ul style="list-style-type: none"> • Indicates which virtual path identifier (VPI) this tunnel is associated with • Number ranging from zero to one lower than the value selected in the VCI/VPI Bits group box • Number corresponds with the maximum number of VPIs. There is no default.
Tunnel Rate (kbps)	<p>Peak cell rate (PCR) of tunnel in kilobits per second. The correct number depends on the physical interface type and the framing type of the line interface.</p> <p>If CAC is enabled on this interface, the software will check if the total used bandwidth exceeds the subscription bandwidth.</p>

Table 16-2 ATM VP tunnels parameters (continued)

Parameter	Description
Service Category	Type of traffic management; nrt-VBR (non-real-time variable bit rate) is the default and only choice.

4 Click OK.

Creating an NBMA Interface

The NMC-RX software supports nonbroadcast multiaccess (NBMA) networks only on ERX OC3-4 and OC12 line modules.

There are six general steps involved in creating an NBMA interface.

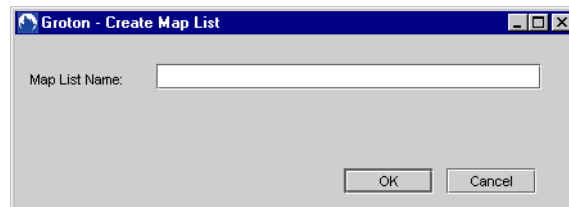
- Create a map list.
- Create map list entries.
- Assign a map list to the ATM interface.
- Create an NBMA interface.
- Create ATM circuits on the NBMA interface.
- Create an IP address on the NBMA interface (see *NMC-RX User Guide, Vol. 2, Chapter 6, Configuring IP*).

Creating a Map List

To create a map list:

- 1 From the Device-wide Explorer, click the System folder.
- 2 Right-click, select Create, and click Map List.

The Create Map List dialog box appears.



- 3 Type a map list name (1-32 characters), and click OK.

The map list is created.



Note: Map lists cannot be modified or viewed. A map list cannot be deleted if it is associated with an ATM interface.

Creating a Map List Entry

After you create a map list, you can add map list entries to it. Map list entries are used to route traffic for an IP address through a circuit by specifying the virtual circuit descriptor (VCD).

To create map list entries:

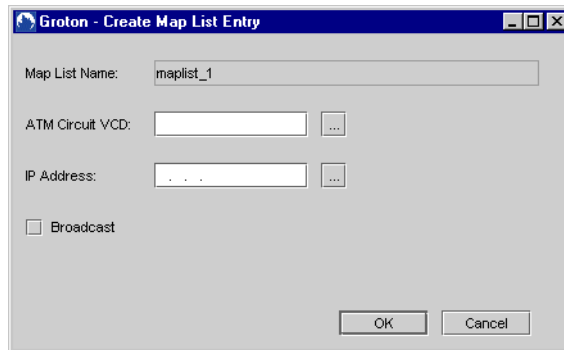
- 1 In the Device-wide Explorer, select Map List from the System folder, right-click, and click List.

Map lists are displayed in the list area.

- 2 In the list area, select a map list to which you want to add a map list entry.

- 3 Right-click, select Create, and click Map List Entry.

The Create Map List Entry dialog box appears.



- 4 Set the map list entry parameters. See Table 16-3.

Table 16-3 Map list entry parameters



Parameter	Description
ATM Circuit VCD	Circuit identifier. Must be unique within the map list. Identifies a VC configured on an ATM interface. Enter a value in the range of 1–4294967295, or click  to view and select an existing VCD from the Selected VCD Address dialog box (see the next section, <i>Related Dialog Boxes</i>).


Table 16-3 Map list entry parameters (continued)

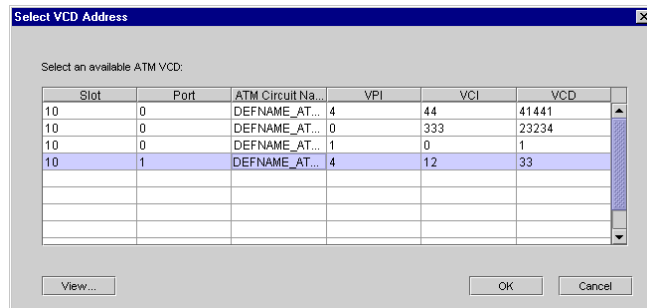
Parameter	Description
IP Address	Destination IP address associated with the VCD. Enter a valid address, or click  to search for and select an IP address in the Select IP Address dialog box (see the next section, <i>Related Dialog Boxes</i>).
Broadcast	Enables broadcast support

- 5 Click OK.
- 6 (Optional) Assign the map list to an ATM interface. See Table 16-1 on page 16-4.

Related Dialog Boxes


**ATM Circuit
VCD**

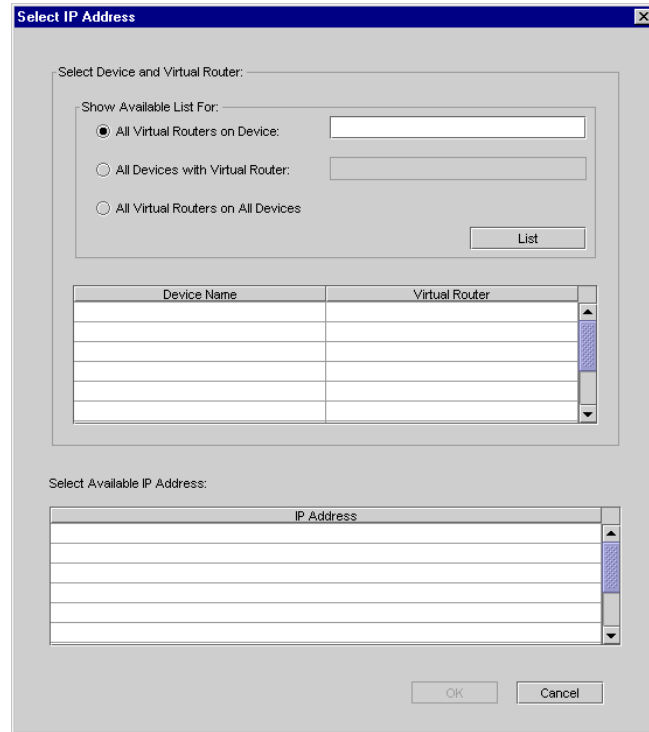
The Select VCD Address dialog box appears when you click  next to the ATM Circuit VCD field in the Create Map List Entry dialog box. Use it to view and select an existing VCD.



- 1 Click an available ATM VCD.
- 2 (Optional) Click View to display the circuit's full configuration.
- 3 Click OK.

The information is entered in the Create Map List Entry dialog box.

IP Address The Select IP Address dialog box appears when you click  next to the ATM Circuit VCD field in the Create Map List Entry dialog box. Use it to search for and select an IP address:



- 1 Select a search option, and click List.
- 2 Select a virtual router from the list. If the virtual router has been assigned IP addresses, the addresses are displayed below.
- 3 Select an IP address.
- 4 Click OK.

The information is entered in the Create Map List Entry dialog box.

Creating an NBMA Interface

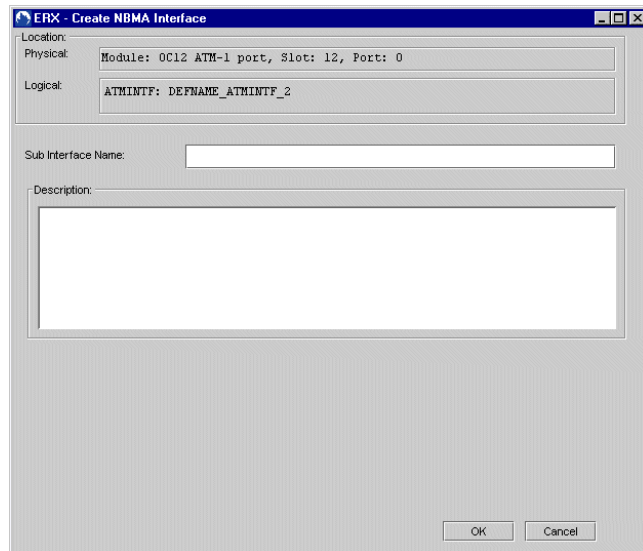


Note: The NMC-RX software supports NBMA only on ERX OC3-4 and OC12 line modules.

To create an NBMA interface:

- 1 Navigate to the ATM interface for which you want to create an NBMA subinterface.
- 2 With the ATM interface selected, right-click, select Create, and click NBMA Interface.

The Create NBMA Interface dialog box appears.



- 3 Enter a name in the Sub Interface Name text box, and include a description, if needed.
- 4 Click OK.



Note: You can create multiple ATM circuits (see p 16-16) and IP addresses (see NMC-RX User Guide, Vol. 2, Chapter 6, Configuring IP) on the NBMA interface.

Creating an ATM Subinterface

You can create an ATM subinterface from the interface or from a VP tunnel.



Note: Although these steps describe creating an ATM subinterface on an ATM interface, they can be used to create subinterfaces on a VP tunnel.

To create an ATM subinterface:

- 1 Navigate to the ATM interface in the list area.
- 2 Select a subinterface, right-click, select Create, and click ATM Sub Interface.

The Create ATM Sub Interface dialog box appears.

Encapsulation	Profile Name	Auto Configure	Subscriber Information	
			Enable	Details
IP	-- None --	<input type="checkbox"/>	<input type="checkbox"/>	...
PPP	-- None --	<input type="checkbox"/>		
PPPoE	-- None --	<input type="checkbox"/>		
Any	-- None --	<input type="checkbox"/>		

- 3 Set the ATM subinterface parameters. See Table 16-4.






Note: See *NMC-RX User Guide, Vol. 2, Chapter 7, Configuring Profiles*, for information about dynamic interfaces.

Table 16-4 ATM subinterface parameters


Parameter	Description
Name	Identifies the interface; generated automatically
Alias	Description of the interface; 0–15 characters; default blank
IfIndex	Identifies the interface on the particular line interface; generated automatically

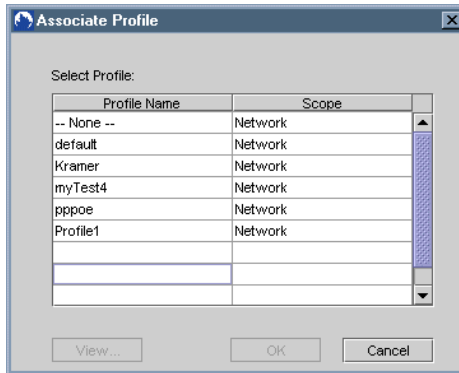
Table 16-4 ATM subinterface parameters (continued)

Parameter	Description
Operational	Current operational status of the interface
Administrative	Desired status of the interface: Up/Down; default Up
Dynamic Interfaces	
Encapsulation	Specifies the type of dynamic encapsulation that will be accepted and detected by the ATM 1483 subinterface
Profile Name	Click  to choose a profile from the Associate Profile dialog box. See the next section, <i>Related Dialog Boxes</i> .
Auto Configure	Enables autoconfiguration which causes the ATM subinterface to support a dynamic interface
Enable	Select to append subscriber information
Details	When Enable is checked, this field becomes active. Click  to display the Subscriber Details dialog box. See the next section, <i>Related Dialog Boxes</i> . Then configure a local subscriber on the ERX device to support authentication and configuration from RADIUS for a dynamic IPoA interface.
QoS	
Profile Name	<ul style="list-style-type: none"> Name of the attached QoS profile (a collection of QoS commands that specify queue profiles and scheduler profiles in combination with interface types) Enabled only on OC3 ATM-4 port, OC12 ATM-1 port, T3 ATM-4 port line modules Set value by clicking  and selecting a QoS profile from the Associate QoS Profile dialog box.

4 Click OK.


Related Dialog Boxes

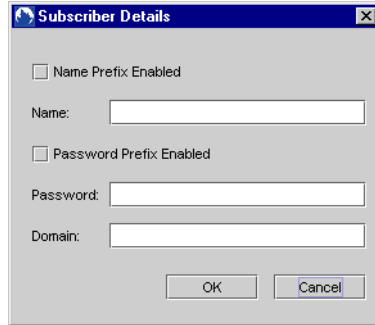
Profile Name The Associate Profile dialog box appears when you click  in the column next to Profile Name in the Create ATM Subinterface dialog box. Use it to select an profile.



- 1 Click a profile.
- 2 (Optional) Click View to display the profile’s full configuration.
- 3 Click OK.

The information is entered in the Create ATM Subinterface dialog box.

Details The Subscriber Details dialog box appears when you click  in the Details column in the Create ATM Subinterface dialog box. Use it to configure a local subscriber (when one cannot be obtained externally) on the ERX device to support authentication and configuration.



- 1 Complete each field.
 - Name Prefix Enabled – Specifies how the supplied username is used for authentication purposes. Select to add the username to the beginning of the interface physical location identifier.
 - Password Prefix Enabled – Specifies how the supplied password is used for authentication purposes. Select to add the password to the beginning of the interface physical location identifier. Password usage is optional.
- 2 Click OK when done.

The information is entered in the Create ATM Subinterface dialog box.

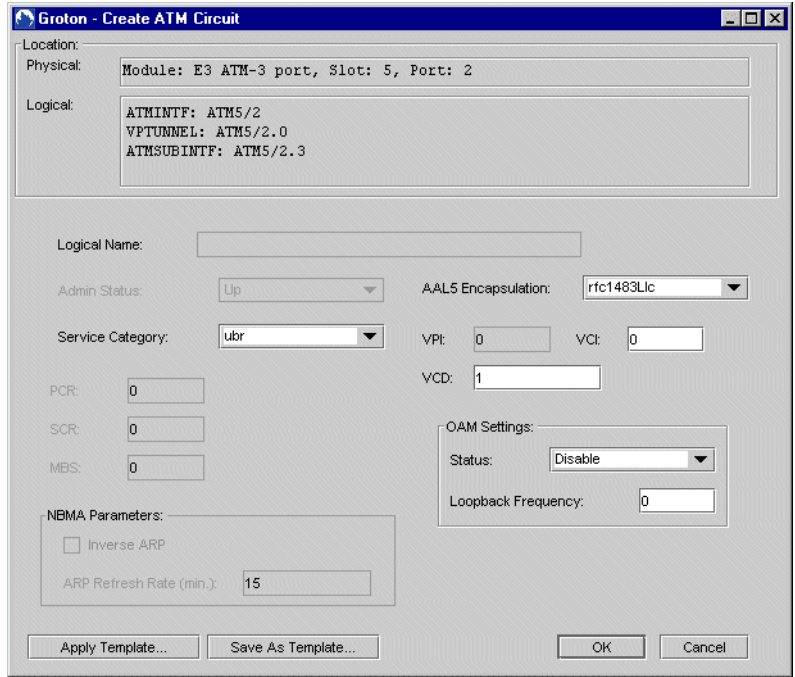
Creating an ATM Circuit

In the NMC-RX application, you need to navigate to the ATM subinterface level to create an ATM circuit for the module.

To create an ATM circuit:

- 1 Navigate to the ATM subinterface in the list area.
- 2 In the list area, click a subinterface, right-click, select Create, and click ATM Circuit.

The Create ATM Circuit dialog box appears.



3 Set the ATM circuit’s parameters. See Table 16-5.

Table 16-5 ATM circuit parameters

Parameter	Description
Logical Name	Identifies the particular instance; generated automatically
Admin Status	<ul style="list-style-type: none"> Up – interface is enabled by the administrator Down – interface is disabled by the administrator
AAL5 Encapsulation	<ul style="list-style-type: none"> rfc1483VcMux – aal5muxip rfc1483Llc – aal5snap
Service Category	Service category for traffic management: <ul style="list-style-type: none"> ubr – unspecified bit rate traffic management; select if no VCs require traffic shaping ubrPcr – unspecified bit rate peak cell rate; select for PCR only nrtVbr – non-real-time variable bit rate; can select for PCR, SCR, or MBS
VPI	Virtual Path Identifier; dependent on values set on ATM interface; range 0– 55 Note: The VPI and VCI values cannot both be set to 0.
VCI	Virtual Circuit Identifier; dependent on values set on ATM interface; range 0–65535 Note: The VCI and VPI values cannot both be set to 0.
VCD	Virtual Circuit Descriptor; dependent on values set on ATM interface; range 1–4294967295

Table 16-5 ATM circuit parameters (continued)

Parameter	Description
PCR	Peak cell rate; value must be greater than or equal to SCR <ul style="list-style-type: none"> • OC3, OC3-ATM, OC12-ATM – range 1–99999 • E3 – range 64–30528 • T3 – range 64–44209
SCR	Sustained cell rate <ul style="list-style-type: none"> • OC3, OC3-ATM, OC12-ATM: range 1–99999 • E3: range 64–30528 • T3: range 64–44209
MBS	Maximum burst size <ul style="list-style-type: none"> • OC3, OC3-ATM, OC12-ATM: range 1–99999 • E3: range 64–30528 • T3: range 64–44209
NBMA Parameters	
Inverse ARP	Enables InARP on the circuit
ARP Refresh Rate (Min.)	Specifies refresh rate for ARP in minutes; range 1–60
OAM Settings	
Status	Enables OAM F5 loopback cell generation on the circuit; enables VC integrity features that have an effect on the operational state of the ATM PVC
Loopback Frequency	Time interval in seconds between transmissions of OAM F5 loopback cells; range 0–600. If this option is not specified, OAM F5 loopback cells are generated once every 10 seconds.

4 Click OK.

Pinging from an ATM Circuit

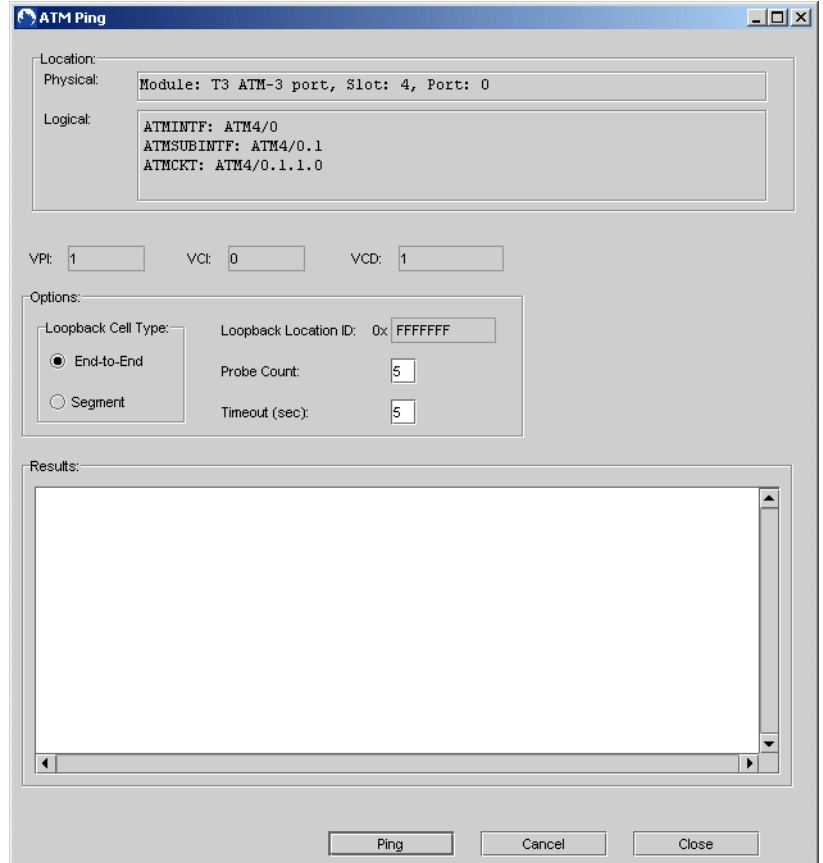
You can ping from an ATM circuit by using the ATM Ping command. Only one ping can execute at a time on a selected ATM circuit, but up to 12 pings can be executed at the same time across the ATM interface. For the ping to work, the OAM admin status on the ATM interface must be enabled and the line interface status must be up.

An ATM ping may abort if the line interface goes down, the OAM admin status is disabled, or if the circuit is deleted. Error messages appear in either the Results field or in popup messages.

To ping an ATM circuit:

- 1 Select an ATM circuit in the list area, right-click, and click ATM Ping.

The ATM Ping dialog box appears. Note that the circuit's VPI, VCI, and VCD values are automatically entered.



- 2 Set the ping parameters. See Table 16-6.

Table 16-6 ATM ping parameters

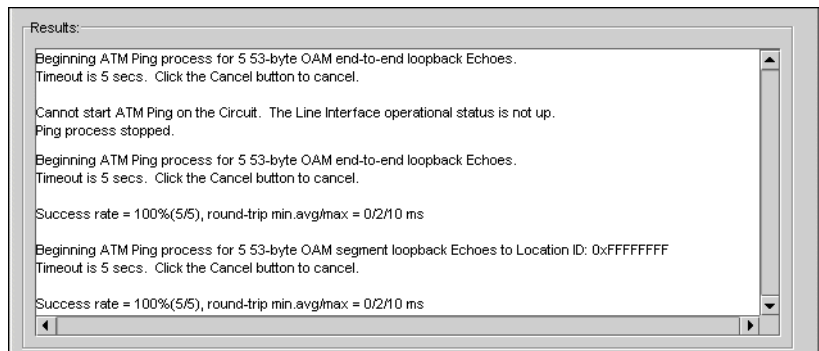
Parameter	Description
VPI	Virtual path identifier of the selected circuit; uneditable
VCI	Virtual circuit identifier of the selected circuit; uneditable
VCD	Virtual circuit descriptor of the selected circuit; uneditable

Table 16-6 ATM ping parameters (continued)

Parameter	Description
Loopback Cell Type	Specifies type of OAM loopback cells to use for the ping request <ul style="list-style-type: none"> • End-to-End – use end-to-end loopback cells • Segment – use segment OAM loopback cells
Loopback Location ID (0x)	<ul style="list-style-type: none"> • loopback location ID for the destination • should correspond to a loopback location ID previously established on a network component • applicable only when Segment is selected as the loopback cell type • hexadecimal value; range 0–FFFFFFFF; default FFFFFFFF; note that 0x is assumed and must not be entered manually
Probe Count	Number of ping probes (OAM cells) to be sent to complete the test; range 1–30; default 5
Timeout (secs)	Specifies the timeout value for a remote ping operation; range 1–5 seconds; default 5
Results	Contains the ping results or ping error messages

3 Click Ping.

Results are displayed in the Results field.



ATM Statistics

The NMC-RX application allows you to view and monitor information about ATM major interfaces, subinterfaces, and circuits. Once you select a configured device, you simply list the objects and request statistics, and a Statistics tab is displayed.

To view statistics:

- 1 From the Device-wide Explorer, select ATM, and click either Interfaces, Sub Interfaces, or Circuits.
- 2 Right-click, and click List All.

A list of all objects of the type you selected, which are configured on the device, appears in the list area.

- 3 From the list, select the interface, subinterface, or circuit for which you want to view statistics, right-click, and click Statistics.

The appropriate Statistics tab appears. Refer to the following sections for descriptions.

ATM Interface and Subinterface Statistics

The ATM interface and subinterface Statistics tab is shown below. Table 16-8 describes the attributes.

Save Lower Layer

Statistics

Location:

Physical: Module: T3 ATM-3 port, Slot: 4, Port: 0

Logical: ATMINTF: ATM4/0
ATMSUBINTF: ATM4/0.1

System Up Time: 3 days, 22 hours, 49 minutes, 5 seconds.

Poll Interval (sec.): 20 Refresh

Attribute	Raw Value	Delta Value	Rate (per second)
Received Octets	0	0	0
Transmitted Octets	0	0	0
Received Packets with Errors	0	0	0
Transmitted Packets with Errors	0	0	0
Unknown Protocol Packets	0	0	0
Received Ucast Packets	0	0	0
Transmitted Ucast Packets	0	0	0
Received Packets Discarded	0	0	0
Transmitted Packets Discarded	0	0	0
Received Multicast Packets	0	0	0
Transmitted Multicast Packets	0	0	0
Received Broadcast Packets	0	0	0
Transmitted Broadcast Packets	0	0	0

Table 16-7 ATM Interface statistics attributes

Attribute	Description
System Up Time	Time since last reported change to the operational status
Poll Interval (sec)	Interval in seconds between POLL PDU transmissions
Refresh	When button is clicked, the statistics are refreshed
Received Octets	Number of incoming octets received on this interface or subinterface
Transmitted Octets	Number of outgoing octets transmitted on this interface or subinterface
Received Packets with Errors	Number of incoming errors received on this interface or subinterface
Transmitted Packets with Errors	Number of outgoing packets with errors on this interface or subinterface
Unknown Protocol Packets	Number of packets discarded because of an unknown or unsupported protocol
Received Ucast Packets	Number of packets received that were not addressed to a multicast or broadcast address
Transmitted Ucast Packets	Number of packets transmitted that were not addressed to a multicast or broadcast address
Received Packets Discarded	Number of received packets without errors discarded
Transmitted Packets Discarded	Number of transmitted packets without errors discarded
Received Multicast Packets	Number of packets received that were addressed to a multicast address
Transmitted Multicast Packets	Number of packets transmitted that were addressed to a multicast address
Received Broadcast Packets	Number of packets received that were addressed to a broadcast address
Transmitted Broadcast Packets	Number of packets transmitted that were addressed to a broadcast address

ATM Circuit Statistics

The ATM circuit Statistics tab is shown below. Table 16-8 describes the attributes.

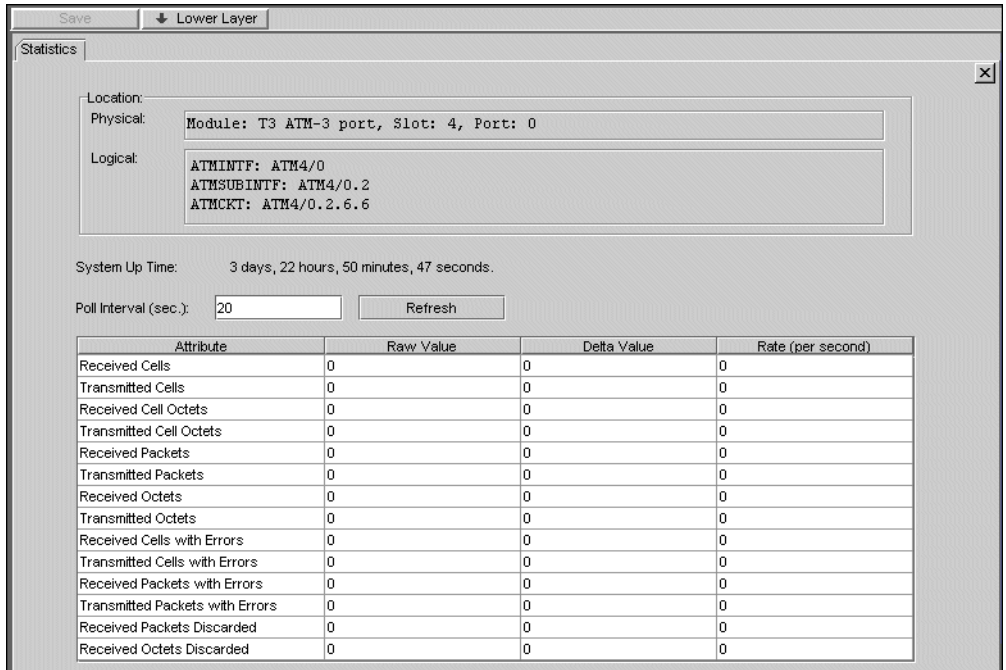


Table 16-8 ATM circuit statistics attributes

Attribute	Description
System Up Time	Time since last reported change to the operational status
Poll Interval (sec)	Interval in seconds between POLL PDU transmissions
Refresh	When button is clicked, the statistics are refreshed
Received Cells	Number of cells received
Transmitted Cells	Number of cells transmitted
Received Cell Octets	Number of cell octets received
Transmitted Cell Octets	Number of cell octets transmitted
Received Packets	Number of AAL PDUs received
Transmitted Packets	Number of AAL PDUs transmitted
Received Octets	Number of AAL PDU octets received
Transmitted Octets	Number of AAL PDU octets transmitted
Received Cells with Errors	Number of received cells dropped due to error

Table 16-8 ATM circuit statistics attributes (continued)

Attribute	Description
Transmitted Cells with Errors	Number of transmitted cells dropped due to error
Received Packets with Errors	Number of received packets dropped due to error
Transmitted Packets with Errors	Number of transmitted packets dropped due to error
Received Packets Discarded	Number of received packets without errors discarded
Received Octets Discarded	Number of transmitted octets without errors discarded