

Chapter 10

Setting Up User Local Authentication

This chapter describes how to set up users to use the JUNOScope software to run configuration management operations and monitor Juniper Networks routing platforms.

You can add the users you want to log in to and use the JUNOScope software, and specify permissions to perform authorized JUNOScope software operations. You can add, change, and delete JUNOScope software user information when personnel changes occur.

You can import user information from another JUNOScope server or export it as backup or for importing to another server.

You must have superuser permission to add users.

This chapter includes the following topics:

- User Permission Levels on page 111
- Adding a User on page 112
- Copying a User on page 113
- Viewing Users on page 114
- Editing User Information on page 115
- Importing User Information on page 116
- Exporting User Information on page 117
- Deleting a User on page 118

User Permission Levels

As the JUNOScope software administrator, you can add users with superuser, read-write, or read-only access privileges. Table 5 on page 15 summarizes the tasks and privilege levels required to use the JUNOScope software.

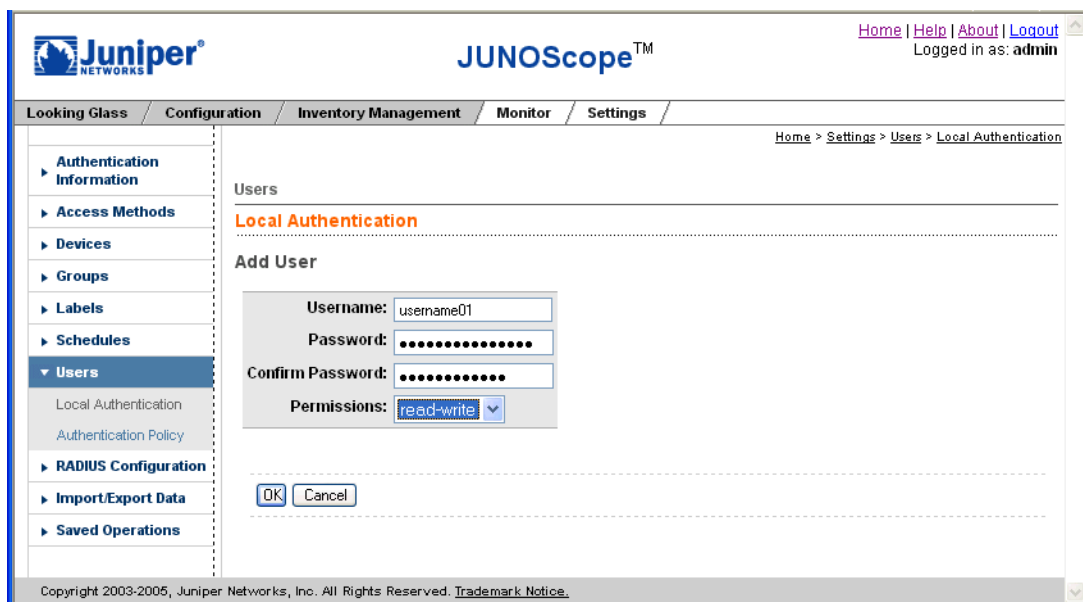
No user privilege level is required to perform planning tasks. Planning tasks can be performed in the network operations center (NOC) by a network designer or engineer.

Adding a User

You can enable users to perform certain JUNOScope operations. Each user must have a username, password, and permissions.

To add a user, follow these steps:

1. In the JUNOScope main window, click Settings > Users > Local Authentication. The Local Authentication dialog box appears.
2. Click Add. The Add User dialog box appears.



3. In the Username text box, type the name of the user you want to add. The username can be up to 20 characters long.
4. In the Password text box, type the user password. The user password should be between 3 and 40 characters long.
5. In the Confirm Password text box, retype the user password to confirm it.
6. In the Permissions drop-down list box, select the permission level for the user. The available options are **superuser**, **read-write**, and **read-only**. For more information about what operations users can perform with the permissions, see Table 5 on page 15.
7. Click OK.

The new user is added to the JUNOScope software database and listed in the Users dialog box by username, access privilege level, and toolbox access level.

Copying a User

To copy a user that you have added, follow these steps:

1. In the JUNOScope main window, click Settings > Users > Local Authentication. The Local Authentication dialog box appears.
2. Select the check box for the user you want to copy.
3. Click Copy. The Add User dialog box appears.



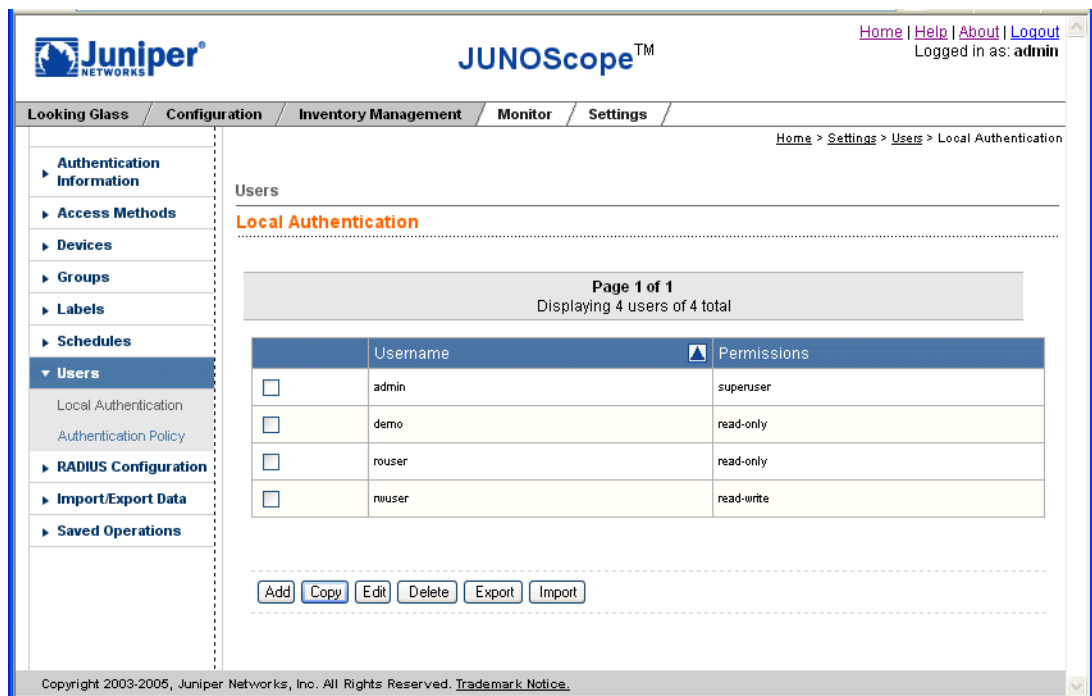
The copied user appears with a 1 (the number one) after the name.

4. Edit the copied user information using the procedure “Editing User Information” on page 115.

Viewing Users

You can view a list of users and other administrators who have access privileges to use the JUNOScope software.

To view JUNOScope software users, in the JUNOScope main window, click Settings > Users > Local Authentication. The Local Authentication dialog box appears with a list of all added users by username and permissions.



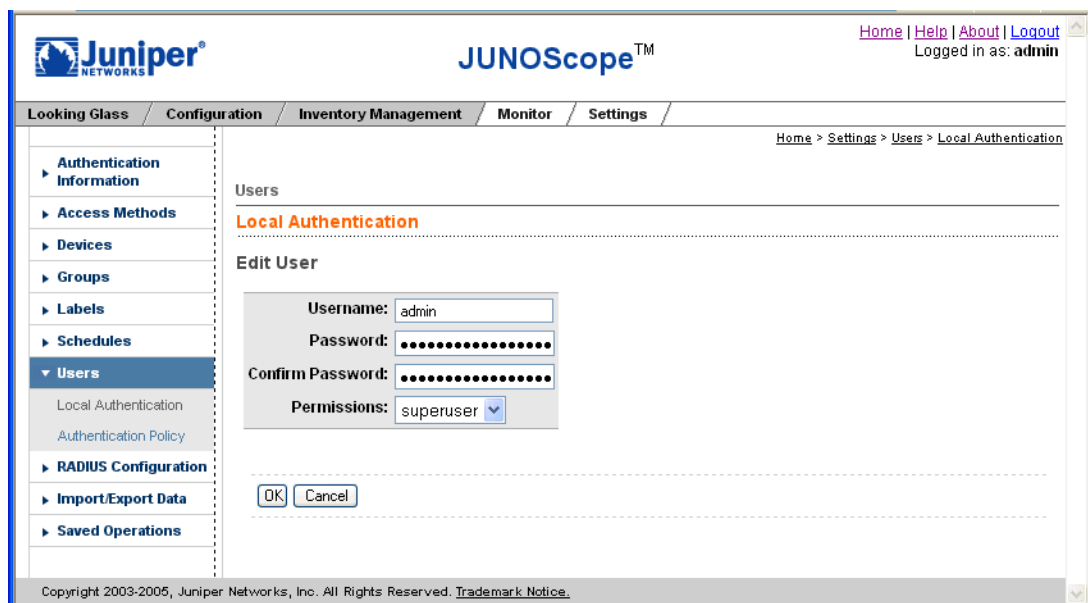
From the Local Authentication dialog box, you can add, edit, or delete JUNOScope software users. Click a table column name to sort by that column. Clicking the column name toggles between ascending and descending sort order.

Editing User Information

You can make changes to user information when personnel changes occur.

To edit user information, follow these steps:

1. In the JUNOScope main window, click Settings > Users > Local Authentication. The Local Authentication dialog box appears.
2. Select the check box for the user that you want to edit.
3. Click Edit. The Edit User dialog box appears.



4. Edit the user information as needed:
 - a. In the Username text box, type the name of the user you want. The username can be up to 20 characters long.
 - b. In the Password text box, type the user password. The user password should be between 3 and 40 characters long.
 - c. In the Confirm Password text box, retype the user password to confirm it.
 - d. In the Permissions drop-down list box, select the permission level for the user. The available options are `superuser`, `read-write`, and `read-only`. For more information about what operations users can perform with the permissions, see Table 5 on page 15.
5. Click OK.

The user information is changed in the JUNOScope software database. The changed username or permissions appear in the Users dialog box.

Importing User Information

You can import user information from another JUNOScope server, or you can use the provided sample XML import file `export-import-sample.xml` as a guide.

Importing user information is useful when you do not want to enter setup information manually.

To import user information, follow these steps:

1. In the JUNOScope main window, click `Settings > Users > Local Authentication`. The Local Authentication dialog box appears.
2. Click `Import`. The Import Users dialog box appears.

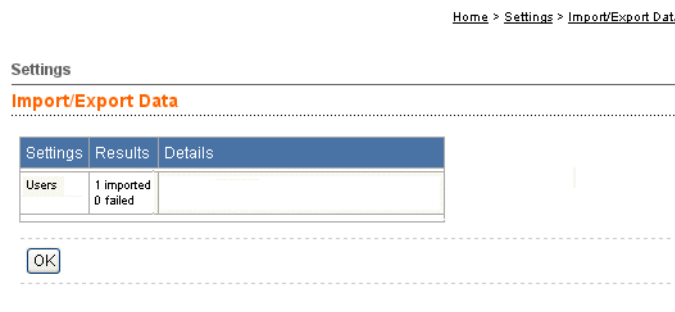
3. In the File text box, either browse to or type the name of the XML file that you want to import. For example, you can import the default `users.xml` export file from another JUNOScope server or use the provided sample `export-import-sample.xml` XML file on the JUNOScope server to generate a file to import.



NOTE: The junoscope- XML file prefix is not generated if you use the Microsoft Internet Explorer 6.0 Web browser to export JUNOScope setup data. You will only see the `users` filename.

4. To support synchronizing JUNOScope settings imported from multiple servers, select an import method to be used if a conflict occurs between existing records stored in the JUNOScope server and imported records. The available import method options include:
 - **Ignore—(Default)** An existing record stored in the JUNOScope server takes precedence over any imported record. The imported record is ignored and the existing record is not affected. Any imported record that does not exist in the JUNOScope server is inserted.

- Merge—If a record exists in the JUNOScope server and also exists in the imported record, the imported record merges with the existing record and is augmented as necessary. If an imported record is in conflict with an existing record, the imported record takes precedence over the existing record. The existing record is merged with the imported record; however, the fields of imported record take precedence over the fields of the existing record. Any imported record that does not exist in the JUNOScope server is inserted.
 - Override—All records in the JUNOScope server are deleted, then all imported records are inserted. Before the override operation occurs, a message window appears with the following confirmation prompt: “The import with override option will delete all the existing records. Do you want to continue?” Select Yes or No to continue.
5. Click Import. The Import status dialog box appears.



The dialog box indicates the number of records imported successfully and unsuccessfully. The Details column provides a description for records that fail import.

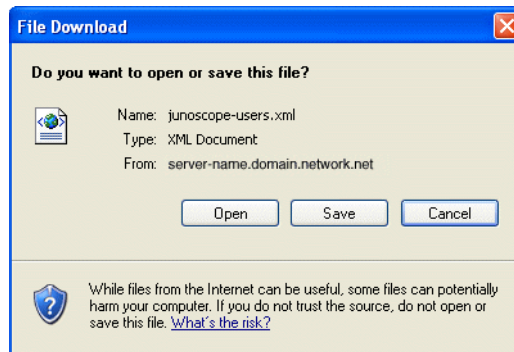
6. Click OK. The imported data is listed in the Users Local Authentication dialog box.

Exporting User Information

You can export user information that you want to save to the local file system or import to another JUNOScope server.

To export user information, follow these steps:

1. In the JUNOScope main window, click Settings > Users > Local Authentication. The Local Authentication dialog box appears.
2. Click Export. The File Download dialog box appears.



3. Click Save to save the RADIUS authentication data and export it to the file system in a file named `junoscope-radiusClients.xml`. Click Open to view the contents of the export file.

Deleting a User

The JUNOScope software administrator can delete users who no longer need to perform JUNOScope operations.

To delete a user, follow these steps:

1. In the JUNOScope main window, click Settings > Users > Local Authentication. The Local Authentication dialog box appears.
2. Select the check box for the user you want to delete.
3. Click Delete.

The user is removed from the JUNOScope software database and the Users dialog box.