

Chapter 19

Restoring a Configuration File

This chapter describes how to restore an archived configuration file from the JUNOScope software Concurrent Versions System (CVS) repository to the same router from which you archived it. It also describes how to upload an imported a configuration file to any router. The configuration file is committed and overrides, replaces, or merges the active configuration file currently running on the router.

Configuration file versions are stored in the CVS repository when you archive or import them.

This chapter also describes how to save a restore operation so that you can combine it with other operations, such as archive and inventory scan, to run on specified devices in your network.

You must have superuser or read-write permission to restore a configuration file.

This chapter includes the following topics:

- What Happens on the Router During a Restore Operation on page 201
- Restoring a Configuration on page 202
- Saving a Configuration Restore Operation on page 206

What Happens on the Router During a Restore Operation

The following steps describe what happens on the router when the JUNOScope software performs a restore and archive:

1. The user selects the configuration revision to restore.
2. JUNOScope connects to the JUNOScript server on the target router.
3. JUNOScope sends the following commands to the JUNOScript server to be performed on the router:
 - a. Lock the router configuration.
 - b. Load the new configuration on the router, overriding (discarding), replacing (deleting and adding), or merging (combining) the old configuration.
 - c. Issue a `commit confirmed` command.

- d. Issue a `commit-configuration` JUNOScript XML tag command. If the user specified it, JUNOScope issues a `commit synchronize` command.
- e. Unlock the configuration.



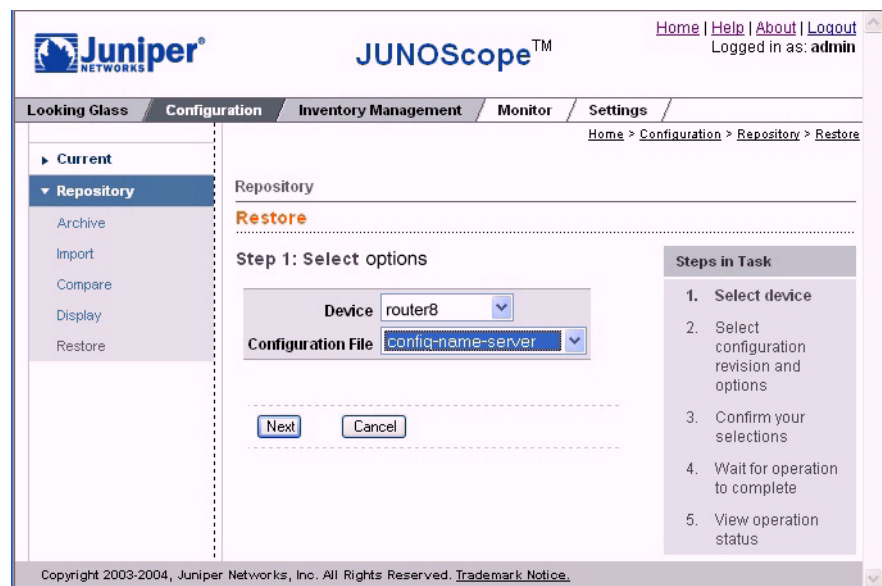
NOTE: If an error occurs, JUNOScope issues a `rollback` command, causing the configuration to revert to the last saved configuration.

4. JUNOScope updates the final status values for the restore operation.

Restoring a Configuration

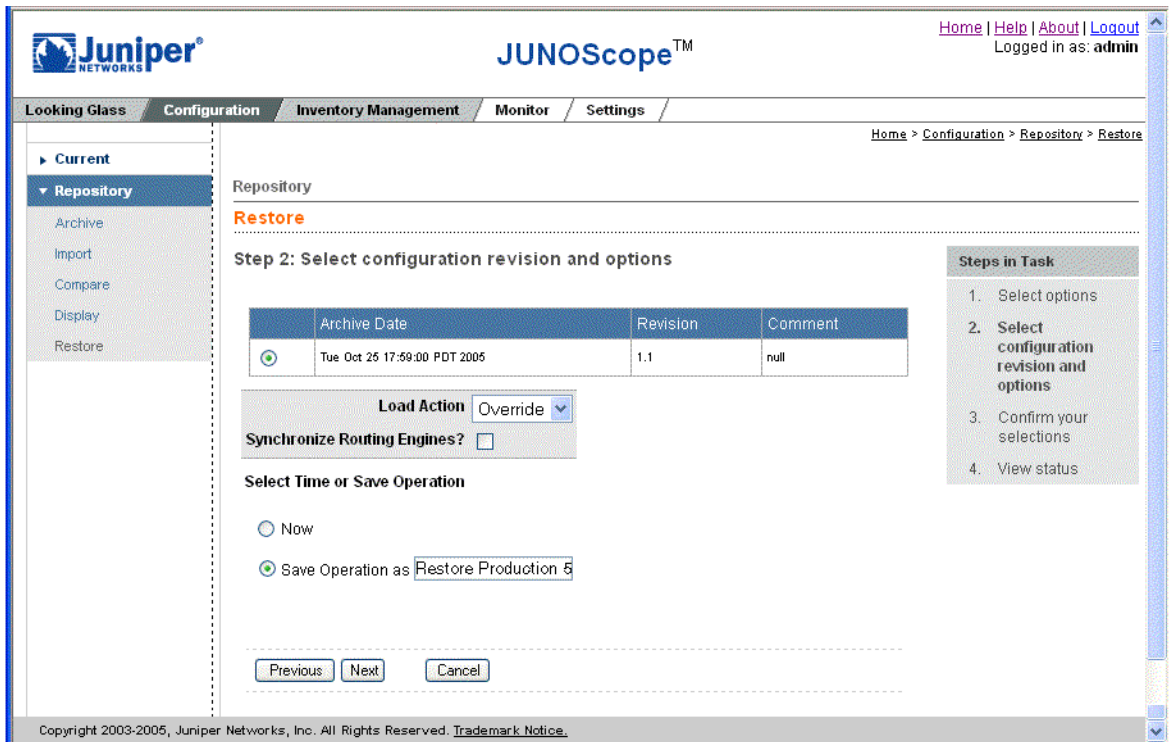
To restore a configuration file, follow these steps:

1. In the JUNOScope main window, click `Configuration > Repository > Restore`. The Restore—Select Options dialog box appears.



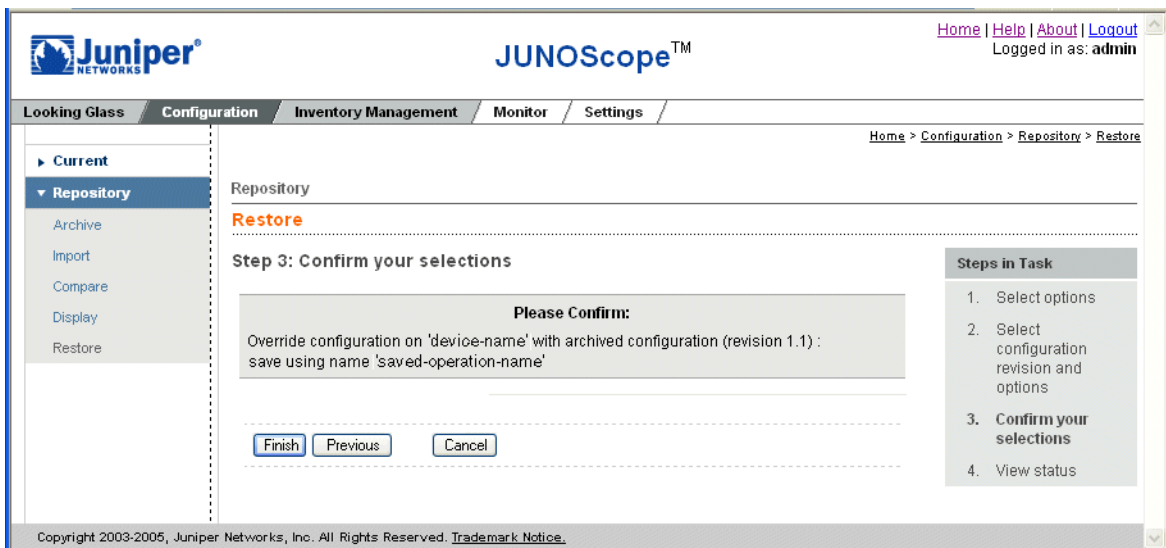
2. In the Device drop-down list box, select a device to which to restore a configuration file.
3. Do one of the following:
 - To restore an archived configuration, ensure that Archived Configuration (the default selection) is selected in the Configuration File drop-down list box.
 - To restore an imported configuration file, select a filename in the Configuration File drop-down list box. Configuration filenames only appear in the Configuration File drop-down list box when you have imported a configuration file. If you have not imported a configuration file, Archive Configuration only appears in the Configuration File drop-down list box.

- Click Next. The Restore—Select configuration revision dialog box appears with the configurations stored in the JUNOScope CVS repository listed by archive date, revision, and comment.



- Click the option button for the configuration file to restore.
- Select whether you want to override, replace, or merge (default) the current configuration on the device. The available options include:
 - Override**—Discards all of the current configuration and loads the selected configuration.
 - Replace**—Deletes the current configuration statement(s) and adds the selected configuration.
 - Merge**—(Default) Combines the selected configuration statement(s) with the current configuration. If there are conflicting statements, the statements in the incoming configuration override those in the current configuration.
- If the router has two Routing Engines installed, click the Synchronize Routing Engines check box. This option restores the configuration on both Routing Engines.

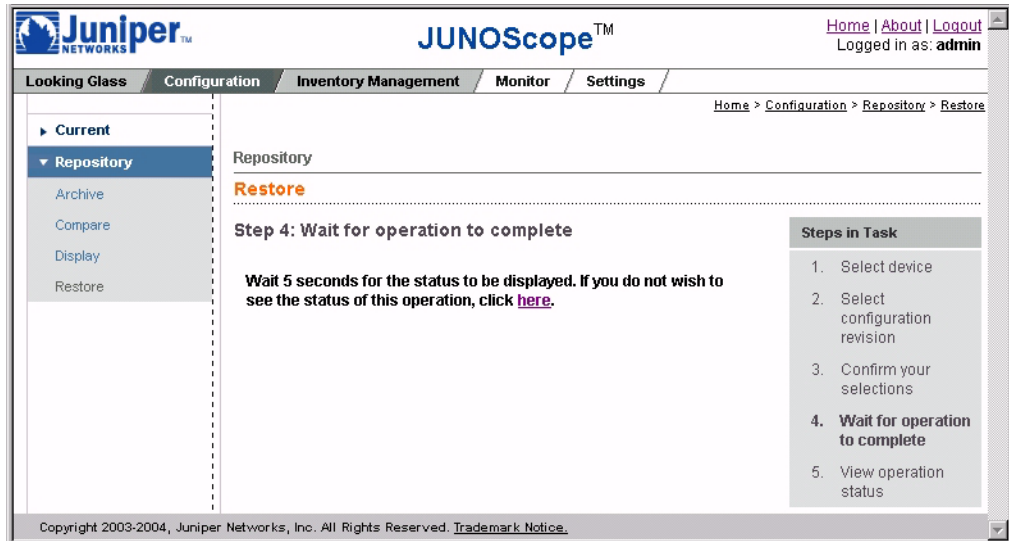
8. Select when you want the restore operation to occur.
 - Click the Now option button to perform the restore operation immediately.
 - Click the Save Operation as option button to save the restore operation so that you can combine it with other operations to be run concurrently or in sequence. Type a name for the restore operation in the text box.
9. Click Next. The Restore—Confirm your selections dialog box appears.



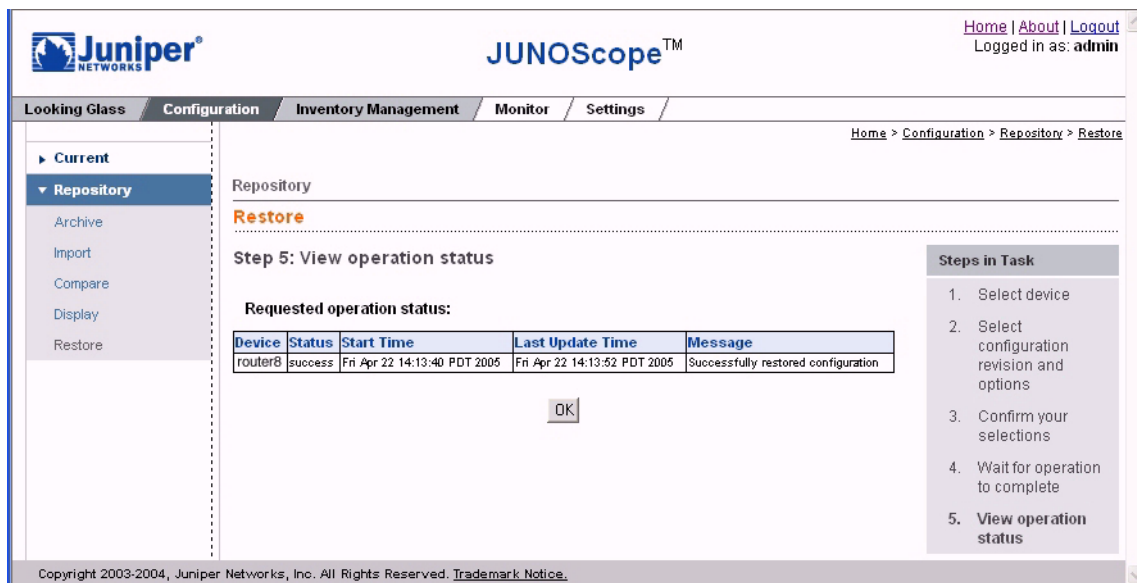
10. Click Finish to confirm the restore operation.

If you selected to save the restore operation, the Configuration > Repository menu appears. To view the saved restore operation, click Settings > Saved Operations.

11. The Restore—Wait for operation to complete dialog box appears; wait for the Restore operation to complete.



After a few seconds, the Restore—View operation status dialog box appears.



The Requested Operation Status dialog box lists the restore operation results by device, status, start time, last update time, and status message.

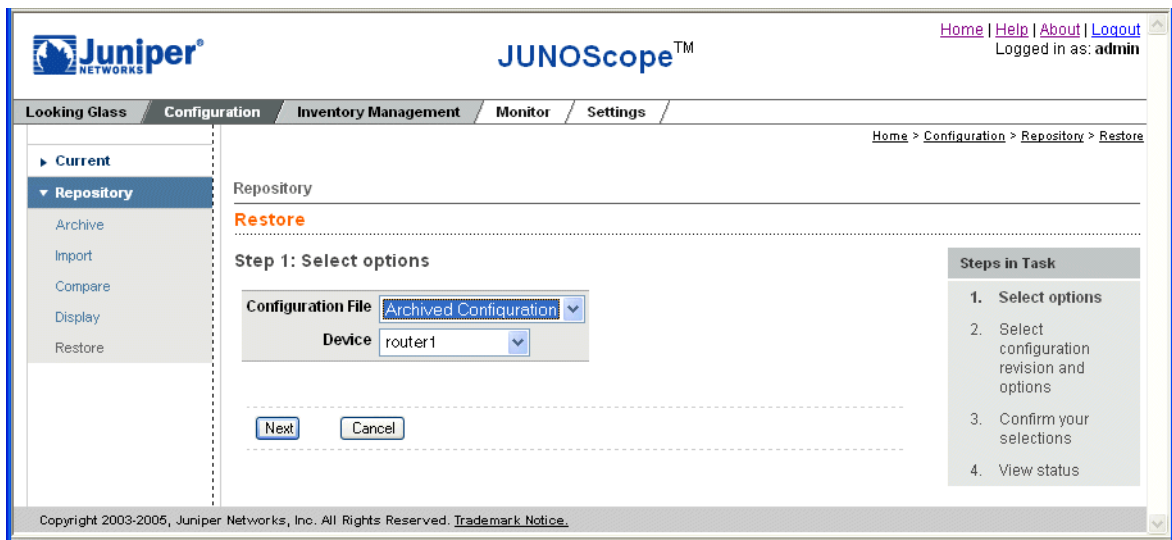
12. Click OK.

Saving a Configuration Restore Operation

You can save restore operations and combine them with other saved operations to be run concurrently or sequentially on specific devices either immediately or at a specified time or interval.

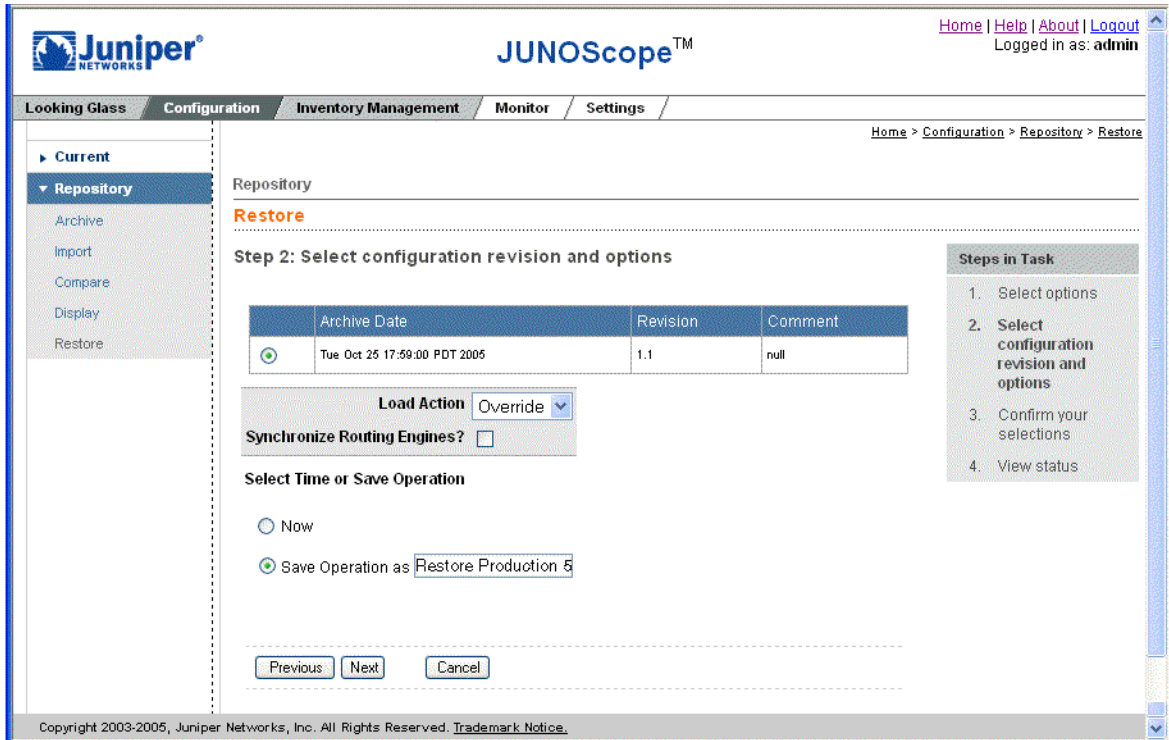
To save a restore operation, follow these steps:

1. From the JUNOScope main window, click Configuration > Repository > Restore. The Restore—Select Options dialog box appears.

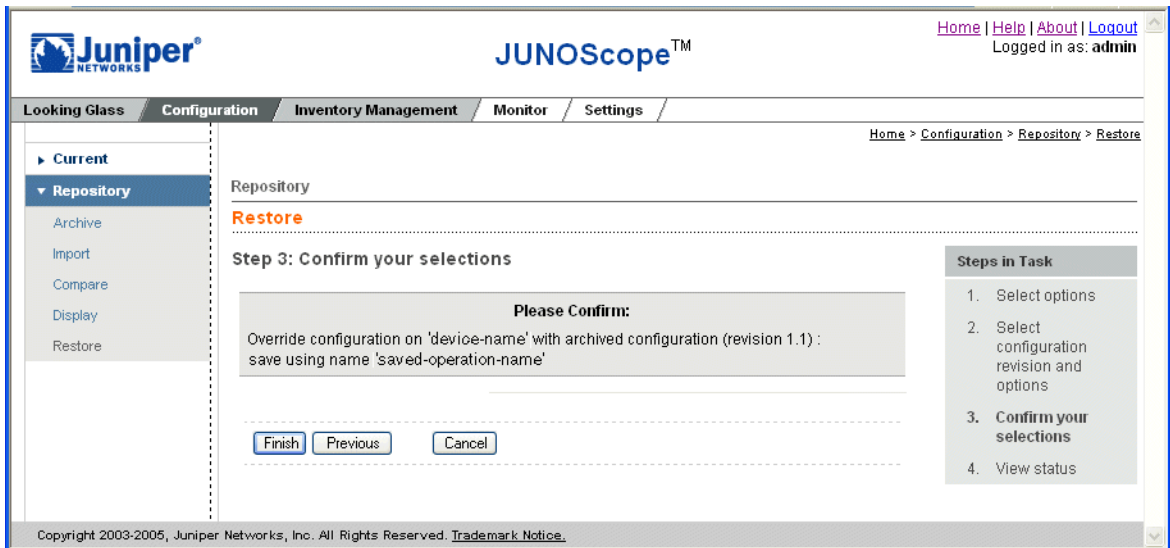


2. Select the configuration file or device that you want to restore to one or more devices.

3. Click Next. The Restore—Select Device and Time dialog box appears.



4. Select the archive revision that you want to restore.
5. Select the Restore load action that you want.
 - **Override**—Discards all of the current configuration and loads the selected configuration.
 - **Replace**—Deletes the current configuration statement(s) and adds the selected configuration.
 - **Merge**—(Default) Combines the selected configuration statement(s) with the current configuration. If there are conflicting statements, the statements in the incoming configuration override those in the current configuration.
6. If the device has redundant Routing Engines, select whether to synchronize them.
7. Click the Save Operation as option button and type a unique name in the Save Operation text box.
8. Click Next. The Restore—Confirm Your Selections dialog box appears.



9. Confirm that the restore selections that you want to save are correct, then click Finish.

You return to the Configuration > Repository menu. To view a saved restore operation, click Settings > Saved Operations. To work with saved operations, see “Using Task Manager (Saved Operations)” on page 153.