



Thank you for choosing the Neoteris Instant Virtual Extranet (IVE) appliance! In four easy steps, you can install your IVE and start configuring your system for users.

Decide where to install the appliance in your LAN. Make sure that the appliance can communicate with all the appropriate resources, such as file, Web, and DNS servers. Later you can assign an external IP address for external access and open the appropriate ports for SSL traffic. For more information about where to install the appliance and which ports to open for SSL traffic, please see Chapter 2 in the Installation and Administration Guide before proceeding. (The guide is included in the product packaging.)

## Step 1 Install the hardware

1. Rack-mount the machine.
2. On the **rear** panel, plug the included power cord into the AC Receptacle.
3. On the **front** panel:
  1. **Push the power switch** in the right corner one time. The green LED to the right of the power switch turns on.
  2. Plug an ethernet cable into the **left** port:



3. Plug a serial cable from a console terminal or laptop into the serial port:



## Step 2 Enter serial console settings

1. Configure the console terminal or a terminal emulation utility running on a computer, such as HyperTerminal, to use these serial connection parameters:
  - 9600 bits per second
  - 8-bit No Parity (8N1)
  - 1 Stop Bit
  - No flow control
2. Press **Enter** until you are prompted by the initialization script.
3. Enter **y** to accept the license terms.
4. Enter the machine information for which you are prompted, including the:
  - IP address
  - Network mask
  - Default gateway address
  - Primary DNS server address
  - Secondary DNS server address (optional)
  - Default domain name (example: acmegizmo.com)
  - WINS server name or address (optional)
  - Administrator username
  - Administrator password
  - Repeat password
  - Organization name (example: Acme Gizmo, Inc.)
  - Fully qualified domain name for the company (example: connect.acmegizmo.com)

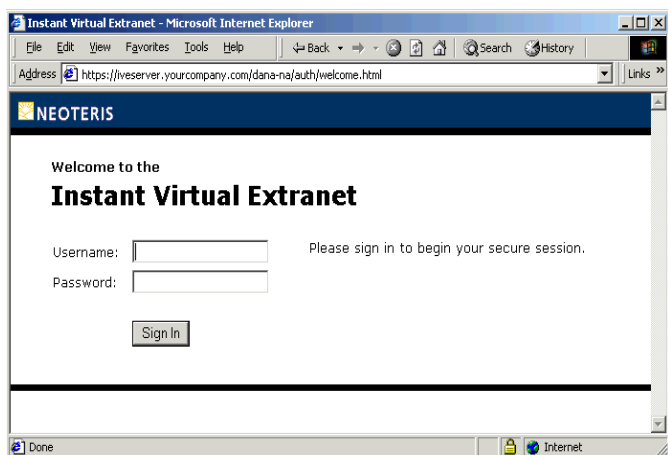
**Note:** The last two pieces of data are used to create a self-signed digital certificate.

The serial console setup is complete after entering this information. When prompted with the option to modify your settings, choose the appropriate option or continue.

## Step 3 Perform basic setup

1. Enter the Neoteris machine's URL in a browser to sign in to the system. The machine URL is in the format: `https://a.b.c.d`, where a.b.c.d is the machine IP address you entered in Step 2-3. If the Neoteris sign-in screen

appears, you have successfully connected your IVE appliance to the network.



2. In the Neoteris IVE sign-in screen, enter the administrator username and password you entered in Step 2-3 (it's case-sensitive), and then click **Sign In**. The Administrator Console appears.
3. From the main menu, choose **General > Time**. The **Time** page appears.
4. Specify the machine time and click **Save Changes**.
5. From the main menu, choose **General > License**. The **License** page appears.
6. Enter your company name and license code in the appropriate fields and then click **Enter**. Your license code information appears on the **License** page.
7. From the main menu, choose **New Local User**. The **New Local User** page appears.
8. Create a test user by entering a username, a full name, and a password for local authentication and then click **Create User**. The test user is added to the Users group.

## Step 4 Verify user accessibility

1. To verify that users can access the Neoteris machine, go to a desktop workstation and enter the Neoteris

machine's URL in a browser. The machine URL is `https://a.b.c.d`, where a.b.c.d is the machine IP address you entered in Step 2-3. When prompted with the security alert to proceed without a signed certificate, click **Yes**. The Neoteris IVE sign-in screen appears.

2. Enter the username and password you created for the test user in Step 3-8 and then click **Sign In**. The IVE home page appears.
3. Under **Browse the Web**, enter a URL and click **Go**. The Neoteris IVE browses to the Web site and displays the browsing toolbar on the specified page. Use this toolbar to return to the IVE home page by clicking on the Neoteris icon in the center.



4. Test a few more internal and external sites.
5. Next to **Windows Shared Folders**, click **Add Share**. Follow the online instructions to create a link to a shared network drive on your LAN. The network share should be added to the **Windows Shared Folders** list.
6. Browse to the share and try to download and upload a file. For more information, click the **Help** link at the top of the IVE home page.

After verifying user accessibility, your Neoteris IVE is operational! To complete system configuration, sign in to the Administrator Console again to set up user accounts, access control, and the authentication method. We also recommend that you download the latest service package from <http://support.neoteris.com> so that you are running the most current version of the Neoteris IVE server and have access to the latest documentation.

When you're ready to make your Neoteris IVE appliance available from external locations, you need to reconfigure your firewall. For detailed configuration information, see the Installation and Administration Guide, which is included in the product packaging and is available online in PDF from the Administrator Console's **Help** link.

These installation instructions are also included in the Installation and Administration Guide for future reference.