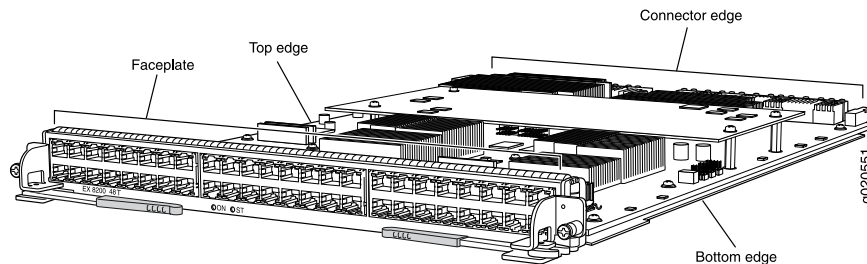


Handling and Storing Line Cards in EX 8200 series Switches

Components in the line cards are fragile. To avoid damaging the line cards, follow the procedures in this topic. The procedures use the following terms to describe the four edges of the line cards (see Figure 1):

Figure 1: Edges of the Line Cards in an EX 8200 series Switch



- Faceplate—Edge of the line card that has connectors into which you insert the transceivers or RJ-45 cables.
- Connector edge—Edge opposite the faceplate.
- Top edge—Edge at the top of the line card when the line card is vertical.
- Bottom edge—Edge at the bottom of the line card when the line card is vertical.



CAUTION: Failure to handle line cards as specified in these procedures can cause irreparable damage to them.

This topic describes the following tasks:

- Holding a Line Card on page 1
- Storing a Line Card on page 3

Holding a Line Card

You must hold a line card horizontally when installing it in the chassis. You may hold a line card vertically or horizontally when carrying it.



CAUTION: The line cards in EX 8200 series switches weigh more than 10 lb (4.5 kg). Be prepared to accept the full weight as you slide the line card into the chassis.

To hold a line card vertically:

1. Orient the line card so that the faceplate faces you. To verify the orientation, confirm that the text on the line card is right-side up.

2. Place one hand around the line card faceplate about a quarter of the way down from the top edge. Do not press hard on it.
3. Place the other hand at the bottom edge of the line card.

If the line card is horizontal before you grasp it, place your left hand around the faceplate and your right hand along the bottom edge.

To hold a line card horizontally:

1. Orient the line card so that the faceplate faces you.
2. Grasp the top edge with your left hand and the bottom edge with your right hand.

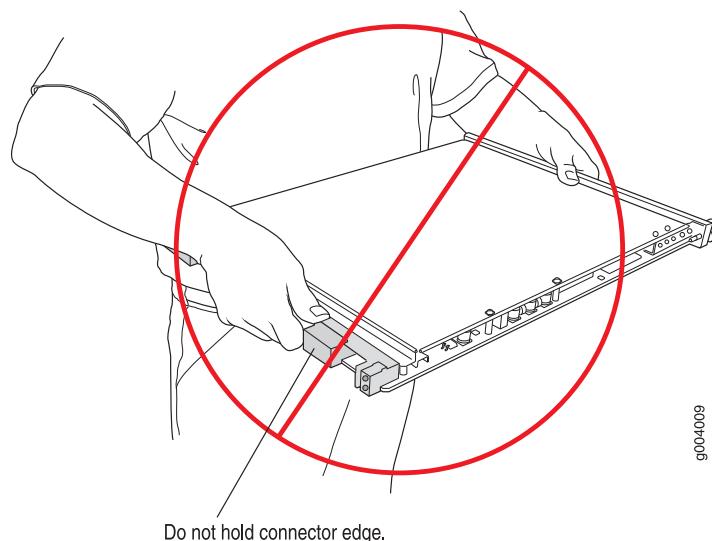
You can rest the faceplate of the line card against your body as you carry it.



CAUTION: Take care not to hit the line card against any object as you carry it. Line card components are fragile.

Never hold or grasp the line card anywhere except the places mentioned in these procedures. In particular, never grasp the connector edge (see Figure 2).

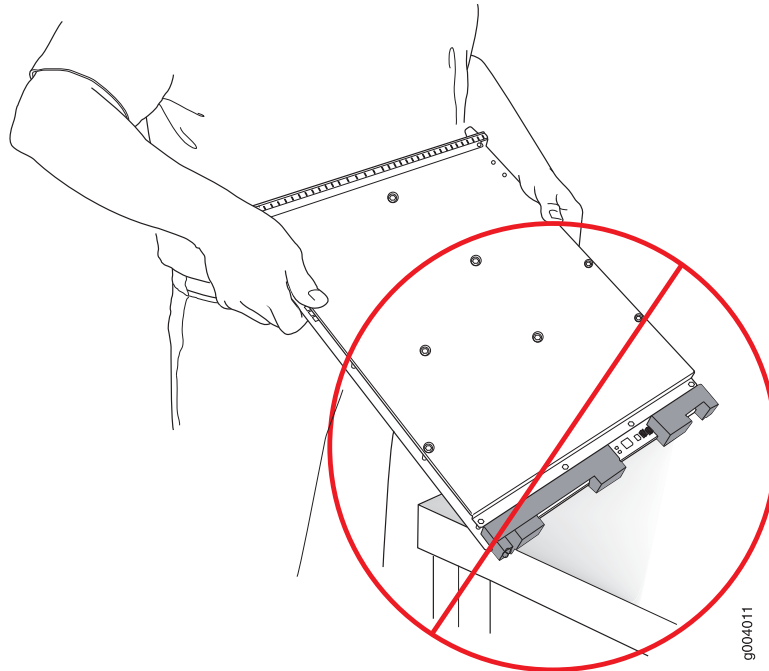
Figure 2: Do Not Grasp the Connector Edge



Never carry the line card while holding the faceplate with only one hand.

Do not rest any edge of a line card directly against a hard surface (see Figure 3).

Figure 3: Do Not Rest the Edge of a Line Card on a Hard Surface



Do not rest connectors on any surface.

If you must rest a line card temporarily on an edge, place a cushion between the edge and the surface.

Do not stack line cards on top of one another or on top of any other component. Place each line card separately in an antistatic bag or on an antistatic mat placed on a flat, stable surface.

Storing a Line Card

You must store a line card in the chassis or in a spare shipping container, horizontally and sheet metal side down. Do not stack line cards on top of one another or on top of any other component. Place each line card separately in an antistatic bag or on an antistatic mat placed on a flat, stable surface.



NOTE: Because the line card is heavy, and because antistatic bags are fragile, inserting the line card into the bag is best done with two people, each to do one of the following steps.

To insert a line card into an antistatic bag:

1. Hold the line card in the horizontal position with the faceplate facing you.
2. Slide the opening of the bag over the line card connector edge.

If you must insert the line card into a bag by yourself:

1. Lay the line card horizontally on a flat, stable surface, sheet metal side down.
2. Orient the line card with the faceplate facing you.
3. Carefully insert the line card connector edge into the opening of the bag and pull the bag toward you to cover the line card.

- Related Topics**
- Maintaining Line Card Cables in EX 8200 series Switches
 - Installing a Line Card in an EX 8200 series Switch
 - Removing a Line Card from an EX 8200 series Switch
 - General Safety Guidelines and Warnings for EX-series Switches
 - 48-port RJ-45 Line Card in an EX 8200 series Switch
 - 48-port SFP Line Card in an EX 8200 series Switch
 - 8-port SFP+ Line Card in an EX 8200 series Switch