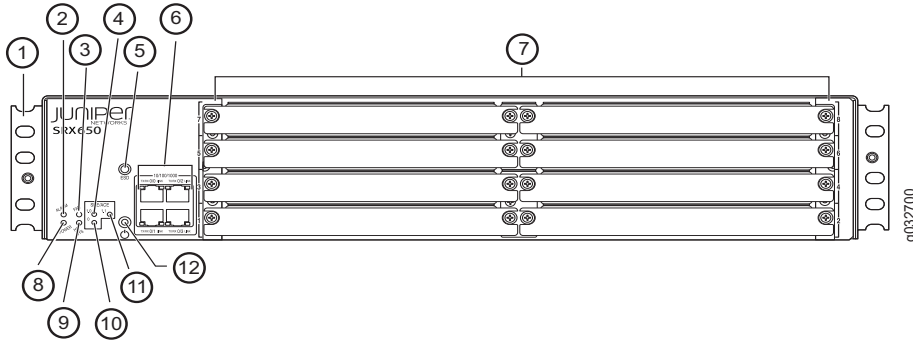


SRX650 Services Gateway Quick Start

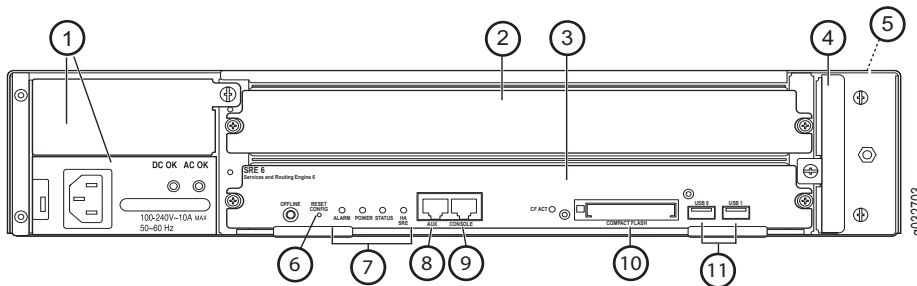
Use the instructions in this quick start to help you connect the SRX650 Services Gateway to your network. For details, see the *SRX650 Services Gateway Hardware Guide* at <http://www.juniper.net/techpubs/hardware/junos-srx/srx650/index.html>.

SRX650 Services Gateway Front Panel



Callout	Description	Callout	Description
1	Mounting brackets	7	GPIM/XPIM slots
2	ALARM LED	8	POWER LED
3	FAN LED	9	HA SYS LED
4	SRE/ACE LED 1.0	10	SRE/ACE LED 0 (applies to Services and Routing Engine models only)
5	ESD outlet	11	SRE/ACE LED 1.1
6	10/100/1000 Ethernet ports	12	Power button

SRX650 Services Gateway Back Panel



Callout	Description	Callout	Description
1	Power supply slots	7	SRE LEDs
2	Multi-use processing slot	8	AUX port
3	SRE slot 0 (shown with Services and Routing Engine model installed)	9	Console port
4	Fan tray	10	External CompactFlash slot
5	Air filter (behind fan tray)	11	2 USB ports
6	Reset Config button		

Connecting and Configuring the SRX Series Device

Use the instructions below to connect and set up the SRX650 Services Gateway to protect your network. Refer to the LEDs on the front and back panels of the device to help you determine the status of the device.

Task 1: Overview

The SRX650 Services Gateway is a security device that requires these basic configuration settings to function:

- Interfaces must be assigned IP addresses.
- Interfaces must be bound to zones.
- All interfaces must be configured as Layer 3 interfaces.
- Policies must be configured between zones to permit or deny traffic.
- Source NAT rules must be set.

The device has the following default configuration set when you power it on for the first time. To be able to use the device, you do not need to perform any initial configuration.

Factory-Default Settings:

Interface	Security Zone	DHCP State	IP Address
ge-0/0/0	Untrust	Client	Dynamically assigned
ge-0/0/1	Trust	Server	192.168.1.1/24
ge-0/0/2	Trust	Server	192.168.2.1/24
ge-0/0/3	Trust	Server	192.168.3.1/24

Factory-Default Settings for Security Policies:

Source Zone	Destination Zone	Policy Action
Trust	Untrust	Permit



Factory-Default Settings for NAT Rule:

Source Zone	Destination Zone	Policy Action
Trust	Untrust	Source NAT to untrust zone interface

Task 2: Connect the Power Cable and a Power Source

Connect the power cable to the device and a power source. We recommend using a surge protector. Note the following indications:

- POWER LEDs (solid green) on front and back panels: The device is receiving power.
- STATUS LED (solid green) on back panel: The device is operating normally.
- ALARM LED (amber) on front panel: The device is operating normally, and may glow amber as a rescue configuration has not been set. This is not a panic condition.

NOTE: After a rescue configuration has been set, an amber ALARM LED indicates a minor alarm, and a solid red ALARM LED indicates that a major problem exists on the services gateway.

IMPORTANT: You must allow the device between 5 and 7 minutes to boot up after you have powered it on. Wait until the STATUS LED is solid green before proceeding to Task 3.

Task 3: Connect the Management Device

Connect the management device to the services gateway using either of the following methods:

- Connect an RJ-45 (Ethernet cable) from the ge-0/0/1 port on the front panel to the Ethernet port on the management device (workstation or laptop). We recommend this connection method. If you are using this method to connect, proceed with Task 4.
- Connect an RJ-45 (Ethernet cable) from the port labeled CONSOLE to the DB-9 adapter, which then connects to the serial port on the management device. (Serial port settings: **9600 8-N-1-N**)

If you are using this method to connect, proceed with the CLI configuration instructions available in the *Branch SRX Series Services Gateways Golden Configurations* at www.juniper.net/us/en/local/pdf/app-notes/3500153-en.pdf.

Task 4: Ensure That the Management Device Acquires an IP Address

After you connect the management device to the services gateway, the DHCP server process on the services gateway will assign an IP address automatically to the management device. Ensure that the management device acquires an IP address on the 192.168.1/24 subnetwork (other than **192.168.1.1**) from the device.

NOTE: The services gateway functions as a DHCP server and will assign an IP address to the management device.

NOTE: If an IP address is not assigned to the management device, manually configure an IP address in the 192.168.1.0/24 subnetwork while the management device is still connected to the ge-0/0/1 port. Do not assign the 192.168.1.1 IP address to the management device, as this IP address is assigned to the device.

NOTE: When an SRX650 Services Gateway is powered on for the first time, it boots using the factory-default configuration.

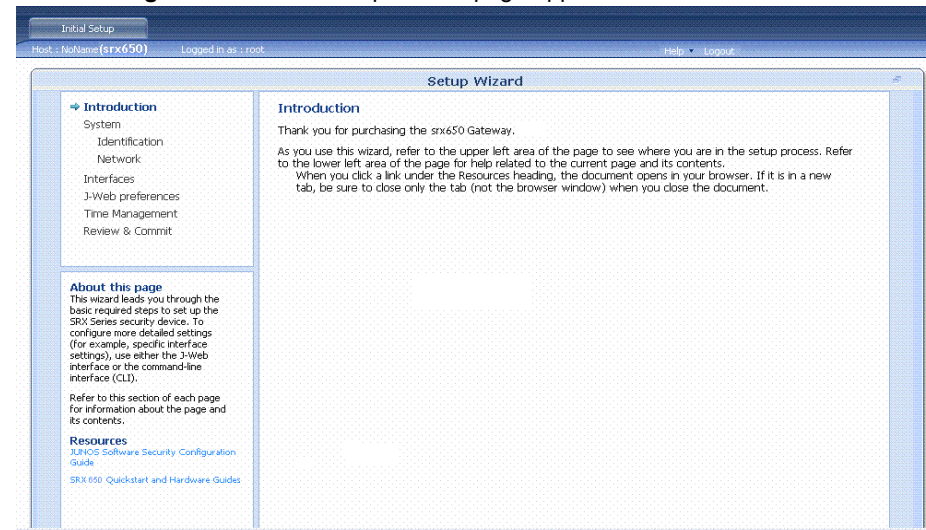
Task 5: Ensure That an IP Address Is Assigned to the Services Gateway

Use one of the following methods to obtain an IP address on the services gateway:

- **Method 1: Obtaining a Dynamic IP Address on Your Services Gateway**
Use the port labeled 0/0 (interface ge-0/0/0) to connect to your Internet Service Provider (ISP). Your ISP will assign an IP address using the DHCP process. If you use this method, when you get to Task 8, skip steps 1 through 4.
- **Method 2: Obtaining a Static IP Address on Your Services Gateway**
Use the port labeled 0/0 (interface ge-0/0/0) to connect to your Internet Service Provider (ISP). Your ISP will have provided a static IP address. You will not receive an IP address using the DHCP process. If you used this method, you must configure the static IP address on the services gateway as described in Task 8, steps 1 through 4.

Task 6: Access the J-Web Interface

1. Launch a Web browser from the management device.
2. Type **http://192.168.1.1** in the URL address field.
3. Specify the default username as **root**. Do not enter any value in the Password field.
4. Click **Log In**. The J-Web Setup Wizard page appears:



Task 7: Configure the Basic Settings

1. Click **Start** at the bottom of the introduction page. You can configure the basic settings, such as hostname, domain name, and root password, for your services gateway.

NOTE: All network and management access settings are optional.

NOTE: All fields marked with an asterisk (*) are required.

Sample Settings on the SRX650 Services Gateway:

SRX650 Services Gateway Property	Sample Value
Services gateway hostname	devicea
IP address for default gateway	10.0.0.1/24
IP address of the NTP server used to synchronize system time	10.148.2.21
IP address of the DNS server to which DNS requests are sent	10.148.2.32
Domains to which the services gateway belongs	lab.device.net and device.net

- From the Configure System: Identification page, type the hostname of the services gateway; for example, **devicea**.
- From the Configure System: Identification page, type the domain name of the services gateway; for example, **lab.device.net**.
- From the Configure System: Identification page, type the root password; for example, **ssh-rsaAAAAB3Nza...D9Y2gXF9ac==root@devicea.lab.device.net**.

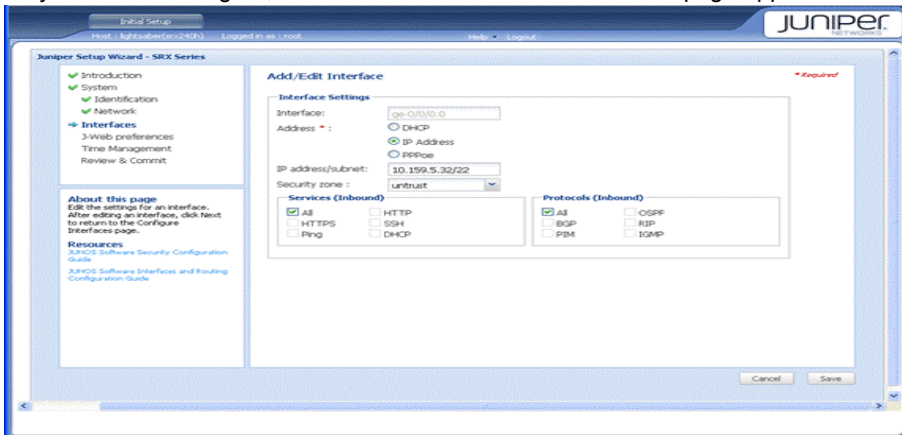
Task 8: Configure Interface and J-Web Options

If you have used Method 2 in Task 5 to obtain an IP address on your services gateway, ensure that you make the following J-Web modifications:

- From the Configure System: Network Settings page of the wizard, type the IP address (for example, **10.0.0.1/24**) of the default gateway in the Default Gateway field and serve names in the DNS Servers list. Your ISP provides the IP address for the gateway and the server names.

NOTE: You can optionally configure DNS servers and searches, interface groups (VLANs), current system time and time zone, and NTP servers.

- From the Configure Interfaces page of the wizard, click the interface (**ge-0/0/0.0**) you want to configure, and click **Edit**. The Add/Edit Interface page appears.



- Next to Address, unselect **DHCP** and select **IP Address**.
- In the IP Address/subnet field, enter the manual IP address provided by your ISP. The IP address must be entered in *a.b.c.d/xx* format, where *xx* is the subnet prefix. Click **Add**.

NOTE: Make sure that you have selected the required services and protocols under **Services (Inbound)** and **Protocols (Inbound)**. Select **all** to permit all protocols and services.

- From the J-Web Preferences page, from the J-Web starting page options, select the tab you want to appear on startup.

Task 9: Apply the Basic Configuration

To apply the configuration settings for the services gateway:

- From the Configure J-Web Preferences Page, from the J-Web commit options, specify when you want commit to occur.
IMPORTANT: Ensure that you have configured the IP address, root authentication, and default gateway before you commit the configuration.
- Review the configuration on the Review & Commit page. Click **Commit** to save the configuration, or click **Back** to make changes.

After configuring the basic settings, the J-Web Setup wizard redirects you to J-Web pages where you can continue working in the J-Web interface.

IMPORTANT: After you complete initial setup configuration, the J-Web Setup wizard is no longer available unless you reset the services gateway to the factory default settings and reboot it. You can perform additional setup by using the J-Web interface or the CLI interface. You can use wizards to configure basic firewall policies, VPN settings, and NAT rules.

NOTE: To make any changes to the interface configuration, see the *Branch SRX Series Services Gateways Golden Configurations* at <http://www.juniper.net/us/en/local/pdf/app-notes/3500153-en.pdf>.

Task 10: Verify the Configuration

Access <http://www.juniper.net> to ensure that you are connected to the Internet. This connectivity ensures that you can pass traffic through the services gateway.

NOTE: If the <http://www.juniper.net> page does not load, verify your configuration settings, and ensure that you have applied the configuration.

After you have completed these steps, you can pass traffic from any trust port to the untrust port.

Powering Off the Device

To shut down the operating system on the Services and Routing Engine, perform a graceful shutdown by pressing and releasing the Power button. The device begins gracefully shutting down the operating system on the Services and Routing Engine.

To rescue the configuration or return the services gateway to its factory default configuration, press the Reset Config button.

NOTE: You can reboot or halt the system in the J-Web interface by selecting **Maintain > Reboot**.

For additional configuration information, see the *Branch SRX Series Services Gateways Golden Configurations* at <http://www.juniper.net/us/en/local/pdf/app-notes/3500153-en.pdf>.

For detailed software configuration information, see the software documentation available at <http://www.juniper.net/techpubs/software/junos-srx/index.html>.

Contacting Juniper Networks

For technical support, see <http://www.juniper.net/support/requesting-support.html>.