

EX3200 and EX4200 Switch Quick Start

To install and configure a Juniper Networks EX3200 or EX4200 Ethernet Switch, you need:

- Two mounting brackets and eight mounting screws (provided)
- If your system order includes an AC power supply—a power cord with a plug appropriate for your geographical location and a power cord retainer (provided)
- If your system order includes a DC power supply—DC power source cables (12–14 AWG) with ring lug (Molex 190700067 or equivalent) (not provided)
- Ethernet cable with an RJ-45 connector attached (provided)
- Management host, such as a PC, with an Ethernet port (not provided)
- Screws to secure the chassis to the rack or cabinet (not provided)
- Phillips (+) screwdriver, number 2 (not provided)

For more information about the tasks described in this quick start and other setup tasks, see the EX Series documentation at <http://www.juniper.net/techpubs/>.

Part 1: Install a Power Supply in the Switch (If It Is Not Installed)

1. Remove the power supply from the bag. Take care not to touch power supply components, pins, leads, or solder connections.
2. Push down on the locking lever on the left front of the power supply until it is in its lowest position (see the figure in Part 3 for the location of the locking lever). You might need to loosen the locking lever screw to move the lever.
3. Using both hands, place the power supply in the power supply slot on the rear panel of the switch and slide it in until it is fully seated.
4. Push the locking lever up to its highest position (this action might pull the power supply in). Tighten the locking lever screw.

Part 2: Mount the Switch

You can mount an EX3200 or EX4200 switch on two posts of a 19-in. rack or cabinet by using the mounting brackets provided with the switch.

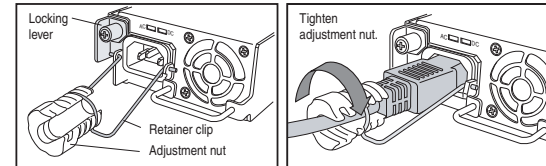
1. Ensure that the rack is properly secured to the building in its permanent location.
NOTE: If you are mounting multiple units on a rack, mount the heaviest unit at the bottom and mount the others from bottom to top in decreasing order of the weight of the units.
2. Align the mounting brackets along the front or rear of the side panels of the chassis depending on whether you are front-mounting or rear-mounting the switch and attach the mounting brackets to the chassis by using the mounting screws. Tighten the screws.
NOTE: The switch weighs 18 lb (8.2 kg). Installing the switch requires one person to lift the switch and a second person to secure it to the rack.
3. Have one person grasp both sides of the switch, lift the switch, and position it in the rack, aligning the mounting bracket holes with the threaded holes in the rack rail. Align the bottom hole in each mounting bracket with a hole in each rack rail, making sure the chassis is level.
4. Have a second person secure the switch to the rack or cabinet by using appropriate screws.

Part 3: Connect Power to the Switch

NOTE: If you are interconnecting multiple switches as a Virtual Chassis, power on only one switch—the one you will use as the master.

To connect AC power to the switch:

1. Squeeze the two sides of the power cord retainer clip and insert the L-shaped ends of the wire clip into the holes in the bracket on each side of the AC appliance inlet.
2. Insert the coupler end of the power cord into the AC appliance inlet.
3. Push the power cord into the slot in the adjustment nut of the power cord retainer clip. Turn the nut until it is snug against the base of the coupler and the slot in the nut is turned 90° from the top of the switch.



4. If the AC power source outlet has a power switch, set it to the OFF (O) position.
5. Insert the power cord plug into the power source outlet.
6. If the AC power source outlet has a power switch, set it to the ON (I) position.
7. Repeat these steps for each AC power supply.

To connect DC power to the switch:

Each DC power supply has four terminals labeled A+, B+, A–, and B–. The power supply is shipped with jumpers from A+ input to B+ input tied together and jumpers from A– input to B– input tied together.

WARNING: Ensure that the input circuit breaker is open so that the voltage across the DC power source cable leads is 0 V and that the cable leads will not become active while you are connecting DC power.

1. Remove the screw that secures the terminal block cover and remove the cover.
2. Connect the power supply to the power sources. Secure power source cables to the power supply by screwing the ring lug attached to the cable to the appropriate terminal (use the screw from the terminal).
 - To connect a power supply to a power source: Leave the jumpers in place and secure the positive power source cable to the A+ terminal and the negative power source cable to the A– terminal.
 - To connect one power supply to two power sources: Remove the jumpers and secure the positive power source cable of the first power source to the A+ terminal and the negative power source cable to the A– terminal. Then secure the positive power source cable of the second power source to the B+ terminal and the negative power source cable to the B– terminal.
3. Replace the terminal block cover and secure it using the screw.
4. Close the input circuit breaker. Verify that the LEDs on the power supply are lit green and are on steadily.
5. Repeat these steps for each DC power supply.



Part 4: Perform Initial Configuration

NOTE: Before you begin the configuration, enable a DHCP client on the management PC you connect to the switch so that the switch can obtain an IP address dynamically.

NOTE: Read the following steps before you begin the configuration. Complete the initial configuration using EZSetup within 10 minutes. The LCD panel displays a count-down timer when the switch is in initial setup mode. The switch exits EZSetup after 10 minutes and reverts to the factory configuration, and the PC loses connectivity to the switch.

- Transition the switch into EZsetup mode using the **Menu** and **Enter** buttons located to the right of the LCD panel:
 - Press **Menu** until you see MAINTENANCE MENU. Then press **Enter**.
 - Press **Menu** until you see ENTER EZSetup. Then press **Enter**.If EZSetup does not appear as an option in the menu, select Factory Default to return the switch to the factory default configuration. EZSetup is displayed in the menu only when the switch is set to the factory default configuration.
 - Press **Enter** to confirm setup and continue with EZSetup.
- Connect the Ethernet cable from the Ethernet port on the PC to port 0 (ge-0/0/0) on the front panel of the switch.


The ge-0/0/0 interface is now configured as a DHCP server with the default IP address, 192.168.1.1. The switch can assign an IP address to the management PC in the IP address range 192.168.1.2 through 192.168.1.253.
- From the PC, open a Web browser, type <http://192.168.1.1> in the address field, and press the Enter key.
- On the J-Web login page, enter **root** as the username, leave the password field blank, and click **Login**.
- On the Introduction page, click **Next**.
- On the Basic Settings page, enter the hostname, enter and reenter a password, specify the time zone, and synchronize the switch date and time settings with the management PC or set them manually. Then, click **Next**.
- Use the Management Options page to select the management scenario:
 - In-band Management—Use VLAN ‘default’ for management**
Select this option to configure all data interfaces as members of the default VLAN. Click **Next**. Specify the management IP address and the default gateway.
 - In-band Management—Create new VLAN for management**
Select this option to create a management VLAN. Click **Next**. Specify the VLAN name, VLAN ID, member interfaces, and management IP address and default gateway for the new VLAN.
 - Out-of-band Management—Configure management port**
Select this option to configure only the management interface. Click **Next**. Specify the IP address and default gateway for the management interface.
- Click **Next**.
- On the Manage Access page, you may select options to enable Telnet, SSH, and SNMP. For SNMP, you can configure the read community, location, and contact.
- Click **Next**. The Summary page displays the settings you have selected.

11. Click **Finish**. The configuration is committed as the active switch configuration. You can now log in with the CLI or the J-Web interface to continue configuring it.

NOTE: After the configuration is committed, the connectivity between the PC and the switch might be lost. To reconnect, release and renew the IP address by executing the appropriate commands on the PC or by removing and reinserting the Ethernet cable.

Safety Warnings Summary

This is a summary of safety warnings. For a complete list of warnings, including translations, see the EX Series documentation at <http://www.juniper.net/techpubs/>.

 **WARNING:** Failure to observe these safety warnings can result in personal injury or death.

- Permit only trained and qualified personnel to install or replace switch components.
- Perform only the procedures described in this quick start and the EX Series documentation. Other services must be performed only by authorized service personnel.
- Before installing the switch, read the planning instructions in the EX Series documentation to make sure that the site meets power, environmental, and clearance requirements for the switch.
- Before connecting the switch to a power source, read the installation instructions in the EX Series documentation.
- Installing an EX3200 or EX4200 switch requires one person to lift the switch and a second person to install mounting screws. To prevent injury, keep your back straight and lift with your legs, not your back.
- If the rack has stabilizing devices, install them in the rack before mounting or servicing the switch in the rack.
- Before installing or after removing an electrical component, always place it component-side up on an antistatic mat placed on a flat, stable surface or in an antistatic bag.
- Do not work on the switch or connect or disconnect cables during electrical storms.
- Before working on equipment that is connected to power lines, remove jewelry, including rings, necklaces, and watches. Metal objects heat up when connected to power and ground and can cause serious burns or become welded to the terminals.

Power Cable Warning (Japanese)

The attached power cable is only for this product. Do not use this cable for another product.

注意

附属の電源コードセットはこの製品専用です。
他の電気機器には使用しないでください。

90000906

Contacting Juniper Networks

For technical support, see <http://www.juniper.net/support/requesting-support.html>.