

Comparing the CLI To the NSM UI

Because NSM is a UI and the CLI is a command-line interface, the way you access configuration, monitoring, and management information is different in each interface. The CLI has two modes: operational mode and configuration mode.

- Operational mode—This mode displays the current router status. In operational mode, you enter commands to monitor and troubleshoot the software, network connectivity, and router.
- Configuration mode—A router configuration is stored as a hierarchy of statements. In configuration mode, you enter these statements to define all properties of the JUNOS software, including interfaces, general routing information, routing protocols, user access, and several system hardware properties.

The following sample output shows the operational mode commands available at the top level of the CLI operational mode:

```
user@host> ?
Possible completions:
clear          Clear information in the system
configure     Manipulate software configuration information
file          Perform file operations
help          Provide help information
monitor       Show real-time debugging information
mtrace        Trace multicast path from source to receiver
op            Invoke an operation script
ping          Ping remote target
quit          Exit the management session
request       Make system-level requests
restart       Restart software process
set           Set CLI properties, date/time, craft interface message
show          Show system information
ssh           Start secure shell on another host
start         Start shell
telnet        Telnet to another host
test          Perform diagnostic debugging
traceroute    Trace route to remote host
```

The following sample output shows the protocols configuration of an M-series device:

```
[edit]
user@host# show protocols
mp1s {
  interface ge-1/3/3.0;
  interface fe-0/1/2.0;
  interface fe-0/1/1.0;
}
ospf {
  traffic-engineering;
  area 0.0.0.1 {
    interface lo0.0 {
      passive;
    }
    interface ge-1/3/3.0;
    interface fe-0/1/2.0;
```

```

    }
    interface fe-0/1/1.0;
  }
}

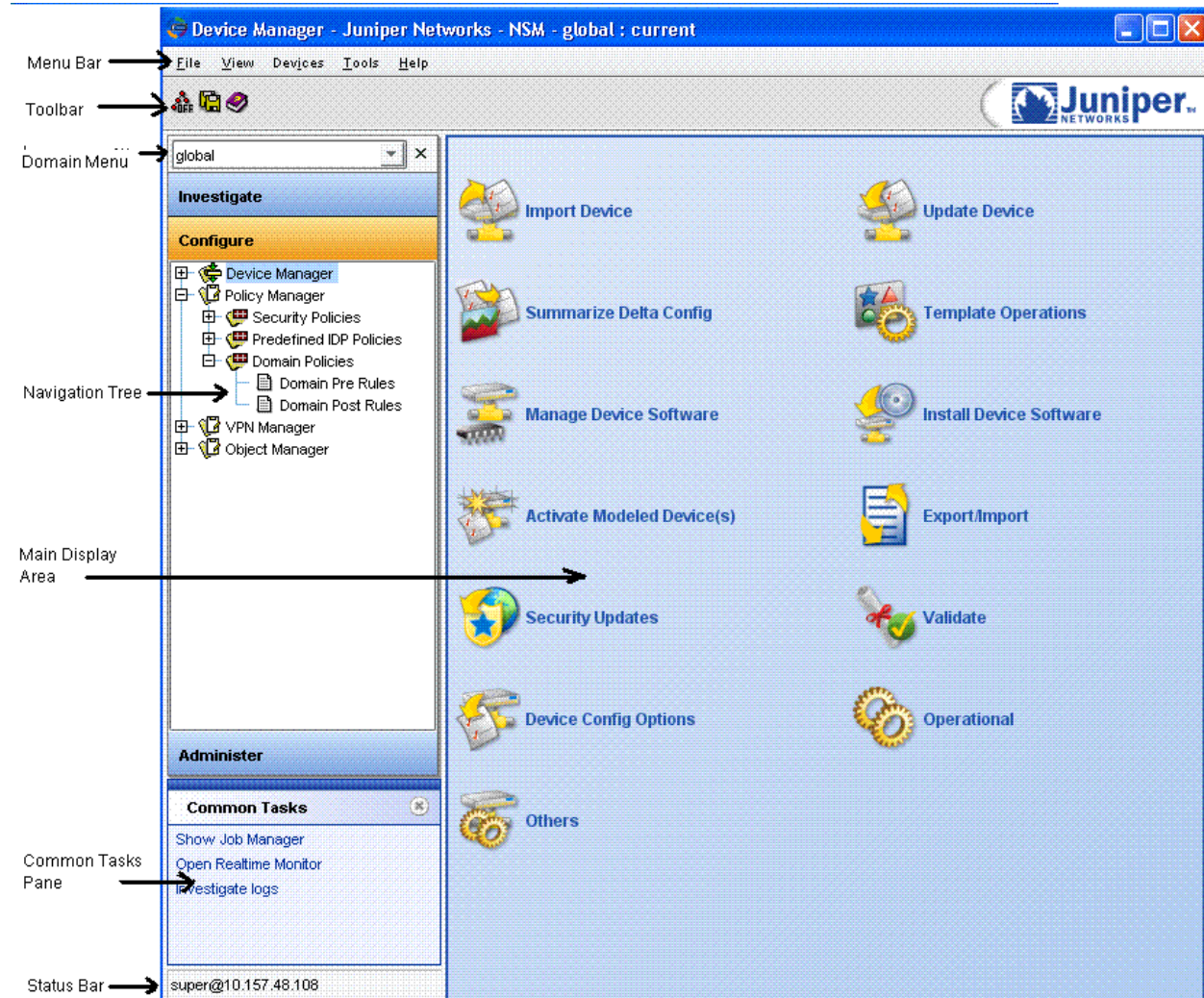
```

For more information about operational and configuration mode, see the *JUNOS CLI User Guide*.

In contrast, the NSM UI displays a set of menus, toolbar icons at the top of the UI window, and a navigation tree that includes an Investigate panel, a Configure panel, and an Administer panel. For some components, right-click menus are available to perform tasks.

Figure 1 shows the NSM UI with the Configure navigation tree expanded and the main display area containing the services available from the Configure panel. Different services display when you select the Investigate or Administer panels.

Figure 1: Overview of the User Interface



- Menu bar—Contains clickable commands. You can access many menu bar commands using keyboard shortcuts. For a complete list of keyboards shortcuts, see the *Network and Security Manager Online Help*.
- Toolbar—Contains buttons for common tasks. The buttons displayed in the toolbar are determined by the selected module.
- Domain menu—Contains a pull-down menu above the navigation tree where domains and subdomains are selected. The domains and subdomains displayed are those to which the current user has access.
- Navigation Tree—The navigation tree displays the 11 NSM modules in the left pane of the NSM window.
- Investigate panel—Provides NSM modules with tree structures for monitoring your network.
- Configure panel—Provides NSM modules with tree structures for configuring devices, policies, virtual private networks (VPNs), and other objects.
- Administer panel—Provides NSM modules with tree structures for managing the NSM servers, ongoing jobs, and other actions.
- Main display area—Displays the content for the currently selected module or module contents.
- Common tasks pane—Provides links to commonly accessed tasks throughout the UI. These common tasks change depending on what tasks are often selected in the UI.
- Status bar—Displays additional information for a selected module.

For details about the Investigate, Configure, and Administer panels, see “NSM Modules” in the *Network Security Manager Administration Guide*.

Related Topics

- NSM and Device Management Overview
- Understanding the CLI and NSM
- NSM Services Supported for M-series and MX-series Devices
- How NSM Works with the CLI and Distributed Data Collection
- Device Schemas
- Communication Between a Device and NSM

Published: 2009-08-23