

Alcatel Migration Assessment Service

Service Overview

Legacy architectures are often a barrier to increasing service velocity. This is often due to the complexities and costs associated with trying to implement a next-generation network framework on infrastructure that is under powered and under featured for the job. These engineering complexities can bring with them high risks, and the technical constraints that some legacy hardware platforms introduce make the entire proposition seem that much more challenging when compared to the prospect of creating a more service-friendly ecosystem.

Service providers who have a legacy installed base of Alcatel 7x50 routers as provider edge, aggregation, and access devices, are finding themselves faced with these challenges.

Service Description

The network edge is mainly about monetization and constant innovation in order to deliver more revenue-generating services to end customers and subscribers. There is a heavy dependency on the timely availability of new hardware and software features.

Juniper Networks Alcatel Migration Assessment Service is designed to help you understand the options available when seeking to move to a flexible, open platform that will enhance your ability to innovate and monetize. This service also provides you with an understanding of how Juniper can mitigate the risks involved in migrating to our products and solutions in a predictable and seamless manner. Based on their many years of experience with similar projects, Juniper Networks Professional Services consultants excel in mission-critical network migrations.

The engagement primarily focuses on understanding your Present Mode of Operation (PMO) in respect to the architecture deployed, operational challenges, current and expected service velocity and scale, and the business drivers moving forward.

The network edge is never a standalone entity, and integration with billing, provisioning, and monitoring systems are some of the areas that add complexity. Adoption of a given technology is accepted based on how seamlessly the migration from the legacy solution/product to a newer solution can be achieved, which creates more cost benefits and ignites the edge.

Features and Benefits

Based on the available PMO information, Professional Services consultants create a blueprint of the potential architectures that would best fit your environment. The architecture objectives are to:

- Ensure that the network edge is transformed to deliver more flexibility in creating an ecosystem that will enable you to offer innovative ways of delivering services to end customers
- Reduce operational costs involved in managing a legacy infrastructure/technology by replacing the legacy with newer and service-friendly architectures
- Provide you with insight about network evolution, which will enable you to plan ahead and create a roadmap for the foreseeable future

Once the proposed solution is understood, the consultant proposes migration guidelines for areas that include:

- Migration preparation: For example, what are the various preparatory phases and steps that lead to a migration? What level of preparation needs to go into the planning phase?
- Migration execution phases: Defining multiple phases with each phase having a clear set of objectives and results prior to moving to the next phase in the process. For example, the consultant may recommend a "Testing Phase" in a controlled environment for creating configuration snippets per device/service, or recommend a pilot migration that creates test customers per service in order to check the success/time/integration with Operation, Administration, and Maintenance (OAM) systems.
- Tools and processes: The consultant will make recommendations for tools and processes to be used during migrations.
- Automation: The consultant will identify areas where the use of automation can help in creating checks and balances.
- Rollback: Rollback procedures will be defined and documented.
- Escalations: An escalation process will be created such as the one outlined below.

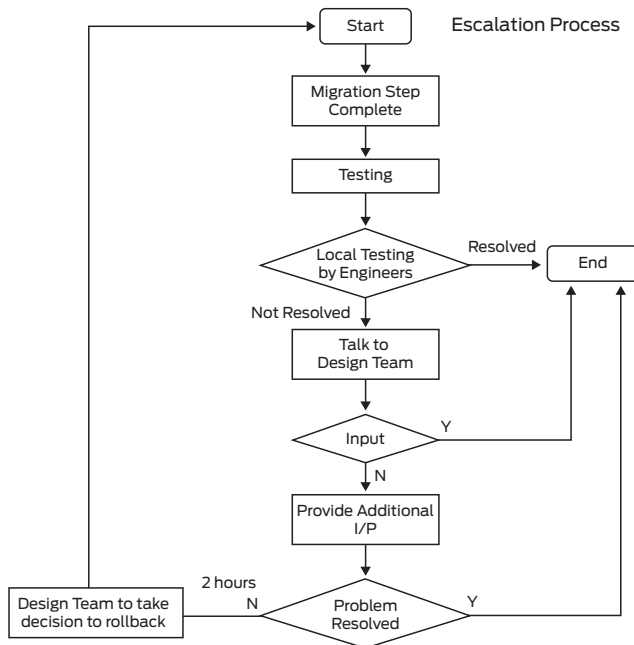


Figure 1. Escalation process flow

By the end of the engagement, you will have received recommendations on architectures for the edge, and a clear plan highlighting the process for a seamless transition. As a result of

this service, you will understand architecture options and how to plan and effectively execute the migration while minimizing risk to the network.

Juniper Networks Services and Support

Juniper Networks is the leader in performance-enabling services that are designed to accelerate, extend, and optimize your high-performance network. Our services allow you to maximize operational efficiency while reducing costs and minimizing risk, achieving a faster time to value for your network. Juniper Networks ensures operational excellence by optimizing the network to maintain required levels of performance, reliability, and availability. For more details, please visit www.juniper.net/us/en/products-services.

Juniper Networks Professional Services

As leaders in networks and security, Juniper Networks Professional Services consultants and engineers are uniquely qualified to assist service providers in designing, implementing, and optimizing network solutions. Our team appreciates the complexities and the subtleties inherent in large-scale internetwork design and can assist, or provide customized and integrated "turn-key" solutions.

Our process is to apply appropriate efforts and resources to analyze the network from an end-to-end perspective. This allows the Juniper consultants to review the existing network and give advice about solutions or specific fixes to deploy. Once the assessment is complete, our Professional Services team can deliver and implement recommended solutions.

Juniper Networks Professional Services helps accelerate your network's time to value, bringing revenue-generating capabilities online faster for bigger productivity gains, faster rollouts of new business models and ventures, greater market reach, and higher levels of customer satisfaction. Your onsite staff will work closely with Juniper specialists, building operational capabilities and reducing your exposure to IT risks. As a result of our previous experience involving hundreds of networks around the world, Professional Services is uniquely qualified to help customers design, implement, and optimize their networks for confident operation and rapid returns on infrastructure investments. These professionals understand today's Internet demands and those that are just around the corner—for bandwidth efficiency, best-in-class security, solid reliability, and cost-effective scaling.

The use of Juniper's consultants also avoids the requirement for you to have the necessary technical and evaluation skills in-house. The evaluation can be completed faster, and you are not forced to wait until internal resources become available, nor do you have to address the issue of conflicting project priorities.

Ordering Information

The Juniper Networks Alcatel Migration Assessment Service may be ordered using the part number shown in the table below. Before the service begins, a statement of work (SOW) will be established outlining the scope of effort to be performed.

Model Number	Name
PRO-ALC-MIG-ASSESS	Alcatel Migration Assessment Service

About Juniper Networks

Juniper Networks is in the business of network innovation. From devices to data centers, from consumers to cloud providers, Juniper Networks delivers the software, silicon and systems that transform the experience and economics of networking. The company serves customers and partners worldwide. Additional information can be found at www.juniper.net.

Corporate and Sales Headquarters

Juniper Networks, Inc.
1133 Innovation Way
Sunnyvale, CA 94089 USA
Phone: 888.JUNIPER (888.586.4737)
or +1.408.745.2000
Fax: +1.408.745.2100
www.juniper.net

APAC and EMEA Headquarters

Juniper Networks International B.V.
Boeing Avenue 240
1119 PZ Schiphol-Rijk
Amsterdam, The Netherlands
Phone: +31.0.207.125.700
Fax: +31.0.207.125.701

Copyright 2015 Juniper Networks, Inc. All rights reserved. Juniper Networks, the Juniper Networks logo, Junos and QFabric are registered trademarks of Juniper Networks, Inc. in the United States and other countries. All other trademarks, service marks, registered marks, or registered service marks are the property of their respective owners. Juniper Networks assumes no responsibility for any inaccuracies in this document. Juniper Networks reserves the right to change, modify, transfer, or otherwise revise this publication without notice.