

Junos Space Content Director

Product Overview

Junos Space Content Director simplifies the configuration and deployment of Juniper Networks Junos Content Encore, enabling rapid service creation and provisioning by service providers. Junos Space Content Director runs on the Juniper Networks Junos Space platform, which provides scalability and high availability for uninterrupted service management and supports APIs for building custom applications such as a self provisioning portal.

Product Description

Network operators, enterprises, and content publishers are all challenged to deliver Web content to subscribers in a manner that is efficient, cost-effective, and scalable. Juniper Networks® Junos® Content portfolio is a suite of next-generation content caching and delivery products that address these challenges. Junos Content can significantly improve the efficiency and scale of content delivery, reducing costs and helping introduce new revenue generating services.

Juniper Networks Junos® Space Content Director accelerates deployment of Junos Content Encore by providing a simple Web browser-based graphical user interface for device configuration, rapid service creation, and service provisioning. Junos Space Content Director runs on the Junos Space platform, which provides a consistent management environment across the Juniper portfolio. With easy to use templates and the ability to centrally manage a large-scale deployment, Junos Space Content Director dramatically speeds the activation of new devices, content delivery services, and customers.

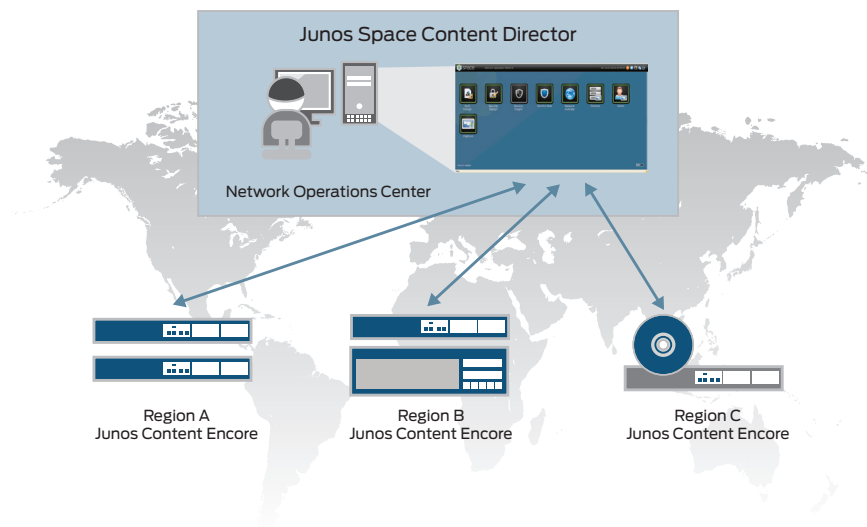


Figure 1: Junos Space Content Director enables easy, centralized configuration and service management.

Ease of Management

Junos Space Content Director uses a state-of-the-art Web GUI that simplifies the way network operators interact with the system. It has a task-oriented user interface that is designed to align with the needs of individual users, and workflows devised in a way that caters to the roles and privileges of different operators. Junos Space Content Director supports role-based access control (RBAC). With no client software needed, all you need is a Web browser and secure Internet connection to manage Junos Content devices from anywhere, at any time.

Scalable and Resilient Runtime Environment

Junos Space Content Director is part of Junos Space, a comprehensive network management solution that simplifies management of Juniper's switching, routing, and security devices. With Junos Space, you can simplify and automate the network, improve network agility, and deliver new services quickly ... all from a single console. Junos Space is composed of the following three software elements:

- **Junos Space Network Management Platform** – Provides comprehensive FCAPS and element management of Juniper devices which improves operator efficiencies, providing a programmable interface and exposible API's that enable the development and integration of 3rd party applications.
- **Junos Space Management Applications** – Plug-n-play, domain-specific applications to help you provision new services and optimize workflow tasks across thousands of Juniper devices
- **Junos Space SDK (software development kit)** – A programmable network solution that enables you to leverage the connections and intelligence imbedded in the network to create customized management solutions for your specific needs

Junos Space Content Director is one of the plug-n-play applications running on the Junos Space Network Management Platform. While the Junos Space Network Management Platform offers broad fault, configuration, and device provisioning capabilities with a task-specific user interface, the multiple Junos Space Management Applications extend the breadth of the platform to optimize network management for various domains. These applications enable you to automate the end-to-end provisioning of new services across thousands of devices with a simple point-n-click GUI interface, and to optimize management for specific domains, such as Core, Edge, Access and Aggregation, Data Center, WAN, and Campus and Branch.

Unified Network Operations Platform

Because Junos Space Content Director is part of the Junos Space Management Applications, you benefit from the ability to manage and configure all Juniper devices in the network from a unified operations environment. Junos Space Management Applications work together with a common, intuitive GUI to enable total management of your Juniper resources and assets, including device discovery, device configuration, and service provisioning. This lowers operational costs by streamlining management tasks.

Open Architecture and Simple Integration

Together with the Junos Space Network Management Platform, Junos Space Content Director exposes RESTful Web Service APIs for northbound integration. Customers and third-party developers can access these language agnostic APIs to quickly build custom applications and integrate with their existing operations support systems (OSS).

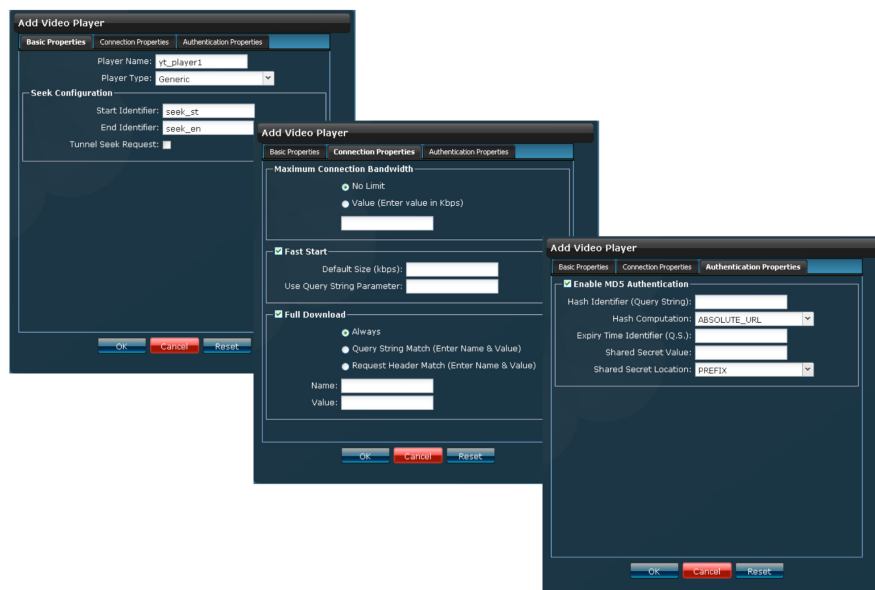


Figure 2: The Service Provisioning workspace enables an operator to quickly provision and refine configurations.

REST (Representational State Transfer) is an industry-standard architecture in which Web browser clients initiate requests to servers, and servers process requests and return appropriate responses. In this architecture, Web services are viewed as resources that are uniquely identified by their URLs. The key characteristic of a RESTful Web service is the explicit use of HTTP methods to denote the invocation of different operations. As a result, the APIs exposed by Content Director are usable across application development platforms (Java, .NET, PHP, etc.).

Architecture and Key Components

Junos Space Content Director workspaces provide purpose-built user interfaces that can be used for rapid service creation and provisioning by network operations center (NOC) operators. These workspaces also expose purpose-built REST APIs that can be used to build customer facing, self provisioning portals. The Junos Space Content Director workspaces are described below.

Device Management

The “Devices” workspace lists all managed Junos Content devices and lets the NOC operator manage device configuration, view device performance dashboards, and perform software upgrades.

Service Design

The “Service Design” workspace enables the expert service designer to design and create various content delivery services including transparent caching, origin acceleration, and edge delivery. Junos Space Content Director comes with a set of service templates for each service type. These service templates incorporate best practices for different deployment scenarios. Service designers can create new service templates by copying and modifying the templates provided by Juniper.

Service Provisioning

This workspace lets the service provisioning operators quickly provision and manage customer service orders using service templates created by the expert service designer.

Device Configuration Templates

This workspace is provided by the Space platform for expert users who are familiar with the details of all device configuration options for various Juniper devices, including Juniper Networks Junos Content Encore. Device configuration templates allow the expert service designer to configure device parameters that are only changed from their default values for exceptional situations or test purposes. Designers can view the complete device configuration parameter hierarchy and select parameters to create advanced configuration templates for specific deployment needs.

Job Management

Junos Space Content Director configuration and service management fall into two broad categories—operations performed on the configuration database maintained by Junos Space Content Director, and operations performed on the managed devices. The former are generally synchronous operations where the results are displayed within a few seconds of the request submission by the user (for example, to view an existing cache tuning policy). Operations that require access to the managed devices (such as changing a cache tuning policy in managed devices) are implemented as asynchronous operations that run as background jobs while the user continues with other work. The Job Management workspace allows the user to view a list of jobs in progress, track progress, and view results.

Features and Benefits

Feature	Description	Benefits
Highly available and scalable	Runs on an extensible fabric of physical or virtual appliances to maximize scalability and availability.	<ul style="list-style-type: none"> Ensures resiliency Enables large-scale deployments High availability
Easy to use web interface	Leverages the intuitive Junos Space GUI.	<ul style="list-style-type: none"> Simplifies management tasks Reduces errors by guiding users through valid choices Reduces training time and expense
Open architecture and simple integration	Use of industry-standard protocol enables quick and easy integration with third-party service management systems.	<ul style="list-style-type: none"> HTTP-based REST APIs enable cross-platform application development (Java, .NET, PHP, etc.) Customers able to leverage existing OSS
Unified network operations platform	Junos Space applications work together to enable management of all Juniper products.	<ul style="list-style-type: none"> Junos Space GUI to enable centralized management of all Juniper devices from one console Reduces costs and complexity associated with disparate management systems
Service management	Purpose-built GUI for rapid service creation and provisioning.	<ul style="list-style-type: none"> Service Design templates that incorporate best practices for deployment Rapid service provisioning using Service Design templates

Specifications

Variable Form Factors

- Juniper Networks JA1500 Junos® Space Appliance (SPC1500-A-BSE)
- Junos Space Virtual Appliance for VMware environment (SPC-VA-BSE)

Junos Space Platform Support

- Requires Junos Space 11.2 or higher

Juniper Networks Services and Support

Juniper Networks is the leader in performance-enabling services that are designed to accelerate, extend, and optimize your high-performance network. Our services allow you to maximize operational efficiency while reducing costs and minimizing risk, achieving a faster time to value for your network. Juniper Networks ensures operational excellence by optimizing the network to maintain required levels of performance, reliability, and availability. For more details, please visit www.juniper.net/us/en/products-services.

About Juniper Networks

Juniper Networks is in the business of network innovation. From devices to data centers, from consumers to cloud providers, Juniper Networks delivers the software, silicon and systems that transform the experience and economics of networking. The company serves customers and partners worldwide. Additional information can be found at www.juniper.net.

Corporate and Sales Headquarters

Juniper Networks, Inc.
1133 Innovation Way
Sunnyvale, CA 94089 USA
Phone: 888.JUNIPER (888.586.4737)
or +1.408.745.2000
Fax: +1.408.745.2100
www.juniper.net

APAC and EMEA Headquarters

Juniper Networks International B.V.
Boeing Avenue 240
1119 PZ Schiphol-Rijk
Amsterdam, The Netherlands
Phone: +31.0.207.125.700
Fax: +31.0.207.125.701

Copyright 2015 Juniper Networks, Inc. All rights reserved. Juniper Networks, the Juniper Networks logo, Junos and QFabric are registered trademarks of Juniper Networks, Inc. in the United States and other countries. All other trademarks, service marks, registered marks, or registered service marks are the property of their respective owners. Juniper Networks assumes no responsibility for any inaccuracies in this document. Juniper Networks reserves the right to change, modify, transfer, or otherwise revise this publication without notice.

